

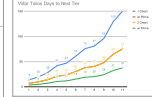
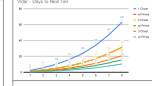
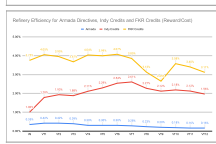
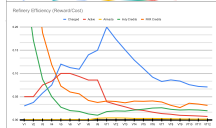
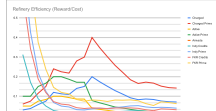
Bang Refinery Output															
Unit	Product	Volume	Value	Weight	Quality	Loss	Efficiency	Cost	Revenue	Profit	Margin	Yield	Throughput	Inventory	Compliance
101	Crude Oil	10000	1000000	10000	98.5	0.5	95.0	1000000	1000000	0	0%	10000	10000	10000	100%
102	Gasoline	5000	500000	5000	99.0	0.2	98.0	500000	500000	0	0%	5000	5000	5000	100%
103	Diesel	4000	400000	4000	99.5	0.1	99.0	400000	400000	0	0%	4000	4000	4000	100%
104	Jet Fuel	3000	300000	3000	99.8	0.05	99.5	300000	300000	0	0%	3000	3000	3000	100%
105	Bitumen	2000	200000	2000	99.9	0.02	99.8	200000	200000	0	0%	2000	2000	2000	100%

Refinery Efficiency Metrics															
Process	Input	Output	Loss	Efficiency	Cost	Revenue	Profit	Margin	Yield	Throughput	Inventory	Compliance	Quality	Weight	Volume
101	Crude Oil	10000	0.5	95.0	1000000	1000000	0	0%	10000	10000	10000	100%	98.5	10000	10000
102	Gasoline	5000	0.2	98.0	500000	500000	0	0%	5000	5000	5000	100%	99.0	5000	5000
103	Diesel	4000	0.1	99.0	400000	400000	0	0%	4000	4000	4000	100%	99.5	4000	4000
104	Jet Fuel	3000	0.05	99.5	300000	300000	0	0%	3000	3000	3000	100%	99.8	3000	3000
105	Bitumen	2000	0.02	99.8	200000	200000	0	0%	2000	2000	2000	100%	99.9	2000	2000

Refinery Input Data															
Unit	Product	Volume	Value	Weight	Quality	Loss	Efficiency	Cost	Revenue	Profit	Margin	Yield	Throughput	Inventory	Compliance
101	Crude Oil	10000	1000000	10000	98.5	0.5	95.0	1000000	1000000	0	0%	10000	10000	10000	100%
102	Gasoline	5000	500000	5000	99.0	0.2	98.0	500000	500000	0	0%	5000	5000	5000	100%
103	Diesel	4000	400000	4000	99.5	0.1	99.0	400000	400000	0	0%	4000	4000	4000	100%
104	Jet Fuel	3000	300000	3000	99.8	0.05	99.5	300000	300000	0	0%	3000	3000	3000	100%
105	Bitumen	2000	200000	2000	99.9	0.02	99.8	200000	200000	0	0%	2000	2000	2000	100%

Refinery Output Summary															
Unit	Product	Volume	Value	Weight	Quality	Loss	Efficiency	Cost	Revenue	Profit	Margin	Yield	Throughput	Inventory	Compliance
101	Crude Oil	10000	1000000	10000	98.5	0.5	95.0	1000000	1000000	0	0%	10000	10000	10000	100%
102	Gasoline	5000	500000	5000	99.0	0.2	98.0	500000	500000	0	0%	5000	5000	5000	100%
103	Diesel	4000	400000	4000	99.5	0.1	99.0	400000	400000	0	0%	4000	4000	4000	100%
104	Jet Fuel	3000	300000	3000	99.8	0.05	99.5	300000	300000	0	0%	3000	3000	3000	100%
105	Bitumen	2000	200000	2000	99.9	0.02	99.8	200000	200000	0	0%	2000	2000	2000	100%

Refinery Process Flow															
Unit	Product	Volume	Value	Weight	Quality	Loss	Efficiency	Cost	Revenue	Profit	Margin	Yield	Throughput	Inventory	Compliance
101	Crude Oil	10000	1000000	10000	98.5	0.5	95.0	1000000	1000000	0	0%	10000	10000	10000	100%
102	Gasoline	5000	500000	5000	99.0	0.2	98.0	500000	500000	0	0%	5000	5000	5000	100%
103	Diesel	4000	400000	4000	99.5	0.1	99.0	400000	400000	0	0%	4000	4000	4000	100%
104	Jet Fuel	3000	300000	3000	99.8	0.05	99.5	300000	300000	0	0%	3000	3000	3000	100%
105	Bitumen	2000	200000	2000	99.9	0.02	99.8	200000	200000	0	0%	2000	2000	2000	100%



101 Crude Oil  
 102 Gasoline  
 103 Diesel  
 104 Jet Fuel  
 105 Bitumen

BORG Uncommon Solo Exchange - 46 Hour Cooldown													
Ops	1 chest	2 chest	3 chest	Rare Solo Directives	125% loot exo	Comm. XP	Rodinium Particles	Unc. FC credits				Eight/Nine of Eleven	One/Two of Eleven
25-39	24,000	56,000	120,000			1,500/2,000	-	170/200/240				1/3/5	1/2/3
40-44	48,000	112,000	240,000			1,600/2,100	23/30/35	180/210/300					
45-47	96,000	224,000	480,000			1,700/2,300	24/32/37	190/220/310					
48-50	213,000	497,000	1,060,000	100	1/2	1,700/2,300	26/35/40	200/230/320					
51-55	470,000	1,100,000	2,360,000			1800/2,400	31/41/48	200/240/340					
56-57	1,110,000	2,600,000	5,500,000			1,900/2,500	34/46/53	210/250/350					
58-60	2,600,000	6,000,000	13,000,000			2,000/2,600	36/48/56	220/250/360					

BORG Rare Solo Exchange - 70 Hour Cooldown															
Ops	1 chest	2 chest	3 chest	Epic Solo Directives	250% loot exo	Comm. XP	Rodinium Particles	Unc. FC credits	Rare FC credits				One, Two, Seven of Eleven	Ghalenor	Three, Four, Eleven of Eleven
40-44	14,000	42,000	98,000			6,900/7,900	55/72	200/290/320	140/150/170				1/3/4	1/2/3	1/3/5
45-47	28,000	85,000	195,000			7,300/8,400	58/75	210/310/330	150/170/190						
48-50	63,000	190,000	440,000			7,700/9,100	63/82	220/310/340	155/175/195						
51-55	158,000	475,000	1,106,000	200	1/2/3	8,300/9,500	76/98	225/330/360	160/180/200						
56-57	435,000	1,305,000	3,045,000			8,650/9,900	85/110	230/340/370	170/190/210						
58-60	1,300,000	3,950,000	9,200,000			8,900/10,000	100/120	240/250/380	175/190/220						

BORG Epic Solo Exchange - 94 Hour Cooldown														
Ops	1 chest	2 chest	3 chest				500% loot exo	Comm. XP	Rodinium Particles	Unc. FC credits	Rare FC credits	Epic FC credits	Officers (all borg except unc.)	
40-44	20,000	60,000	140,000					17K/18K	160/180	1,000/1,050/1,200	260/280/310		1/3/5	
45-47	40,000	120,000	280,000					18K/20K	170/190	1,050/1,100/1,250	280/310/340			
48-50	92,000	275,000	645,000					18.8K/20.5K	190/200	1,100/1,150/1,300	290/310/350			
51-55	230,000	690,000	1,610,000				1/2/3	19K/21K	220/240	1,130/1,175/1,325	300/330/370	140/145/150		
56-57	620,000	1,870,000	4,350,000					20K/22K	250/270	1,200/1,250/1,400	320/350/390	140/150/160		
58-60	1,800,000	5,430,000	12,700,000					21K/22.5K	260/280	1,250/1,300/1,450	320/350/400	150/155/160		

Compiled by: @JulesVern, @BlueMandalorian and the STFC Community

Updated: 1/18/2023

Expansion Cube Exchange - 7 day Cooldown													
Talios Tier	Min. Ops Lock	Pulls		Nanoprobes		Vidar Talios Loot Exos			Borg Solo Directives			Officer Shards	
		1 chest	2 chest	Charged Nanos	Active Nanos	15 Min 100% Loot	15 Min 200% Loot	15 Min 400% Loot	Unc. Directives	Rare Directives	Epic Directives	Dezoc	Borg Queen
PULL RATE:				4 rolls	4 rolls	High Chance?			Chance? 0-2 rolls?			0-4 rolls?	4-5 rolls?
0	25	72,000	290,000	9.4k/47k	1.5k/7.5k	1			10/20/50	10/20/50	25/50/100	1/2	1/2
1-4	35	72,000	290,000	46k/53k	6.3k/8.4k	3			30/50/100	30/50/100	50/100/250	1/2/3	1/2/3
5-6	42	142,000	570,000	59k/68k	6.9k/9.2k		3		30/55/100	30/55/100	50/110/250	1/3/5	1/2/3
7-8	46	212,000	850,000	65k/75k	7.2k/9.5k		3		35/60/100	35/60/100	55/120/250	1/3/5	1/2/3
9-10	50	312,000	1,250,000	98k/110k	7.6k/10k		3		40/60/110	40/60/110	60/120/260	1/3/5	1/2/3
11	54	347,000	1,390,000	130k/150k	8.8k/12k			3	40/60/110	45/65/110	65/130/260	1/3/5	1/2/3
12	58	375,000	1,500,000	140k/160k	9.2k/14k			3	50/70/110	50/70/110	70/140/260	1/3/5	1/2/3

Compiled by: @JulesVern, @BlueMandalorian and the STFC Community

\*Note: Italicized is unconfirmed

Updated: 2/21/2023

BORG Expanded Solo Exchange - 94 Hour Cooldown														
Talios Tier	1 chest	2 chest	3 chest				500% loot exo	Comm. XP	Rodinium Particles	Unc. FC credits	Rare FC credits	Epic FC credits	Officers (all borg except unc.)	
40-44	20,000	60,000	140,000					17K/18K	160/180	1,000/1,050/1,200	260/280/310		1/3/5	
45-47	40,000	120,000	280,000					18K/20K	170/190	1,050/1,100/1,250	280/310/340			
48-50	92,000	275,000	645,000					18.8K/20.5K	190/200	1,100/1,150/1,300	290/310/350			
51-55	230,000	690,000	1,610,000				1/2/3	19K/21K	220/240	1,130/1,175/1,325	300/330/370	140/145/150		
56-57	620,000	1,870,000	4,350,000					20K/22K	250/270	1,200/1,250/1,400	320/350/390	140/150/160		
58-60	1,800,000	5,430,000	12,700,000					21K/22.5K	260/280	1,250/1,300/1,450	320/350/400	150/155/160		