

# Y-DNA Haplogroup T and its Subclades - 2019-2020

Downloading this spreadsheet as Excel retains format. Links may not copy to new sheet.

The entire work is identified by the Version Number and date given on [Main Page](#).  
 Directions for citing the document are listed on [Main Page](#).  
[Version History](#) Last revision date for this specific page: 1 January 2019



Copyright 2020, International Society of Genetic Genealogy.  
 All Rights Reserved.

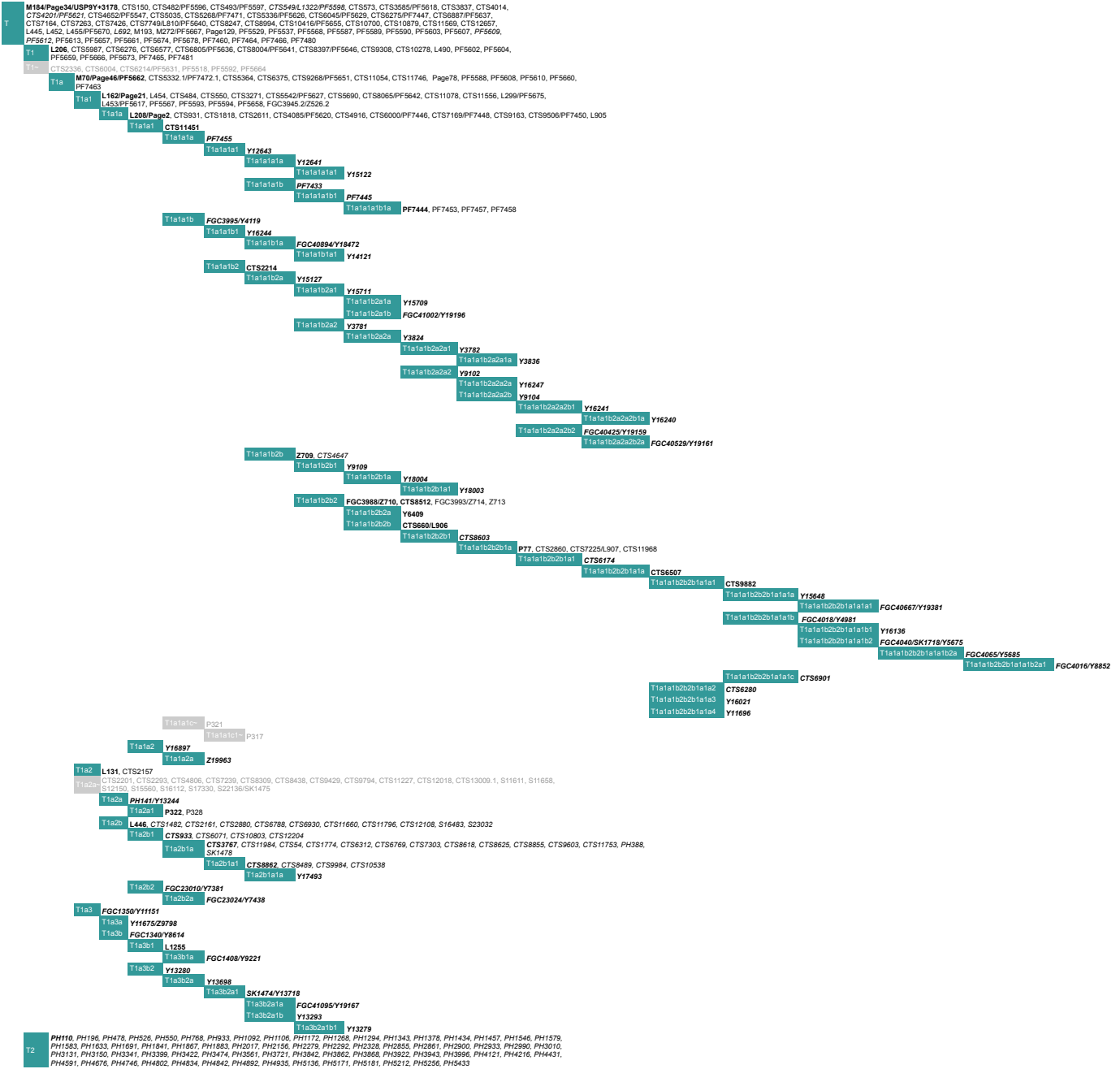
Because of continuing research, structure of the Y-DNA Haplogroup Tree changes and will be updated when possible

LINKS: [Main Page](#), [Listing Criteria](#), [Papers/Presentations Cited](#), [Y-DNA Tree Trunk](#), [Glossary](#), [SNP Index](#)

FONT COLORS: **Newly confirmed in 2019 within subclade** Confirmed within subclade Investigational items

SYMBOLS: <sup>^</sup> Indicates a next-generation sequencing entry which does not yet meet quality guidelines for minimum number of reads.  
<sup>^^</sup> Indicates an entry which does not meet quality guidelines but may be helpful.  
 ~ Indicates only an approximate location on the tree.

The criteria for a representative SNP printed in **bold** for a subclade is: traditional usage, testing done in multiple labs, and/or being found in the area of the chromosome used in recent research studies.  
 SNPs listed below in *italics* (colored black or red) are quality variants from next-generation sequencing reports consistently showing as representing that subgroup.  
**DID YOU NOTICE** that the items in gray sometimes have a long name preceding their listing that is the same as just above? In this situation, evidence seems to indicate they also seem to belong to the same subgroup, but some confirmatory evidence is not yet available.



MUTATION INFORMATION AT BOTTOM HERE







PH768	T2	rs767365717	13989484	11868778	G->C
PH933	T2	rs779296673	14137327	12016621	G->T
PH1092	T2	rs781044106	14285325	12164619	A->C
PH1106	T2	rs773330467	14296133	12175427	G->A
PH1172	T2	rs745510116	14343205	12222900	G->A
PH1268	T2	rs770690126	14484129	12333398	A->T
PH1294	T2	rs765225466	14522559	12411070	G->C
PH1343	T2	rs770524785	14577935	12466135	C->T
PH1378	T2	rs769813422	14627692	12515760	T->G
PH1434	T2	rs779889553	14722388	12610456	G->A
PH1457	T2	rs776657923	14804751	12692822	G->A
PH1546	T2	rs747305998	14971240	12859315	G->A
PH1579	T2	rs772365544	15031023	12919111	G->C
PH1583	T2	rs750399188	15033043	12921131	A->G
PH1633	T2	rs769231302	15263645	13151735	T->C
PH1691	T2	rs764970572	15418504	13306724	G->A
PH1841	T2	rs757379050	15832671	13720791	G->C
PH1867	T2	rs756585720	15877264	13785584	G->C
PH1883	T2	rs748088214	15900424	13788544	C->A
PH2017	T2	rs751190334	16061196	13949316	A->G
PH2156	T2	rs766950555	16290688	14178808	C->T
PH2279	T2	rs763867388	16443414	14331534	T->G
PH2292	T2	rs753325131	16450058	14338178	A->G
PH2328	T2	rs753071144	16513405	14401525	C->A
PH2655	T2	rs745867098	17140313	15028433	A->G
PH2651	T2	rs760501911	17144696	15032816	G->A
PH2900	T2	rs765136654	17233855	15121675	C->T
PH2933	T2	rs751906224	17289978	15178098	C->T
PH2990	T2	rs754651630	17338863	15227983	A->G
PH3010	T2	rs748413831	17354701	15242821	G->A
PH3131	T2	rs770557531	17496142	15384262	T->G
PH3150	T2	rs761120766	17527605	15415725	G->A
PH3341	T2	rs755674569	17748087	15636207	T->G
PH3399	T2	rs753042562	17805851	15693971	C->T
PH3422	T2	rs757053225	17833314	15721434	C->T
PH3474	T2	rs772023002	17899595	15777715	T->C
PH3551	T2	rs778654013	17970972	15850692	A->T
PH3721	T2	rs780141516	18148278	16036398	A->G
PH3842	T2	rs7600779118	18576362	16464482	G->T
PH3862	T2	rs748926404	18607752	16495672	G->A
PH3868	T2	rs780468944	18613798	16501918	T->A
PH3922	T2	rs747789504	18696577	16584697	T->A
PH3943	T2	rs769404253	18712269	16600389	C->T
PH3996	T2	rs781592919	18779768	16667888	G->C
PH4121	T2	rs746358742	18965435	16853555	G->C
PH4216	T2	rs755273123	19095733	16983853	G->A
PH4431	T2	rs760671499	19319734	17207854	C->T
PH4591	T2	rs770787831	19563721	17451841	C->A
PH4676	T2	rs770706104	21155683	18994697	C->A
PH4746	T2	rs781116336	21261297	19099411	C->T
PH4802	T2	rs760102971	21401101	19239215	C->T
PH4834	T2	rs754563261	21618307	19456421	T->C
PH4842	T2	rs779796278	21622834	19460948	T->C
PH4892	T2	rs773920871	21703390	19541504	A->G
PH4935	T2	rs764128199	21758571	19596685	C->T
PH5136	T2	rs768485996	22584442	20422586	C->T
PH5171	T2	rs763753688	22875971	20514085	T->G
PH5181	T2	rs774811586	22887050	20525164	G->T
PH5212	T2	rs764898316	22753683	20591797	A->G
PH5256	T2	rs751003669	22912120	20750234	G->A
PH5433	T2	rs774487376	23481259	21319373	A->G