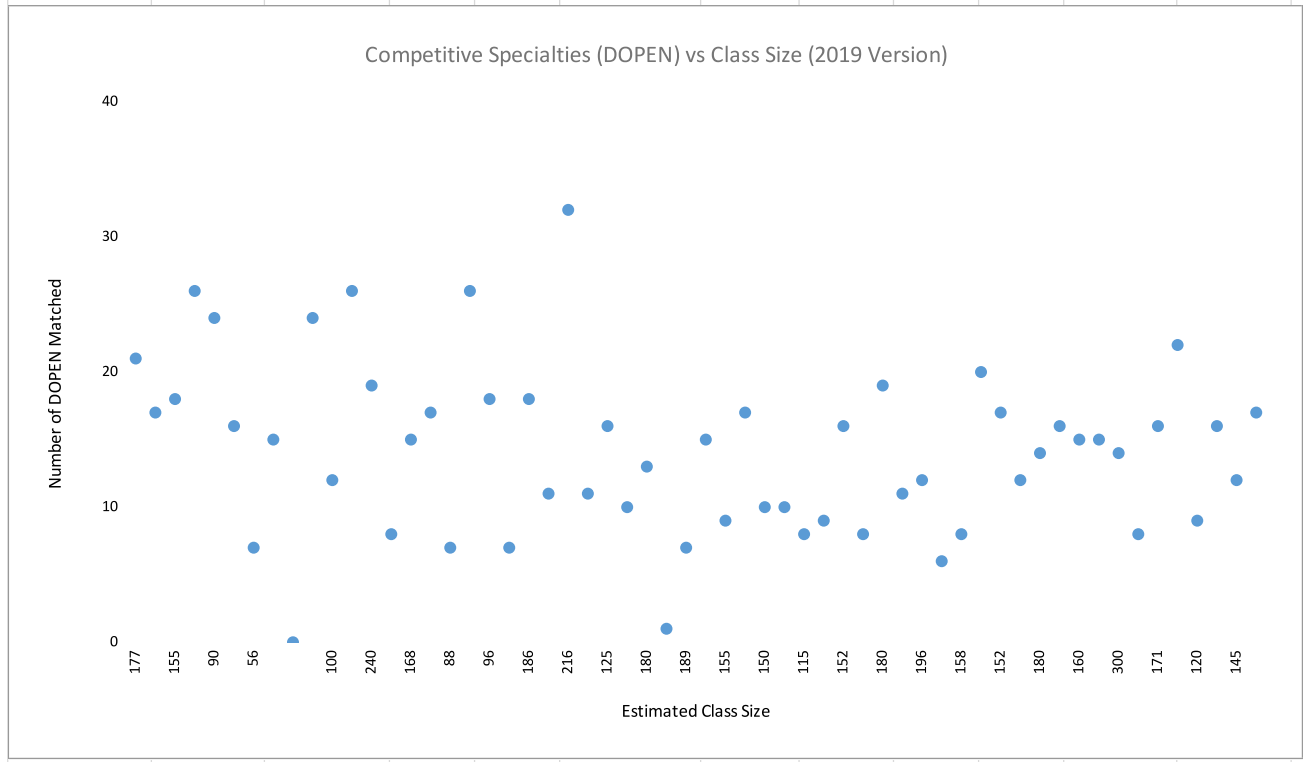


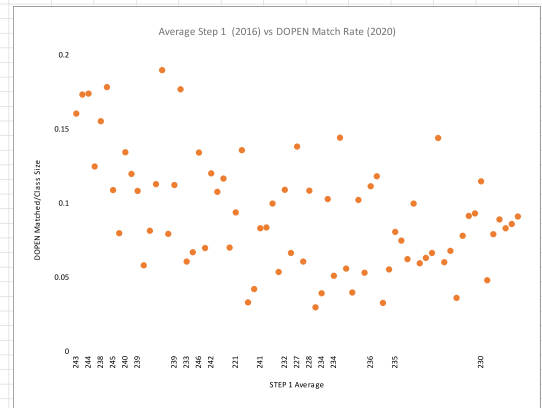
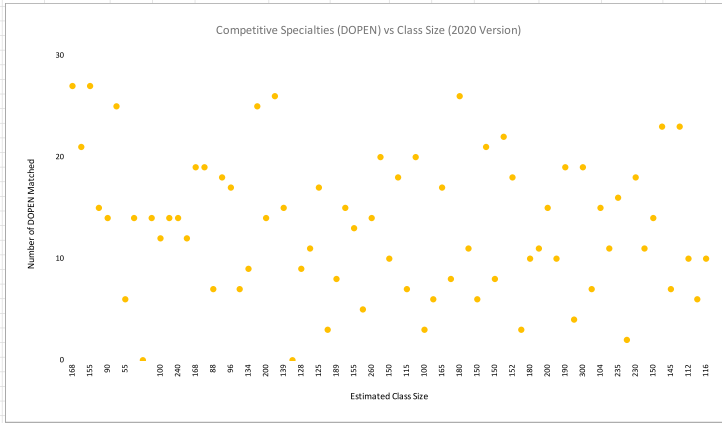
2019	Dermatology	Orthopaedics	Plastics	ENT	NeuroSurgery	Matched (DOPEN)	~Class Size	Ratio		Class Size Placeholder		
Harvard	3	4	1	5	8	21	177	11.86%				
JHU	3	3	5	2	4	17	114	14.91%				
UPenn	6	4	1	5	2	18	155	11.61%				
NYU	7	8	7	4	3	26	120	21.67%				
Stanford	8	7	2	7	4	24	90	26.67%				
Columbia	6	5	2	3	5	16	140	11.43%				
Mayo (Rochester)	4	2	0	0	1	7	56	12.50%				
UCLA	5	6	1	2	1	15	175	8.57%				
UCSF						0						
WashU	9	7	6	2	2	24	104	23.08%				
Cornell	4	4	1	2	1	12	100	12.00%				
Duke	6	7	6	4	3	26	129	20.16%				
UWSOM	3	8	5	3	2	19	240	7.92%				
Pitts	1	6	0	1	1	8	147	5.44%				
Michigan	4	3	2	6	2	15	168	8.93%		168		
Yale	6	2	2	4	3	17	100	17.00%				
UChicago	3	2	0	1	1	7	88	7.95%				
Northwestern	10	8	2	5	1	26	160	16.25%				
Vanderbilt	2	5	3	3	5	18	96	18.75%				
Sinai	2	3	2	0	0	7	115	6.09%		115		
San Diego										134		
Baylor	9	6	1	2	0	18	186	9.68%				
UNC	4	4	0	3	1	11	200	5.50%				
CWRU	9	18	0	5	9	32	216	14.81%				
Emory	3	2	4	2	0	11	139	7.91%		139		
Top 25									13.07%			
Albany										128		
Arizona-Tucson										117		
Boston University	4	3	3	4	2	16	125	12.80%				
Brown	1	3	3	0	3	10	144	6.94%				
Buffalo	1	5	1	4	2	13	180	7.22%				
CNU	0	0	0	1	0	1	90	1.11%				
Rosalind Franklin	3	3	0	0	1	7	189	3.70%				
Cincinnati	2	8	1	3	1	15	180	8.33%				
Colorado										194		
Creighton	3	5	1	0	0	9	155	5.81%				
Dell Med										50		
Drexel										260		
Einstein	5	6	1	3	2	17	183	9.29%				
EVMS	1	7	0	2	0	10	150	6.67%				
UF	0	6	0	2	2	10	130	7.69%				
FIU										120		
FSU										50		
GCSOM	3	3	0	1	1	8	115	6.96%				
GW										184		
Hofstra	1	6	1	0	1	9	100	9.00%				
Iowa	3	11	0	1	1	16	152	10.53%				
Louisville										162		
Loyola										165		
Umass	2	3	1	2	0	8	156	5.13%				
Marshall										80		
UT Houston										234		
Miami	6	7	2	1	3	19	180	10.56%				
Minnesota	2	7	0	2	0	11	241	4.56%				
MCG										230		
MCW	0	7	1	4	0	12	196	6.12%				
Morehouse										100		
MSU										150		
NYMC	1	3	0	2	0	6	205	2.93%				
OHSU	4	2	1	1	0	8	158	5.06%				
OSU	4	10	1	2	3	20	197	10.15%				
Penn State	5	5	3	2	2	17	152	11.18%				
Quinnipiac										91		
Rush	1	3	0	6	2	12	127	9.45%				

SLU	1	5	0	6	2	14	180	7.78%		
South Alabama										67
Stony Brook										136
SUNY-D	7	6	0	2	1	16	200	8.00%		
SUNY-U	2	8	0	4	1	15	160	9.38%		
Tulane	4	5	1	5	0	15	190	7.89%		
UCR										67
UIC	4	6	0	3	1	14	300	4.67%		
UMKC										105
Rochester	1	3	1	2	1	8	104	7.69%		104
USF	2	7	1	2	4	16	171	9.36%		
UTMB										235
UTRGV										55
UTSW	4	8	3	2	5	22	230	9.57%		
UVM	2	4	1	1	1	9	120	7.50%		
Virginia										150
VCU	2	9	1	4	0	16	200	8.00%		
Wake Forest	3	7	0	1	1	12	145	8.28%		
Wayne	2	7	1	3	4	17	290	5.86%		
WVU										112
WMED										72
Wright State										116
<b>Total</b>	<b>203</b>	<b>312</b>	<b>82</b>	<b>149</b>	<b>106</b>	<b>823</b>	<b>9010</b>	<b>9.13%</b>		



2020	Dermt	Ortho	Plastics	ENT	NeuroSurgery	Matched (DOPEN)	~ Class Size	Ratio	2016 Step 1 Scores
Harvard	8	12	1	4	2	27	168	16.07%	243
JHU	6	5	2	6	2	21	121	17.36%	238
UPenn	10	9	3	3	2	27	155	17.42%	244
NYU	3	7	0	2	3	15	120	12.50%	241
Stanford	4	3	1	2	4	14	90	15.56%	238
Columbia 2021	6	8	2	5	4	25	140	17.86%	
Mayo	3	0	2	1	0	6	55	10.91%	245
UCLA	5	4	1	2	2	14	175	8.00%	231
UCSF						0			
WashU	2	6	2	1	3	14	104	13.46%	240
Cornell	4	1	2	2	3	12	100	12.00%	235
Duke	4	4	4	1	1	14	129	10.85%	239
UWSOM	7	2	3	2	0	14	240	5.83%	228
Pitts	2	3	3	1	3	12	147	8.16%	
Michigan	6	6	0	5	2	19	168	11.31%	
Yale 2021	6	7	2	3	1	19	100	19.00%	
UChicago	2	3	0	2	0	7	88	7.95%	239
Northwestern	2	9	2	2	3	18	160	11.25%	239
Vanderbilt	2	4	4	5	2	17	96	17.71%	243
Sinal 2019	2	3	2	0	0	7	115	6.09%	233
San Diego	3	2	1	3	0	9	134	6.72%	234
Baylor	10	9	1	4	1	25	186	13.44%	246
UNC	4	7	0	2	1	14	200	7.00%	
CWRU	4	10	2	6	4	26	216	12.04%	242
Emory	3	7	0	4	1	15	139	10.79%	236
Top 25 Med Schools						0		11.69%	
Albany	0	5	1	2	1	9	128	7.03%	
Arizona-Tucson	4	3	1	1	2	11	117	9.40%	221
Boston University	3	8	1	5	0	17	125	13.60%	236
CNU	0	2	0	1	0	3	90	3.33%	
Kosaland Franklin	1	4	0	3	0	8	189	4.23%	
Cincinnati	2	8	1	3	1	15	180	8.33%	241
Craigton	2	8	1	2	0	13	155	8.39%	226
Dell Med	1	2	1	0	1	5	50	10.00%	
Drexel	4	8	1	1	0	14	260	5.38%	
Einstein	6	3	3	6	2	20	183	10.93%	232
EVMS	3	4	2	0	1	10	150	6.67%	236
UF	3	6	5	2	2	18	130	13.85%	227
GCSOM	3	3	0	1	0	7	115	6.09%	
GW	4	10	1	4	1	20	184	10.87%	228
Hofstra	0	2	0	1	0	3	100	3.00%	236
Iowa	0	5	0	1	0	6	152	3.95%	234
Loyola	6	3	1	6	1	17	165	10.30%	
Umass	3	5	0	0	0	8	156	5.13%	234
Miami	8	7	1	4	6	26	180	14.44%	232
MCW	0	6	2	3	0	11	196	5.61%	
MSU	0	5	0	1	0	6	150	4.00%	
NYMC	1	11	1	3	5	21	205	10.24%	
OHSU	2	3	0	1	2	8	150	5.33%	227
OSU	3	10	2	6	1	22	197	11.17%	236
Penn State	4	8	3	1	2	18	152	11.84%	
Quinnipiac	1	1	0	1	0	3	91	3.30%	
SLU	5	2	2	0	1	10	180	5.56%	229
Stony Brook	1	5	1	2	2	11	136	8.09%	235
SUNY-D	4	4	0	5	2	15	200	7.50%	
SUNY-U	0	5	0	2	3	10	160	6.25%	
Tulane	7	8	2	2	0	19	190	10.00%	
UCR	2	1	1	0	0	4	67	5.97%	
UIC	7	5	0	2	5	19	300	6.33%	230
UMKC	1	5	1	0	0	7	105	6.67%	
Rochester	4	8	2	0	1	15	104	14.42%	
USF	3	2	2	2	2	11	182	6.04%	
UTMB	4	4	2	2	4	16	235	6.81%	
UTRGV	0	1	0	1	0	2	55	3.64%	
UTSW	7	7	1	3	0	18	230	7.83%	234
UVM	1	4	2	3	1	11	120	9.17%	
Virginia	4	6	3	1	0	14	150	9.33%	
VCU	4	9	1	3	6	23	200	11.50%	230
Wake Forest	0	3	2	1	1	7	145	4.83%	231
Wayne	8	9	1	3	2	23	290	7.93%	
WVU	4	2	3	1	0	10	112	8.93%	
WMED	1	4	0	0	1	6	72	8.33%	
Wright State	3	7	0	0	0	10	116	8.62%	
<b>Total</b>	<b>242</b>	<b>372</b>	<b>94</b>	<b>160</b>	<b>103</b>	<b>961</b>	<b>10529</b>	<b>9.13%</b>	

2020 Match	US MD Match	US MD Grads
Dermatology	388	
Orthopaedics	685	
Plastics	165	
ENT	310	
Neurosurgery	203	
<b>Total</b>	<b>1751</b>	<b>19340</b>
	<b>9.05%</b>	



2021	Dermatology	Orthopaedics	Plastics	ENT	NeuroSurgery	Matched (DOPEN)	~Class Size	Ratio		Class Size Placeholder		
Harvard	12	7	2	6	1	28	151	18.54%				
JHU	5	3	2	7	5	22	121	18.18%				
UPenn	6	4	6	6	2	24	155	15.48%				
NYU	6	7	4	3	1	21	120	17.50%				
Stanford	3	5	2	5	3	18	90	20.00%				
Columbia	6	8	2	5	4	25	140	17.86%				
Mayo (Rochester)	4	5	1	2	1	13	56	23.21%				
UCLA	10	10	3	2	3	28	175	16.00%				
UCSF						0						
WashU	4	6	4	3	5	22	104	21.15%				
Cornell	3	6	1	3	0	13	100	13.00%				
Duke	3	8	2	3	2	18	129	13.95%				
UWSOM	2	11	0	4	1	18	240	7.50%				
Pitts	2	2	1	3	4	12	147	8.16%				
Michigan						0				168		
Yale	6	7	2	3	1	19	100	19.00%				
UChicago						0				88		
Northwestern	2	7	1	2	4	16	160	10.00%				
Vanderbilt	5	4	2	3	7	21	96	21.88%				
Sinai						0				115		
San Diego						0				134		
Baylor	9	10	3	2	2	26	186	13.98%				
UNC	3	4	1	5	1	14	200	7.00%				
CWRU	8	12	3	6	7	36	216	16.67%				
Emory						0				139		
Top 25						0			15.74%			
Albany						0				128		
Arizona-Tucson						0				117		
Boston University						0				125		
Brown	0	7	1	0	3	11	144	7.64%				
Buffalo	0	6	1	2	2	11	180	6.11%				
CNU	1	1	1	3	0	6	90	6.67%				
Rosalind Franklin	4	7	1	1	0	13	189	6.88%				
Cincinnati	2	8	1	2	1	14	180	7.78%				
Colorado	3	8	0	1	1	13	194	6.70%				
Creighton						0				155		
Dell Med	1	3	0	0	0	4	50	8.00%				
Drexel						0				260		
Einstein	5	4	1	2	2	14	183	7.65%				
EVMS	0	3	0	3	0	6	150	4.00%				
UF						0				130		
FIU	1	3	1	1	3	9	120	7.50%				
FSU	3	1	1	1	1	7	50	14.00%				
GCSOM	1	2	1	1	2	7	115	6.09%				
GW						0				184		
Hofstra	1	4	1	1	0	7	100	7.00%				
Iowa	4	5	0	2	1	12	152	7.89%				
Louisville	5	5	0	0	0	10	162	6.17%				
Loyola						0				165		
Umass						0				156		
Marshall	0	5	0	3	0	8	80	10.00%				
UT Houston	6	8	2	2	5	23	234	9.83%				
Miami	6	14	5	4	2	31	180	17.22%				
Minnesota	4	8	1	3	1	17	241	7.05%				
MCG	6	8	1	4	3	22	230	9.57%				
MCW	0	11	1	4	1	17	196	8.67%				
Morehouse	0	5	0	0	2	7	100	7.00%				
MSU						0				150		
NYMC	1	5	1	1	2	10	205	4.88%				
OHSU	1	6	1	2	0	10	158	6.33%				
OSU	5	10	2	3	3	23	197	11.68%				
Penn State	0	6	2	0	2	10	152	6.58%				
Quinnipiac	0	2	0	0	1	3	91	3.30%				
Rush	2	2	1	3	1	9	150	6.00%				

SLU	4	5	1	2	0	12	180	6.67%				
South Alabama	0	5	0	2	0	7	67	10.45%				
Stony Brook						0					136	
SUNY-D	4	7	0	3	0	14	200	7.00%				
SUNY-U	3	6	1	2	1	13	160	8.13%				
Tulane	3	9	1	2	2	17	190	8.95%				
UCR						0					67	
UIC	7	5	0	2	5	19	300	6.33%				
UMKC	1	0	1	1	1	4	105	3.81%				
Rochester						0					104	
USF	2	5	2	0	0	9	171	5.26%				
UTMB	3	6	1	2	1	13	235	5.53%				
UTRGV	1	2	0	1	0	4	55	7.27%				
UTSW	9	9	0	3	1	22	230	9.57%				
UVM	2	1	2	1	1	7	120	5.83%				
Virginia	1	3	0	3	3	10	150	6.67%				
VCU	5	5	2	4	4	20	200	10.00%				
Wake Forest	4	4	4	1	3	16	145	11.03%				
Wayne						0					290	
WVU	2	1	0	1	2	6	112	5.36%				
WMED	1	2	1	0	0	4	72	5.56%				
Wright State	0	5	1	1	0	7	116	6.03%				
<b>Total</b>	<b>213</b>	<b>363</b>	<b>86</b>	<b>153</b>	<b>117</b>	<b>925</b>	<b>9767</b>	<b>9.47%</b>				

