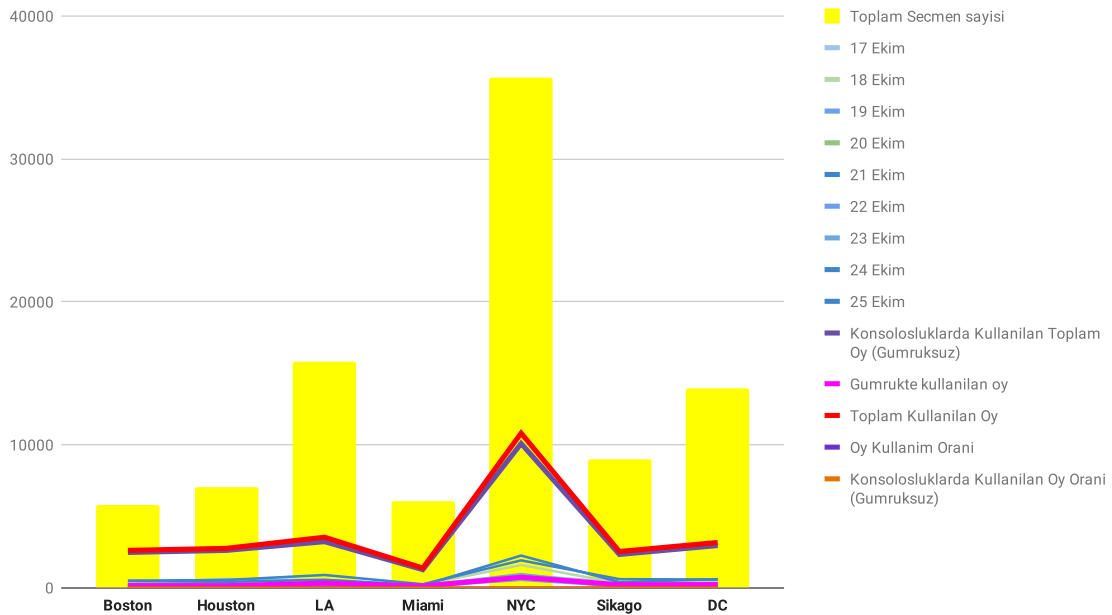


	Boston	Houston	LA	Miami	NYC	Sikago	DC	Toplam
17 Ekim	300	605	521	172	888	374	322	3182
18 Ekim	346	433	479	207	1586	311	490	3852
19 Ekim	130	81	145	79	549	103	182	1269
20 Ekim	202	100	143	97	604	150	176	1472
21 Ekim	177	106	124	81	683	108	179	1458
22 Ekim	143	128	161	83	667	107	204	1493
23 Ekim	206	212	202	134	949	189	229	2121
24 Ekim	491	537	889	242	1912	597	571	5239
25 Ekim	469	407	556	167	2247	387	594	4827
Konsolosluklarda Kullanilan Toplam Oy (Gumruksuz)	2,464	2,609	3,220	1,262	10,085	2,326	2,947	24,913
Gumrukte kullanilan oy	147	143	312	112	729	205	218	1,866
Toplam Kullanilan Oy	2,611	2,752	3,532	1,374	10,814	2,531	3,165	26,779
Toplam Secmen sayisi	5,825	6,997	15,800	6,092	35,689	9,010	13,924	93,337
Oy Kullanim Orani	44.82%	39.33%	22.35%	22.55%	30.30%	28.09%	22.73%	28.69%
Konsolosluklarda Kullanilan Oy Orani (Gumruksuz)	42.30%	37.29%	20.38%	20.72%	28.26%	25.82%	21.16%	26.69%

26. Milletvekili Secimleri ABD Oy Kullanimi



	Boston	Houston	LA	Miami	NYC	Sikago	DC	Toplam	
17 Ekim	300	605	521	172	888	374	322	3182	
18 Ekim	346	433	479	207	1586	311	490	3852	
19 Ekim	130	81	145	79	549	103	182	1269	
20 Ekim	202	100	143	97	604	150	176	1472	
21 Ekim	177	106	124	81	683	108	179	1458	
22 Ekim	143	128	161	83	667	107	204	1493	
23 Ekim	206	212	202	134	949	189	229	2121	
24 Ekim	491	537	889	242	1912	597	571	5239	
25 Ekim	469	407	556	167	2247	387	594	4827	
26. MV Secimi Toplam Kullanilan Oy	2464	2609	3220	1262	10085	2326	2947	24913	26.69%
25. MV Secimi Toplam Kullanilan Oy	1675	2012	2065	679	6919	1718	2347	17415	18.66%
Oy kullanim Orani	147.10%	129.67%	155.93%	185.86%	145.76%	135.39%	125.56%	143.05%	

25. ve 26. MV Secimi ABD Oyu Karsilastirmasi

