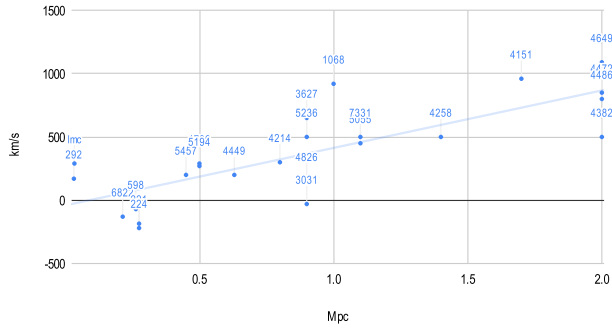
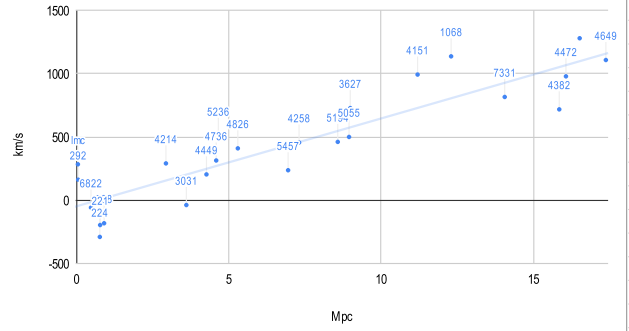




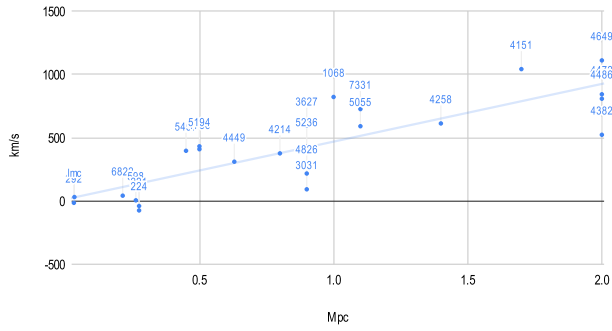
Hubble's helio-radial data



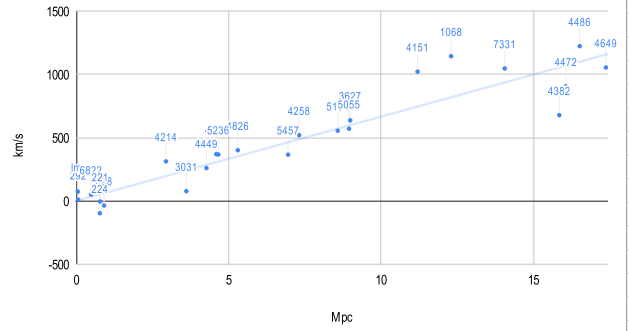
Modern helio-radial data



Hubble's solar motion-corrected data



Modern solar motion-corrected data



- [1] v helio with solar motion removed
- [2] helio-radial velocities in cartesian coordinates
- [3] how well the procedure removes solar motion from helio-radial velocity
- [4] mega parsecs
- [5] Heliocentric velocity; km/s
- [6] Right ascension; hours
- [7] Right ascension; minutes
- [8] Right ascension; converted to degrees
- [9] Declination; degrees
- [10] Velocity w/r to the Galactic Standard of Rest; km/s
- [11] mega parsecs
- [12] modern heliocentric velocity; km/s
- [13] modern galactocentric velocity; km/s
- [14] used to check the correctness of calculations removing the solar motion from v helio, using modern data as input
- [15] solar motion velocity and direction per Hubble
- [16] modern value for solar motion; derived from values below
- [17] components of solar motion
- [18] cartesian c. of solar apex and orbit; used to calculate modern value of solar motion
- [19] peculiar motion w/r solar standard of rest
- [20] galactic orbital motion