

Flyer?

CMS only!

CMS only!

This image shows a large grid of empty cells, likely a spreadsheet or data table. The grid is composed of many small, empty rectangular cells arranged in rows and columns. A vertical grey bar is present on the right side of the grid, extending from the top to the bottom. The text 'Flyer?' is located in the top-left corner, 'CMS only!' is in the top-center, and another 'CMS only!' is in the top-right corner. The grid is otherwise empty of data.

Flyer?

CMS only!

CMS only!

The image shows a large grid of graph paper. The grid is composed of small squares. A vertical column of squares is shaded gray, located approximately one-third of the way from the right edge of the grid. The text labels 'Flyer?', 'CMS only!', and 'CMS only!' are positioned at the top of the first, the shaded column, and the second column from the right, respectively.

WARNINGS!

Only fill in one line for your school or institution.

Do not overwrite anyone else's data.

Do not edit or change the plots in the plot tabs.

ATLAS only!

ATLAS only!

ATLAS Report Page

School or Institution	City	Country	Datasets (use id in HYPATIA)	No. of events for each value of PHI:														No. of events for each value of THETA:								
				10	30	50	70	90	110	130	150	170	190	210	230	250	270	290	310	330	350	10	30	50	70	90

WARNINGS!

Only fill in one line for your school or institution.

Do not overwrite anyone else's data.

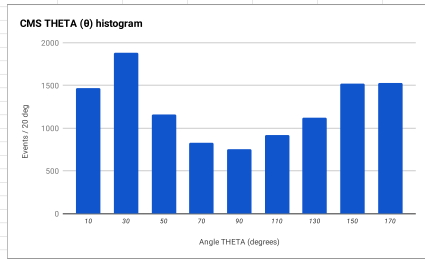
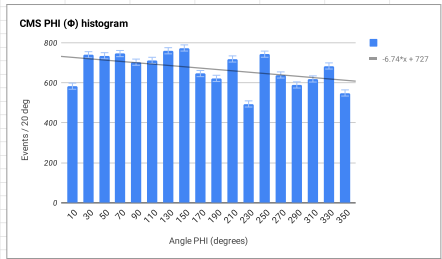
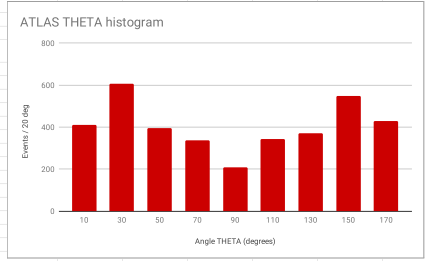
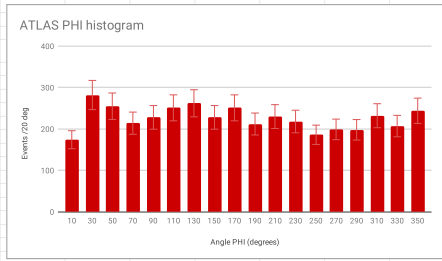
Do not edit or change the plots in the plot tabs.

ATLAS only!

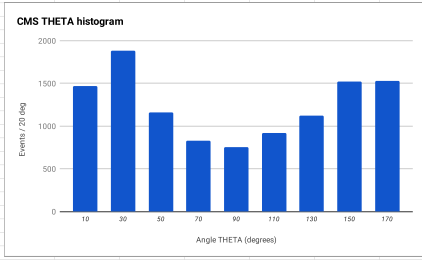
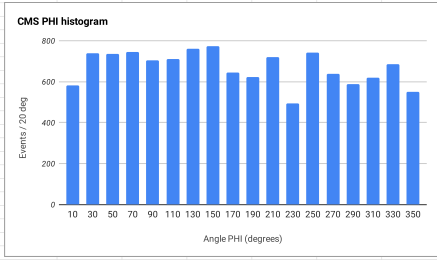
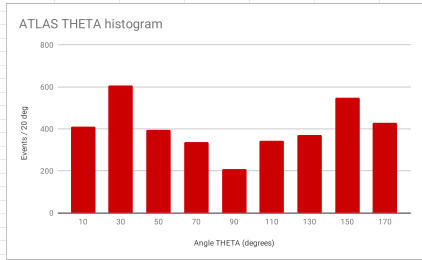
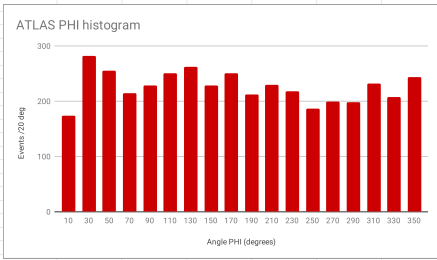
ATLAS only!

ATLAS Report Page

School or Institution	City	Country	Datasets (use id in HYPATIA)	No. of events for each value of PHI:														No. of events for each value of THETA:								
				10	30	50	70	90	110	130	150	170	190	210	230	250	270	290	310	330	350	10	30	50	70	90



Other plots:



Other plots:

Masterclass Data Set				1	2	3	4	5	6	7	8	9	10	11	12	13	14	15	16	17	18	19	20	21	22	23	24	25	26	27	28	29	30	31	32	33	34	35	36	37	38	39	40	41	42	43	44	45	46	47	48	49	50	51	52	53	54	55	56	57	58	59	60	61	62	63	64	65	66	67	68	69	70	71	72	73	74	75	76	77	78	79	80	81	82	83	84	85	86	87	88	89	90	91	92	93	94	95	96	97	98	99	100	
School	City	Country	Counts	0	1	2	3	4	5	6	7	8	9	10	11	12	13	14	15	16	17	18	19	20	21	22	23	24	25	26	27	28	29	30	31	32	33	34	35	36	37	38	39	40	41	42	43	44	45	46	47	48	49	50	51	52	53	54	55	56	57	58	59	60	61	62	63	64	65	66	67	68	69	70	71	72	73	74	75	76	77	78	79	80	81	82	83	84	85	86	87	88	89	90	91	92	93	94	95	96	97	98	99	100
Example High School	Anytown	Canada		0	1	2	3	4	5	6	7	8	9	10	11	12	13	14	15	16	17	18	19	20	21	22	23	24	25	26	27	28	29	30	31	32	33	34	35	36	37	38	39	40	41	42	43	44	45	46	47	48	49	50	51	52	53	54	55	56	57	58	59	60	61	62	63	64	65	66	67	68	69	70	71	72	73	74	75	76	77	78	79	80	81	82	83	84	85	86	87	88	89	90	91	92	93	94	95	96	97	98	99	100
				0	1	2	3	4	5	6	7	8	9	10	11	12	13	14	15	16	17	18	19	20	21	22	23	24	25	26	27	28	29	30	31	32	33	34	35	36	37	38	39	40	41	42	43	44	45	46	47	48	49	50	51	52	53	54	55	56	57	58	59	60	61	62	63	64	65	66	67	68	69	70	71	72	73	74	75	76	77	78	79	80	81	82	83	84	85	86	87	88	89	90	91	92	93	94	95	96	97	98	99	100
				0	1	2	3	4	5	6	7	8	9	10	11	12	13	14	15	16	17	18	19	20	21	22	23	24	25	26	27	28	29	30	31	32	33	34	35	36	37	38	39	40	41	42	43	44	45	46	47	48	49	50	51	52	53	54	55	56	57	58	59	60	61	62	63	64	65	66	67	68	69	70	71	72	73	74	75	76	77	78	79	80	81	82	83	84	85	86	87	88	89	90	91	92	93	94	95	96	97	98	99	100
				0	1	2	3	4	5	6	7	8	9	10	11	12	13	14	15	16	17	18	19	20	21	22	23	24	25	26	27	28	29	30	31	32	33	34	35	36	37	38	39	40	41	42	43	44	45	46	47	48	49	50	51	52	53	54	55	56	57	58	59	60	61	62	63	64	65	66	67	68	69	70	71	72	73	74	75	76	77	78	79	80	81	82	83	84	85	86	87	88	89	90	91	92	93	94	95	96	97	98	99	100