

**Joint Capacity Building Workshop  
of the South Central and Eastern European Regional Information Network (SCERIN)  
and the Mediterranean Regional Information Network (MedRIN)**

*Title: Land Cover Change (LCC) and Extreme Events in the Context of Climate Change*

**Agenda at a Glance**

Date	13-Jul-24	14-Jul-24	15-Jul-24	16-Jul-24	17-Jul-24	18-Jul-24	19-Jul-24	20-Jul-24
<i>Day</i>	<i>Sat</i>	<i>Sun</i>	<i>Mon</i>	<i>Tue</i>	<i>Wed</i>	<i>Thu</i>	<i>Fri</i>	<i>Sat</i>
<b>Joint WS*</b>			<i>travel</i>	Day 1 Plenary	Day 2 +	Day 3 !!	Day 4 Closing	<i>travel</i>
<b>TAT</b>	<i>travel</i>	Day 1 Training	Day 2 Training	Day 3 Plenary	Day 4 Training	<i>travel</i>		

\* Joint Workshop of the GOF-C-GOLD Regional Information Networks (MedRIN-10 and SCERIN-11)

!! Working sessions of SCERIN and MedRIN

+ Field visit of local examples of local LCLUC - Samaria gorge

**Links to:**

[Meeting minutes \(for organisers - click to follow\)](#)

Summary of the minutes will be shared after the workshop as pdf.

Joint SCERIN and MedRIN Workshop Website

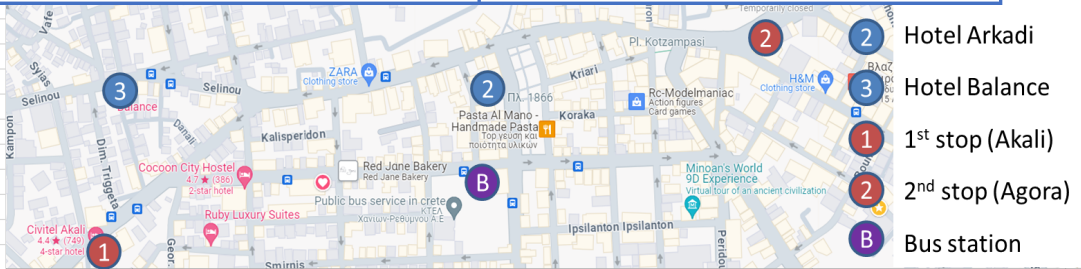
<https://www.scerin.eu/scerin2024/index.html>

Trans Atlantic Training (TAT) Agenda and Website

[TAT2024 Programme.xlsx - Google Sheets](#)

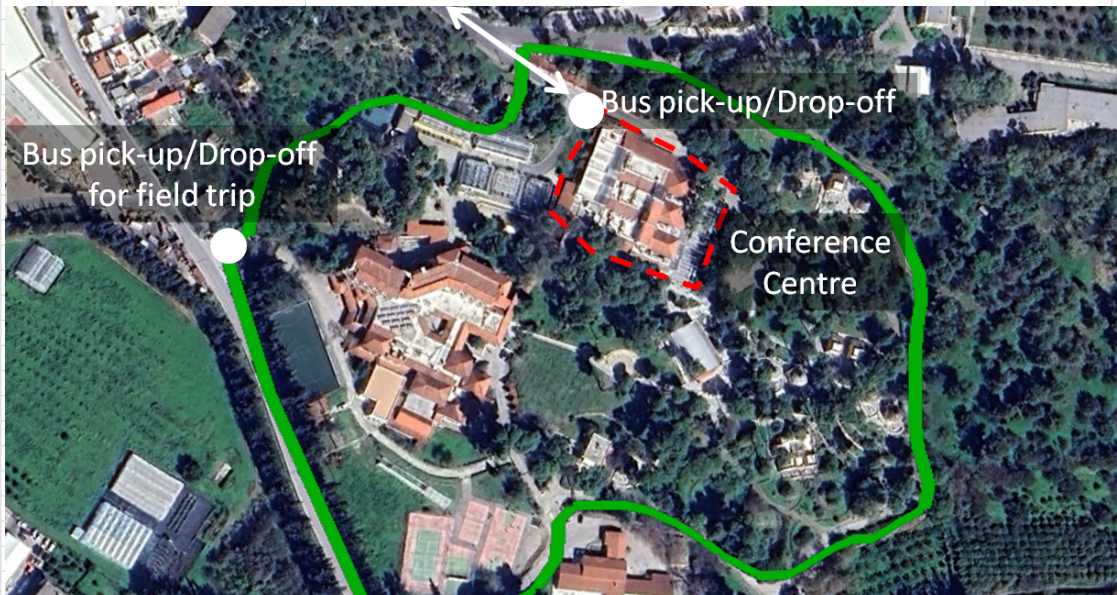
Participants arriving at Chania by plane can take a bus that runs every half an hour and arrives at Chania Bus Station (purple circle)  
 The cost for the bus fare is 2.5 Euros that can be paid by cash on the bus, or online at: <https://www.e-ktel.com/en/services/dromologia>

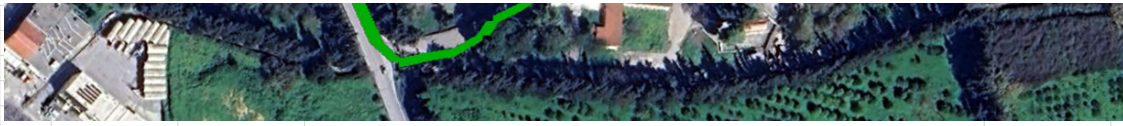
ΧΑΝΙΑ-ΑΕΡΟΔΡΟΜΙΟ ΧΑΝΙΩΝ CHANIA-CHANIA AIRPORT							ΑΕΡΟΔΡΟΜΙΟ ΧΑΝΙΩΝ-ΧΑΝΙΑ CHANIA AIRPORT-CHANIA						
ΚΑΘΕ ΜΕΡΑ/EVERY DAY							ΚΑΘΕ ΜΕΡΑ/EVERY DAY						
04:30	06:00	06:30	07:45	08:30	09:15	10:15	06:00	07:30	08:15	09:15	10:00	10:30	11:15
11:15	12:00	12:30	13:00	13:30	14:00	14:30	11:45	12:50	13:30	14:00	14:30	15:00	15:30
15:00	15:30	16:00	16:30	17:00	17:30	18:00	16:00	16:30	17:00	17:30	18:00	18:30	19:00
18:30	19:00	19:30	20:00	20:30	21:00	21:30	19:30	20:00	20:30	21:00	21:30	22:00	22:50
		22:30	23:00	00:00 <sup>1</sup>					23:30	00:00	00:45 <sup>1</sup>		
<i><sup>1</sup> ΙΣΧΥΕΙ ΜΟΝΟ ΚΑΘΕ ΤΡΙΤΗ &amp; ΣΑΒΒΑΤΟ/ VALID ONLY EVERY TUESDAY &amp; SATURDAY</i>							<i><sup>1</sup> ΙΣΧΥΕΙ ΜΟΝΟ ΚΑΘΕ ΤΡΙΤΗ &amp; ΣΑΒΒΑΤΟ/ VALID ONLY EVERY TUESDAY &amp; SATURDAY</i>						



A shuttle bus will be picking the participants every day at 8.20 (stop 1) and 8.30 (stop 2) every morning to bring them to MAICH from the two stops (Akali Hotel and Agora Bus Stop)

Date	Pick up time	Route
Tuesday 16/7/2024	8:20	08.20 Akali Hotel (1st bus stop) – 08.30 Agora Bus Stop (2nd bus stop) – MAICH
	18:30	18:30 MAICH – Agora Bus Stop (2nd bus stop) – Akali Hotel (1st bus stop)
Wednesday 17/7/2024	8:20	08.20 Akali Hotel (1st bus stop) – 08.30 Agora Bus Stop (2nd bus stop) – MAICH - Omalos
	15:15	15.15 Omalos – Akali Hotel (1st bus stop) – Agora Bus Stop (2nd bus stop) – MAICH
Thursday 18/7/2024	8:20	08.20 Akali Hotel (1st bus stop) – 08.30 Agora Bus Stop (2nd bus stop) – MAICH
	22:00	22:00 MAICH – Agora Bus Stop (2nd bus stop) - Akali Hotel (1st bus stop)
Friday 19/7/2024	8:20	08.20 Akali Hotel (1st bus stop) – 08.30 Agora Bus Stop (2nd bus stop) – MAICH
	17:30	17:30 MAICH – Agora Bus Stop (2nd bus stop) - Akali Hotel (1st bus stop)





<b>EUROPEAN EMERGENCY NUMBER : 112</b>				
<b>FIRST AID – HOSPITAL</b>				
First Aid: 166				
Hospital of Chania: 2821 0 22000				
<b>AUTHORITY</b>				
Emergency Police: 100				
Fire Department: 199				
Police: 2821 0 28744				
Port Authority: 2821 0 98888				



DAY		Presenter	Country	Poster Title
Day 1	1	Miroslav Píkl	Czech Republic	CHIME L2B product - Cal/Val activities
Day 1	2	Festina Sadiku	Kosovo	Visualization of Landscape Changes in a 3D Environment using the Storytelling Approach: The Example of the City of Pristina
Day 1	3	Petya Campbell	USA	Combining Proximal and Space-borne Reflectance Time Series for Evaluation of Deciduous Forest Photosynthetic Function and Productivity
Day 1	4	Dimitris Tsirantonakis	Greece	Urban trees phenology and local climate dynamics of a residential area in Berlin
Day 1	5	Tatjana Veljanovski	Slovenia	Monitoring forest response using Sentinel-2 observations to climatic factors along the Carpathian mountains
Day 1	6	Rizos-Theodoros Chadoulis	Greece	Assessing the Impact of the 2023 Storm Daniel Flood in Pineios River Estuaries: An Analysis of Crop-Type and Inundation Mapping Using Sentinel-1/2 Imagery
Day 1	7	Gordana Jakovljevic	Bosnia and Herzegovina	Monitoring Water Levels and Discharges
Day 1	8	Rosa Lasaponara	Italy	Use of Earth Observation for the detection, monitoring and preservation of Cultural and Natural Heritage
Day 1	9	Diofantos Hadjimitsis/ Andreas Christofe	Cyprus	AI OBSERVER: Artificial Intelligence in Earth Observation for Disaster Risk Reduction
Day 1	10	Diofantos Hadjimitsis/ Andreas Christofe	Cyprus	CARBONICA: Carbon footprint in agriculture in Cyprus using Earth Observation
Day 1	11	Diofantos Hadjimitsis/ Andreas Christofe	Cyprus	EXCELSIOR: Earth Observation in the EMMENA region
Day 1	12	Florea Sergiu-Constantin	Romania	Comparing terrestrial laser scanning based tree shape reconstruction algorithms for European beech trees
Day 4	1	Molly Sears	USA	Are Farmers Adapting to Drier Conditions? Crop Choices and Irrigation Adoption in the Danube River Basin
Day 4	2	Giorgi Ghambashidze	Georgia	Using Remote Sensing Data in Soil Organic Carbon Stock Assessment
Day 4	3	Jana Albrechtová	Czech Republic	Young silver fir for afforestation after bark beetle calamity in the Czechia: pilot study for RS-based physiological evaluation using leaf-level reflectance and needle functional traits
Day 4	4	Jana Albrechtová	Czech Republic	Evaluating the potential of various remote sensing data for forest health monitoring: a case study in the Krkonose Mts., Czechia
Day 4	5	Monika Tomaszewska (flash talk only)	USA	NASA's Application for Extracting and Exploring Analysis Ready Samples (AppEARS) as a geospatial data access and processing tool
Day 4	6	Lachezar Filchev	Bulgaria	Harnessing Data and Technology to Combat COVID-19 - Smart4COV19 Project
Day 4	7	Rosa Lasaponara	Italy	Satellite radar multi- and hyper-temporal monitoring of vegetation
Day 4	8	Olga Brovkina	Czech Republic	Monitoring of forest mistletoe using airborne remote sensing
Day 4	9	Petya Campbell	USA	The NASA SBG/SHIFT Campaign: Seasonal Change in Canopy Photosynthetic Function for Q. agrifolia

July 17 (Wednesday), 2024 Day 2	
8:20 (1) 8:30 (2)	<i>BUS picking participants from bus stops 1 and 2</i>
9:00 – 10:00	Bus drive to the entrance of the gorge
10:00 – 10:30	Introduction of the history and importance of the gorge by the Forest Directorate of Chania
10:30 – 12:30	Walking in the gorge. Participants will be allowed one hour to walk into it and then another one hour to exit the gorge from the same entrance point.
12:30 – 12:45	Assembly and moving to the restaurant
12:45 – 15:15	<i>Lunch</i>
15:15 – 16:15	Return to MAICH and hotels

**Important Information**

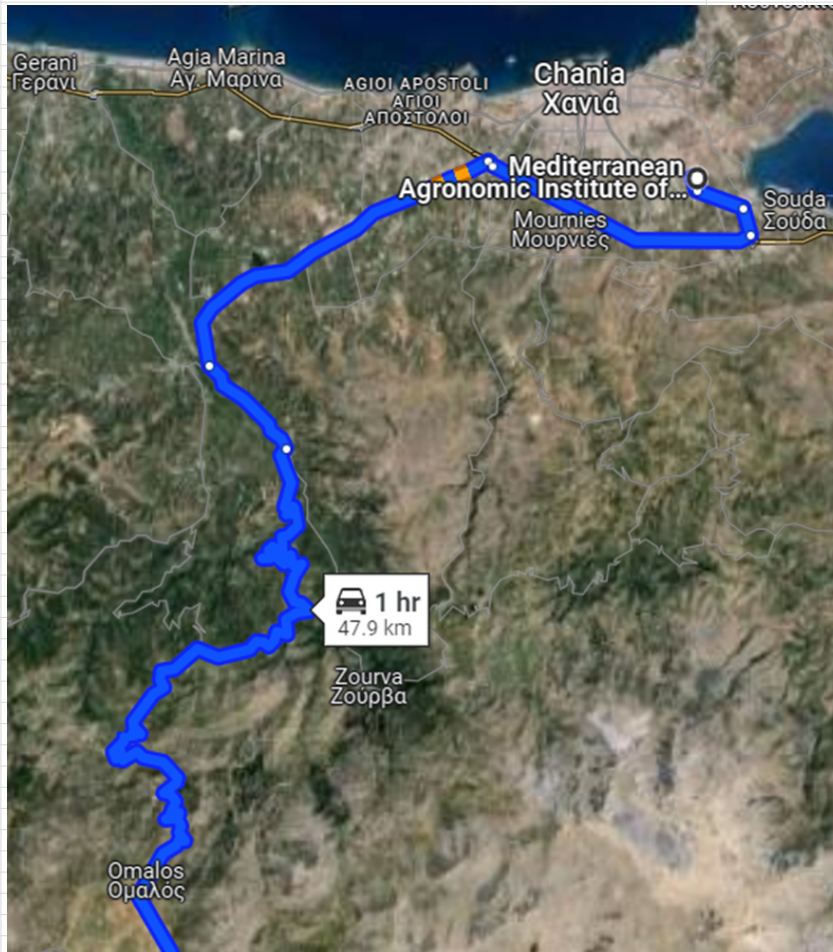
Be advised that the first stage of the gorge is properly maintained but a rather steep and rocky downhill path. Proper walking shoes are essential and you may also consider walking batons. Even though the hike will take place before noon, it is also advisable to wear a hat and apply sunblock to parts of your body not covered by clothing.

The Samaria Gorge is the acknowledged natural site and symbol of the island of Crete. It holds a unique and distinguished position in Cretan, Greek and Mediterranean history, as a place that has served throughout history as an ark for life and a haven of freedom (UNESCO World Heritage site). The path of the Samaria Gorge from the north to the south entrance is 13 km long. Visitors set out from Xyloskalo, on the edge of the Omalos Plateau, cross the Cretan countryside vertically, and end up at the village of Agia Roumeli on the Libyan Sea.

The importance of the Lefka Ori to the development and preservation of local biodiversity, and the significance of this biodiversity for Greece and indeed globally, is internationally recognised. Many rare and important animal and plant species are found in the Lefka Ori, due to the unique and specific natural and geological characteristics of the region. The Gorge of Samaria was declared a National Park in 1962, and is open to the public from May to October each year.

17:00 *BUS taking participants to bus stops 1 and 2*

MAP







July 18 (Thursday), 2024		Day 3
8:20 (1)	<i>BUS picking participants from bus stops 1 and 2</i>	
8:30 (2)		
8:30	<i>Registration</i>	
	<b>1) LCLUC Projects in MedRIN/SCERIN - potential for collaborations</b> (15 min each, <i>Session Chair: Garik Gutman, Minutes: Petya Campbell</i> )	
9:00	Urban extreme heat monitoring from high resolution thermal infrared imagery ( <i>Glynn Hulley, NASA JPL, USA</i> )	
9:20	Agricultural Landscape Dynamics in Post-Socialist Romania: Diachronic Hotspot Analysis 2002-2024 ( <i>Geoff Henebry, Michigan State University, MI, USA</i> )	
9:40	Water scarcity and agricultural land use change in the Serbian Danube ( <i>Sean Wozniicki, Grand Valley State University, MI, USA</i> )	
10:00	Examining drinking water vulnerability from increased frequency and intensity of wildland fires ( <i>John Iames, EPA, Durham, NC, USA</i> )	
10:20	MODIS to VIIRS continuity of the NASA fire products ( <i>Luigi Boschetti, University of Idaho, USA</i> )	
10:30	<i>Q &amp; A; Discussion: LCLUC Projects and GOF-GOLD Partnerships (Chair: Garik Gutman, Minutes: Petya Campbell)</i>	
11:05	<i>Coffee Break</i>	
11:15	<b>2) Projects Assessing the Effects from Armed Conflicts</b> (10 min each, <i>Session Chair: Serhii Skakun, Minutes: Vince Ambrosia</i> )	
	<b>Focus Ukraine</b>	
11:15	Assessment of war-induced land use change in Ukraine with satellite data and machine learning ( <i>Natalia Kussul, U. Maryland, USA</i> )	
11:25	Innovative Approaches to Monitoring Forest Changes in the Ukrainian Carpathians Using Satellite Data and AI ( <i>Oleh Chaskovskyy, Ukrainian National Forestry U.</i> )	
11:35	Detecting unexploded ordnance along the frontlines of the war in Ukraine ( <i>Erik Duncan, U. Maryland</i> )	
11:45	Ukrainian wheat production dynamic as part of the European winter cropland expansion trend in the 21st century ( <i>Leonid Shumilo, U. Maryland</i> )	
11:55	Harmonizing Ukraine's Land Management with Europe: The LPIS Pilot Project ( <i>Andrii Shelestov, Kyiv Polytechnic Institute</i> )	
	<b>Focus Middle East</b>	
12:05	Impacts of armed conflicts on agricultural land use in the eastern Mediterranean region, focuss on Syria and Turkey ( <i>He Yin, Kent State U., USA</i> )	
12:15	<i>Q &amp; A; Discussion, Projects and Partnerships (Session Chair: Serhii Skakun, Minutes: Vince Ambrosia)</i>	
12:35	<b>3) Projects with Multi-national Collaboration</b> ( <i>Session Chair: Ioannis Gitas, Minutes: Chariton Kalaitzidis</i> )	
12:45	The Carbonica excellence hub and its role in creating sustainable living labs in the Mediterranean region ( <i>George Zalidis, i-BEC</i> )	
12:55	The Excelsior H2020 Teaming Project ( <i>Diufantos Hadjimitsis, Cyprus University of Technology / ERATOSTHENEIS Centre of Excellence ECoE</i> )	
13:05	4Growth ( <i>Ioannis Gitas, Aristotle University of Thessaloniki</i> )	
13:15	<i>Q &amp; A; Discussion, Projects and Partnerships (Chair: Serhii Skakun, Minutes: Vince Ambrosia)</i>	
13:30	<i>Working Lunch</i>	
14:30	<b>4) SCERIN RS Hot-topics by Country</b> (flash talks by country, 5 min. each. <i>Session Chair: Jana Albrechtova, Minutes: Petya Campbell</i> )	
	<i>Bosnia &amp; Herzegovina, Bulgaria, Croatia, Czech Republic, Hungary, Kosovo, Poland, Romania, Serbia, Slovakia, Slovenia, Ukraine, CERTH for Greece and examples of multinational collaborations</i>	
15:30	<i>Discussion: SCERIN countries hot topics (Chair: Petya Campbell, Minutes: Jana Albrechtova)</i>	
16:00	<i>Coffee Break</i>	
16:30	<b>5) MedRIN RS Hot-topics by Country</b> (flash talks by country, 3 min. each. <i>Session Chair: Florian Schwandner, Minutes: Vince Ambrosia</i> )	
	<i>Cyprus*, Greece, Italy, Lebanon, Turkey, and examples of multinational collaborations (*Cyprus Hot topics will be presented by D. Hadjimitsis at 13.05)</i>	
17:00	<i>Discussion: MedRIN hot topics (Chair: Vince Ambrosia, Minutes: Florian Schwandner)</i>	
	<b>6) Drought, Fires and Environmental Crimes</b> (10 min each; <i>Session Chair: Ioannis Gitas, Minutes: Jana Albrechtova</i> )	
17:30	Remote Sensing of wildfires in the North Africa and Middle East ( <i>George Mitri, University of Balamand, Lebanon</i> )	
17:40	Examples of environmental crimes visible in satellite data ( <i>Stanislaw Lewinski, Space Research Centre of Polish Academy of Sciences, Poland</i> )	
17:50	Drought and fire risk mapping, LULC change monitoring for sustainable ecosystem management in Serbia, Cirocco HE Project ( <i>Minuđer Mesaroš, U. Novi Sad, Serbia</i> )	
18:00	Comparing performance of machine learning algorithms in modelling forest characteristics in Carpathian Mountains using remote sensing data ( <i>Mihai Nița, U. Brașov, Romania</i> )	
18:15	<i>Discussion: SCERIN and MedRIN collaborations (Session Chair: Chris Justice, Minutes: Petya Campbell)</i>	
18:30	Objectives for Day 4, Closing of the day	
18:45	<i>Adjourn</i>	
19:00	<b>GALA dinner - traditional Cretan music and dance</b>	
22:00	<i>BUS taking participants to bus stops 1 and 2</i>	

55

30





July 19 (Friday), 2024      Day 4	
8:20 (1) 8:30 (2)	<i>BUS picking participants from bus stops 1 and 2</i>
9:00	<b>1) RS Experts (10 min talks; Session Chair: Sean Woznicki, Minutes: Petya Campbell)</b>
	<i>Forests</i>
9:00	Municipal solid waste landfill: landscape ecological problem and potential for future ( <i>Olga Brovkina, CzechGlobe, Czech Republic</i> )
9:10	Integrating Annual Sentinel-1/2 Time Series and National Forest Inventory Data for Machine Learning-Based Tree Species Classification at a National Scale ( <i>Ana Potocnik-Buhvald, Slovenia</i> )
9:20	Remote sensing based sustainable forest management in Vojvodina Province, Serbia ( <i>Bojan Tubić, JP Vojvodinašume, Serbia</i> )
9:30	Operational canopy height estimation via spaceborne images with uncertainty quantification ( <i>Ioannis Manakos, Centre for Research and Technology Hellas</i> )
9:50	How old are our grasslands: Determining the age of grassland using time series from Sentinel-2 and Landsat-5/8 imagery ( <i>Tatjana Veljanovski, Research Centre of the Slovenian Academy of Sciences and Arts, Slovenia</i> )
10:00	Multisource remote sensing in water management analysis to support natural flooding and the transformation effect of the floodplain ( <i>Frantisek Zemek, CzechGlobe, Czech Republic</i> )
10:10	<i>Q &amp; A for Expert talks (Chair: Sean Woznicki, Minutes: Petya Campbell)</i>
10:30	<i>Coffee Break</i>
	<b>2) Observers and Other GOF-C-GOLD Networks (Session Chair: Chris Justice, Minutes: Petya Campbell)</b>
11:00	National and field scale soil property mapping to support sustainable land management in Azerbaijan ( <i>Elton Mammadov, Ministry of Agriculture, Azerbaijan</i> )
11:20	Earth observation activities at the Algerian Space Agency ( <i>Moussa Sofiane Karoui, Algerian Space Agency, Algeria</i> )
11:45	Remote Sensing Priorities in Georgia ( <i>Giorgi Ghambashidze, Scientific-Research Centre of Agriculture, Georgia</i> )
11:55	GOF-C-GOLD CARIN ( <i>Geoff Henebry, Michigan State University, MI, USA</i> )
12:15	<i>Discussion: Q and A (Chair: Chris Justice, Minutes: Florian Schwandner)</i>
	<b>3) Research Highlights from the MedRIN/SCERIN Regions (10 min talks; Session Chair: Vince Ambrosia, Minutes: Petya Campbell)</b>
12:30	NASA and ESA strategies of Earth Science to Action ( <i>F. Schwandner, NASA, USA</i> )
12:40	Greece and the ARTEMIS Accords ( <i>F. Schwandner, NASA, USA</i> )
12:50	Application of GeoAI in water monitoring ( <i>Gordana Jakovljenic, U. Banja Luka, Bosnia and Herzegovina</i> )
13:00	<i>Discussion: Q and A (Chair: Vince Ambrosia, Petya Campbell, Minutes: Petya Campbell)</i>
13:30	<i>Working Lunch</i>
14:30	Rapid presentations of posters (3 min talks, list follows; Session Chair: <i>Olga Brovkina, Minutes: Chariton Kalaitzidis</i> )
15:30	MedRIN reporting (tasks and follow-up activities), Future venues ( <i>Florian Schwandner, Vince Ambrosia</i> )
15:40	SCERIN reporting (tasks and follow-up activities, <i>P. Campbell, J. Albrechtova and O. Brovkina</i> ), Future venues ( <i>Bulgaria - Rumiana Vatsava and Lachezar Filichev</i> )
15:50	<i>Coffee Break</i>
16:00	<i>Discussion: MedRIN and SCERIN follow-up activities, Q and A (Chair: Garik Gutman, Minutes: Florian Schwandner)</i>
17:00	Closing of the day and workshop ( <i>Program leads, Hosts, RIN coordinators</i> )
TBD	<i>BUS taking participants to bus stops 1 and 2</i>

First name	Last name	Affiliation	Country	E-mail
Mohamed	Loucif Sciad	Ministry of Higher Education and Scientific Research	Algeria	<i>M.Loucif@dgrsd.dz</i>
Moussa Sofiane	Karoui	Algerian Space Agency (ASAL)	Algeria	<i>sofiane.karoui@irap.omp.eu</i>
Elton	Mammadov	Ministry of Agriculture	Azerbaijan	<i>elton.eldaroglu@gmail.com</i>
Gordana	Jakovljevic	Faculty of Architecture, Civil Engineering and Geodesy, University of Banja Luka	Bosnia and Herzegovina	<i>gordana.jakovljevic@aggf.unibl.org</i>
Lachezar	Filchev	Space Research and Technology Institute at the Bulgarian Academy of Sciences, SRTI-BAS	Bulgaria	<i>lachezarlf@gmail.com</i>
Rumiana	Vatseva	Bulgarian Academy of Sciences, Geological Institute	Bulgaria	<i>rvatseva@gmail.com</i>
Andreas	Christofe	ERATOSTHENES Centre of Excellence	Cyprus	<i>andreas.christofe@eratosthenes.org.cy</i>
Diofantos	Hadjimitsis	Cyprus University of Technology/Eratosthenes CoE	Cyprus	<i>diofantosb@gmail.com</i>
Frantisek	Zemek	Global Change Research Institute CAS (CzechGlobe)	Czechia	<i>zemek.f@czechglobe.cz</i>
Jana	Albrechtová	SCERIN, Charles University, Faculty of Science; Czechglobe (Global Change Research Institute of Czech Academy of Sciences)	Czechia	<i>albrecht@natur.cuni.cz</i>
Miroslav	Pikl	Global Change Research Institute CAS (CzechGlobe)	Czechia	<i>pikl.m@czechglobe.cz</i>
Olga	Brovkina	SCERIN, Global Change Research Institute CAS (CzechGlobe)	Czechia	<i>brovkina.o@czechglobe.cz</i>
Giorgi	Ghambashidze	Scientific-Research Centre of Agriculture	Georgia	<i>g.ghambashidze@gmail.com</i>
Sophiko	Kenkebashvili	Scientific-Research Centre of Agriculture	Georgia	<i>sophika.kenkebashvili@gmail.com</i>
<b>Chariton</b>	<b>Kalaizidis</b>	<b>CIHEAM-MAICH - HOSTS</b>	<b>Greece</b>	<b><i>chariton@maich.gr</i></b>
Dimitrios	Alexakis	Foundation for Research and Technology Hellas, Institute for Mediterranean Studies	Greece	<i>dalexakis@ims.forth.gr</i>
Dimitrios	Stavrakoudis	Aristotle University of Thessaloniki	Greece	<i>jstavrak@for.auth.gr</i>
Dimitris	Tsirantonakis	Foundation of Research and Technology Hellas	Greece	<i>dsirantonakis@iacm.forth.gr</i>
George	Zalidis	Aristotle University of Thessaloniki	Greece	<i>zalidisg@gmail.com</i>
Ioannis	Manakos	Centre for Research and Technology Hellas - CERTH (SCERIN & MedRIN)	Greece	<i>imanakos@iti.gr</i>
Ioannis	Gitas	MedRIN, Aristotle University of Thessaloniki	Greece	<i>igitas@for.auth.gr</i>
Konstantinos	Karyotis	Auth	Greece	<i>kbkaryotis@auth.gr</i>
Maria	Giortsou	Interbalkan Environment Center	Greece	<i>mgjortson@yaboo.gr</i>
Nektarios	Chrysoulakis	FORTH	Greece	<i>zedd2@iacm.forth.gr</i>
Paraskevi	Nomikou	National and Kapodistrian University of Athens	Greece	<i>evinom@geol.uoa.gr</i>
Rizos-Theodoros	Chadoulis	Centre for Research & Technology, Hellas (SCERIN & MedRIN)	Greece	<i>chadoulis@iti.gr</i>
Vasiliki (Betty)	Charalampopoulou	GEOSYSTEMS HELLAS S.A.	Greece	<i>b.charalampopoulou@geosystems-hellas.gr</i>
Levente	Ronczyk	DATelite	Hungary	<i>datelite@datelite.hu</i>
Rosa	Lasaponara	CNR	Italy	<i>ROS.A.lasaponara@cnr.it</i>
Festina	Sadiku	University of Prishtina-Faculty of civil engineering	Kosovo	<i>festinasadiku1@gmail.com</i>
George	Mitri	University of Balamand	Lebanon	<i>george.mitri@balamand.edu.lb</i>
Stanislaw	Lewiński	Space Research Centre of the Polish Academy of Sciences CBK PAN	Poland	<i>stlewnski@cbk.paw.pl</i>
Dan	Savastru	National Institute of R&D for Optoelectronics INOE 2000	Romania	<i>dsavasu@inoe.ro</i>
Florea	Sergiu-Constantin	Transilvania University of Brasov	Romania	<i>sergiu.florea@unitbv.ro</i>
Maria	Zoran	National Institute of Research & Development for Optoelectronics for Optoelectronics INOE 2000	Romania	<i>mzoran@inoe.ro</i>
Mihai Daniel	Nita	Transilvania University of Brasov	Romania	<i>nita.mihai.daniel@gmail.com</i>
Bojan	Tubić	PE "Vojvodinašume"	Serbia	<i>btubic@vojvodinasume.rs</i>
Marko	Marinković	PE "Vojvodinašume"	Serbia	<i>marko.marinkovic@vojvodinasume.rs</i>
Minučer	Mesaroš	University of Novi Sad, Faculty of Sciences	Serbia	<i>minucher@gmail.com</i>
Mirjana	Radulović	BioSense Institute	Serbia	<i>mirjana.radulovic@biosense.rs</i>
Miro	Govedarica	University of Novi Sad, Faculty of Technical Sciences	Serbia	<i>miro@uns.ac.rs</i>
Ivan	Sačkov	National Forest Centre	Slovakia	<i>sackor@nlcsk.org</i>
Tomáš	Rusňák	ILE SAS	Slovakia	<i>tomas.rusnak@sarba.sk</i>
Ana	Potočnik Buhvald	University of Ljubljana	Slovenia	<i>ana.potocnik-buhvald@fgg.uni-lj.si</i>
Tatjana	Veljanovski	ZRC SAZU - Research Centre of the Slovenian Academy of Sciences and Arts	Slovenia	<i>tatjana.veljanovski@zrc-sazu.si</i>
Levent	GENÇ	MedRIN- Çanakkale Onsekiz Mart University Turkey	Türkiye	<i>leventgc@gmail.com</i>
Andrii	Shelestov	NTUU KPI	Ukraine	<i>andrii.shelestov@gmail.com</i>
Maryna	Ladyka	Nation University of Life and Environmental Sciences of Ukraine	Ukraine	<i>mm.ladyka@gmail.com</i>
Oleh	Chaskovskyy	Ukrainian National Forestry University	Ukraine	<i>oleh.chaskov@nltu.edu.ua</i>
Chris	Justice	GOFC GOLD Chair	USA	<i>cjustice@UMD.EDU</i>
Erik	Duncan	University of Maryland College Park	USA	<i>ecduncan@umd.edu</i>
Florian	Schwandner	NASA Ames	USA	<i>florian.m.schwandner@nasa.gov</i>
Garik	Gutman	NASA HQ	USA	<i>ggutman@nasa.gov</i>
Geoff	Henebry	SCERIN & CARIN, Michigan State University	USA	<i>henebryg@msu.edu</i>
Glynn	Hulley	NASA Jet Propulsion Laboratory	USA	<i>ghynn.hulley@jpl.nasa.gov</i>
He	Yin	Kent State University	USA	<i>hyin3@kent.edu</i>
John	Iames	US Environmental Protection Agency	USA	<i>john.iames@gmail.com</i>
Molly	Sears	Michigan State University	USA	<i>searsmo1@msu.edu</i>

Mutlu	Ozdogan	UW-Madison	USA	<i>ozdogan@wisc.edu</i>
Nataliia	Kussul	UMD	USA	<i>kussul@umd.edu</i>
Sean	Woznicki	SCERIN, Grand Valley State University	USA	<i>woznice@gvsu.edu</i>
Sergii	Skakun	University of Maryland	USA	<i>skakun@umd.edu</i>
Tao	Liu	Michigan Technological University	USA	<i>taoliu@mtu.edu</i>
Vincent	Ambrosia	MedRIN, NASA-Ames / CSUMB	USA	<i>V.G.AMBROSIA@GMAIL.COM</i>
Petya	Campbell	SCERIN, UMBC and GSFC	USA/Bulgaria	<i>petya@umbc.edu</i>
Monika	Tomaszewska	Michigan State University	USA/Poland	<i>monikat@msu.edu</i>



	<b>Name</b>	<b>Association</b>	<b>Email</b>
	Antonios Mouratidis	AUTH, GR	amourati@geo.auth.gr
	<b>Chariton Kalaitzidis, main host</b>	<b>MAICH, GR - HOSTS</b>	<b>chariton@maich.gr</b>
	Diofantos Hadjimitsis	CUT & Erasthenes CoE, CY	d.hadjimitsis@erasthenes.org.cy
	Florian Schwandner	NASA Ames	florian.m.schwandner@nasa.gov
	Francesco Sarti	ESA, IT	Francesco.Sarti@esa.int
	Garik Gutman	NASA, HQ	ggutman@nasa.gov
	Ioannis Gitas	AUTH, GR	igitas@for.auth.gr
	Jana Albrechtová	CUNI & CZECHGLOBE, CZ	albrecht@natur.cuni.cz
	Levente Ronczik	University of Pecs, HU	ronczyk@gmail.com
	Lucie Kupkova	CUNI, CZ	lucie.kupova@gmail.com
	Olga Brovkina	CZECHGLOBE, CZ	brovkina.o@czechglobe.cz
	Petya Campbell	UMBC and NASA/GSFC, USA	petya@umbc.edu
	Vincent Ambrosia	NASA Ames & CSUMB	vambrosia@csumb.edu vgambrosia@gmail.com



Confirmed	Presenter	Title		Contact						
X	Diofantos group	Cyprus: Country update	Country update							The 'country hottopics' are on Day 3 in the afternoon, so the folders are here: <a href="https://drive.google.com/drive/folders/1fXw-VFhNLcRkEK50V6YpZw18HK2Egn8?usp=sharing">https://drive.google.com/drive/folders/1fXw-VFhNLcRkEK50V6YpZw18HK2Egn8?usp=sharing</a>
	Chariton / Manakos	Greece: Country update	Country update	Ioannis						
X	Rosa Lasaponara	Italy: Country update	Country update	Vincent						
X	George Mitri	Lebanon: Country update	Country update	Ioannis						
X	Levent	Turkey: Country update	Country update	Vincent/Florian						
X	Festina Sadiku	Kosovo: Country update	Country update	Florian						