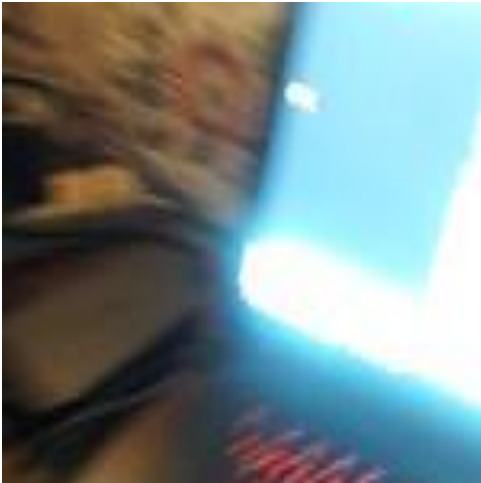




"Book of Hours, Boar digging grave, from a marginal cycle of images of the funeral of Renard the Fox, Walters Manuscript W.102, fol. 80v detail" by Walters Art Museum Illuminated Manuscripts is marked with [CC0 1.0](#)

Documentation Interest Group

Success Counts on You!



["Is it possible to zoom in? Office laptop, light, screen, power cord, adaptor, red back lit key board, silk wall hanging, Lakota Lhamo Ling, Washington, USA"](#) by [Wonderlane](#) is marked with [CC0 1.0](#)

"Incorrect documentation is often worse than no documentation."

Bertrand Meyer

What in the World is DIG?

Documentation Interest Group!



<https://wiki.evergreen-ils.org/doku.php?id=evergreen-docs:dig>

Monthly Meetings:

- 1st Thursday of odd months at 2 p.m. ET on IRC (Business)
- 1st Thursday of even months at 2 p.m. ET on Zoom (Collaboration)

Hackfest on Friday! Documentation session open 8 a.m. - 8 p.m. ET

Documentation Discussion List: [evergreen-documentation \[at\] @list \[dot\] evergreen-ils \[dot\] org](mailto:evergreen-documentation@list.evergreen-ils.org)

State of Current Documentation

In the last year:

- 434 Commits with 27 Unique Committers
- Officially moved documentation to Antora (<https://docs.evergreen-ils.org/eg/docs/latest/index.html>)
- Documentation server moved
- 3.5 and 3.6 documentation, worked on (then) experimental catalog documentation and started on 3.7
- Documentation videos submitted to community YouTube channel
- DIG Wiki updated with new style guide, Antora information

But there is still a lot to do!!



"Project 365 #110: 200413 Digging The Dirt" by [comedy_nose](#)
is marked with [CC PDM 1.0](#)

What is there to do?

Keep the docs current with new Releases

Edit current documentation

Report problems on Launchpad

Fill in never-documented features

Submit documentation-related videos

Use link on every page of the official docs:

To report a problem with this documentation or provide feedback, please contact the [DIG mailing list](#).



["Digging Deep"](#) by [Free Range Photos](#) is marked with [CC PDM 1.0](#)

How you can help?

Submit documentation to the Documentation Discussion List

- Submit in any format and we'll convert it to the asciidoc format!

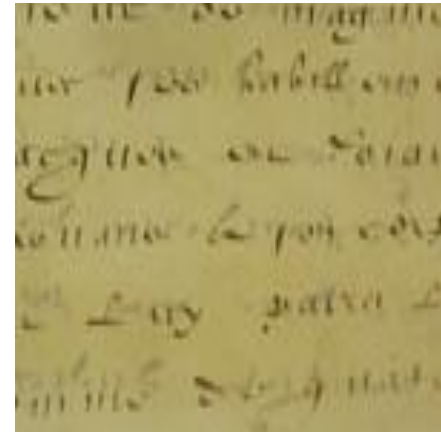
Submit documentation in Github

- Review Lynn and Blake's Pre-Conference and Jane's Conference Sessions to learn how!

Participate in DIG Meetings

Add/Assign yourself topics from the "Documentation Needs" list:

(https://wiki.evergreen-ils.org/doku.php?id=evergreen-docs:documentation_needs)



Thanks to all the Developers for
the Release Notes
and all the Documenters out
there!!

We DIG you!



"c.2002. Wooden rack built by Mike McWilliams holding power boards and laptop computers components of the first Digital Aerial Sketch Mapping (DASM) system used in Region 6 functionally. Two systems allow two aerial observers to digitize simultaneously." by USDA Forest Service is marked with CC PDM 1.0