

# Rubin/LSST France meeting

# Lightning talks

---

Spring 2023 – LPSC, Grenoble



# Instructions

- Copy the template slide #3
- Fill in your name, position and institution (and picture if you want)
- Add content about your research for about 1 minute
  - It's totally OK to present your research project if you don't have results yet!
  - We recommend one or two plots with take-away messages and potentially a couple of references/links. Just don't try to pack too much into one slide :)
  - For examples, see the [slides](#) from the 2022 summer meeting
- For junior members of DESC, have a look at JuDO (**J**unior **D**ESC **O**rganization) and the #desc-judo channel on the LSSTC slack.

# Your name

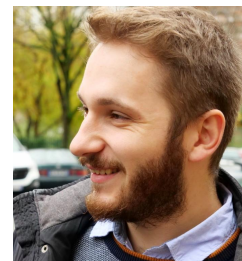
## Your position and affiliation

- My research projects are...
- My research interests are...



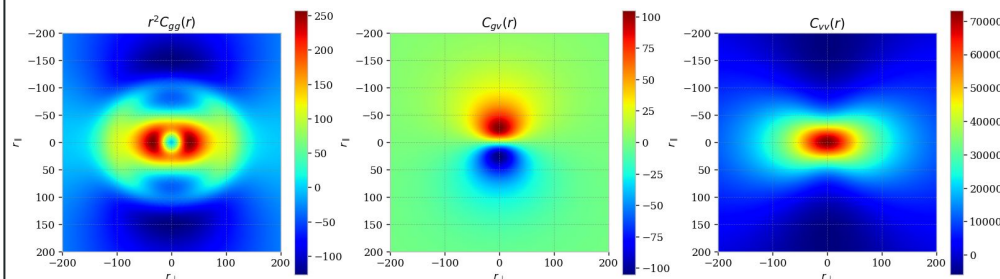
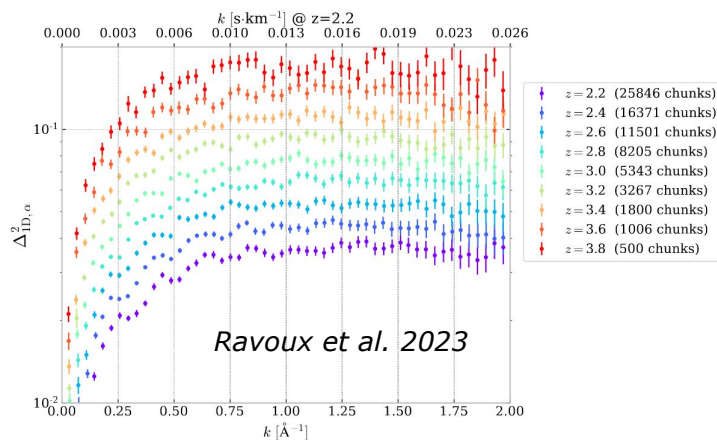
# Corentin Ravoux

LPC Clermont



## Lyman-alpha forest (DESI):

- Measurement of the one-dimensional power spectrum
- 3D tomographic mapping
- Hydrodynamical simulations



## Supernovae:

- Growth rate measurement with peculiar velocities
- Rubin SNIa host redshift with DESI and DESI-II

# Juan Mena-Fernández

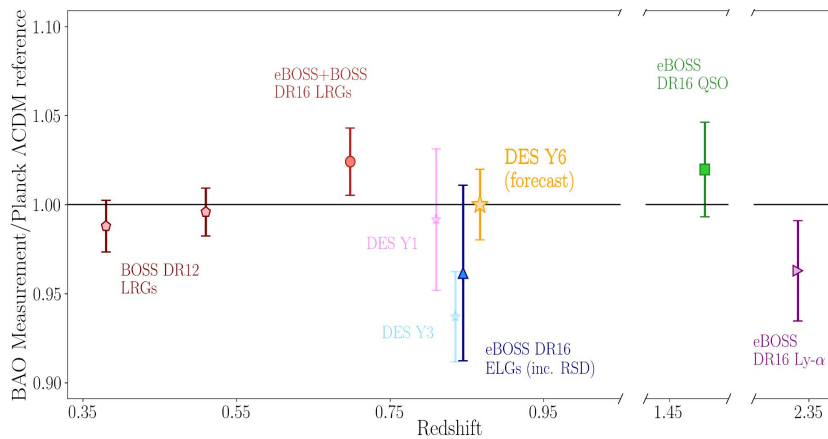
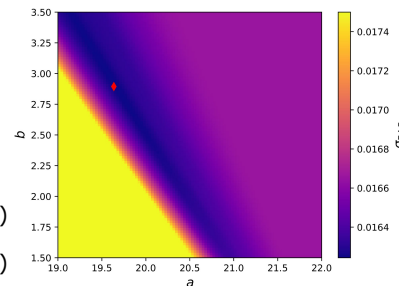
Postdoc @ LPSC

[juan.menafernandez@lpsc.in2p3.fr](mailto:juan.menafernandez@lpsc.in2p3.fr)



## Ongoing projects within DES:

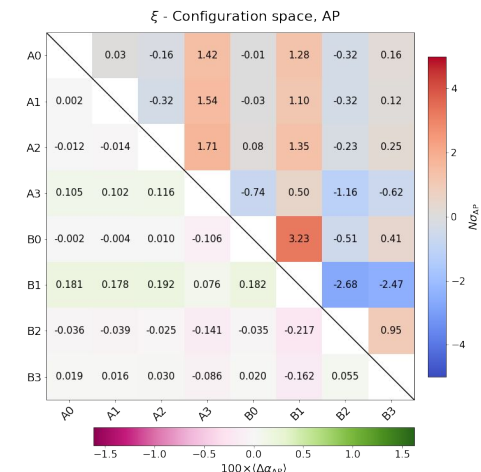
- DES Y6 BAO analysis:
  - optimization of the BAO sample
  - development of the pipeline to fit  $w(\theta)$
  - combination of estimators (ACF, APS, PCF)



Measurement already unblinded (within DES) and papers coming out soon!

## Ongoing projects within DESI:

- Co-lead of the HOD systematics analysis team



- Development and testing of the blinding pipeline for the Y1 analysis

# Andrea JEREMIE

Research Engineer (PhD) @ LAPP (Annecy)



## System Integration, Test and Commissioning SITCOM

- M1M3 position repeatability after a slew
- Contributions to M1M3 Glass safety pre-review



Experience: Technical coordination, instrumentation, detector construction and commissioning

# Chloé Barjou-Delayre

First year PhD student at LPC

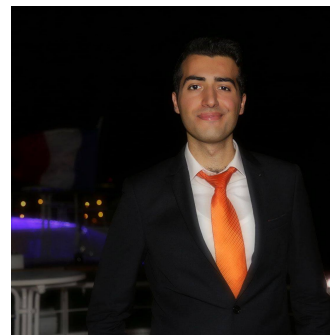


- ZTF group :
  - Observe the impact with synthetics filter on light curves
  - Studie anisotropie of universe with ZTF

# Wassim KABALAN

## First year PhD student at APC

with Alexandre Boucaud and Josquin Errard



*"Accelerating Bayesian inference for cosmological pipelines"*

- Working between Simons Observatory (CMB B-Mode analysis) and Rubin LSST DESC (Weak Lensing)
- Used to be (4 years) CATIA/Solidworks developer (mainly accelerated and parallel programming)