

# Critical Conversation on Generative AI

Amie Vedral-Cohen, PhD [amie.cohen@stonybrook.edu](mailto:amie.cohen@stonybrook.edu)

Luis Colón, [luis.colon@stonybrook.edu](mailto:luis.colon@stonybrook.edu)

Rose Tirotta-Esposito, [rose.tirotta-esposito@stonybrook.edu](mailto:rose.tirotta-esposito@stonybrook.edu)

Yiren Kong, [yiren.kong@stonybrook.edu](mailto:yiren.kong@stonybrook.edu)

Jenny Zhang, [yi.zhang.13@stonybrook.edu](mailto:yi.zhang.13@stonybrook.edu)

**Stony Brook University**

# Session Agenda

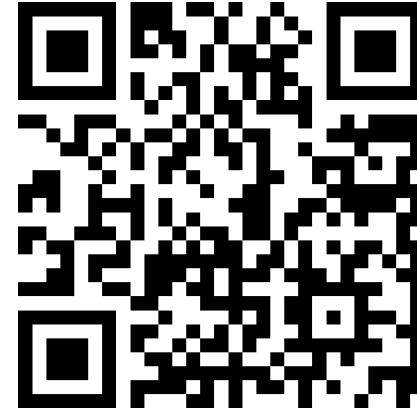
- 1** Introductions
- 2** Our Story
- 3** Moderated AI Discussion

# Word Cloud

Scan the QR code or follow the link on this slide to access our Slideo.

**How have you used or plan to use AI in your own work?**

You can submit more than one response on this Word Cloud!



<https://app.sli.do/event/7yomfiX8dXAL3i2EMf37Lp>

# The Team



**Rose Tirotta-Esposito, EdD**

Director



**Amie Vedral Cohen, PhD**

Assistant Director of Faculty  
Development - Testing  
Assessment, & Evaluation



**Yiren Kong, PhD**

Educational Research & Grant  
Development Specialist



**Luis Colón**

Instructional Designer



**Jenny Zhang**

Senior Instructional  
Designer



# Our Story



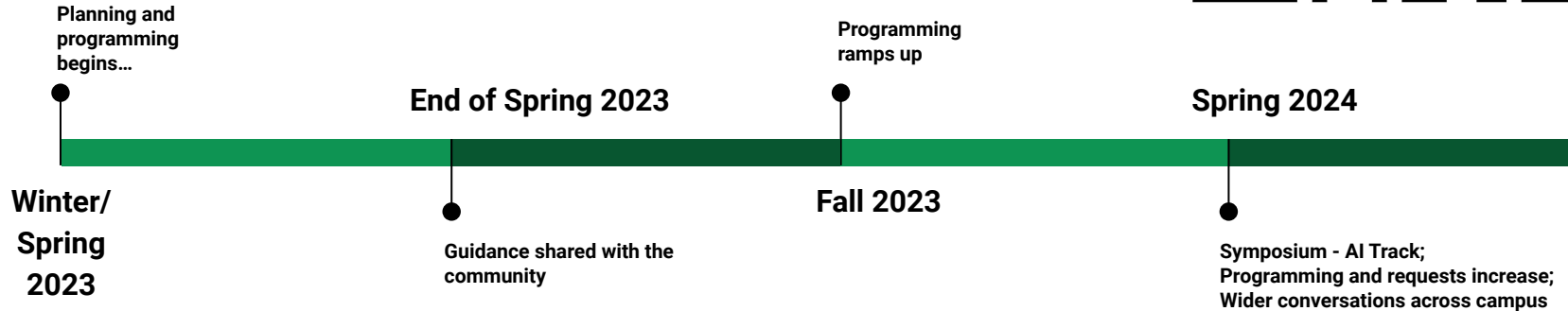
# December 22, 2022





# Timeline

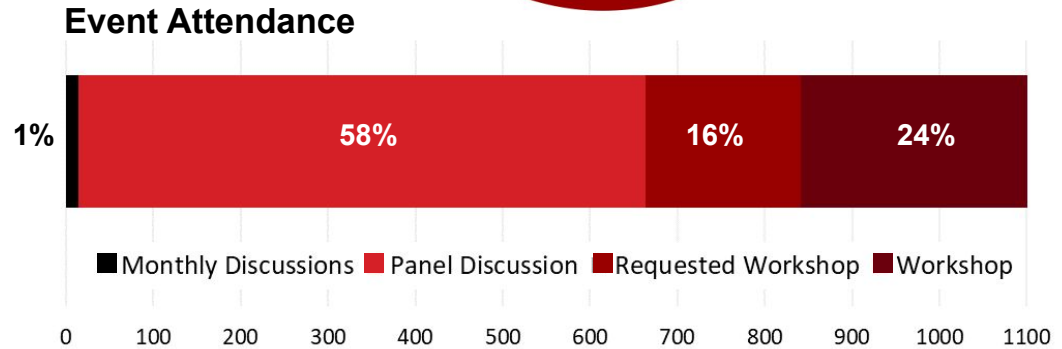
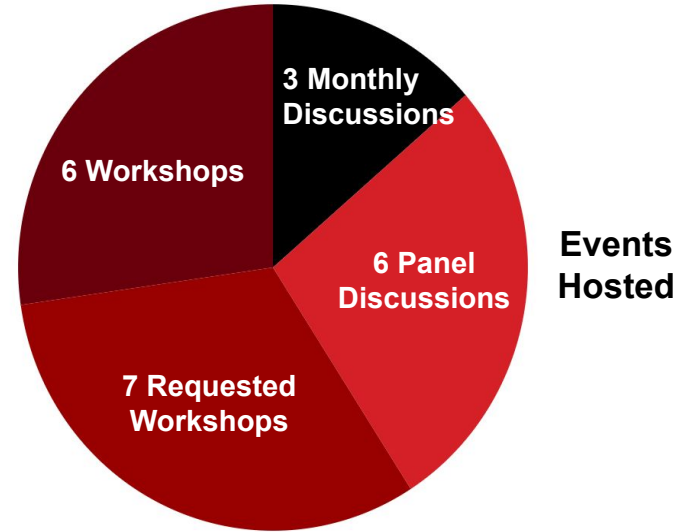
[Access Our Full Interactive Timeline](#)



# By the Numbers\*

**22** AI-Focused Events  
with **1,110** Attendees

**749** SBU attendees  
and **81** attendees from  
**12** other **SUNY** schools







# Facilitated Discussion on AI



# Question # 1

**What are your greatest concerns about how AI will impact teaching and learning on your campus?**



## Question # 2

**How have you addressed issues that AI has brought to your campus? What other resources do you need?**



# Question # 3

**How can we raise the level of awareness about ethical issues and biases relating to the use of Generative AI?**



## Question # 4

**How do we get faculty to “buy into” using AI in their teaching?**



## Question # 5

**How is your campus educating students about AI? Do you have guidelines for students?**





# Additional Resources



# Takeaways

- [SBU: Generative AI Resources page](#)

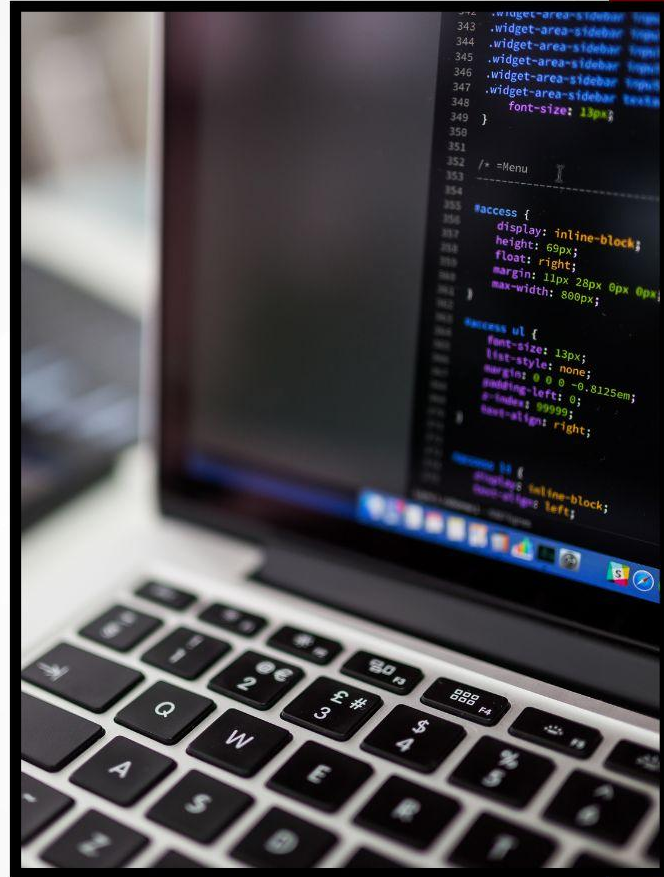


# EXIT CARD

---

What will be your  
next steps?

What will we be  
talking about next  
year at CIT?





# Thank you!

<http://celt.stonybrook.edu>  
[celt@stonybrook.edu](mailto:celt@stonybrook.edu)