

Historical Fiction Presentation

by Trina Naclerio

Bud, Not Buddy

by Christopher Paul Curtis

Delacorte Press Publishing 1999

Why is this historical fiction?

Setting: Flint and Grand Rapids, Michigan (real places)

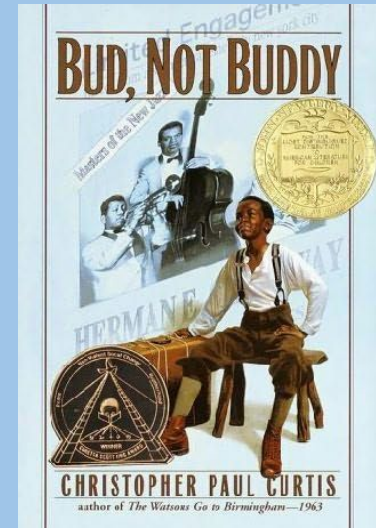
1930's time period (Great Depression era)

Characters are fictional but are based on real people

Plot reflects real issues of the time -

homelessness/racism

Click for
reader's
theatre

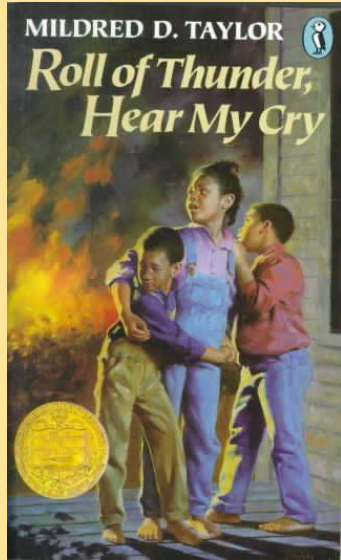


- *2000 Newbery Medal Winner
- *Coretta Scott King Award

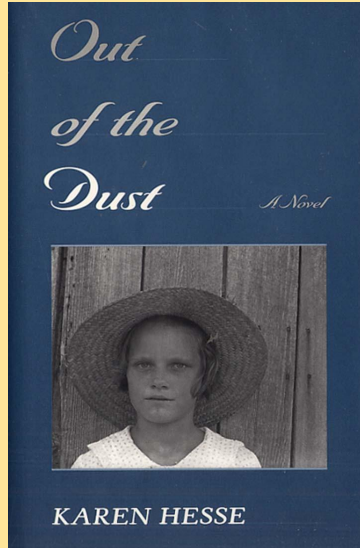


Herman E. Curtis and
the Dusky Devastators

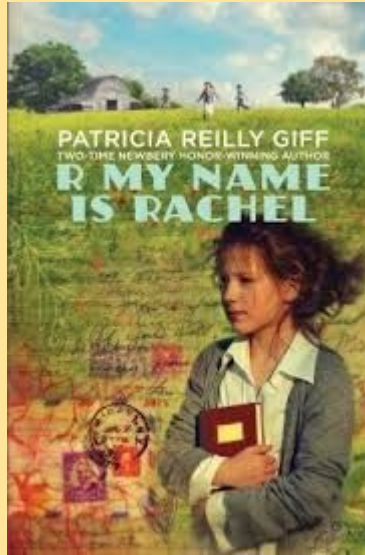
Literature Circles: Great Depression Era



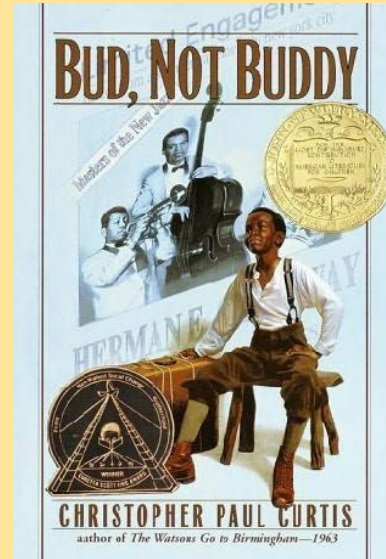
Mississippi



Oklahoma



North Lake
Near Canada



Michigan



Kansas

Students can compare setting descriptions and discuss which have the best sensory details.

Home at Last

You grew up fast when mama died
Flint was not where you belonged,
Putting together the clues to find your place
With your dad is where you longed,

Suitcase in hand was all that you needed
You knew when to say enough was enough,
Just remember your rules and you'll get through
You trudged on when the going got tough,

Looking for food and people so unkind
Not caring about what's best for you,
But inside you knew where you should go
With your dad was what you should do,

When one door closed another one opened
You found your family at last,
No need to cry, don't shed no tear
The past is just the past.

**Finding your home feels so good,
Home at last, Home at last**

Students could be offered choices of authentic assessments to show understanding of their historical fiction book..



Create a song

Teaching Idea: Compare Perceptions of a Historic Event

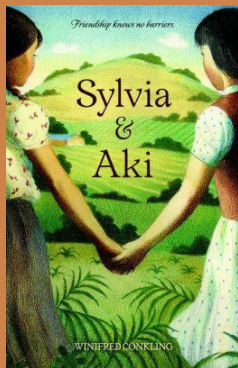
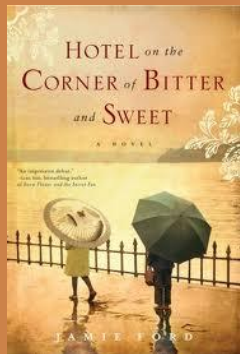
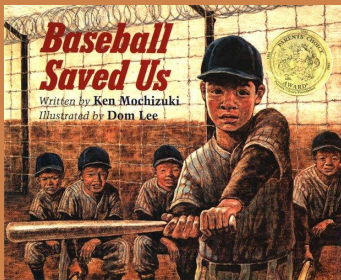
Japanese Internment Camps

Use primary sources

Executive Order 9066

Use actual footage and personal accounts

Use historical fiction text



Japanese viewpoint

[U.S. Government Viewpoint](#)

Consider the perspective

Who is telling the story?

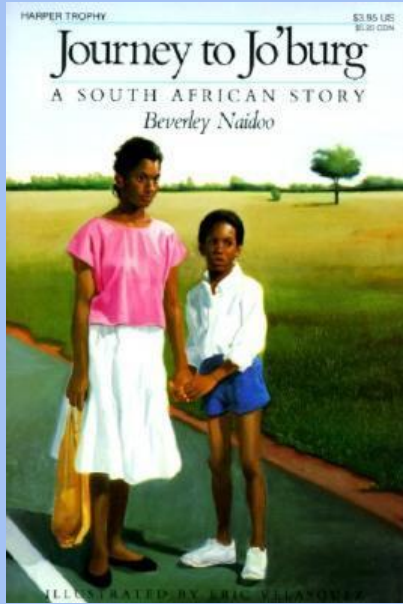
What is the narrator's perspective of the event?

What factors influence the perspective?

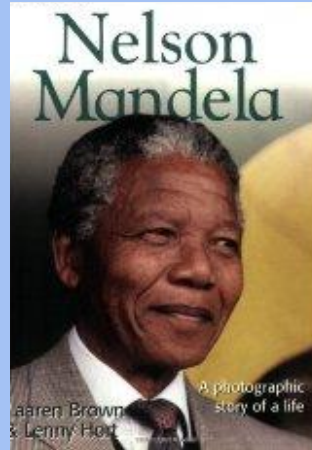
How do the perspective's differ?

Apartheid in South Africa

Theme: The Rights of Respect and Freedom



Historical fiction

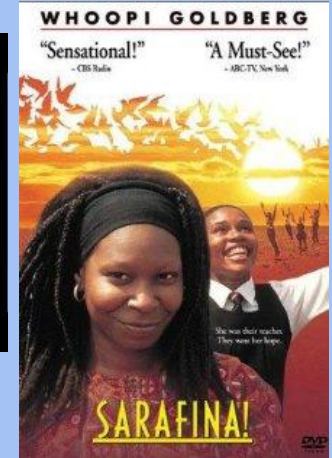


Biography

Movie: The Color of Friendship (Disney)



Movie: Sarafina



DBQ: Document-Based Questions

Use technology with historical fiction

Click on the poster



Immigration

[Book Summary - Click Here](#)

