

Hidden Gearshift Lock



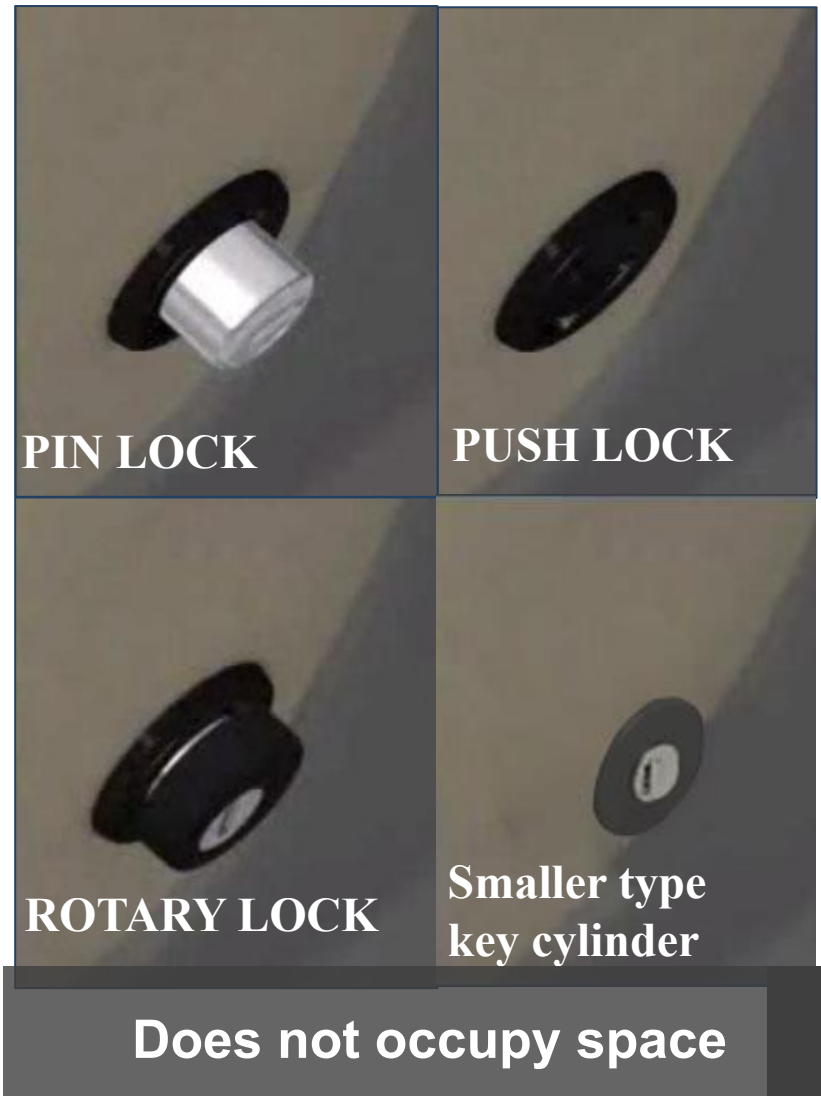
Mechanical anti-theft lock

No interference in the circuits and oil passages

Product Types

There are 4 kinds of Lock

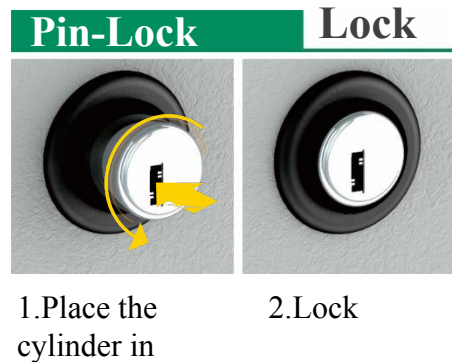
- PIN Lock
- PUSH Lock
- ROTARY Lock
- Smaller type key cylinder



Product Types

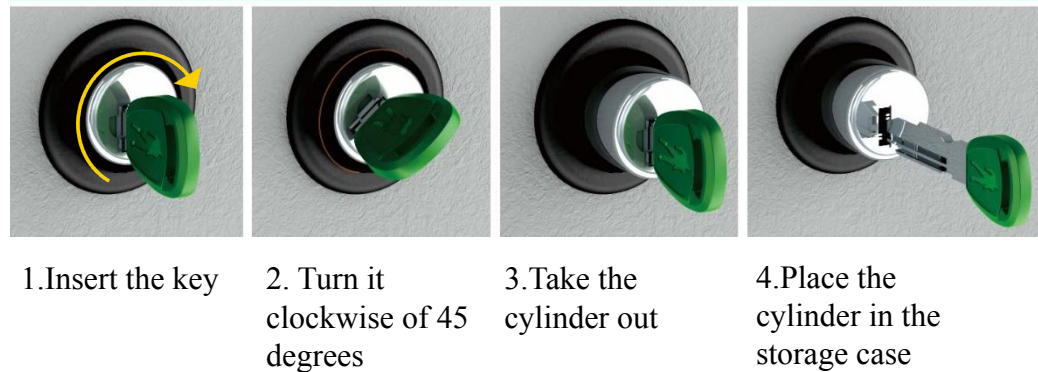
Pin-Lock

- The cylinder protrudes about 25mm in unlock situation.
- The cylinder is fixed on the lock body.



LOCK / UNLOCK

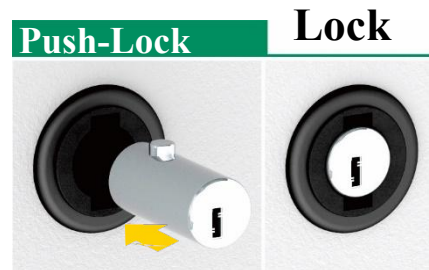
Unlock



Product Types

Push-Lock

- lock or unlock both are flat.
- Additional storage case for the cylinder



1. Place the cylinder in

2. Lock

LOCK / UNLOCK

Unlock



1. Insert the key

2. Turn it clockwise of 45 degrees

3. Take the cylinder out

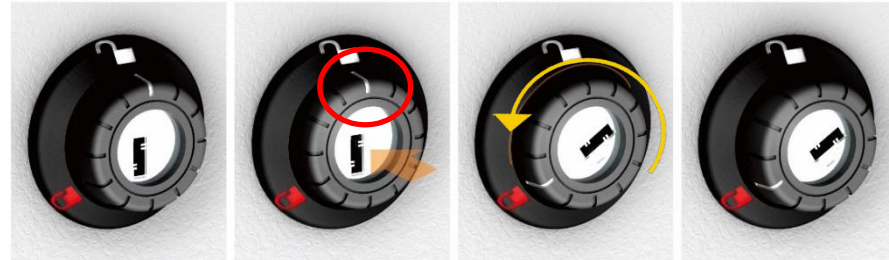
4. Place the cylinder in the storage case

Product Types

Rotary

- **Roll the cylinder** then lock.
- According white line position to check if lock or unlock .

Rotary-Lock Lock

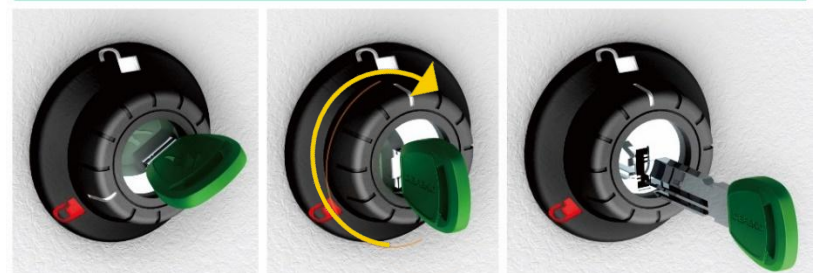


1.Unlock

2.Pres the cylinder 3.Turn it
counterclockwise of 120 degrees

4.Lock

Unlock



1Insert the key

2.Turn it clockwise of 120 degrees 3.Turn the key back
then take out

LOCK / UNLOCK

Product Types

Smaller type key cylinder

- Flat Appearance

Lock



1. Insert the key

2. Turn it counterclockwise to the end.

3. Take the key out

Unlock



1. Insert the key

2. Turn it clockwise to the end

3. Take the key out

LOCK / UNLOCK

Product Features

1 Hide Interior

It can match the **gear shift structure** and be installed inside the console, only the cylinder can be seen.

2 Non-interference Electrical System

Full mechanical motion with steady and reliable operation.

3 High Security

The lock mechanism is concealed within the gearshift lever base, making it difficult for thieves to locate and attempt disassembly or damage.

4 Cylinder

Patent high-strength cylinder with **complicated combinations** can avoid destroy and theft.



Exquisite and hidden installation

Product Features

5 Installation

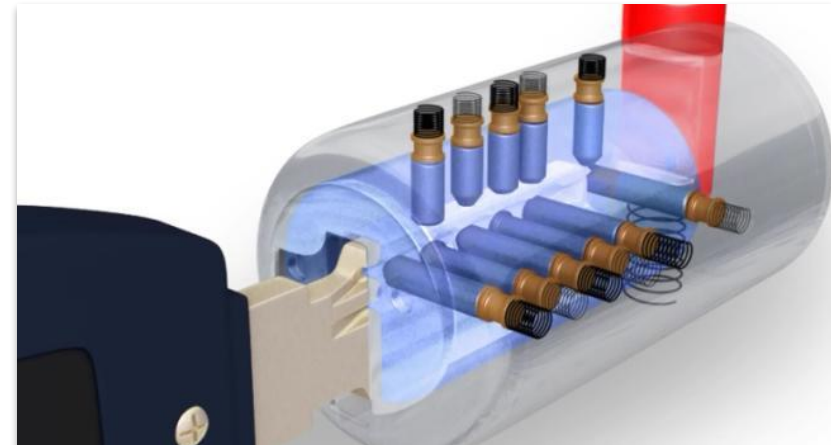
Individually design for each car, installation does not occupy additional interior car space.

6 Quality Guarantee

- IATF16949 Certifications
- Product reliable. certifications from SGS testing.

7 Patent Design

- The cylinder is equipped with special design and multi-combinations, which is difficult to crack.
- Patent design with special material can protect against drilling, knocking and sawing.



Difficult to decipher

8 Unique Key

- Each key with a special profile has gotten an unique number for duplicating.
- Usually each lock with 3 keys (one of them is LED key).



Keys cannot be duplicated

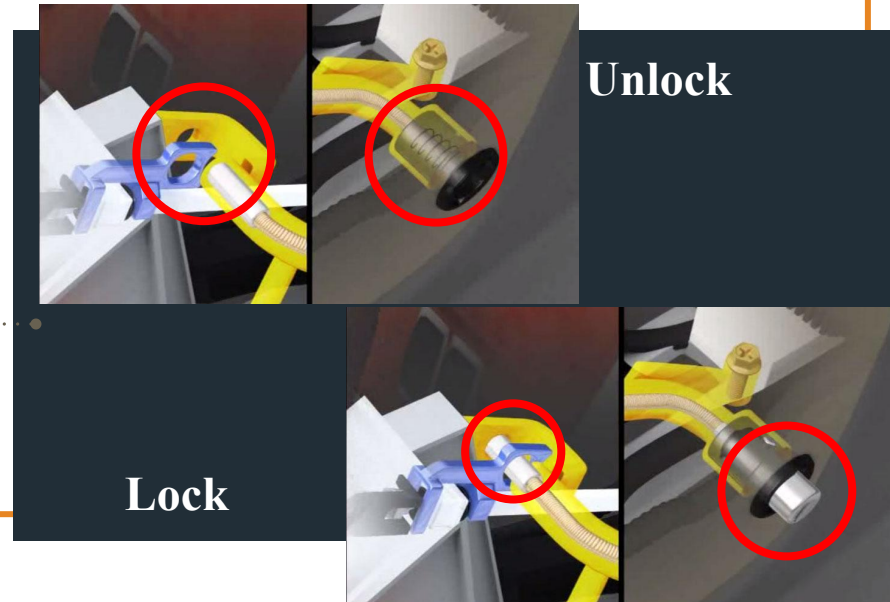
Function Description



Operation Model

Use **main bracket** and fitting device to lock the gear-shift.

LOCK / UNLOCK



THANK YOU

力巨人[®]

力巨人有限公司
DEFEND GROUP CO., LTD.
www.defend.tw

