

WELCOME

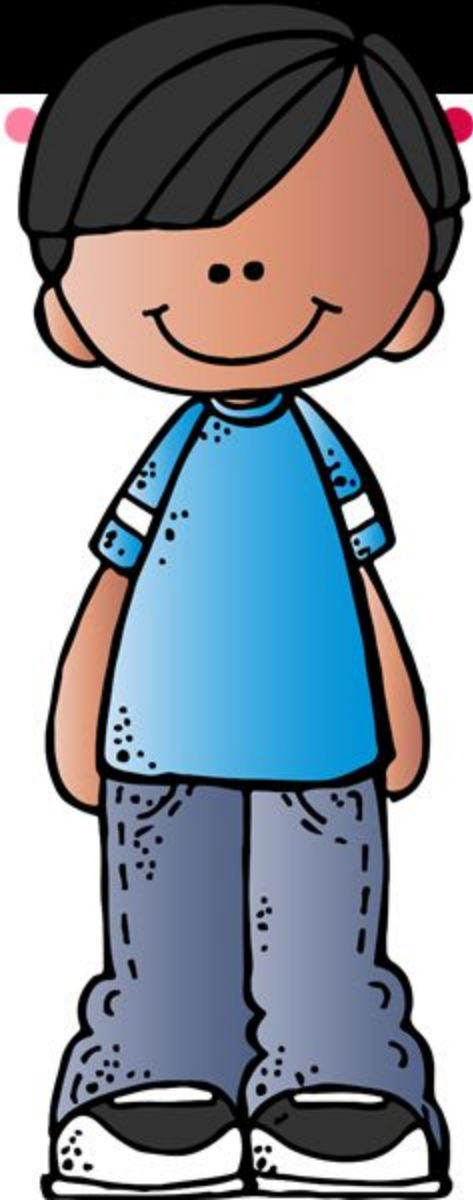
BACK TO SCHOOL

4th Grade



Objective

At the end of our presentation you will get an insight of what to expect during your scholar's journey through 4th grade.

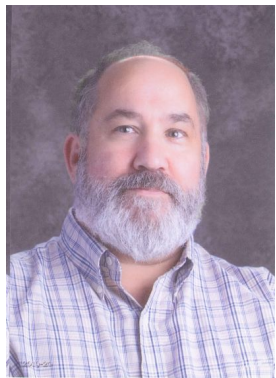


Meet the 4th Grade Team!!

- First point of contact for ALL 4th Grade teachers is Class Dojo.
- We are reachable from 7:55 am-2:55 pm on School Days.
- A secondary form of contact is our email:



Ms. Daniel RELA/SS/ TL
ydaniel@cmitelementary.org



Mr. Williams
Math/Sci
mwilliams@cmitelementary.org

Mrs. Cooper RELA/SS
mbrewer@cmitelementary.org



Mr. Trippe
Math/Sci
etrippe@cmitelementary.org



School Uniform



Wearing a **school uniform** is really **important** because it gives scholars the feeling that they **ALL** belong in one community. Please ensure that your scholar is in full uniform daily including on P.E. days.

****Please find a space to label all clothes with names (ESPECIALLY JACKETS)****

SCHOOL MOTTO/ Expectations



I will Respect Myself & Others

I will Opt to be Scholarly

I will Act Responsibly

I will React with Kindness



Class dojo is not only the way we communicate with families but is also how we effectively manage students throughout the school day.

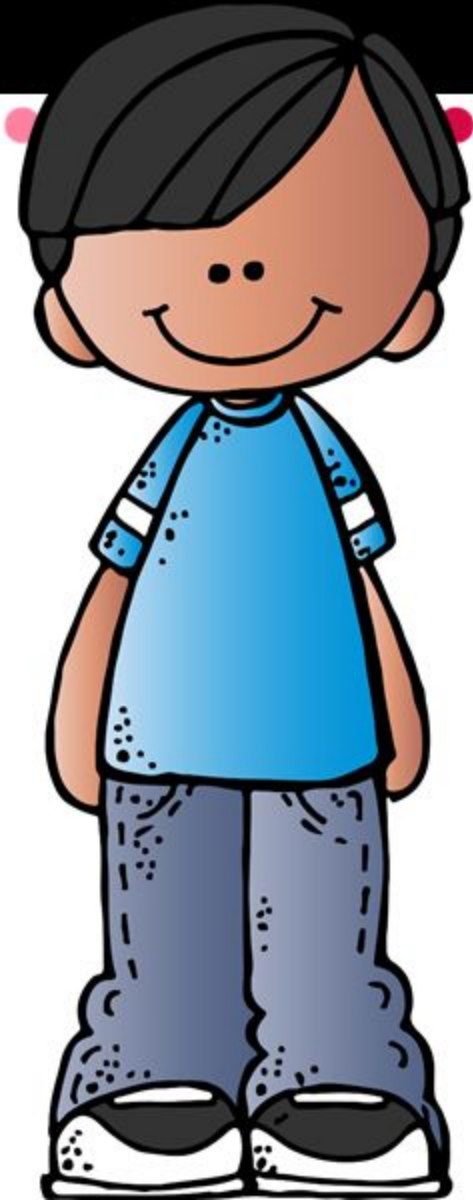
Tiers	Points
Tier I Bronze	50 points
Tier II Silver	75 points
Tier III Gold	100 points

Students will earn 2 points for ROARING behavior and lose 1 point for not ROARING.

We encourage parents to use Class dojo as a springboard for daily conversations & reflection about the school day.

General Schedule

Arrival Begins at 7:35 am
Instruction Begins 7:55 am
Recess 11:45 am
Lunch 12:05 pm
Specials 1:05 pm
Dismissal 2:15 pm



Class Schedules

4th Grade Schedule



GRADING SCALE

(Determined by the PGCPS Board of Education)

- A** = Excellent progress at the level of instruction indicated 90 – 100%
- B** = Above Average progress at the level of instruction indicated 80 – 89%
- C** = Average progress at the level of instruction indicated 70 – 79%
- D** = Below Average progress at the level of instruction indicated 60 – 69%
- E** = Unsatisfactory progress (failure) at the level of instruction indicated 50- 59%.

Grades of 0 (zero) can only be used in the event that a student does not attempt to complete an assignment.

- I** = Incomplete. The “I” grade may be used for elementary students who have been lawfully absent from school and have not had an opportunity to make up missed work in a timely manner.

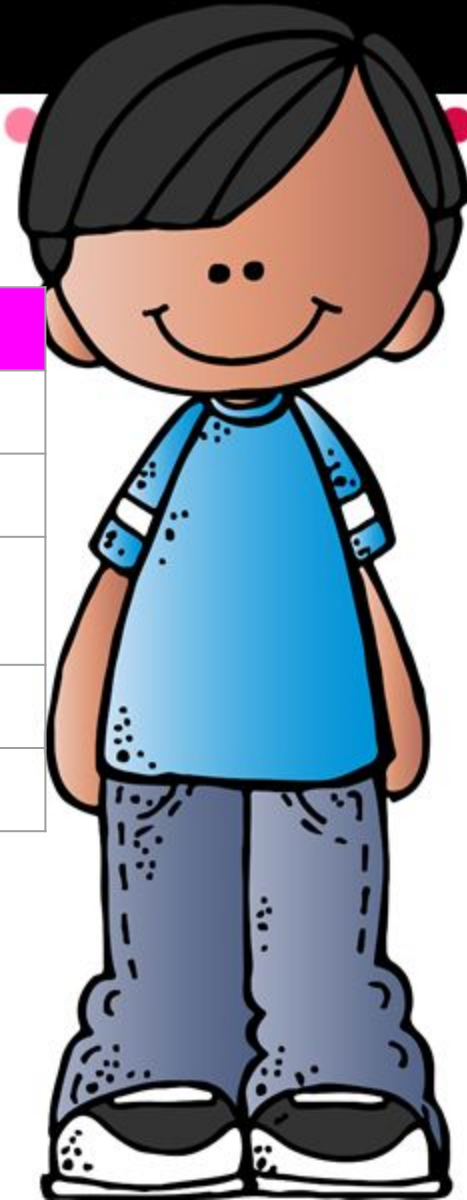


Students will receive grades weekly in **ALL** subject areas. Grades will be updated no later than Sunday. Please check Synergy weekly.

Grading Categories

Subject	Independent	Classwork	Assessment
Health	15%	60%	25%
Math	25%	35%	40%
Reading & Oral Communication	25%	35%	40%
Science	25%	35%	40%
Social Studies	25%	35%	40%

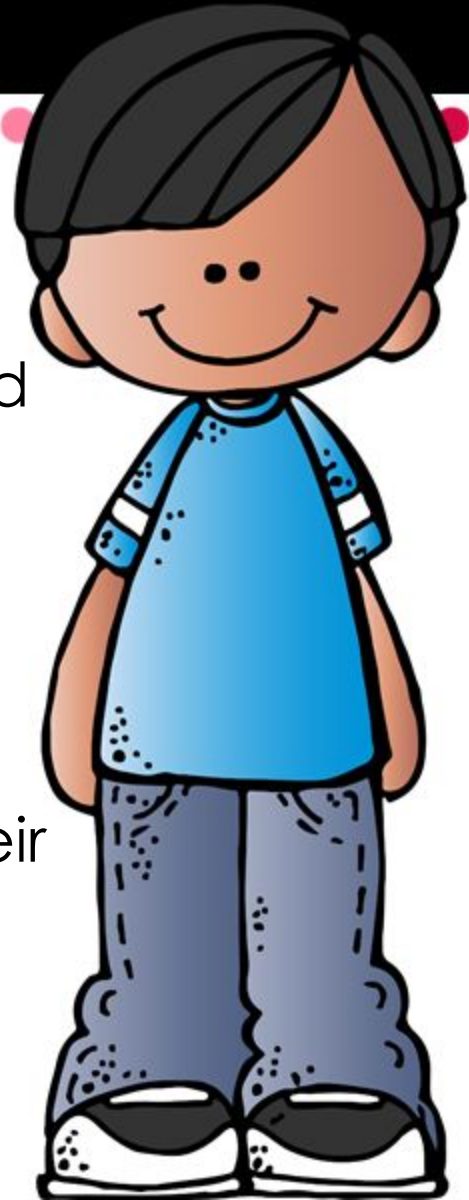
*As per PGCPS Grading & Reporting for Elementary Schools Early Childhood through Grade Five



Grading Expectations

As students transition to fourth grade, expectations increase. Independent work and timely completion are crucial. With a lot of content to cover, staying focused and organized is key.

Reviewing daily materials on Google Classroom will help students stay on top of their work.



Submitting Work

It is the student's responsibility to ensure that all work will be turned into the proper platform by the due date (i.e. Google Classroom, etc.)

All work must be neat, complete, and on time!

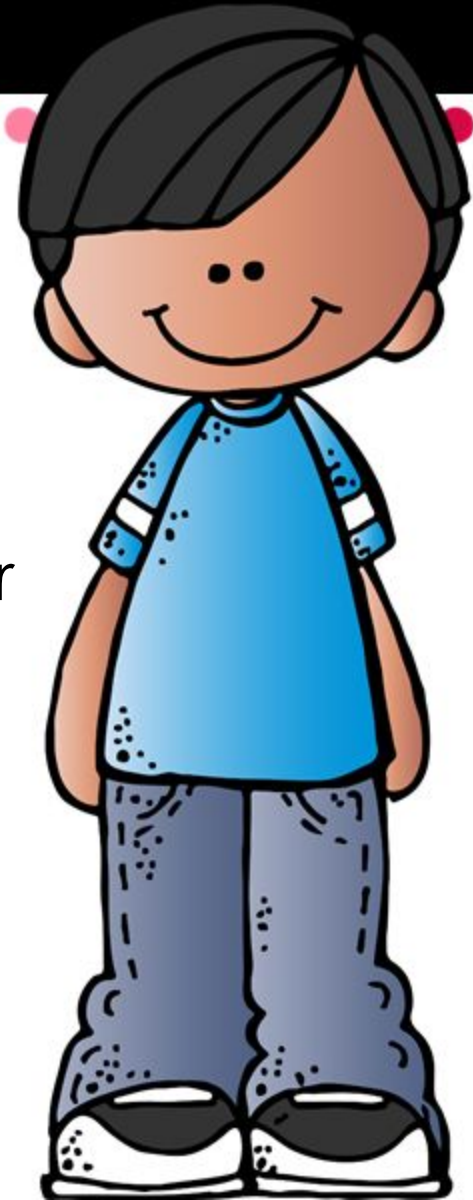


Redo of Assignments

Students will have an opportunity to redo eligible assignments for a better grade.

Students may request a redo of an assignment that received a score of 69% or below within 5 days of the assignment being posted on Synergy.

A Google Form will be located in Google Classroom where students can make his/her requests.



Homework

Math/Sci

- Students are expected to complete 60 minutes of math IXL practice weekly. Students receive 1 point for every minute spent working on Skills outside of the classroom.
- Additional assignments will be assigned when necessary.

RELA

- Students are expected to read 20-30 minutes every night.
- Students will also have a reading passage and different comprehension questions to answer each night.
- Homework is due on Fridays unless otherwise noted.



Field Trips

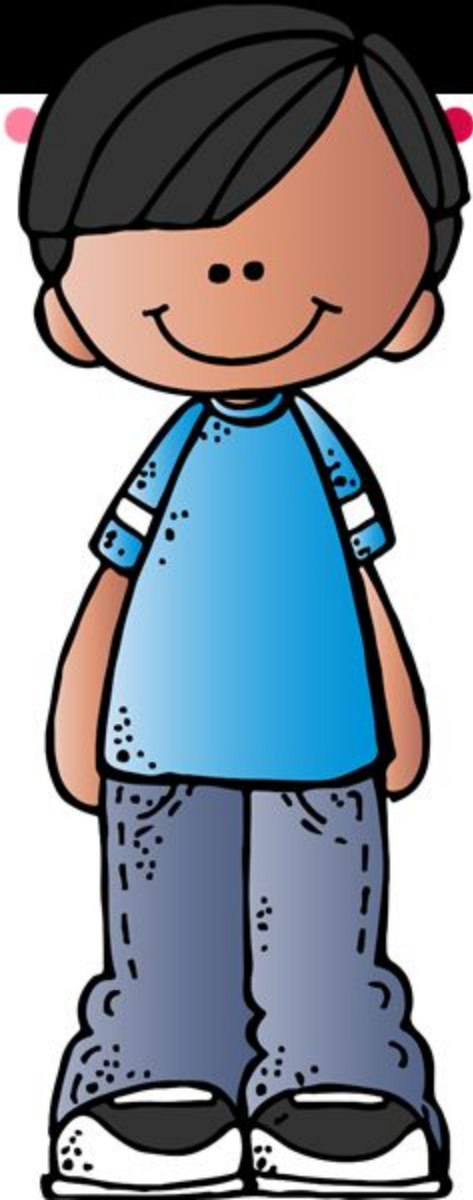
Skate Zone- October 25, 2024

Imagination Stage- December/ January*

Baltimore Museum of Industry- March 2025*

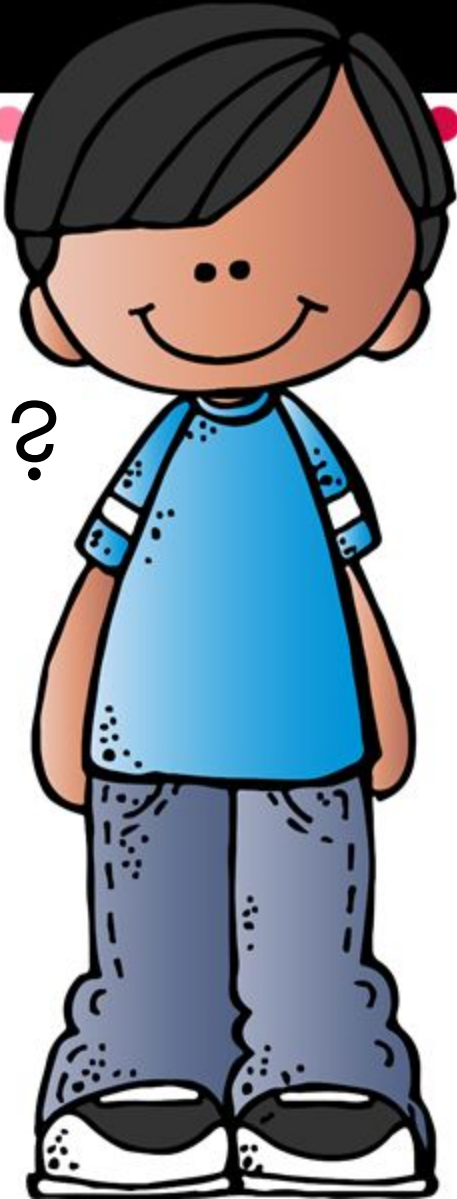
Science Guys of Baltimore- April 2025*

*dates have not been finalized





Any
Questions??

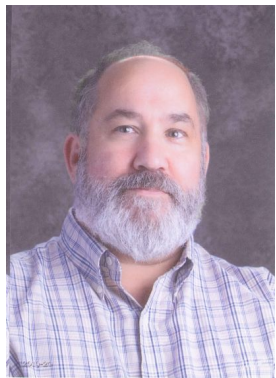


Meet the 4th Grade Team!!

- First point of contact for ALL 4th Grade teachers is Class Dojo.
- We are reachable from 7:55 am-2:55 pm on School Days.
- A secondary form of contact is our email:



Ms. Daniel RELA/SS/ TL
ydaniel@cmitelementary.org



Mr. Williams
Math/Sci
mwilliams@cmitelementary.org

Mrs. Cooper RELA/SS
mbrewer@cmitelementary.org



Mr. Trippe
Math/Sci
etrippe@cmitelementary.org

