



UC SILS Town Hall: Ongoing Shared Governance

Hosted by Adrian Petrisor and Ben Alkaly
Communication Operation Leads

September 21, 2021

Before We Start...

- This Town Hall will be recorded, shared, and hosted on Google Drive
- Closed captioning (automated by Zoom) is available
- Submit questions via the Q&A queue (Danielle is your moderator)
- After your typed question is asked, you will be unmuted in order to clarify or ask follow-up questions

Agenda

- Welcome and introduction
 - Part 1
 - UC Libraries Advisory Structure (UCLAS) Overview
 - Ongoing SILS Governance and Operations Structure Overview
 - Part 2
 - SILS Operations Center at CDL
 - Planning the transition, from phase 4 to the ongoing structure
 - Q&A
-

Today's Speakers

UCLAS overview

- Micquel Little, Direction & Oversight Committee (DOC) Chair, UCSF

Ongoing SILS Structure Overview

- Ginny Steel, Shared Governance Task Force (SGTF) Co-Chair, UCLA
- Aislinn Sotelo, Shared Governance Task Force (SGTF) Co-Chair, UC San Diego

SILS Operations Center at CDL

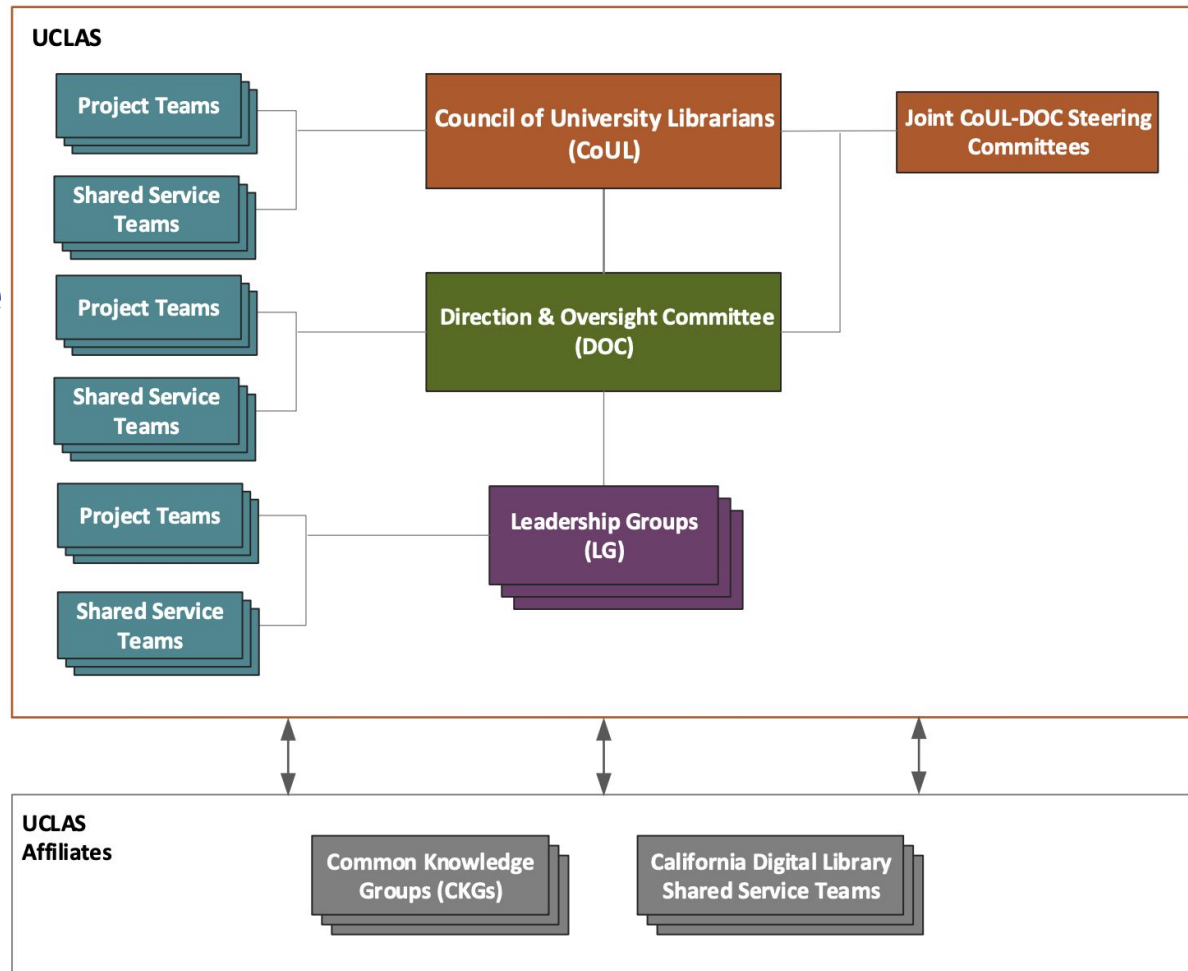
- Caitlin Nelson, SILS Service Manager, CDL

Transition to ongoing SILS structure

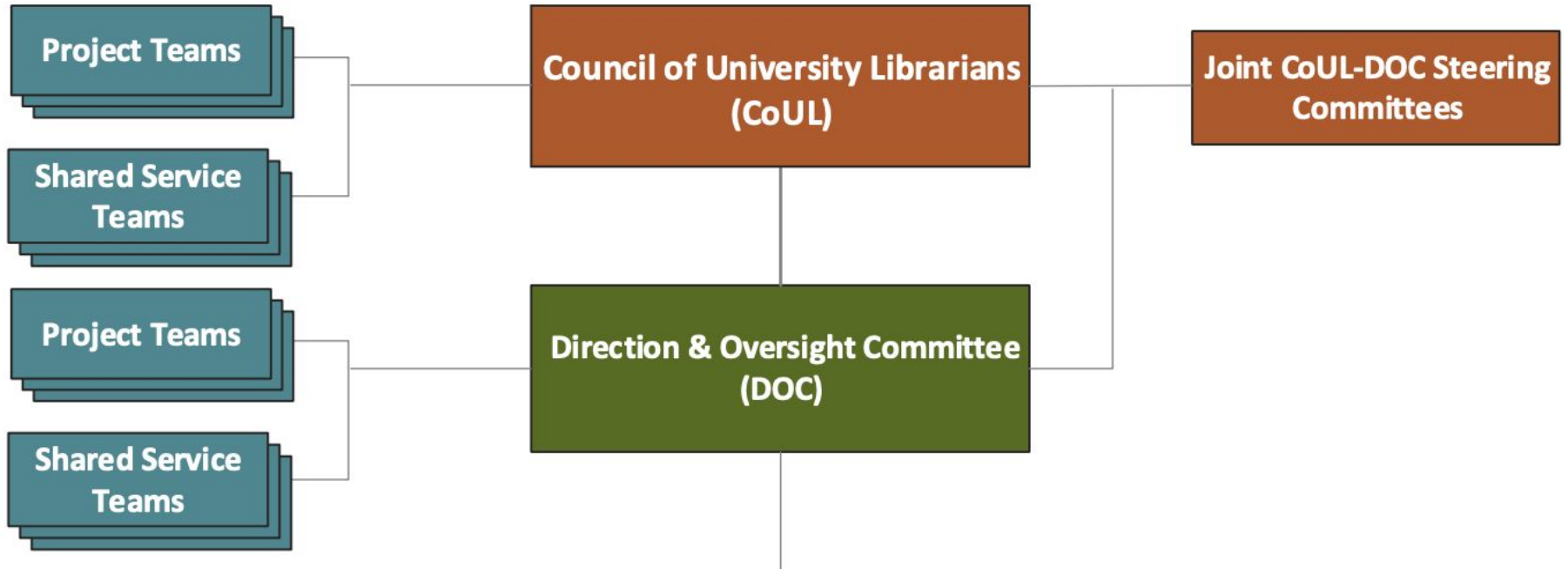
- Christine Barone, SILS Project Manager, SRLF, UCLA
- Lena Zentall, SILS Project Manager, CDL

UC Libraries Advisory Structure (UCLAS)

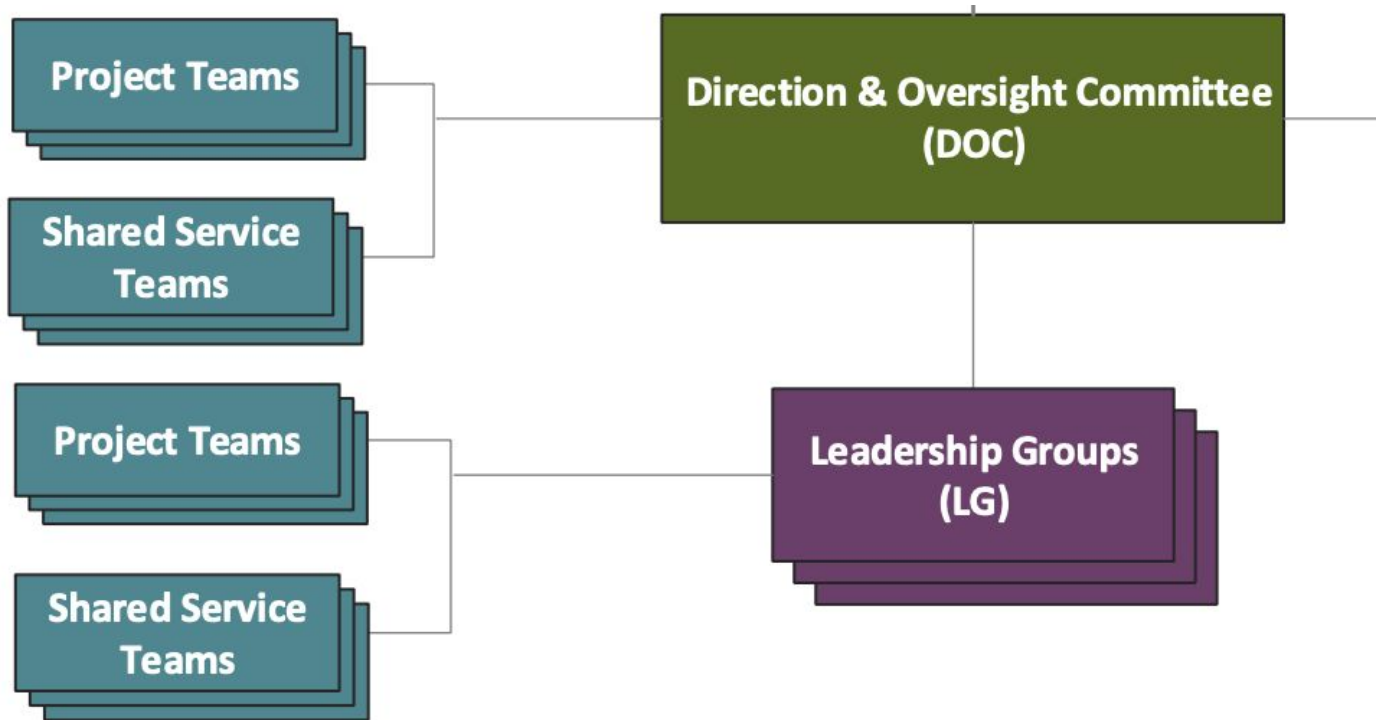
For more information and to see the full org chart with definitions, visit: <https://libraries.universityofcalifornia.edu/about/advisory-structure>



UC Libraries Advisory Structure (UCLAS)



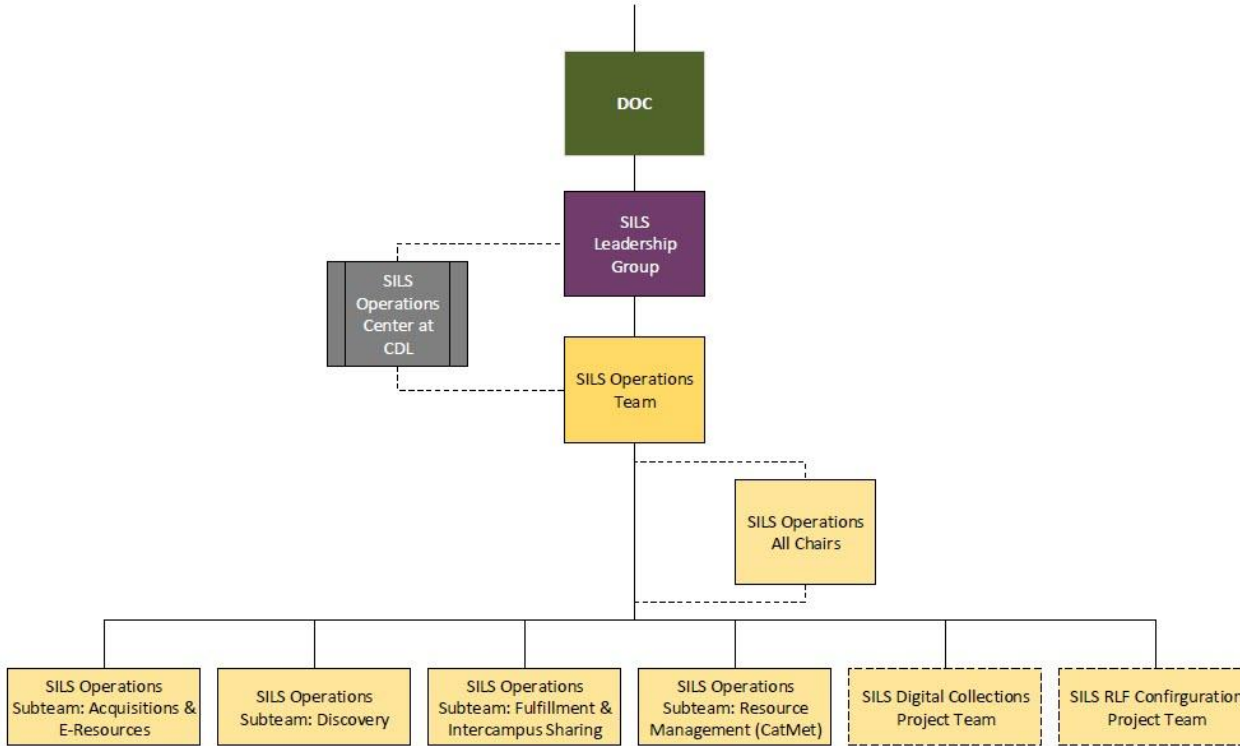
UC Libraries Advisory Structure (UCLAS)



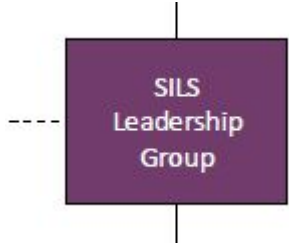
Ongoing SILS Structure

- New, ongoing SILS Structure will commence Jan. 2022
 - Completely replace phase 4 structure; there will be membership overlap (phase 4 --> new structure)
 - Organized to support ongoing operations and work
 - Remains a significant FTE commitment (~85 ongoing positions)

UCLAS-Integrated SILS

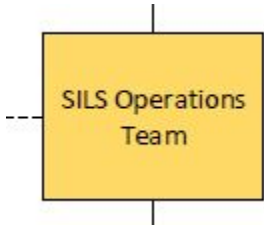


SILS Leadership Group



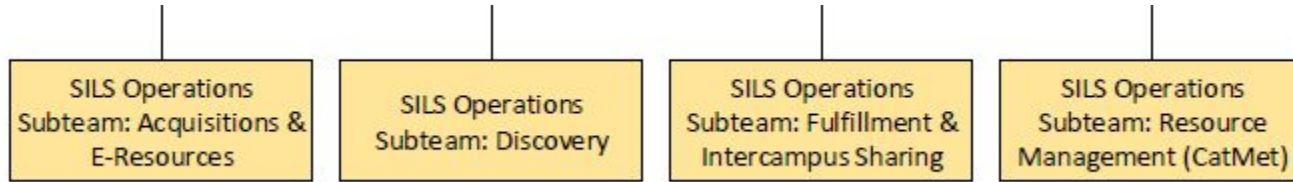
- Reports to DOC
- Non-representative group of senior library leaders
- Responsible for systemwide SILS strategic direction
- Provides oversight and guidance on systemwide SILS operations
- Serves as an escalation path (with additional expert/leaders engaged, as needed)

SILS Operations Team



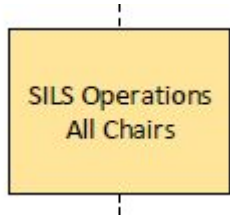
- Reports to the SILS Leadership Group
- Representative membership
- Leads and coordinates systemwide operational use of the SILS, including UC Library Search and the Network Zone, in partnership with the SILS Operations Center
- Provides oversight and guidance to operations subteams

SILS Operations Subteams



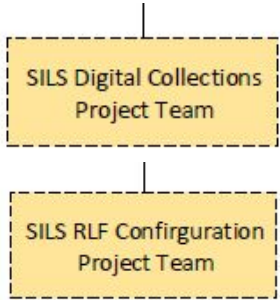
- Report to SILS Operations Team
- Representative membership
- Responsible for developing, implementing, and maintaining UC-wide policies, practices and workflows, as well as function-based reporting/analytics, training
- Escalates policies/practices impacting FTE, cost & other factors
- Some ops subteams divide into two branches

SILS Operations All Chairs



- Information-sharing and consultative group (not decision-making)
- Brings together operations team/subteam chairs
- Supports cross-team/subteam dialog, relationship-building and issue resolution
- Bolsters SILS communication and collaboration pathways

SILS Project Teams



- Created and charged, as needed, to perform time-limited and clearly scoped activities with specific outcomes and end dates
- Two known project teams at the onset of Ongoing SILS: Digital Collections and RLF Configuration (both ongoing from phase 4)

Additional details about ongoing SILS

- **Communications** remains a priority - within SILS, UCLAS and the UC Libraries broadly (including use of Confluence)
- **Training** (due to new releases, changes to policies/practices) will be deployed through the Operations Subteams
- **Escalation pathways** remain within the ongoing structure
- **Opportunities for functional growth / new groups** remain; focus now aligns with current work needs and opportunities

Ongoing SILS Principles

Ongoing SILS work practices and activities will be informed by SILS principles:

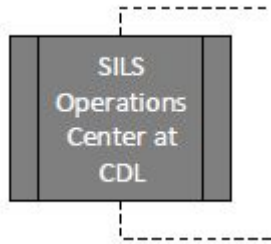
1. Prioritize high-quality user experience;
2. Transform and harmonize library work practices and policies;
3. Innovate and explore new ways of working, being mindful of benefits and costs;
4. Advance UC's values of diversity, equity, inclusion, justice and belonging through SILS-related operations and work practices;
5. Empower data-driven and consultative decision-making;
6. Commit to shared governance, transparency and open communication;
7. Align SILS-related work with near- and long-term systemwide priorities.

Q&A

UNIVERSITY
OF
CALIFORNIA Libraries



SILS Operations Center at CDL



- 3 full-time CDL staff, plus development staff in D2D
- Partners with cross-campus SILS teams to ensure the operational success of the SILS; primarily focuses on the health and maintenance of the software: Alma, Primo VE, VDX.
- Not a policy-making body by itself, but in collaboration with the shared governance structure.
- More at: <https://cdlib.org/services/d2d/sils/sils-operations-center-at-cdl>

Planning the Transition to Ongoing SILS

- Working Group charged a **Transition Task Force**
- TTF kicked off August 23 and will work through January
- Team
 - Donald Barclay, UCM, DOC liaison
 - Christine Barone, UCLA SRLF, PM, co-chair
 - Sarah Houghton, CDL
 - Michelle Polchow, UCD
 - Hermine Vermeij, UCLA
 - Lena Zentall, CDL, PM, co-chair

TTF Scope of Work

- Managing nomination and appointment process for new groups, working closely with DOC
- Manage the onboarding process for new groups
- Populate new collaborative work spaces and communication tools
- Ensure unfinished work is moved over for SILS Operations Team to assign
- Charge is posted on SILS website:
https://libraries.universityofcalifornia.edu/groups/files/sils/docs/SILS_Transition_Task_Force_Charge.pdf

TTF Timeline

October/November

Nominations

Identify essential
documentation and
resources for new groups

Welcome letters

December

Plan Kickoffs

January

Kickoffs

Access to new
collaboration workspaces

Q&A

UNIVERSITY
OF
CALIFORNIA Libraries



Thank you

