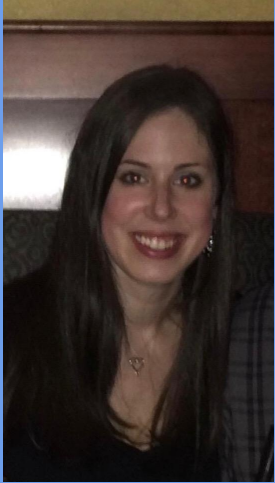


Bienvenido a Phelps Luck Elementary

Por favor escriba en la ventana de chat, su nombre y apellido Y el nombre y apellido de su estudiante



Meet The 3rd Grade Team



Mrs. Hansen



Ms. Kempner



Mrs. Lee



Ms. Zester



Meet The 3rd Grade Team (Continued)



Ms. Benton
(Interventionist)



Mrs. Taylor
(Grade Level Paraeducator)



Mrs. Goldman





Kim Von Stein

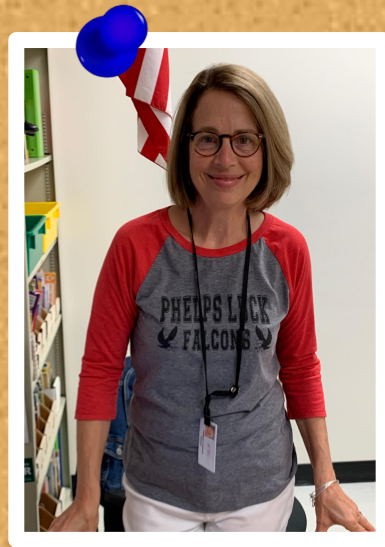
Our PLES Reading Team



Tracy Jones



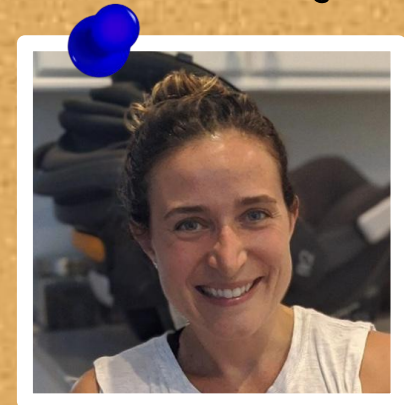
Carolyn Williams



Pam Brazis



Patti Blackburn



Jessica Pardew

PLES MATH TEAM

- Mrs. Stairs
- Mr. Clark
- Mrs. O'Neill
- Mrs. Simcock



ESOL Support

Ms. Meske



Ms. Huang



PLES PARENT TEACHER ASSOCIATION (PTA)

WHO ARE WE?

We are a group of parents/guardians, teachers, and administrators who volunteer our time to provide academic, social, and cultural enrichment to each student at PLES throughout the school year.

Through advocacy, events and fundraising, we strive to provide the support our students, families and staff need to make our PLES community the best it can be for our children to learn and grow.



2020 – 2021 EXECUTIVE COMMITTEE



**Michele
McGee-Guthrie**
President



Cara Martin
VP2 Fundraising



**Pic
Coming
Soon**

Cherie Helfrich
Secretary



Vacant

Vacant
VP1 Membership



Kelly Frank
*VP3 Teacher
Liaison*



Ann Wacha
Treasurer

WHAT DOES THE PTA DO?



MEMBERSHIP Q&A

Membership
\$10 per year

PTA Meetings are
Open to Everyone
(not just members)

Volunteering is
Open to Everyone
(not just members)

First Wednesday of every month
@7:00pm

Members
Vote on PTA
Matters

Meetings are
NOT
Mandatory

Volunteer
On Your
Schedule

WHERE TO FIND US



www.phelpsluckpta.org



VISIÓN: Cada estudiante y miembro del personal acepta la diversidad y posee las habilidades, el conocimiento y la confianza para influir positivamente en la comunidad en general.

MISIÓN: El HCPSS garantiza el éxito académico y el bienestar socioemocional de cada estudiante en un entorno inclusivo y acogedor que cierra las brechas de oportunidades.



Más información: www.hcpss.org/scta



Correo electrónico

Noticias escolares,
HCPSS News, avisos de emergencias



Texto

Solo avisos urgentes/de emergencia
-mande un texto al 67587 que
diga YES, y repita otra vez



Sitio del HCPSS www.hcpss.org

Noticias y recurso de información de todo
el sistema escolar



Sitio de la escuela ples.hcpss.org

Noticias de la escuela, calendario,
deportes y clubes, directorio escolar y
más



ClassDojo

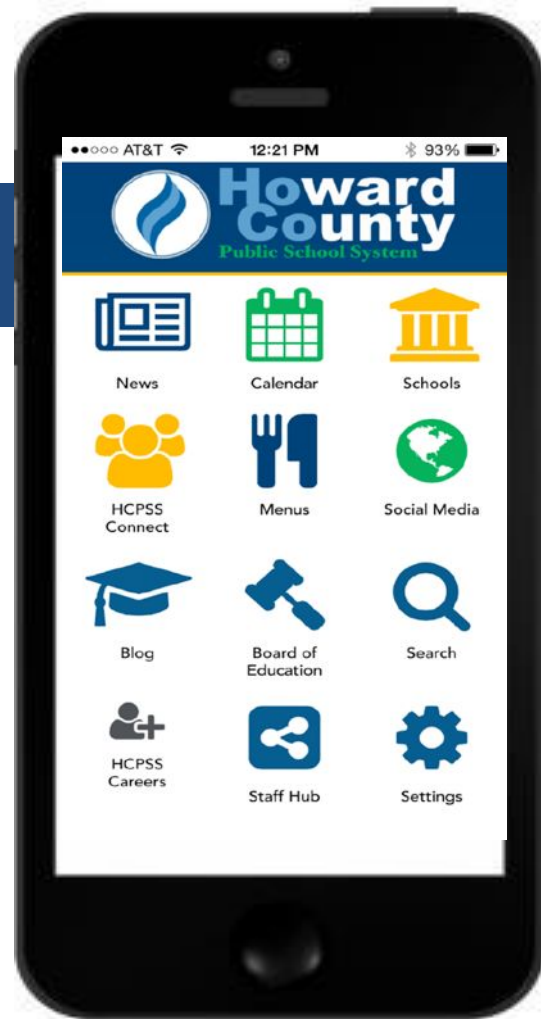


Twitter: @hcpss_ples

Aplicación móvil del HCPSS

Descarga gratuita en el *App Store*:

- iPhone
- iPad
- Android



Cierres/demoras escolares



www.HCPSS.org



@hcpss



HCPSS News



HoCoSchools



HCPSS Status
status.hcpss.org



Hotline
410-313-6666

Salud mental y apoyos para estudiantes

Consejera Escolar **Jessica Jones**

Psicóloga Escolar : **Amy McMillion**

Maestra Principal, Aprendizaje Social-Emocional: **Sarah Croushler**

Enlace para la Comunidad Hispana: **Ana García-Hedges**

Trabajadora de Servicios Estudiantiles : **Ronda Lennon**

Más información :

www.hcpss.org/supports/mental-health-wellness

hcpss *connect*

**Sistema de información
del estudiante *Synergy***

**Sistema de
Aprendizaje *Canvas***

Archivo Familiar

www.hcpss.org/connect

Escuelas de Título I



- Programas, servicios y enriquecimientos destacados en toda la escuela
- Disponibles para todos los estudiantes de nuestra escuela
- Participación familiar para todas las familias

Menús escolares interactivos



- Descripciones de alimentos
- Nutrición y alérgenos
- Recuento de carbohidratos
- Enlaces para pre-pago
- Enlace para la solicitud de FARMS
- Menús de desayuno y almuerzo

- <http://hcpss.nutrislice.com>
- free iPhone or IOS app
- HCPSS Mobile App

Comidas gratis y a precio reducido (FARMs)

Paso 1: Visite www.hcpss.org/farms/

Paso 2: Haga clic en “*Apply Online*” para iniciar el proceso de inscripción en línea

SITIO DEL HCPSS

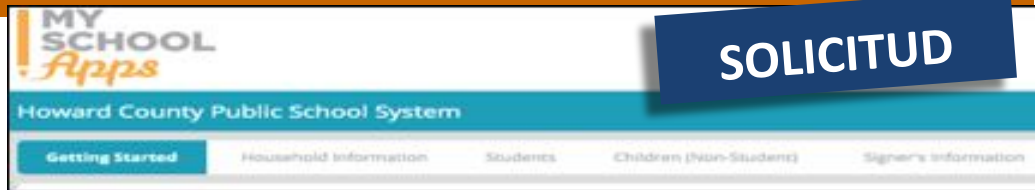
Cómo presentar una solicitud

Envíe solo una solicitud por grupo familiar. Las familias que necesitan asistencia con computadora o con el idioma para presentar una solicitud en línea, comuníquense con la escuela de su niño. Ver las pautas de requisitos de ingresos federales.

En línea

**ENVIAR SOLICITUD EN LÍNEA
(IDIOMAS ADICIONALES DISPONIBLES)**

*Después de que se haya enviado y revisado la solicitud en línea, las notificaciones de elegibilidad se enviarán por correo electrónico o por correo.



Para empezar

Lo que deberá proporcionar durante el proceso de solicitud:

- El nombre y los ingresos actuales de cada miembro de su grupo familiar
- La escuela y el grado de cada estudiante en su grupo familiar
- Su firma electrónica
- (Opcional) Una dirección de correo electrónico válida o un número de teléfono para la comunicación del distrito sobre el estado de la solicitud
- Si está listo para comenzar, haga clic en el botón a continuación para comenzar el proceso de solicitud en línea.

INICIE EL PROCESO DE SOLICITUD EN LÍNEA

Servicios de comidas escolares

Servicio de comidas listas para llevar (Grab-and-Go)

Desayuno: de 8am a 9am

Almuerzo: de 10:45am a 12:45pm

Días de semana en todas las escuelas del HCPSS (excepto Esc. Interm. Burleigh Manor y Esc. Secund. Hammond)

Precios en base al estado de elegibilidad (gratis, precio reducido o sin descuento)

*Los estudiantes pueden recibir comidas en cualquier localidad



Recursos comunitarios

Varias organizaciones en el Condado de Howard ofrecen servicios y recursos para estudiantes y familias.



www.hcpss.org/community-news-and-programs/

Asistencia



Lunes, martes, jueves y viernes

- El maestro del salón de clases de escuelas primarias (K a 5º grados) y el maestro de matemáticas toman asistencia
- La asistencia de escuelas intermedias (6º a 8º grados) y secundarias (9º a 12º grados) se toma en cada clase

Miércoles (completar al menos un elemento durante la semana)

- Entregar tarea a un maestro
- Participar en instrucción sincrónica con un maestro del HCPSS
- Completar trabajo en el sistema de administración de aprendizaje Canvas, DreamBox o Lexia Core5

Calificación

La calificación de estudiantes continuará según las prácticas tradicionales de calificación.

Los padres deben revisar Canvas para actualizaciones sobre el desempeño.



Servicios de educación especial

El equipo del IEP o IFSP de cada estudiante, el cual incluye al padre, conversará cómo el plan actual del estudiante se implementará para el 2020-2021.

Los planes de continuidad de aprendizaje individualizado (ICOL) ya no se usarán.

Los padres serán contactados al inicio del año escolar sobre la mejor manera de proporcionar servicios a su niño en un entorno virtual.



Apoye la instrucción en su casa

El HCPSS ofrece las mejores prácticas para apoyar a las familias durante la transición hacia la instrucción virtual en el entorno de la casa.



<https://www.hcpss.org/2020-2021/supporting-instruction/>

Cómo obtener un dispositivo

Para identificar su necesidad de un Chromebook o Internet:

1. Si usted recibió un dispositivo (*Chromebook*) en la primavera 2020, seguirá usando este dispositivo. Los estudiantes nuevos a HCPSS recibirán un dispositivo automáticamente.
2. Si usted necesita ayuda en obtener internet, por favor déjele saber a la Sra, Ana García.

Join Band, Orchestra, and Chorus at Phelps Luck!

Why join?

- ♪ Learn to play an instrument and sing with your friends!
- ♪ Participate in LIVE classes with Ms. Strawley and Mrs. Yi
- ♪ Build a healthy, productive, and fun routine

Registration is NOW OPEN!

For detailed information and registration visit:

- [Ms. Strawley's Instrumental Music Site](#)
- Links can be found in the Canvas Grade Level Courses for grades 3, 4, 5



Welcome to 3rd Grade's Back-to-School Night

September 23, 2020

Virtual edition



Grade 3 Sample Student Schedule

| Monday | Tuesday | Wednesday | Thursday | Friday | |
|---|--|--|---|--|--|
| Morning Meeting/ SEL 9:00-9:15 | Morning Meeting/ SEL 9:00-9:15 | Asynchronous Assignments (3 hrs): LexiaCore (15-20 min) Math Task (30 min) Health (30-45 min) Rel Arts #1 (30 min) Rel Arts #2 (30 min) Rel Arts #3 (30 min) | Morning Meeting/ SEL 9:00-9:15 | Morning Meeting/ SEL 9:00-9:15 | |
| ELA Instruction 9:15-10:15 | ELA Instruction 9:15-10:15 | | ELA Instruction 9:15-10:15 | ELA Instruction 9:15-10:15 | |
| Synchronous Support 10:25-11:15 | Synchronous Support 10:25-11:15 | | Synchronous Support 10:25-11:15 | Synchronous Support 10:25-11:15 | |
| Lunch & 15 min Independent Reading 11:15-12:45 | Lunch & 15 min Independent Reading 11:15-12:45 | | Small group supports could include : Reading Intervention Math Intervention ESOL Special Education | Lunch & 15 min Independent Reading 11:15-12:45 | Lunch & 15 min Independent Reading 11:15-12:45 |
| Math Instruction 12:45-1:45 | Math Instruction 12:45-1:45 | | | Math Instruction 12:45-1:45 | Math Instruction 12:45-1:45 |
| Related Arts 1:50-2:45 | Content 1:50-2:40 | | Related Arts 1:50-2:45 | Content 1:50-2:40 | |
| Asynchronous work: 2:50-3:50 Math task (15 min) LexiaCore (15 min) Content follow up (30 min) | Asynchronous work: 2:50-3:50 Math task (15 min) LexiaCore (15 min) Writing Task (30 min) | | Asynchronous work: 2:50-3:50 Math task (15 min) LexiaCore (15 min) Content follow up (30 min) | Asynchronous work: 2:50-3:50 Math task (15 min) LexiaCore (15 min) Writing Task (30 min) | |

Related Arts

In a related arts cycle, students will attend music, art, media, technology, and PE

1 related arts cycle = 5 weeks

- 2 synchronous (live) sessions of related arts each week
 - 3 asynchronous sessions (can be done throughout the week, or on Wednesday)
- Check with your child's homeroom teacher or Canvas courses for their schedule



Respecting **SOP** in our Virtual Classroom



| Self | Others | Property |
|--|---|---|
| <ul style="list-style-type: none">• Ready for school• Working in an environment where you can focus• Manage time and space | <ul style="list-style-type: none">• Use the chat box appropriately• Keep mic muted unless it's your turn• Raise your hand to share• Take turns with speaking | <ul style="list-style-type: none">• Use your school computer for learning• Keep your learning materials organized and ready for school• Learning materials are for school |



Meet

I know we're pros at distance learning already but... Google Meet Goals and Expectations

Be On Time!

ON TIME



Be prepared.
Check your tech
before class!

Mute Yourself!



Be sure to mute your
microphone when
you log in!

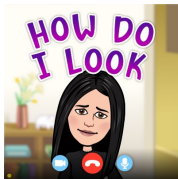
Participation!

MY
TURN



Be focused.
Pay attention.
Be an active learner!

Presentation!



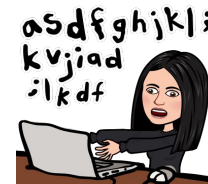
Can we see you?
Check your
surroundings.

Headphones!



Use headphones if
you can!

Chat Responsibly!



? = I have a question
! = I have an idea or
comment

Social Emotional Learning Connection

- x School-Wide PLES Circle Questions
- x Daily Morning Meeting

Mini-Lessons (Sample)

- x Perseverance
- x Mindfulness
- x Problem Solving
- x Embracing Differences



ELA: Reading and Writing Structures

Whole group language arts instruction 4 days a week, that will include:

- ✘ Live direct instruction of the reading and writing standards through modeled lesson and interactive read alouds;
- ✘ Differentiated small group instruction will occur each day during the ELA time, as well as the additional synchronous time for some reading groups). Each small reading group will be 20 minutes.
- ✘ Daily use of Lexia Core 5

*Supports for reading instruction are available on the
[HCPSS Family and Community Resource pages](#)*



ELA - Independent (asynchronous) Tasks

- ✘ Students will be engaged in Lexia Core5 for 15-20 minutes daily
(rubric will be shared)
- ✘ Independent reading will occur in the ELA time and is encouraged during/after lunch each day.
- ✘ There will be an assigned asynchronous writing lesson each week.
(This will begin soon)
- ✘ Most asynchronous tasks will be “weekly” assignments - posted on Monday and due the next Monday, to allow for flexibility in work completion (Related Arts, Math, Reading, Writing, Health)

For more information about HCPSS Elementary Language Arts visit :

<https://www.hcpss.org/academics/english-language-arts/>



Mathematics Structures

- ✘ Whole group instruction 60 minutes each, 4 days a week
- ✘ Standards-based instruction centered on big ideas in grade 3 including
 - Multi-digit addition and subtraction
 - Multiplication and division
 - Fractions
 - Problem solving
- ✘ Small group instruction will be part of this time **as needed**

For more information about mathematics visit
<https://www.hcpss.org/academics/mathematics/>



Math - Independent (asynchronous) Tasks

- ✘ One DreamBox lesson per day (approx 15 minutes)
- ✘ Canvas Tasks/ Assignments (Wednesdays)



Science Structures

- ✘ There are four units of instruction:
 - **Q1 - Life Cycles and Traits**
 - Q2 - Weather and Climate
 - Q3 - Forces and Interactions
 - Q4 - Plant and Animal Survival

For HCPSS Science information, visit:

<https://www.hcpss.org/academics/elementary-science/>

For more information about the Next Generation Science Standards, visit:

<https://www.nextgenscience.org/parentguides>



Science- Independent (asynchronous) Tasks

- ✘ Students will be using a Science Journal with every lesson
- ✘ Some lessons may ask students to go outdoors for an asynchronous task. **They are ALWAYS told to receive adult permission before going outdoors.** *There are also resources given, which they can use to complete the task if not able to go outdoors.*
- ✘ Some lessons will require students to gather household items for use, such as: *paper, paper towel tubes, cardboard boxes, recyclable materials, etc.*
- ✘ Science tasks are directly connected to the lessons they will be assigned after a lesson, and are to be completed prior to the next lesson.



Social Studies

- ✗ Formal instruction will begin October 13
- ✗ 4 units of instruction:
 - Communities Change
 - Location Matters
 - Our Relationship in the World
 - Project Citizen

For more details on the main concepts of each quarter, go to:

<https://tinyurl.com/2020-SocSt-Matrix>



Social Studies- Independent (asynchronous) Tasks

- ✘ Social Studies asynchronous tasks are directly connected to the lessons, they will be assigned after a lesson, and are to be completed prior to the next lesson.



Health- Independent (asynchronous) Tasks



- ✘ There are four units of instruction:
 - **Q1 - Social & Emotional Health (begins October 5)**
 - Instruction will be all asynchronous tasks in Q1
 - Q2 - Safety & Injury Prevention
 - Two synchronous lessons in Q2, with additional asynchronous tasks
 - Q3 - Substance Abuse Prevention
 - Q4 - Disease Prevention
- ✘ Students will be using a Health Journal in most lessons

For more information about the HCPSS Health Curriculum, visit:

<https://www.hcpss.org/academics/health-education/>

Grading and Reporting

- ✗ Quarter grade will be determined by percentage of points earned.
- ✗ Assignments will be based on points.
- ✗ One grade will be given for each content (ELA, math, science, social studies)
- ✗ Learning behaviors will not be reported on the report card during virtual instruction.

| | |
|---|-----------|
| A | 90 - 100% |
| B | 80 - 89% |
| C | 70 - 79% |
| D | 60 - 69% |
| E | ≤ 59% |



Attendance

NEW THIS YEAR

- x Attendance will be formally recorded in Synergy for Math and ELA
- x Teacher will keep record of student attendance during content lessons
- x If your 3rd grader will be absent or late, please notify the teacher and send an email to PLESAbsence@hcpss.org





Questions and Closure

Thank you for letting us be a
guest in your home!