



STUDENT ACCESSIBILITY AND
ACCOMMODATION SERVICES
UNIVERSITY OF MICHIGAN



Agenda

- Brief introduction/Overview of SAAS
- Updates
 - Scholarships/Funding
 - Department Updates
 - Accommodate Platform
 - Accommodations



STUDENT LIFE

**STUDENT ACCESSIBILITY AND
ACCOMMODATION SERVICES**

UNIVERSITY OF MICHIGAN



ACADEMIC SUPPORT &
ACCESS PARTNERSHIPS



ADAPTIVE SPORTS &
FITNESS PROGRAM

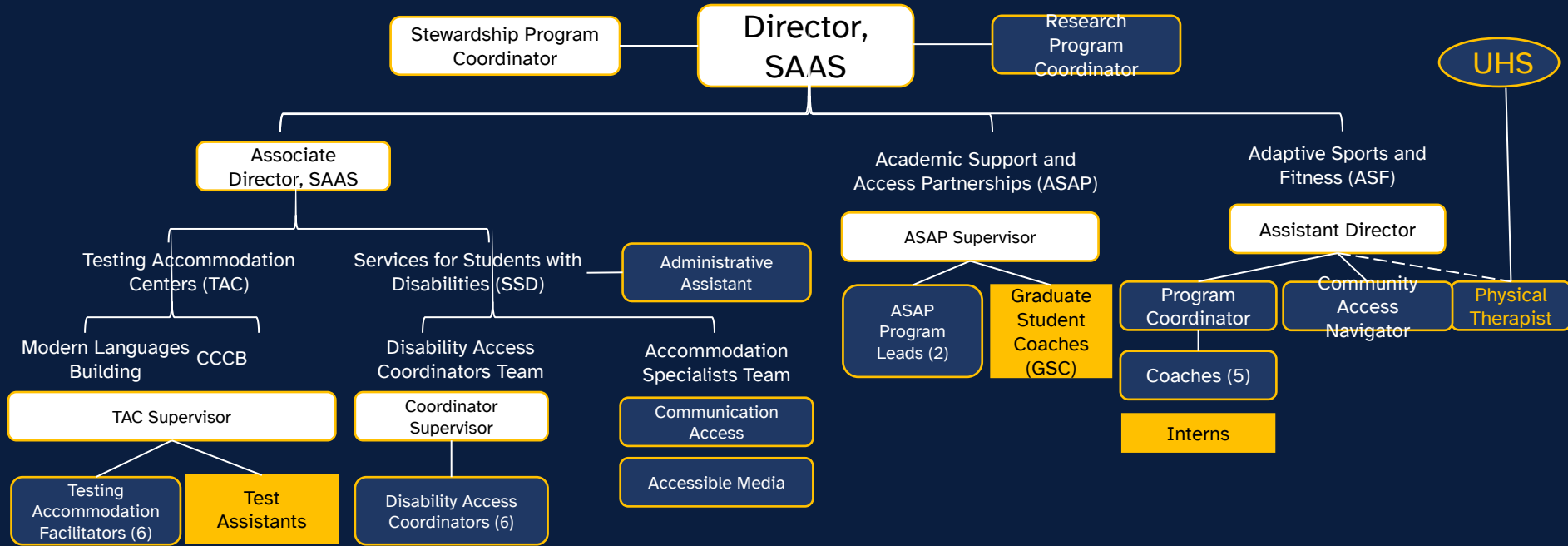


SERVICES FOR STUDENTS
WITH DISABILITIES



TESTING ACCOMMODATION CENTERS

STUDENT ACCESSIBILITY AND ACCOMMODATION SERVICES



[Link to Word Map of Org Chart](#)

Meet the SAAS Team:



[Meet the SAAS Staff](#)

From our Retreat at the [UM Adventure Center](#)

Our Fearless Leader:



Adaptive Sports and Fitness (ASF)

- Adding Wheelchair Rugby!
- Weekly “Drop in Events” open to University of Michigan students, Staff, Faculty, and Community
 - Wheelchair Basketball and Tennis
- 3rd Wolverine Invitation Basketball Tournament
 - Volunteers Needed
 - Sept 29-Oct 1 in Port Huron, MI
- Sign up for the [ASF Mailing List](#) to learn more, stay up to date on events, drop-in programming, and competitive opportunities



SAAS Scholarship Opportunities

[Click here to access the SSD scholarship applications](#)

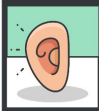
Hearing, Visual, and/or Mobility Disabilities



1 Saul & Shirley Lederer Merit Award FALL
Provides an annual award of at least \$1,000 to students connected with SSD who are active in the university community.

2 Ridley Scholarship SPRING/SUMMER
Needs-based financial assistance towards education for students with sensorimotor disabilities or chronic health conditions.

Deaf/Hard of Hearing



1 Wesley Smith Award FALL
Annual award of at least \$500 to an undergraduate student who is Deaf/Hard of hearing.

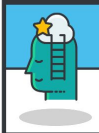
2 Beverly J. Waterman Scholarship for Hearing-Impaired Students WINTER
Scholarship to support full-time undergraduate students in good academic standing.

Vision Impairments



1 Norberto Salinas Memorial Fund FALL
To provide either direct or indirect assistance to visually impaired students interested in science-related studies (preference for mathematics majors).

Learning Disabilities



1 Nabi Family Fund FALL
To provide financial aid and to purchase technological tools to assist with academic work.

3 Jim and Patricia Read Support Fund WINTER
Provides needs-based technology support for students with dyslexia.

2 Burt Black Scholarship WINTER
Provides two \$2,000 awards yearly to students with learning and/or physical disabilities. Requirements: Essay describing Burt Black characteristics (see scholarship opportunities link for details).

All Disabilities



1 Caroline Sherbin Scholarship Fund WINTER
Needs-based support for students connected with SSD.

4 Alex's Great State Race Fund Scholarship WINTER
Scholarship support to undergraduate students who are connected with SSD.

2 E. Royster Harper Achievability Award FALL
Annual award of at least \$1,000.

5 Futterman Family Support Fund WINTER
Scholarship for undergraduate students connected with SSD. Preference for Dyslexia and/or ADHD students.

3 Central Student Government Campus Accessibility and Disability Affairs Commission FALL
Needs-based scholarship to support students connected with SSD.

6 Disability Funding **MONTHLY**
Provides funds for things to make one's University of Michigan experience more enjoyable, such as assistive devices, extracurricular/social activities, learning experiences, and/or community outreach.

Scholarships & Funding

- For Ann Arbor, Dearborn, & Flint students with disabilities
- 13 Annual Scholarships, one-time scholarships
 - \$107,855 Scholarships awarded 22-23 academic year
- Disability Funding
 - \$44,621 awarded in 22-23 academic year
- Tutoring Funds
- Mini Grants for student orgs to support students and people with disabilities

Academic Support & Access Partnerships (ASAP)

- **Academic Coaching:** Sustained Focus on Executive Functioning Skills (EFS)
- **Peer Assisted Study Sessions (PASS):** Check-ins and study strategies
- **Coaching Corner:** Live workshops on an executive function topic
- **Canvas:** Asynchronous modules focused on EFS' and disabilities
- **Campus Partnerships:** Sweetland, SLC, UCC, Rackham Graduate School
- **Disability Student Organization partnerships**
- **Upcoming Event:**
 - Virtual Resource Fair for SAAS Students
 - September 15, 12:00pm-1:15pm



Testing Accommodation Centers (TAC)

- Remodel Modern Languages Building (MLB) Space (In Progress)
 - Better Colors (Scarlet is gone!), More Accessible Welcome and staff spaces
- Deadlines
 - Faculty:
 - Submit exam request at least 5 days in advance
 - Provide exam by 8:00 am the day before the first scheduled exam
 - Students:
 - Can reserve seat up to 48 hours prior to exam.
- Finals: Different process. Faculty should submit requests immediately.
 - Exam requests will be processed and seats reserved based on when a request was received and existing capacity.
- Accommodate Changes:
 - Reduce email traffic

Services for Students with Disabilities (SSD)

- Partnerships:
 - Liaison Model:
 - Each School/College has a coordinator that is the primary contact for that school
 - Assistive Technology and Accessibility Tools (ATAT) Workgroup: Focused on implementation of AT at the University of Michigan.
- Updating Accommodation Language:
 - Updating language to reflect Accommodate Platform and Course Roster Screen
 - Ex. “Access to medical device” changed to “Cell phone/smart watch for health monitoring”
- Resources:
 - [Modified Attendance and Deadlines Guide/Agreement \(Faculty/Students\)](#)
 - Accommodation Implementation Guide (Faculty; In Development; will be shared via Accommodate)

Accommodate

- Updates in Place for Fall
 - WolverineAccess- Chosen (Preferred) Name will be primary for students and Faculty
 - Faculty can download course roster
 - Exploring email from Accommodate
- In Progress (Fall '23 or beyond)
 - Adding (Mid) Section to Accommodate
 - Faculty 'To do' portal
- Ongoing Conversations:
 - Manually adding Faculty to Course outside of WolverineAccess
 - Updated to Exam Module to streamline and simplify request process

Thank You

ssd.umich.edu