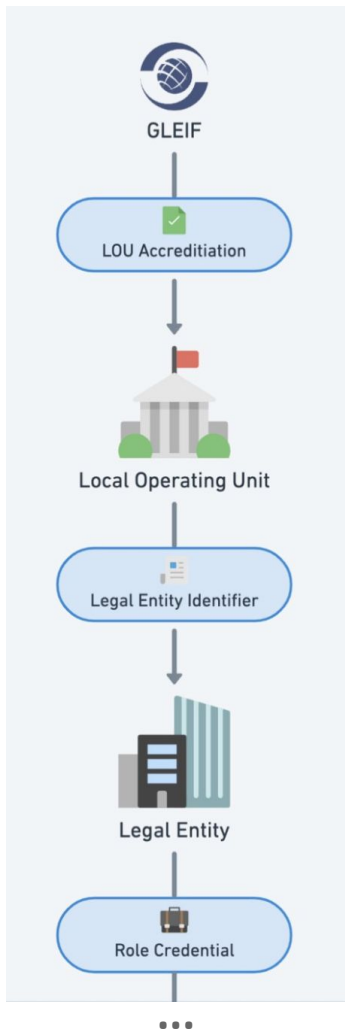


Accreditation

Presented for VC-EDU Task Force

Related VC Use Case (not EDU)

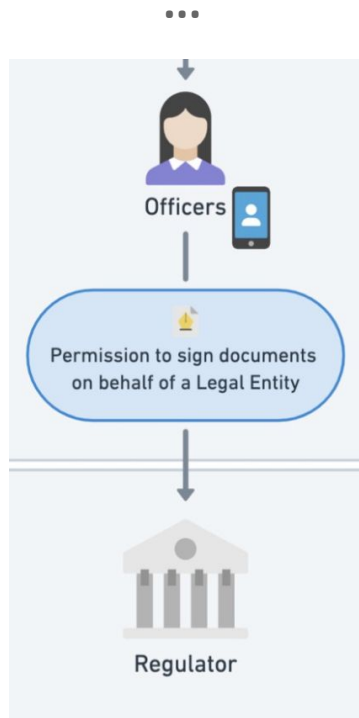
- Example: KYC (for individuals and businesses)
 - Verification of individuals acting on behalf of an organization
- Global Legal Entity Identifier Foundation (GLEIF)
 - Legal Entity Identifier (LEI)
 - unique, 20-digit identifier for companies
 - Goal: reduce cost/complexity of business verification
- Consensys/uPort & GLEIF prototype:
 - Verification of a person acting in an official role



1. GLEIF accredits an LOU, then issues it a VC allowing it to issue LEIs

2. LOU verifies a company's legal entity data, then issues it a VC with LEI code and information about its corporate officers

3. The company issues VCs to persons acting in official roles



4. Corporate officers can use their role credentials to sign/submit regulatory filings

5. Regulators can view/verify the signatures of submitted documents

CTDL Example

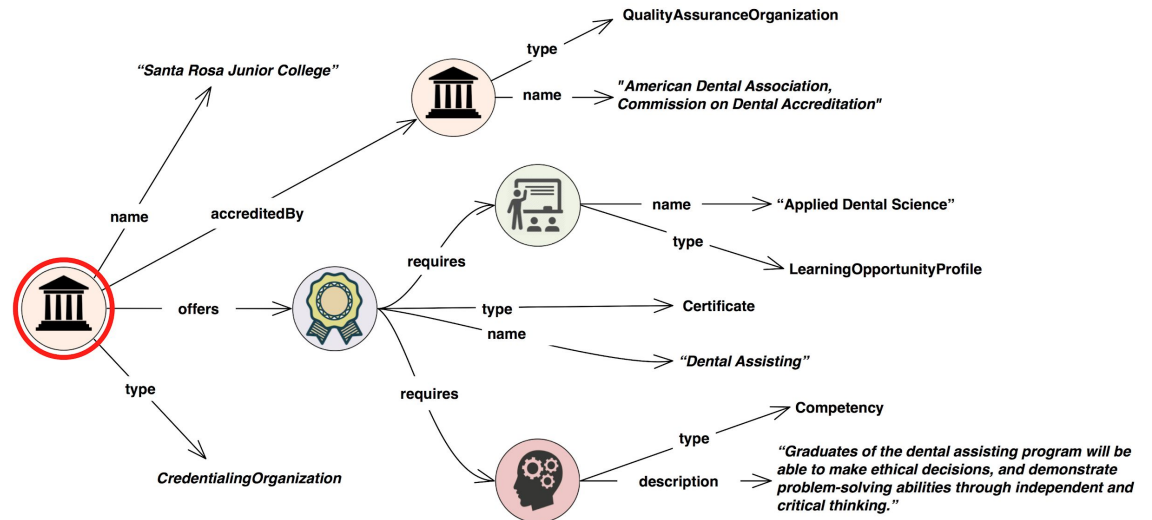
<https://credreg.net/ctdl/handbook#basics>

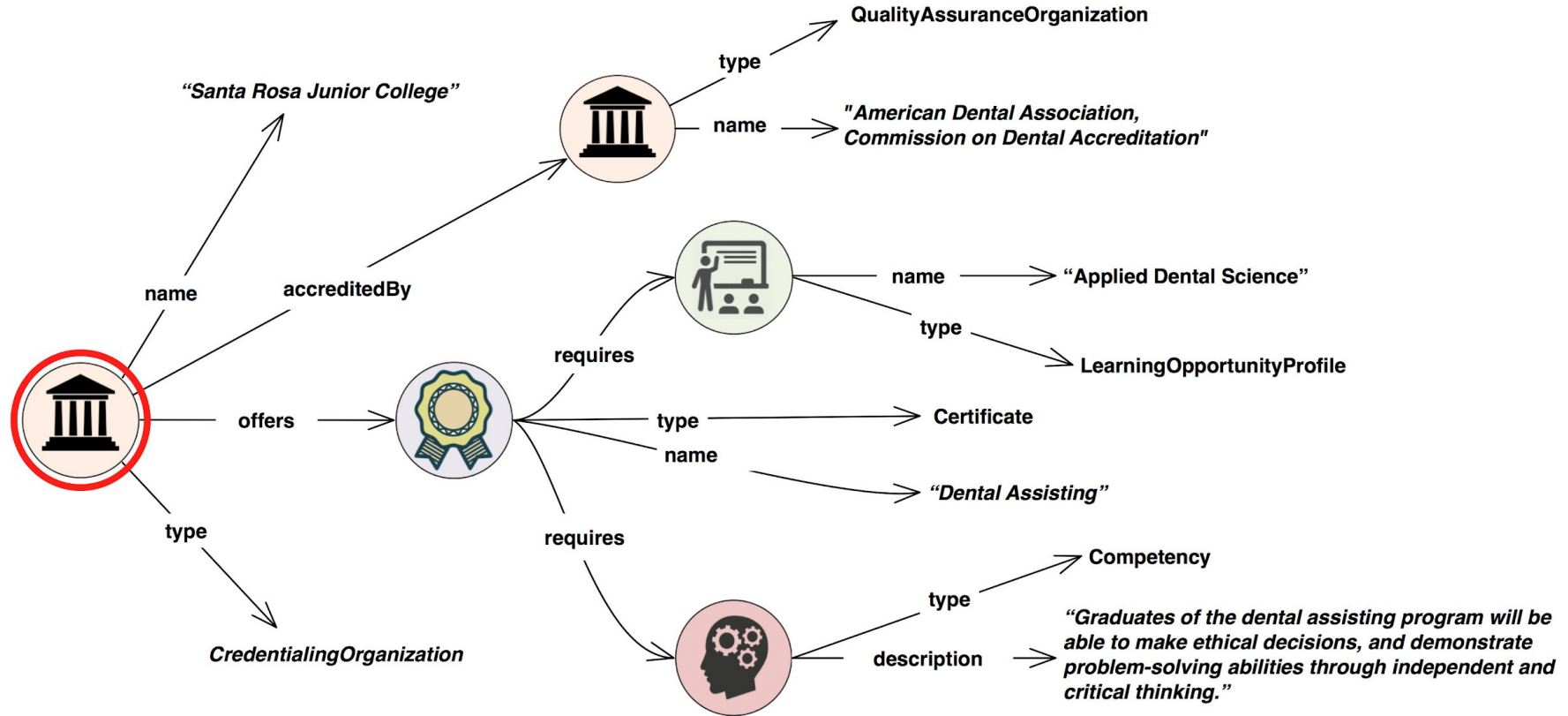
Subject	Predicate	Object
Thing-1	type	CredentialOrganization
CredentialOrganization	name	Santa Rosa Junior College
CredentialOrganization	offers	Certificate
CredentialOrganization	accreditedBy	QualityAssuranceOrganization
Thing-2	type	Certificate
Certificate	name	Dental Assisting
Certificate	requires	LearningOpportunityProfile
Certificate	requires	Competency
Thing-3	type	LearningOpportunityProfile
LearningOpportunityProfile	name	Applied Dental Science
Thing-4	type	Competency
Competency	competencyText	Graduates of the dental assisting program will be able to make ethical decisions and demonstrate critical thinking.
Thing-5	type	QualityAssuranceOrganization
QualityAssuranceOrganization	name	American Dental Association, Commission on Dental Accreditation.

Three-part assertions about a dental assisting certificate:

1. Credentialing Organization
2. Credential (Certificate)
3. Required Learning Opportunity Profile
4. Required Competency
5. Quality Assurance Organization

Subject	Predicate	
Thing-1	type	CredentialOrganization
CredentialOrganization	name	Santa Rosa Junior College
CredentialOrganization	offers	Certificate
CredentialOrganization	accreditedBy	QualityAssuranceOrganization
Thing-2	type	Certificate
Certificate	name	Dental Assisting
Certificate	requires	LearningOpportunityProfile
Certificate	requires	
Thing-3	type	
LearningOpportunityProfile	name	
Thing-4	type	
Competency	competencyTe:	
Thing-5	type	
QualityAssuranceOrganizati on	name	





See more

<https://github.com/w3c-ccg/vc-ed-models/issues/4>

Open Badges Accreditation Extension

Issuer extension

Use case: An issuer wants to include detailed information about an accrediting organization as it pertains to the program or the badge

```
"extensions:IssuerAccreditation": [{
  "@context":"https://purl.imsglobal.org/spec/ob-accred/v1p0/context/",
  "type": ["Extension", "extensions:IssuerAccreditation"],
  "name": "Northwest Commission on Colleges and Universities",
  "contactInstructions": "Call or email the Commission Office",
  "url": "http://www.nwccu.org/index.htm",
  "address": {
    "streetAddress": "8060 165th Ave. NE, Suite 100",
    "addressLocality": "Redmond",
    "addressRegion": "WA",
    "postalCode": "98052"
  },
  "description": "The Northwest Commission on Colleges and Universities (NWCCU) is an in
  "areaServed": "The US seven-state Northwest region of Alaska, Idaho, Montana, Nevada,
  "accreditationDate": "2010-09-01",
  "educationalSector": "Postsecondary"
},
{
  "@context":"https://purl.imsglobal.org/spec/ob-accred/v1p0/context/",
  "type": ["Extension", "extensions:issuerAccreditation"],
  "name": "Commission on Accreditation of Allied Health Education Programs",
  "contactInstructions": "Contact Kathleen Megivern, Executive Director, megivern@caahep
  "url": "http://www.ncacasi.org",
  "address": {
    "streetAddress": "25400 US Highway 19 N, Suite 158",
    "addressLocality": "Clearwater",
    "addressRegion": "FL",
    "postalCode": "33763"
  },
  "description": "CAAHEP is the largest programmatic accreditor in the health sciences f
  "accreditationDate": "2014-04-01",
  "educationalSector": "postsecondary"
}
}]
```