



Digital Tools



Isobel Mair School and Family Centre



parentsportal.scot



Isobel Mair School and Family Centre use a number of different digital tools to share and store information, to communicate news with parents, carers and pupils and for online learning.



Glow is Scotland's digital learning environment. It supports learning across the whole curriculum. Glow is not just one place or platform.

Logging into Glow gives learners, parents and carers access to a number of different web services for example Microsoft Office 365 (and Microsoft Teams) Google Classrooms and SWAY. All pupils have their own Glow account and their class work will be stored on their onedrive. You will need their username and password to sign in.

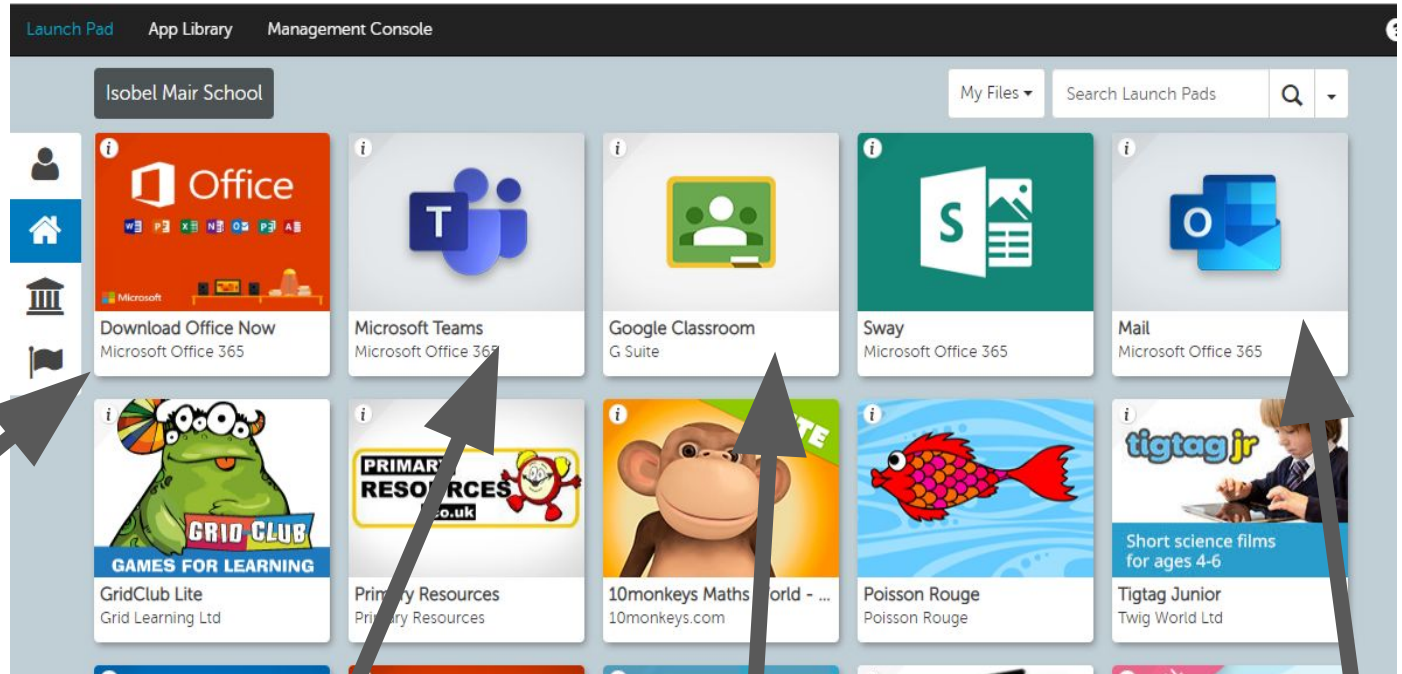
If you have problems logging into Glow, please contact the school or family centre.

schoolmail@isobelmair.e-renfrew.sch.uk

Log on to glow: - <https://sts.platform.rmunify.com/account/signin/glow>

Good to know

Microsoft Office can be downloaded onto pupil devices at home. This could be on up to 5 PC s or 5 mobile devices and can be used during their time at school.

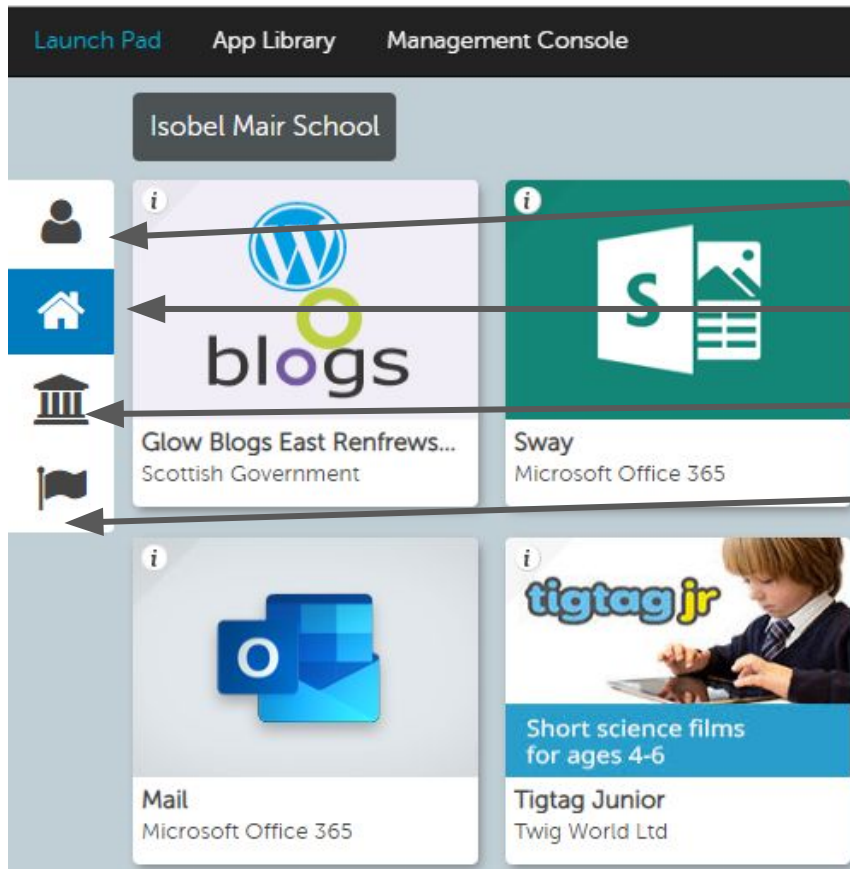


Click to access Teams

Click to access
Google Class

Click to access
Glow Mail

When you log in, you will see your child's Launch Pad (or dashboard). There are a number of options that are available to you and your child through buttons on this launch pad. These may differ depending on your child's class or stage.



Once you have logged on you will see 4 tabs on the side of your dashboard.

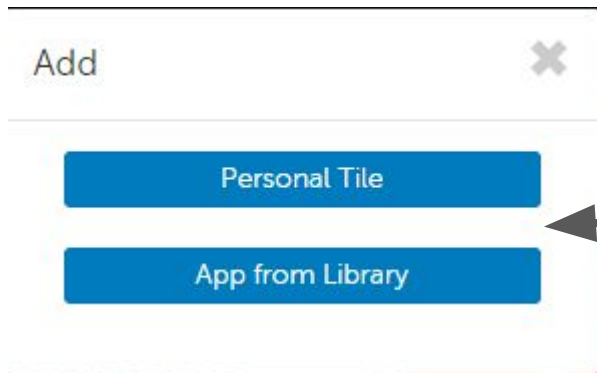
- My Launch Pad - store your own favourite websites here for easy access
- Isobel Mair School Launch Pad
- East Renfrewshire Council launch pad
- Scotland Launch Pad

Launch Pads provide links to all Glow services, resources and other, externally hosted content.

If you select my Launch Pad you can add other apps from the library or you can add favourite URL/websites to your launch pad.

Click on add



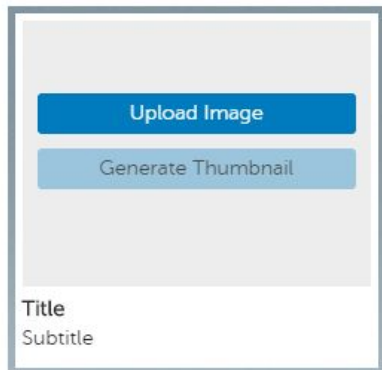


Click to add a new app from library or add your favourite URL onto your personal tile.

Add Personal Tile

Use this page to add a tile to your personal Launch Pad. This can point to anything accessible by a browser.

Required fields are denoted by an asterisk (*). You must generate a thumbnail or upload an image to create the tile.



Title *

Address (URL) *

[Check URL](#) [Generate Thumbnail](#)

Subtitle

You can add the URL to a favourite website and this make is easier for your child to access favourite websites.



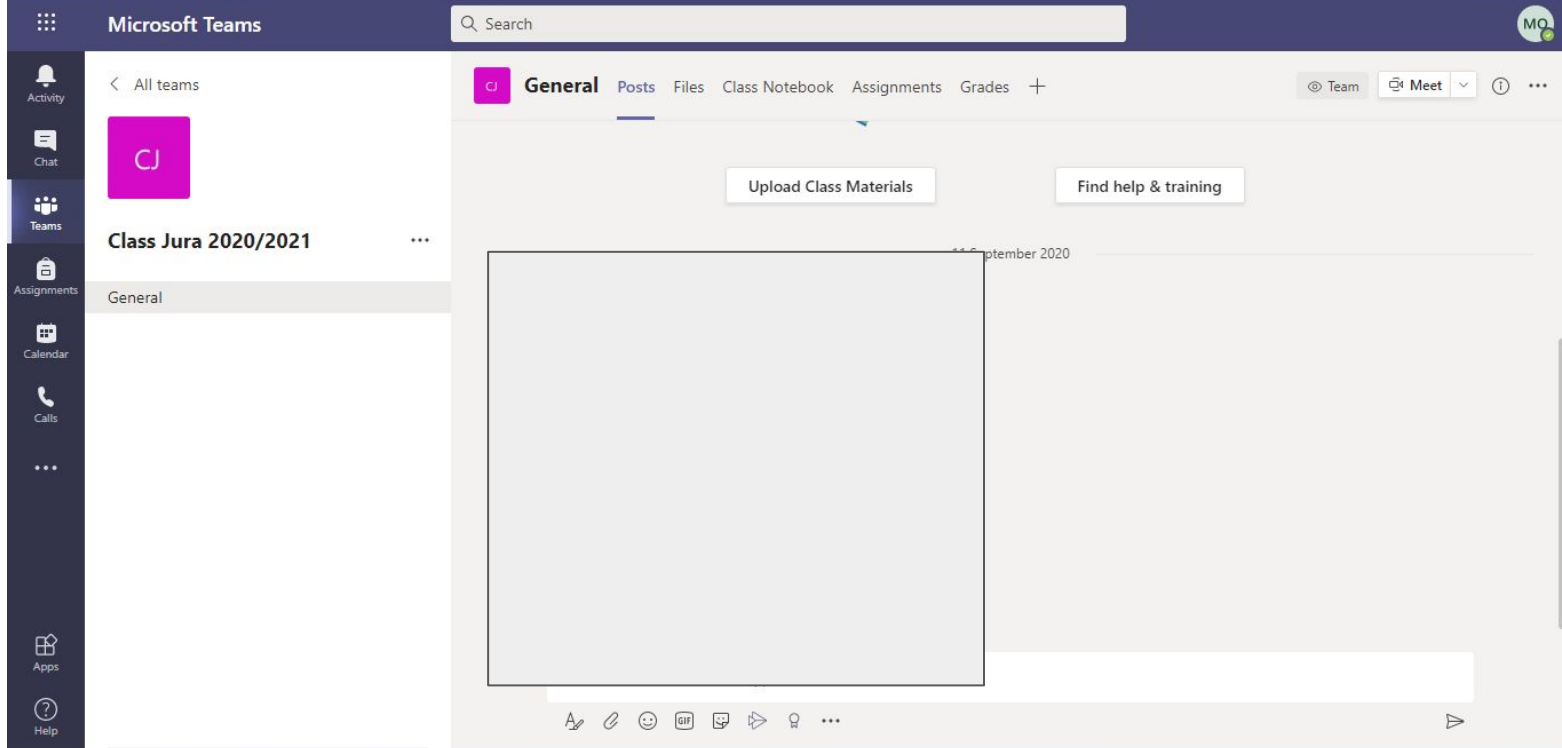
MICROSOFT TEAMS

Microsoft Teams is an all in one digital learning platform that allows users to chat (either via video or by messaging) and to share documents and other resources with a group. Teams can also be a shared space for collaborative word documents /powerpoint presentations between pupils and class staff..

If your child's class uses Microsoft Teams, this can be accessed through the Microsoft Teams tile on the launch pad within your child's Glow environment (see above).

Class staff may share homework assignments, news, pictures or videos through the Class Team.

Pupils or parents/carers can also upload completed homework or share news/pictures/video with the class teacher.



This is how the class Teams page will look.

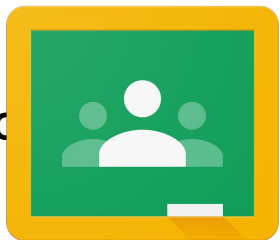
Posts - this is where you can use the chat facility.

Files - This is where you see any class work.

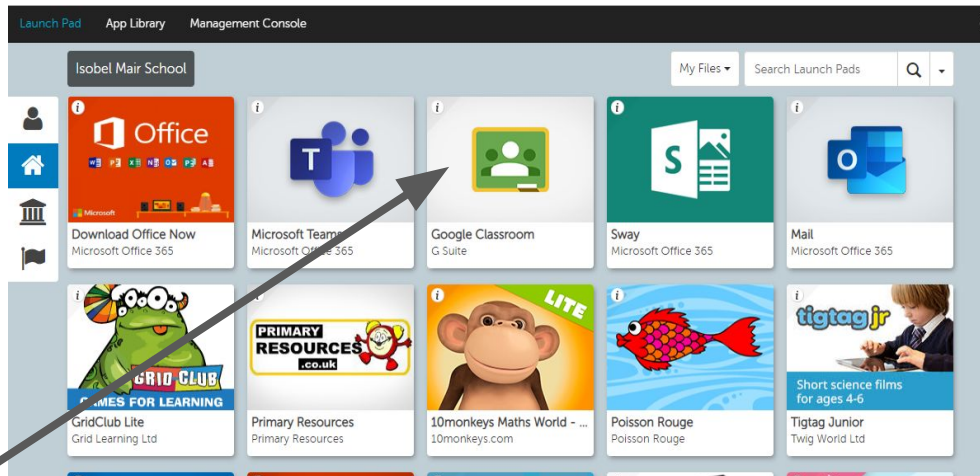
Class Notebook is the collaborative area,

Assignments - you will find any homework here.

Meet - is the video chat facility



GOOGLE



Google Classrooms is an online classroom space.

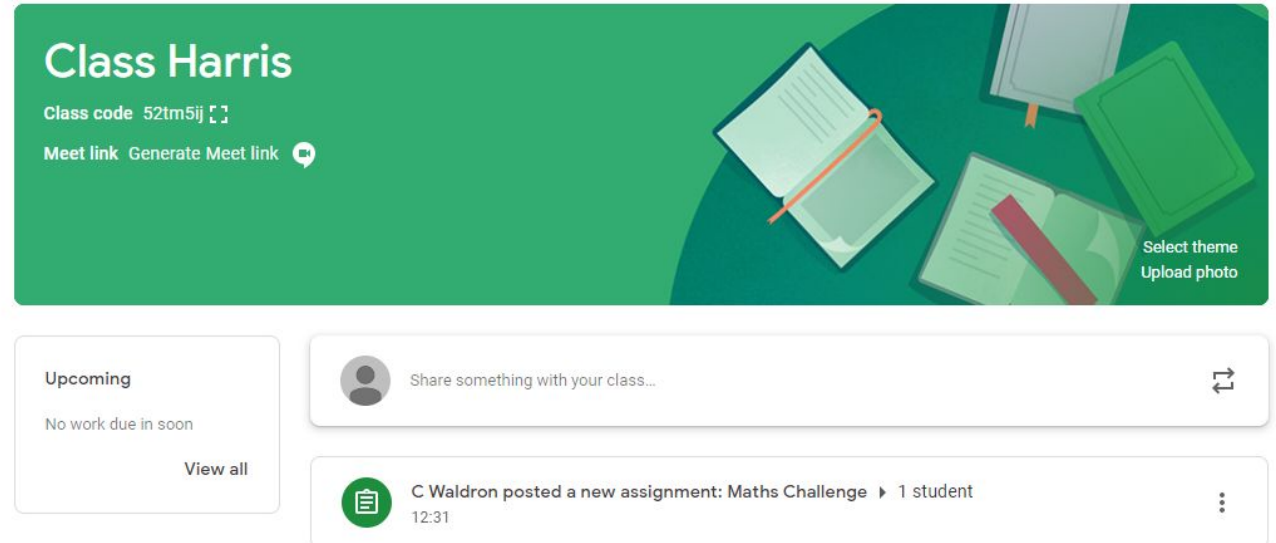
If your child's class uses Google Classrooms, this can be accessed through the tile on the launch pad within your child's Glow environment (see above).

Class staff may share homework assignment, news, pictures, online links or videos with class. Assignments can be set for individual pupils or as a group. Likewise, you or your child can upload completed homework assignments, news or pictures to share with their class.

Pupils can also use Google docs and google slides as part of the tools within G Suite.

Your child's Google class page will look similar to this.

The class teacher will have sent a class code for you to join



Stream - you will find class announcements here and use the chat facility

Classwork - you will find all your class work/assignments

People - a list of staff and pupils in the google class

Meet link - staff can generate a video meet link.



SWAY

Sway is an online presentation tool.

All parents and carers should have received a link for their child's class in August. You should **save and bookmark this link. This is a live document and will be updated daily.**

In Isobel Mair School we use Sway to share School Newsletters and Class news. Class news is currently shared through a unique link that has been shared via school mail. Class staff might also have also shared this link on their Google Class and Teams pages.

This link will be used until class staff send a new one (due to maximum of 300 photos) A new link will then be shared with you. Please remember to save and bookmark this link

Sway is hosted on the cloud, which means that it uses very little data on your device, even when a lot of images/video have been shared with you.

Please get in touch with school if you do not have the link for your child's Class Sway newsletter.

School App for Parents

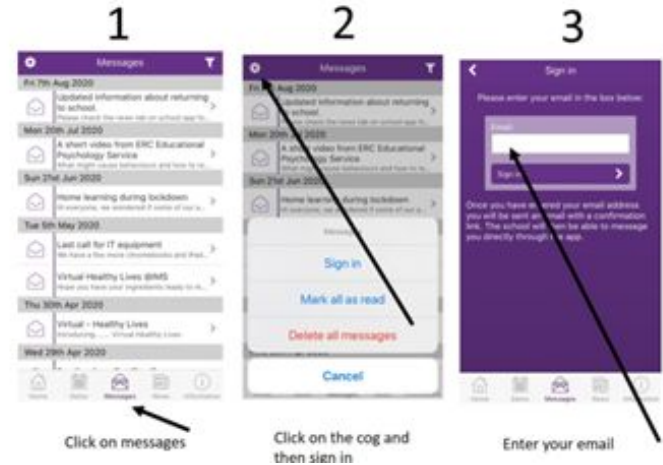
School App for Parents is another way that IMS uses to keep in touch with parents and carers. The app can be downloaded to your smart phone from your usual app store.

You must verify your email to allow class staff to send you a private message. This is needed even if you used the app before the current academic year.

Access to a range of resources (see below) can be found by clicking the information button at the bottom of the screen. You can call and email the school through the app. Your email will be directed to the school office in the first instance. You cannot email your child's class directly through the app.

Some of the Information available on the app:

- Calendar
- Messages group and private
- News
- Email the school
- Call the school
- Holiday List
- Parent Portal login



Information

Email The School >

School Calendar August 20 >

Holiday List 2020 - 21 >

Parent Portal Login >

Call The School >

School Diary >

Health and Wellbeing Administration >

How to access GLOW resources from home >

School is closed Social Story >

A useful walk through explaining how to use Glow can be found in the information section of the app.

You may also log into Parent Portal (see below) in this section.

You can find the **calendar of school events** by clicking the **dates button** at the bottom of the screen in the app.

IMS twitter feed posts also appear in the News section of the app (again, click on the News button to access).

School Diary email can be accessed via the app

schooldiary1@isobelmair.e-renfrew.sch.uk

Information

Glow User guide for parents >

GLOW Log in >

School Handbook >

Home Learning Links >

Home Learning Website >

Singing Hands >

Autism School Closure Toolkit >

Cbeebies >

Education City >



Home



Dates



Messages



News



Information



Home



Dates



Messages



News



Information

Parents Portal

East Renfrewshire Council is now using [Parentsportal.scot](https://www.eastrenfrewshire.gov.uk/parentsportal) to share and store individual information about your children at school.

At IMS this will enable the annual data check to be completed online in future. It will also allow you to update your own details as well as your linked child's details at any time.

You can log into Parentsportal via the information button in School App for Parents.

You will need to be verified before you can start using the service.

Full information about how to register for Parents Portal can be found at:

<https://www.eastrenfrewshire.gov.uk/parentsportal>