

Parts of a Flower and their Functions

Male part - Stamen

The stamen has two parts

- **Anthers** - Pollen producing part
- **Filaments** - They hold up the anthers

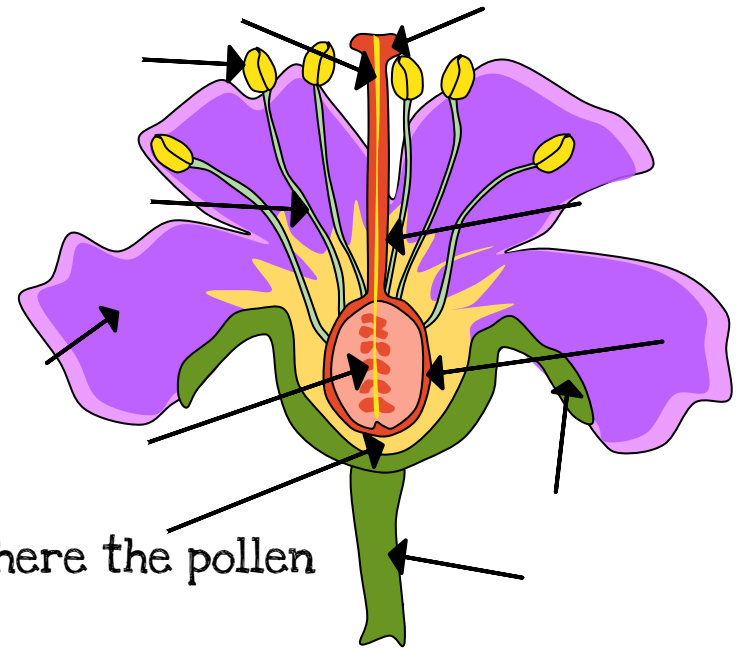
Female part - Pistil

The pistil has three parts

- **Stigma** - Sticky surface at the pistil's top, where the pollen germinates
- **Style** - Holds up the stigma
- **Ovary** - Contains the ovules
- **Ovules** - Become the seed after fertilization by pollen

Other Parts of the Flower

- **Petals** - Usually bright, to attract pollinators
- **Sepals** - Protect the flower bud when it is developing
- **Receptacle** - Portion of the stalk with the flower structure
- **Peduncle** - Flower stalk



PARTS OF A FLOWER

Stamen

Pistil

Pollen tube

Stigma

Anther

Style

Filament

Ovary

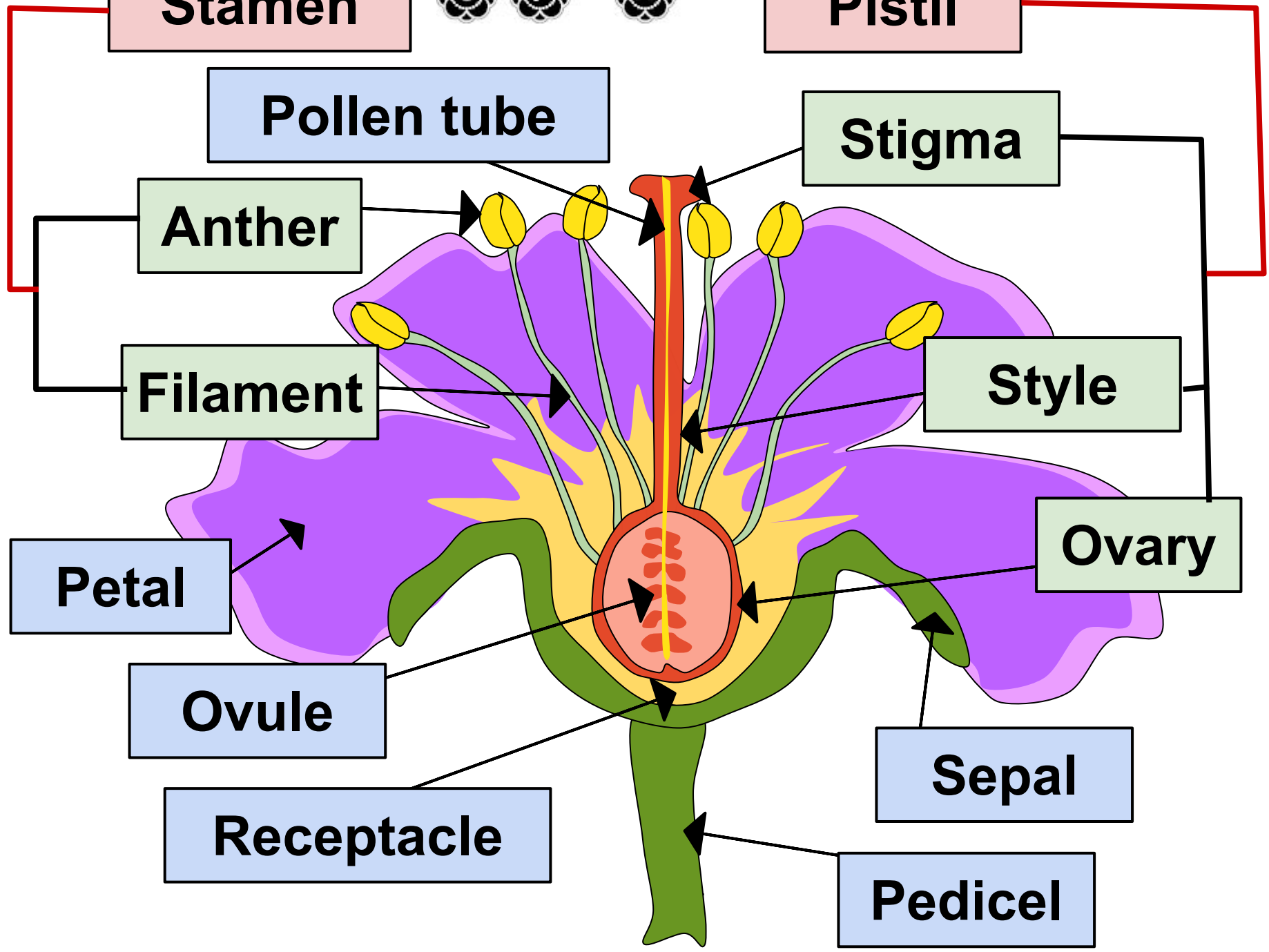
Petal

Ovule

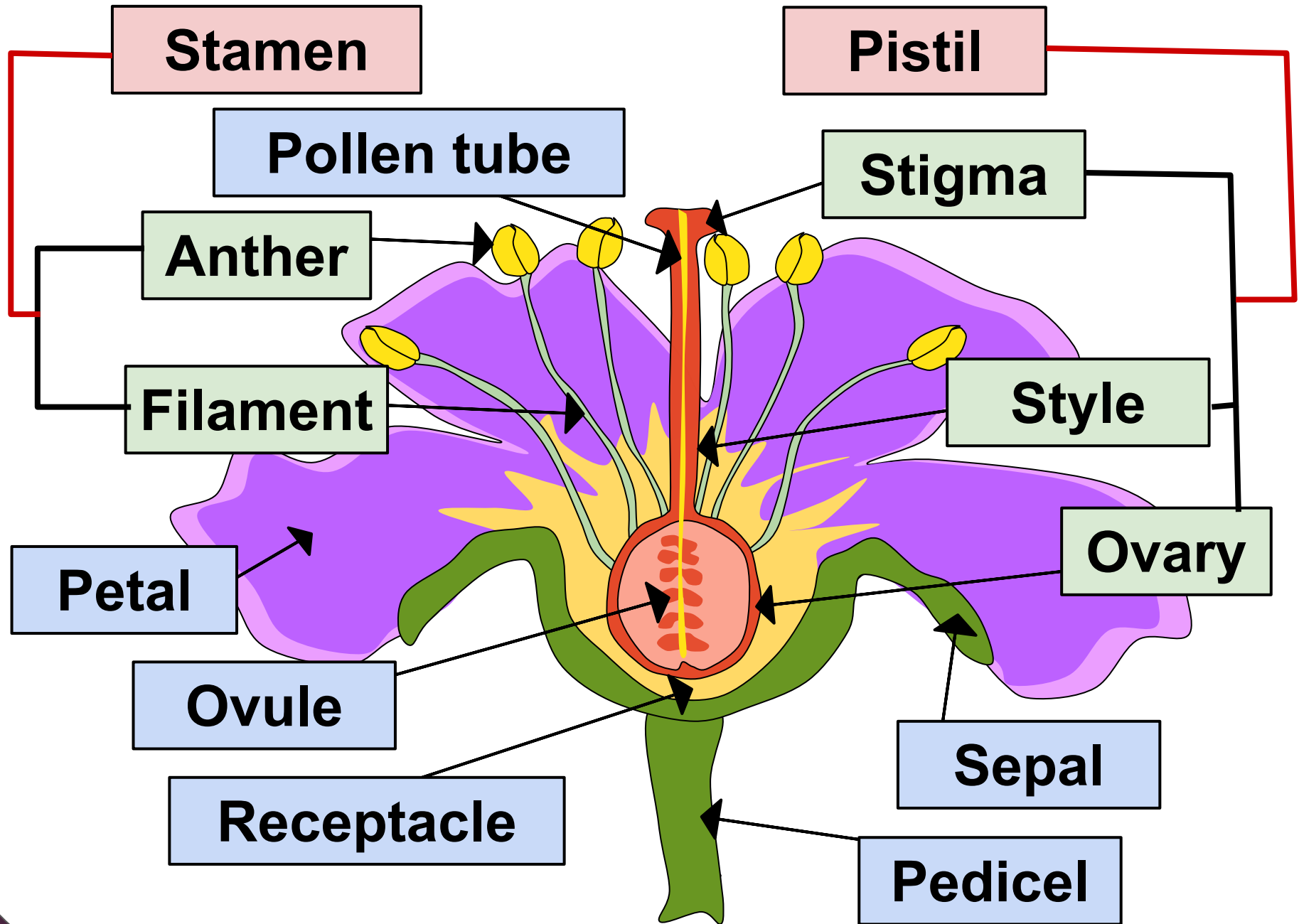
Sepal

Receptacle

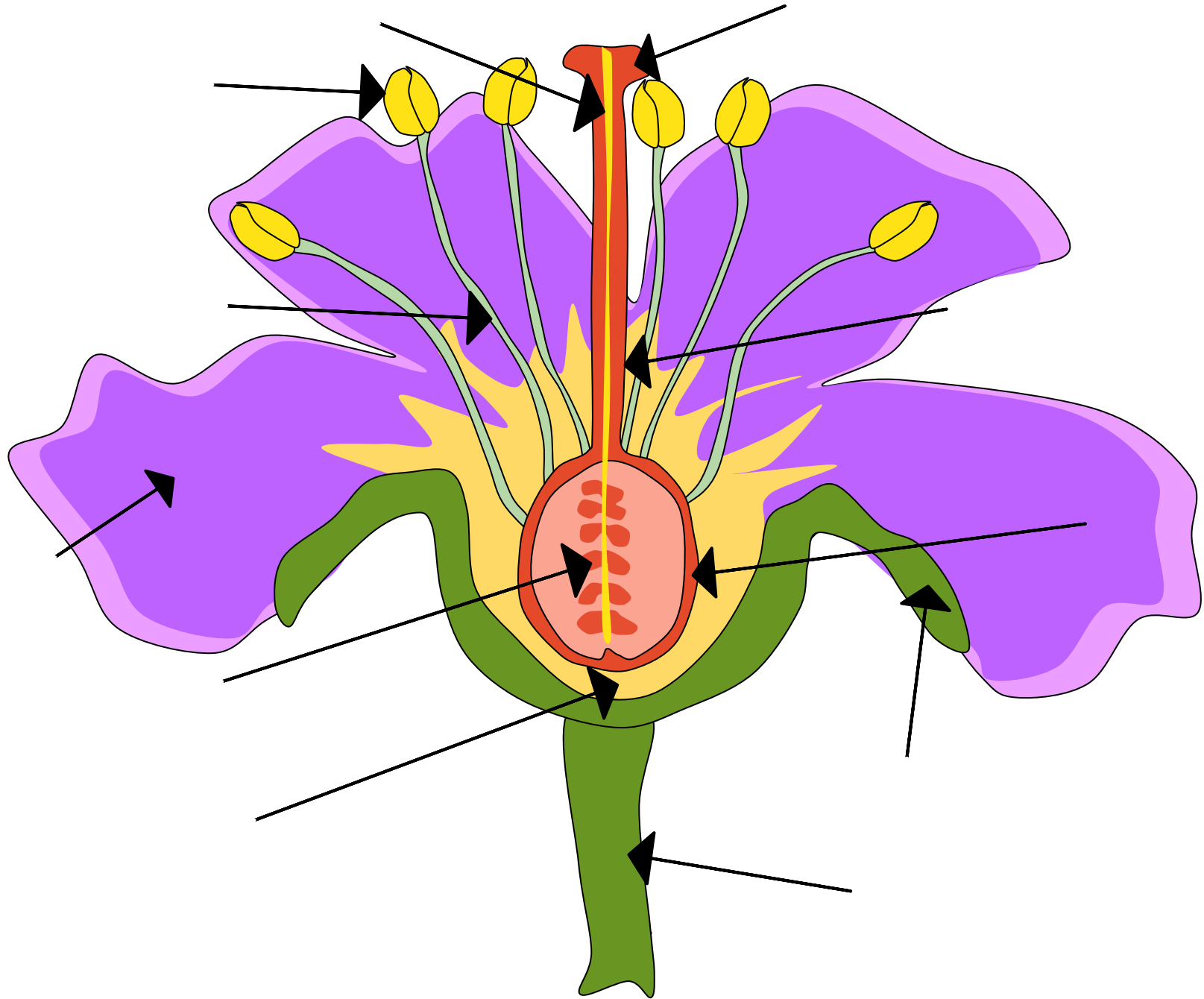
Pedicel



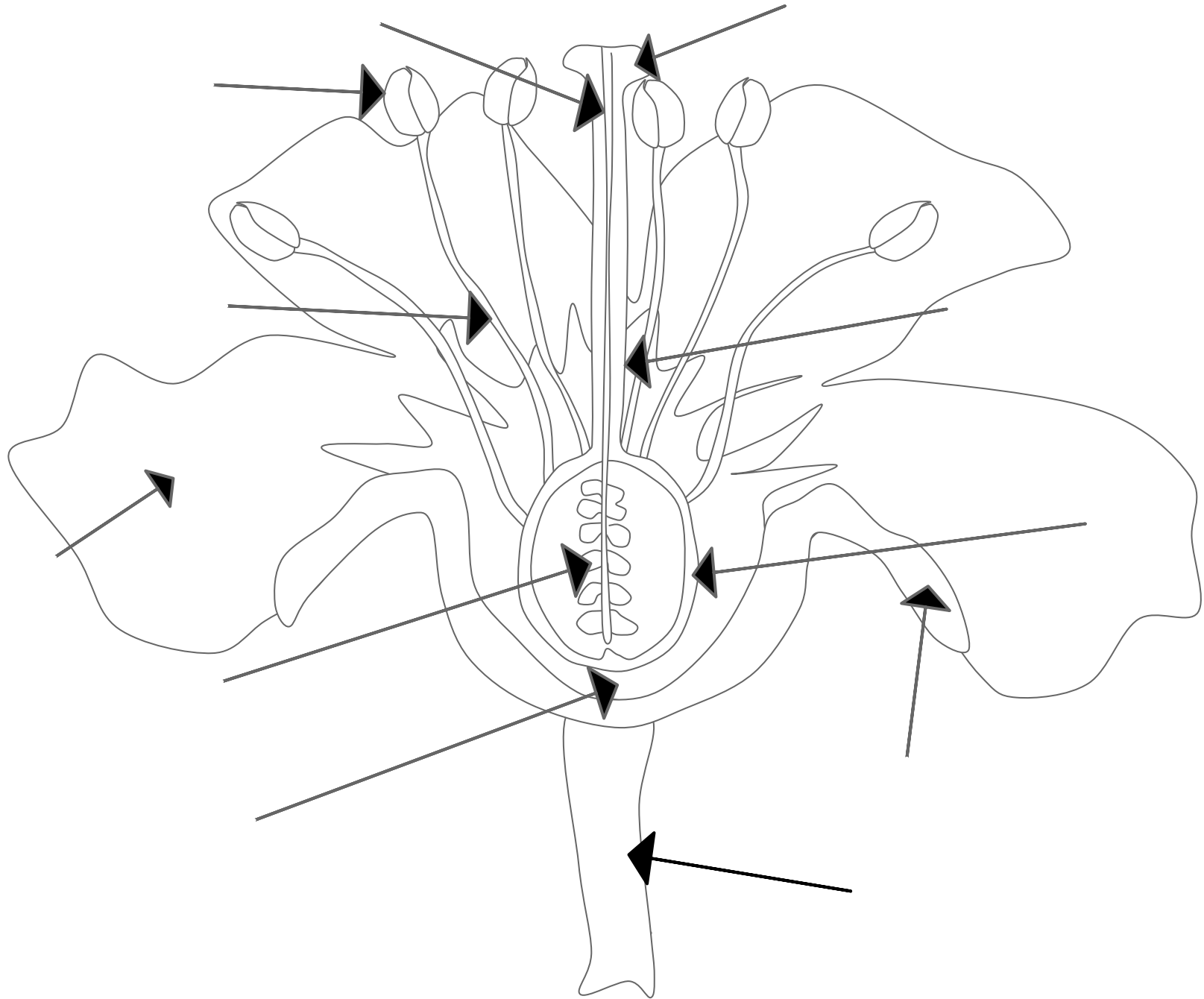
Parts of a Flower



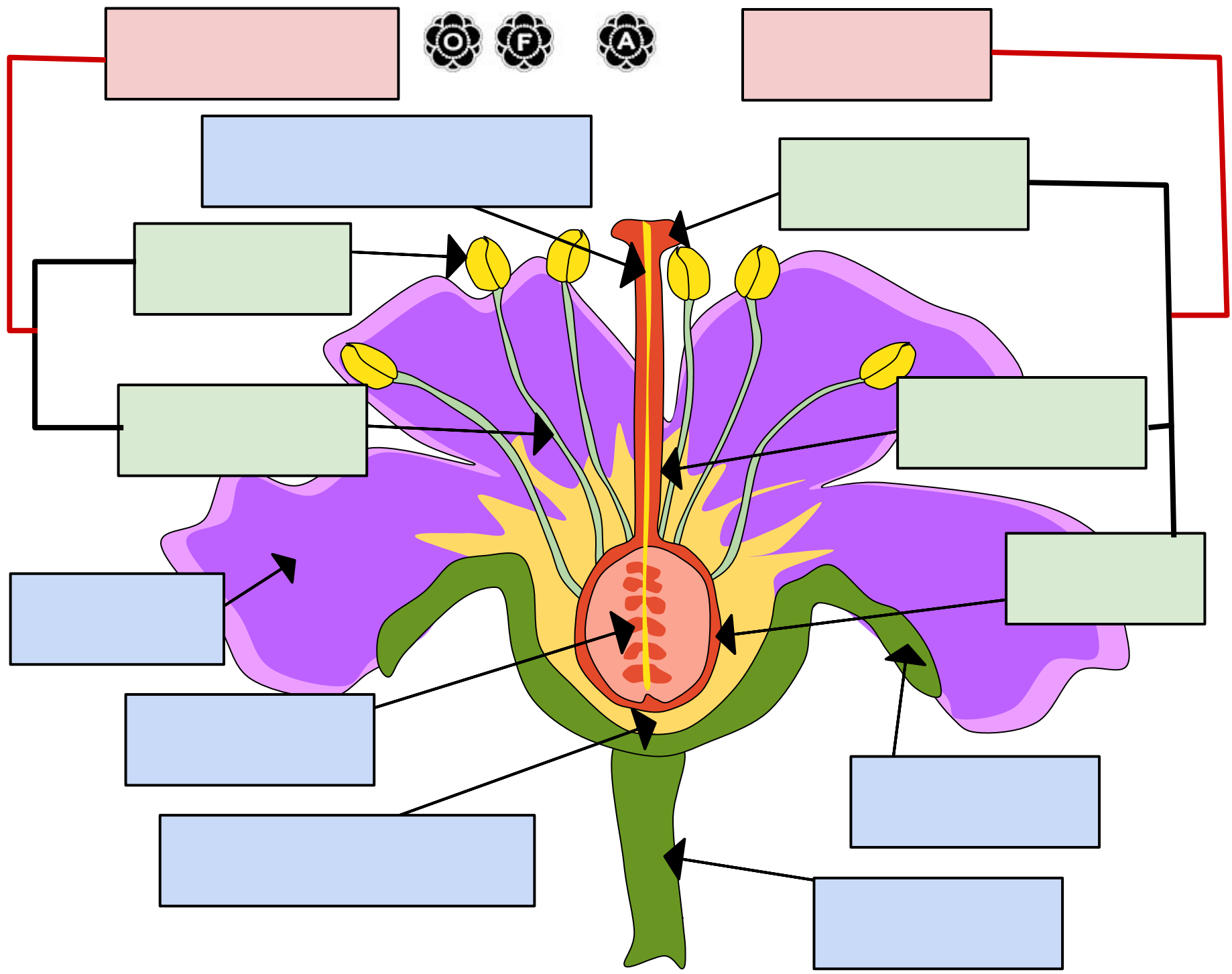
PARTS OF A FLOWER



PARTS OF A FLOWER

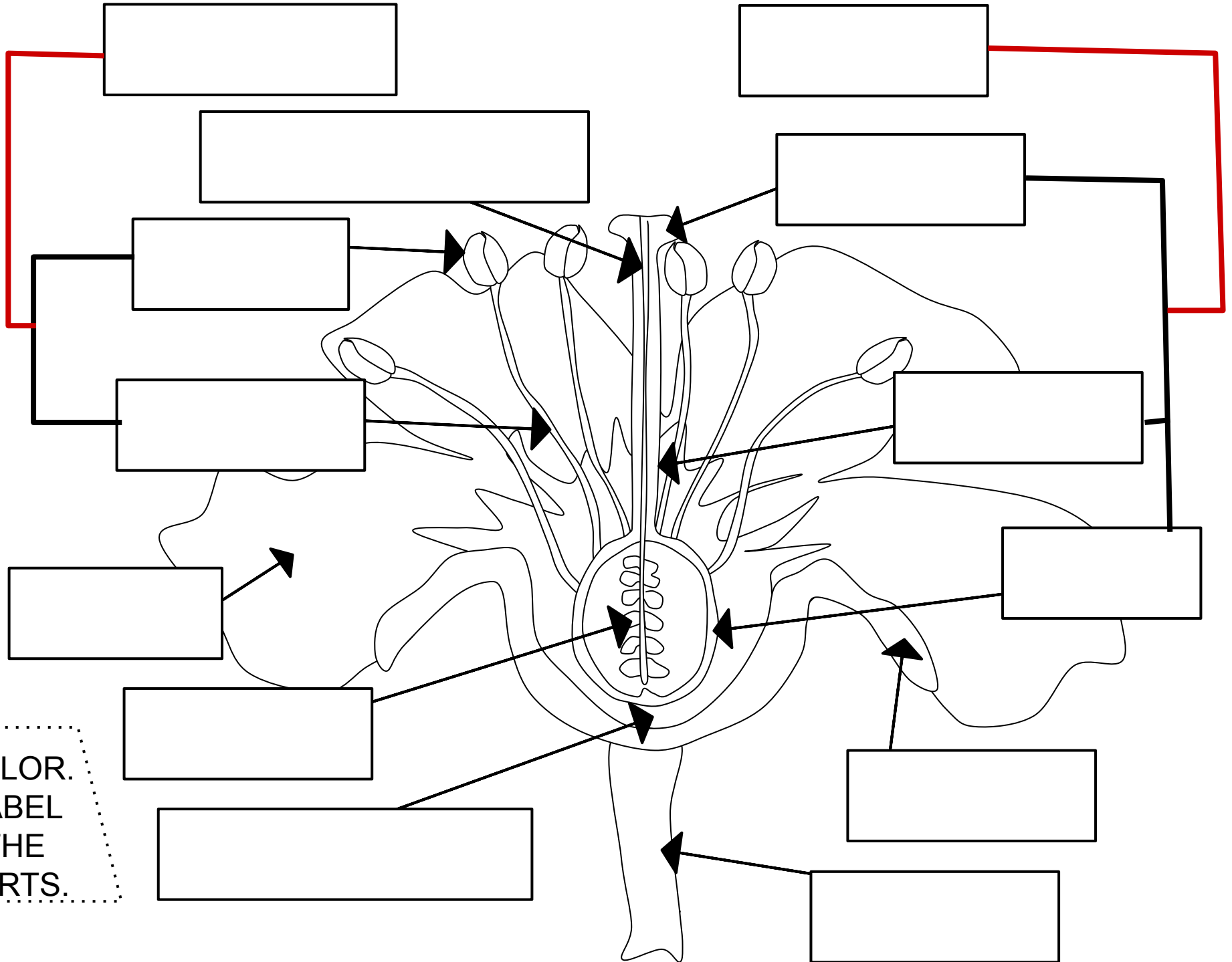


PARTS OF A FLOWER



NAME: _____

PARTS OF A FLOWER

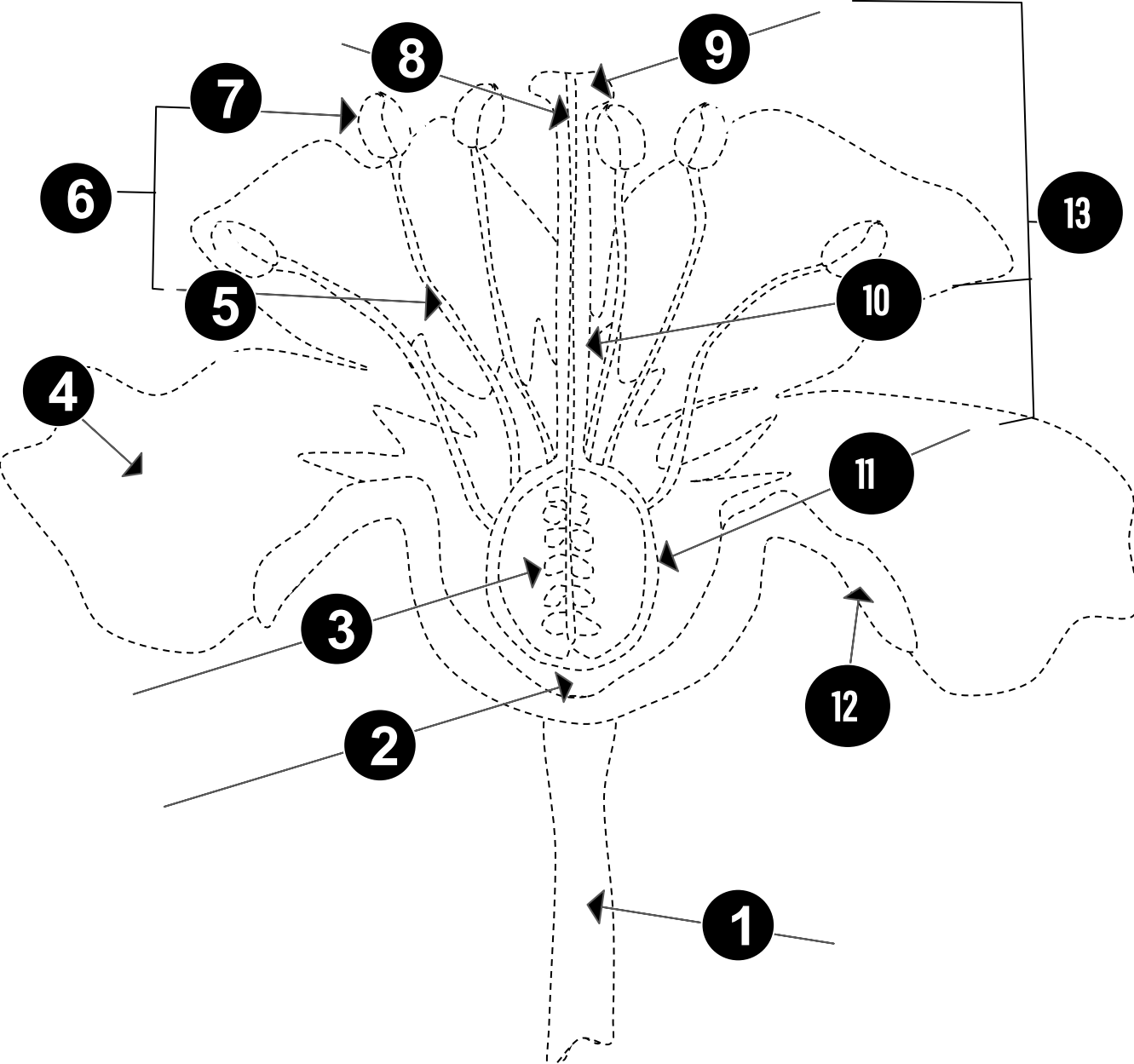


COLOR.
LABEL
THE
PARTS.

NAME: _____

DATE: _____

PARTS OF A FLOWER



Color. Label the parts of a flower.

1. _____
2. _____
3. _____
4. _____
5. _____
6. _____
7. _____
8. _____
9. _____
10. _____
11. _____
12. _____
13. _____

NAME: _____

Draw your favorite flower.

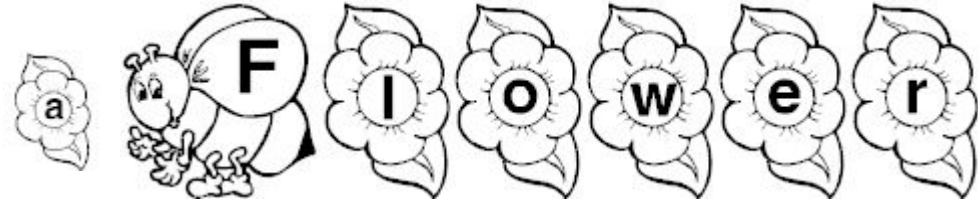
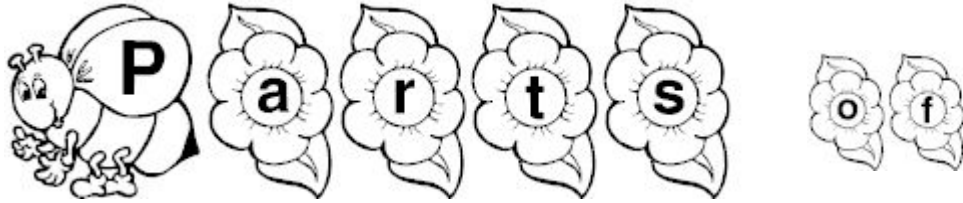


My favorite flower is _____

NAME: _____

DATE: _____

MATCH. CONNECT THE STARS.



Male part of a flower

Female part of a flower

Pollen producing part

They hold up the anthers

Sticky surface at the pistil's stop, where the pollen germinates

Holds up the stigma

Contains the ovules

Become the seed after fertilization by pollen

Usually bright, to attract pollinators

Protect the flower bud when it is developing

Portion of the stalk with the flower structure

Flower stalk



PETALS

SEPALS

RECEPTACLE

PEDICEL

STIGMA

STYLE

OVARY

OVULES

PISTIL

ANTHERS

FILAMENTS

STAMEN

NAME: _____

DATE: _____

Identify the parts of a flower.

Parts of a Flower

Male part of a flower	→	_____
Female part of a flower	→	_____
Pollen producing part	→	_____
They hold up the anthers	→	_____
Sticky surface at the pistil's top, where the pollen germinates	→	_____
Holds up the stigma	→	_____
Contains the ovules	→	_____
Become the seed after fertilization by pollen	→	_____
Usually bright, to attract pollinators	→	_____
Protect the flower bud when it is developing	→	_____
Portion of the stalk with the flower structure	→	_____
Flower stalk	→	_____

NAME: _____

DATE: _____

FUNCTION OF THE PARTS OF A FLOWER.



PETALS



SEPAL



RECEPTACLE



PEDICEL



STIGMA



STYLE



OVARY



OVULES



PISTIL



ANTHERS



FILAMENTS



STAMEN



ANSWER KEY

Parts of a Flower and their Functions

Many flowers have male parts and female parts.

Male part – Stamen

The stamen has two parts

- **Anthers** – Pollen producing part
- **Filaments** – They hold up the anthers

Female part – Pistil

The pistil has three parts

- **Stigma** – Sticky surface at the pistil's top, where the pollen germinates
- **Style** – Holds up the stigma
- **Ovary** – Contains the ovules
- **Ovules** – Become the seed after fertilization by pollen

Other Parts of the Flower

- **Petals** – Usually bright, to attract pollinators
- **Sepals** – Protect the flower bud when it is developing
- **Receptacle** – Portion of the stalk with the flower structure
- **Peduncle** – Flower stalk

If you find any errors
or you are unhappy for
any reason, please let
me know what I can do
to fix it. You can email
me at
ftsantomin30@gmail.com

**Thank
you!**