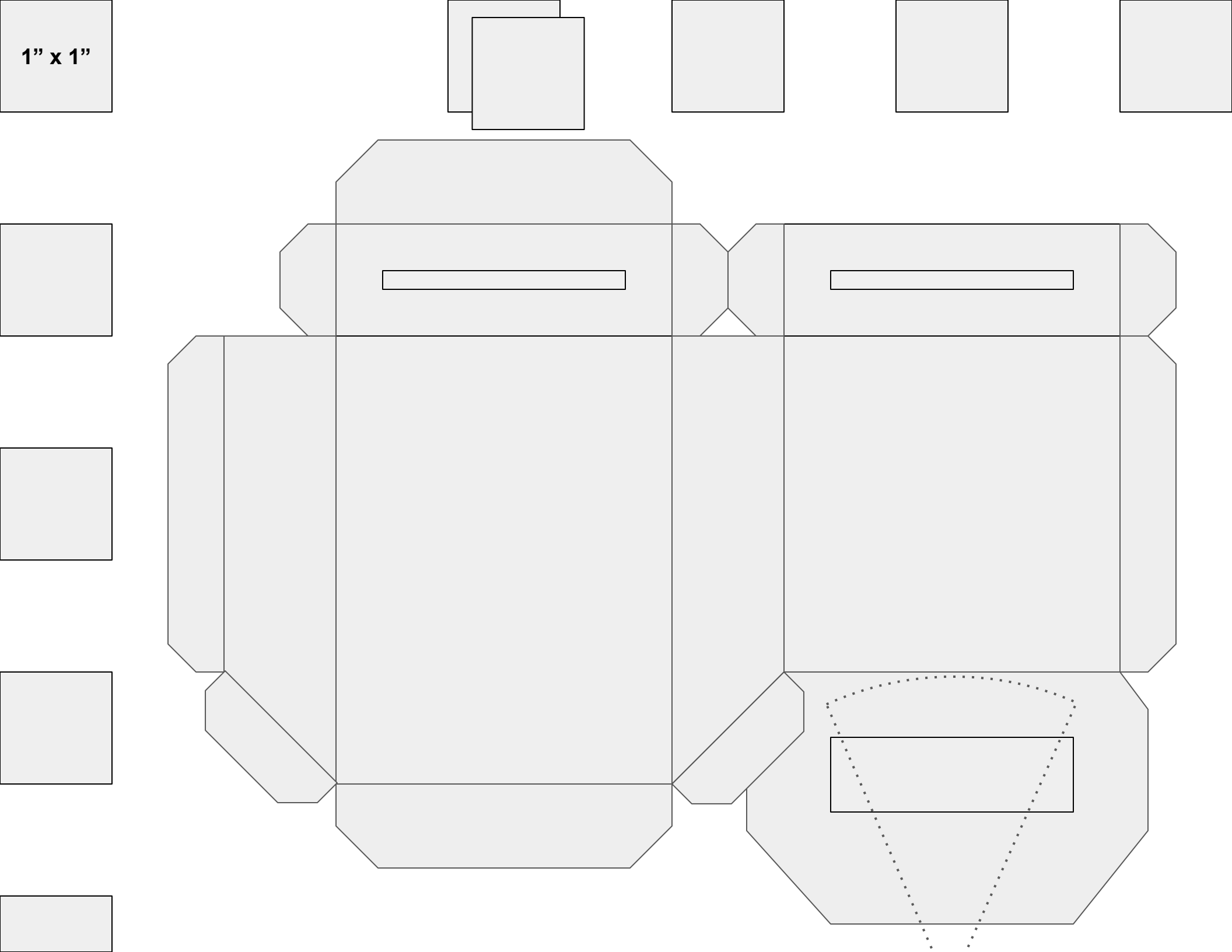


1" x 1"

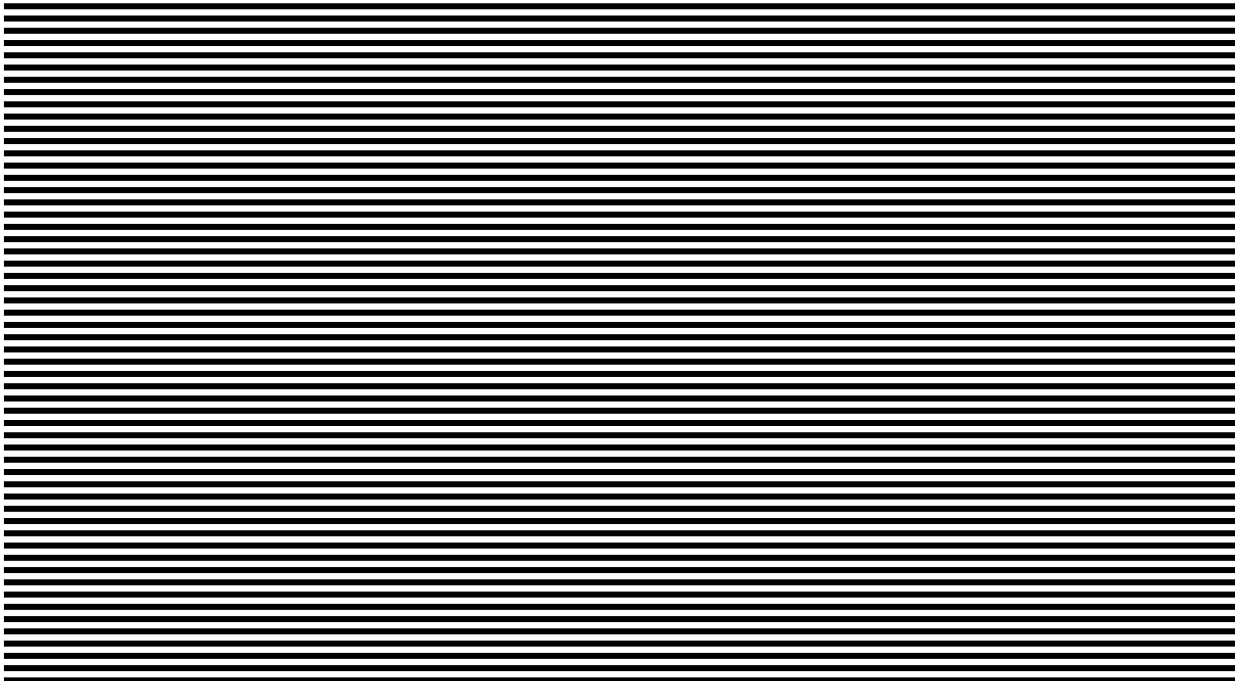
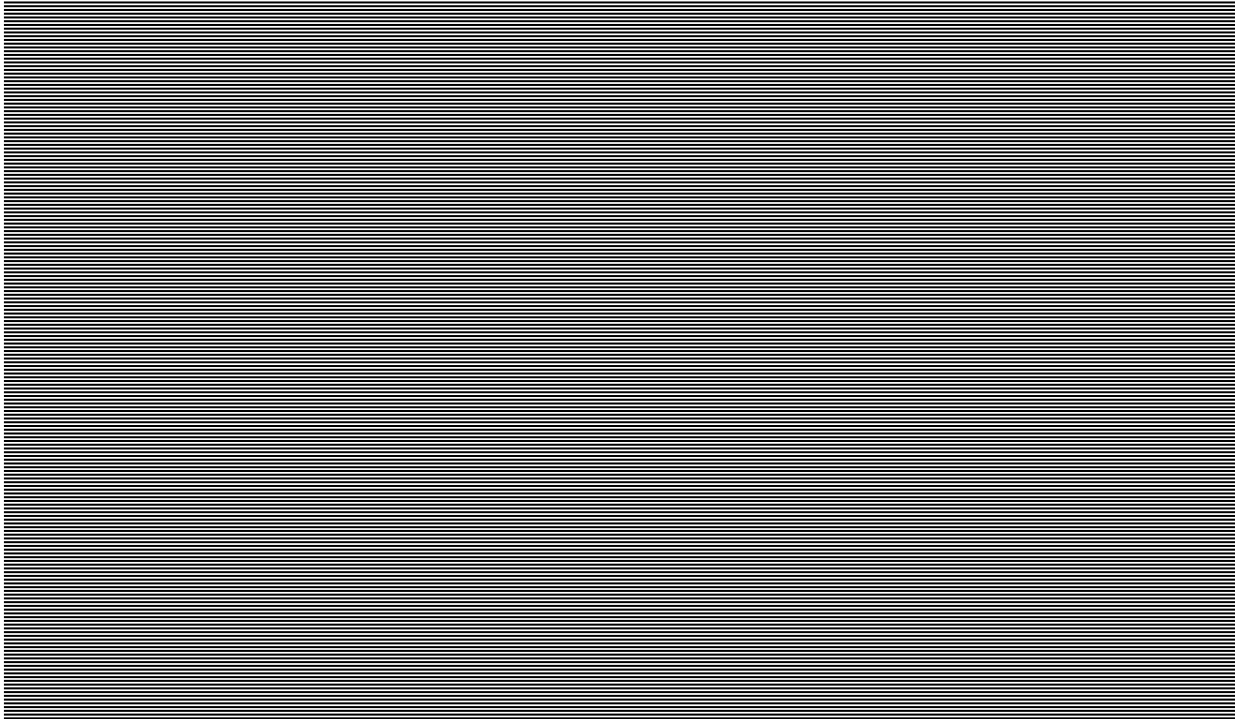




## Instructions

(also see online at link below)

1. Cut out the shape above (these may be grey if you have a printer)
2. Use a butter knife or utility knife to cut along the dotted lines
3. Fold over and cut out tabs **A2**, & **A3**
4. “Mountain” fold along dashed line
5. “Valley” fold along dashed line
6. Cut, peel, and attach DVD to the back of the spectrometer
7. Tape the slit over window with two pieces of tape if needed
8. Align tabs B, C, D & E and glue them together. Use black sticker dots to align tabs B, C, D & E



## Public Lab

<https://publiclab.org/notes/warren/05-04-2016/tweaks-to-foldable-mini-spectrometer-design>

This work is licensed under a Creative Commons Attribution-ShareAlike 3.0 Unported License and the CERN Open Hardware License 1.2.

