

Project 5 - Mimicking the Masters

By Ruman Khan Computer #16

Class AJS11-02 Table #3

Due May 17, 2019

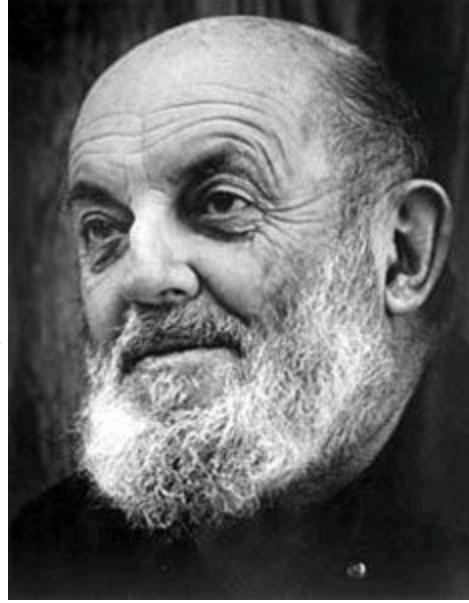
The Masters -

- **Ansel Adams**
- **Jerry Uelsmann**
- **Joe McNally**



Ansel Adams

Ansel Adams, born in February 02, 1902, was a photographer who teemed with problems affecting him when he was younger. An earthquake when he was younger breaking his nose and changing its shape, his family's wealth disappearing due to a financial panic in 1907, being dyslexic and having problems fitting in school, Adams life was not looking too good however support from his father and the loneliness influenced him causing him to find joy in nature. However his career didn't start as photographer but rather as a pianist where he later gave up the path for photography. He later joined Sierra club where he met his future wife, marrying her in 1928 and having 2 children. He was later elected as the clubs board of directors, well known as the artist of Sierra Nevada and the protector of Yosemite. However 1927 was the true year when he became a photographer with the help of Albert M. Bender who gave financial support and connections bringing his work to light. He also developed his own style where the clarity of the lens was the highest priority.



Ansel Adams had used many cameras in his live such as Hasselblad 500c Medium Format or the Deardorff 8x10 View Camera.



Hasselblad 500c Medium Format



Deardorff 8x10 View Camera



1. Can you identify the subject? which art element does it convey?

The subject is the plant and the art element and it conveys **texture** due to its sharp features.

2. How is it lit? what type of light do you see? hard, soft, transmitted or reflected light

The light is **hard light** as you can see deep and sharp shadows below the plant.

3. Where is the subject placed in the picture? what composition do you see?

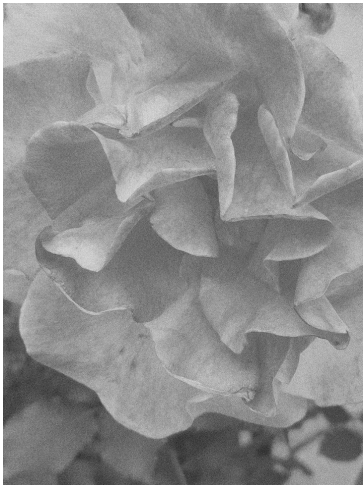
The subject is placed in the middle and it conveys **cropping** as the image seems very close up and the only thing in the image is the subject(plant).

4. How would you set the camera up for a similar shot?

ISO 400 , f/32, 1/250 sec, 35mm

5. What is the message you get from looking at the picture?

I get the message of nature as there is a plant with dirt around and nothing else showing the simplicity of nature.



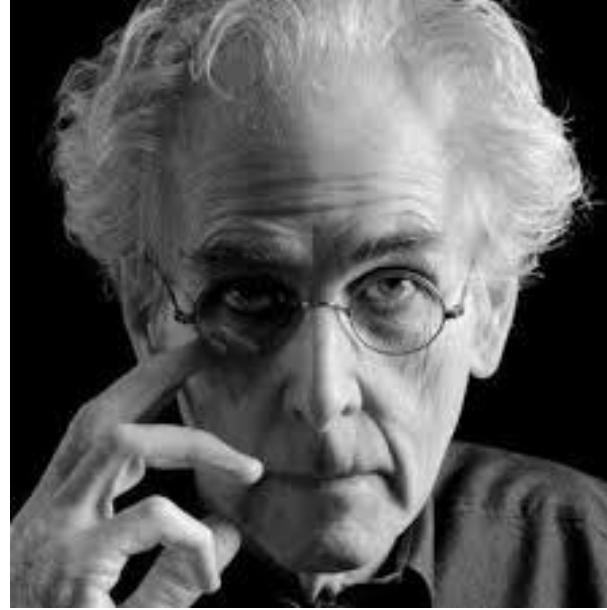
OnePlus ONEPLUS A6013
f/1.7 1/255 4.25mm ISO100

Genre - **Nature**

Jerry Uelsmann

Jerry Norman Uelsmann was born in Detroit, Michigan on June 11, 1934. He was the second child of an independent grocer. He attended public schools and was never a particularly diligent student. During his high school years he became interested in photography as a serious job. Uelsmann enrolled at the Rochester Institute of Technology in 1953.

He later on in his career of being a photographer became a pioneer in multilayered imagery. He used several negatives in images to create landscapes that would be otherwise impossible. These include a house with roots coming out of the bottom, or a room with the ceiling replaced with a sky.

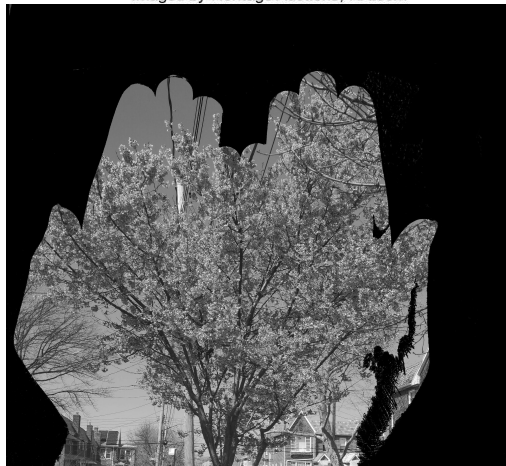


Jerry uelsmann used the Bronica first then switched to a Mamiya 7 and has since then had the Plaubel Makina and uses the T-MAX 400 film.





Imaged by Heritage Auctions, HA.com



OnePlus ONEPLUS A6013
f/1.7 1/100 4.25mm ISO1000

Genre - Surrealism

1. Can you identify the subject? which art element does it convey?

The subject is the house/person in hands and the art element it conveys is shape due to the hand outline and everything inside.

2. How is it lit? what type of light do you see? hard, soft, transmitted or reflected light

The lighting is soft light as the lighting is very even and uniform throughout the image and is probably lit by sunlight.

3. Where is the subject placed in the picture? what composition do you see?

The subject is placed in the middle and it conveys framing as the subject is framed inside of a hand outline.

4. How would you set the camera up for a similar shot?

ISO 800, f/32, 1/250 sec, 18mm

5. What is the message you get from looking at the picture?

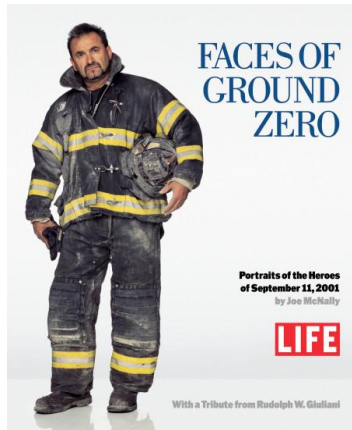
I get the message of surrealism with the objects such as the sky being the floor and the house and sky being in the hand.

Joe McNally

Joe McNally, born in 1952 in New Jersey, is an American photographer, internationally acclaimed for his work. He completed his bachelor and graduate degree from Syracuse University and lives in Ridgefield, Connecticut.

He is a type of photographer that bridges the gap between photojournalism and advertising working with companies such as Sony, ESPN, The New York Stock Exchange and others.

He however is best known for his series “Faces of Ground Zero - Portraits of Heroes of September 11th”



Nikon D500



Nikon D5 (XQD Version)

Cameras that he uses



Nikon Z6 Camera Body



Nikon Z7 with 24-70mm Lens



Nikon D850



1. Can you identify the subject? which art element does it convey?

The subject is the person and the art element it conveys is **shape** because of the person

2. How is it lit? what type of light do you see? hard, soft, transmitted or reflected light

The light is **hard light** as the image has defined shadows from a small light source..

3. Where is the subject placed in the picture? what composition do you see?

The subject is placed in the middle of the image and it conveys background due to the black **background** contrasting from the face.

4. How would you set the camera up for a similar shot?

ISO 1600, f/32 , 1/250 sec, 35mm

5. What is the message you get from looking at the picture?

I get the message of being serious and headstrong to all problems as the man looks very determined in the photo.



Genre - **Portraits**



OnePlus ONEPLUS A6013
f/1.7 1/17 4.25mm ISO1000

Conclusion

I learnt the various combination of creating a pictures from pioneers such as taking a clean photo of nature with nothing obstructing it highlighting the simplicity of nature, and in the case of Jerry Uelsmann, I learnt how to photoshop in order to get the same surreal effect that he got. The only easy part was taking the pictures however getting the settings correct and photoshopping was hard which brought to my attention how hard everything was back when the individuals didn't even have the same technology we had yet were able to get better results than i was with out advanced technology. My favorite however was the hand one(Jerry Uelsmann mimic) due to how it taught me how to photoshop and it also gave a extremely good result.

