

Rollbag™ R3200 Fulfillment Bagger

Increase Efficiency and Lower Material Costs

The Rollbag™ R3200 Fulfillment automatic bagger is an elite mail order fulfillment bagging system. This automatic bagger works with poly tubing as well as bags on a roll. The benefits of poly tubing include lower material costs as well as right-sizing of the bag to the product by changing bag length on the fly, lowering shipping costs.

The Rollbag R3200 Fulfillment bagger is equipped with a label printer applicator, to create a fully integrated batch-less order fulfillment bagging solution. Furthermore, this bagger can be equipped with a TwinPrint® dual sided label printer applicator to include the shipping information and packing slip on a single label. For those with long enough bags, a thermal transfer printer option is also available, allowing you to print directly on the bag material.

The standard Rollbag R3200 works with bags up to 16" wide x 24" long and has a seal bar opening of up to 6" (8" opening optional). The larger Rollbag R3200XL works with bags up to 22" wide x 36" long and features a seal bar opening of up to 11".

The Rollbag R3200 Fulfillment bagger includes a 1 year limited warranty, extendable up to 5 years when exclusively using Rollbag brand bags on a roll or poly tubing!

This bagger is ideal for e-commerce, order fulfillment and distribution facilities that require the highest level of performance in their order fulfillment packaging operation.



Operating Benefits

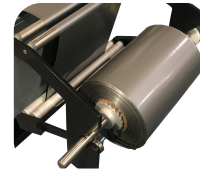
- Works with poly tubing as well as pre-opened bags on a roll
- Lower material cost when using poly tubing, by making bags inline before they are filled and sealed
- Integrated package discharge conveyor
- Large diameter rolls and variable bag length enables machine to package products of practically any length
- Easy load bag opener squares the bag up for ease of loading and supporting heavier products
- Integrated label printer applicator ties into warehouse management system to print shipping label directly on the outside of the bag

Safety Benefits

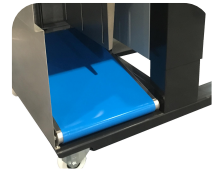
- Low pressure closing with obstruction detection system for improved operator safety
- Designed to meet CE requirements for improved safety and troubleshooting



Easy load bag opener squares open and grips the bag



Poly tubing greatly reduces material and shipping costs



Integrated outfeed conveyor is height and angle adjustable

Set-Up Benefits

- Interface port to integrate robotics and other feeding systems
- When using poly tubing, change bag length on the fly, manually or automatically via integration to WMS
- Store different bag length settings for quick job set-up
- Stand with casters and a compact design provides portability

Maintenance Benefits

- Designed to minimize preventative maintenance costs by using off-the-shelf components
- Self-diagnostics ensure quick problem solving
- Label applicator uses direct thermal printing, eliminating the need for costly thermal transfer printer ribbon
- Warranty extendable up to 5 years when exclusively using Rollbag brand material and labels



Rollbag Systems

a PAC Machinery company

Specifications	R3200	R3200XL
Speed (bags)	up to 40/min*	up to 40/min*
Speed (poly tubing)	up to 20/min*	up to 20/min*
Feed rate	up to 40"/sec	up to 40"/sec
Max bag width	16"	22"
Max bag length	24"	36"
Bag thickness	1-5 mil	1-5 mil
Electrical	120V @ 20A	120V @ 20A
Air	80psi @ 5CFM	80psi @ 5CFM
Warranty	1 year, extendable up to 5 years	

* Dependent on bag size, thickness, product, and printing



Optional TwinPrint® dual sided label printer applicator prints shipping information and packing slip on a single label, eliminating paperwork, minimizing errors, and reducing packaging time.

Printing Options

- TwinPrint® dual sided label printer applicator to include the shipping information and packing slip on a single label
- Print Registration – for use with pre-printed poly tubing that uses registered print film

Safety Options

- Dual Touch Start Switches – two switches must be touched simultaneously in order for the machine to cycle
- Light Curtain – prevents the operation of the bagger when the optical detection field is obstructed

Other Options

- Foot switch activation instead of using start button
- Adjustable Hole Punch – pneumatic punch that puts a small perforated hole in the bag, allowing for excess air to escape
- End of Roll Detector – used to monitor when the end of a roll has been reached
- Tall Frame - bag lengths over 24" (standard R3200 only)
- Right to left or backwards package outfeed



The R3200 Fulfillment can be equipped with a packing slip printer with , inclined outfeed conveyor, as well as other facility-specific options

Contact us today:

1 (234) 222-1000 ■ sales@pacmachinery.com



Rollbag Systems

a PAC Machinery company

775 Berea Industrial Parkway, Berea OH 44017 ■ (234) 222-1000 ■ pacmachinery.com

Specifications subject to change without notice



Ideal for bagging soft goods, apparel, and other items shipped in coex poly mailers