

Let's create Metaani land together





<https://discord.gg/metaani>



Metaani

What is Metaani?



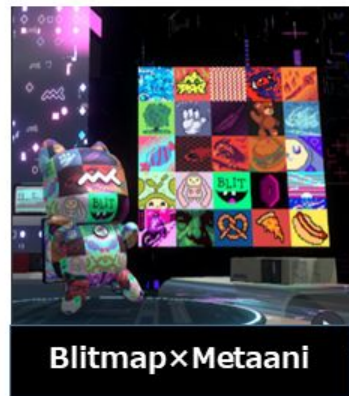
Metaverse first NFT Brand from Japan





What is Metaani?

- A project by two leading artists of cryptography/metaverse/VR and and an amazing blockchain engineer.
- 3D avatar created for use in the Metaverse.
- Collaborate by equipping your character with objects.



What is Metaani GEN this time?



10,000 Metaani Finally Released

All solids are unique. Unique sales system in place.

It's finally time to make it easier for everyone to get their hands on Metaani!

sales system

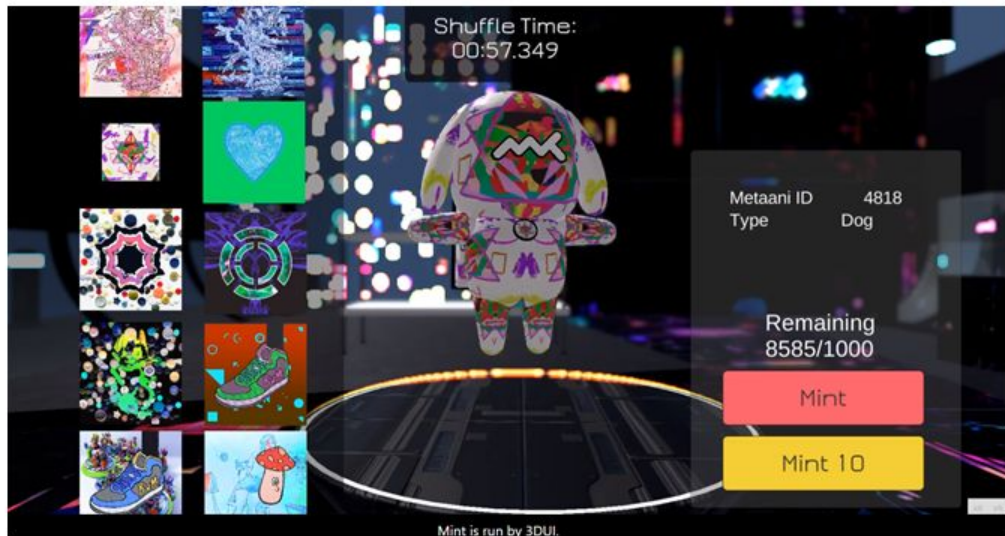


Sale start

10/2 8 PM(JST)
10/2 11 AM(UST)

1 × 0.15 Eth
10 × 1.4 Eth

A system to select and buy the Metaani you want.
※ No difference by rarity



Primary sales can be purchased via PC (no mobile phone allowed) / Secondary distribution is through OpenSea

■ **For a purchase of 10 units**

The Metaani of the 10 patterns shown on the left will be minted.

※ Only mint10 is eligible for bulk purchase discount.



Featured Roadmaps & Utilities

- **"Metaani Land"** created with holders. Each area of the Metaverse is expanded based on sales.
- **Music and Art Festival** Organizing **"Metaani Land Fes"**.
- Development of Metaani SDK
- **Holder Commercial Use Available**



and more!



Team



Misoshita

Art, Metaverse, VR
Super Creator



Mekezzo

VR/AR Creator/Game
Engineer



Nandemo Token

Blockchain Engineer

Metaani Land Project / Metaani GEN



Metaani GEN

Mint count 10000
price 0.15Eth
date 10/2

Roadmap
Building Metaani Land.

Metaani land is a metaverse space that can be joined by metaani avatars.

The area will be expanded according to the percentage of sales.

The goal of the project is to hold a Metaani FES in Metaani land and expand our IP.



10,000 mint coming soon



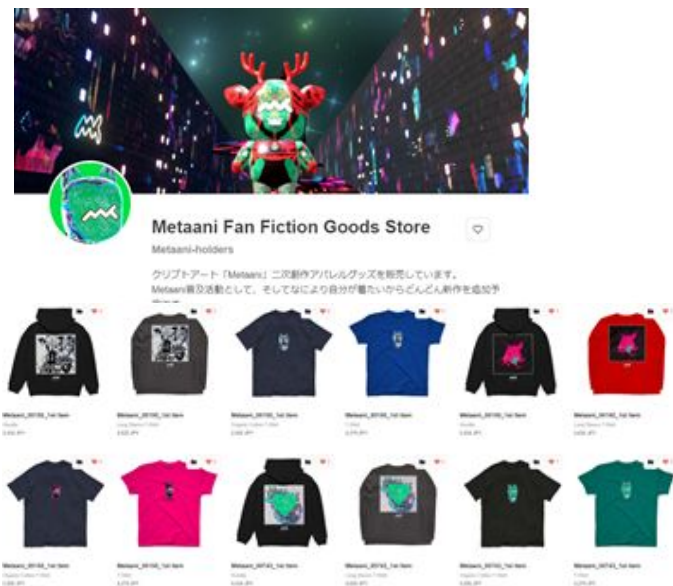
Metaani Community



Community Event



Game Collabo



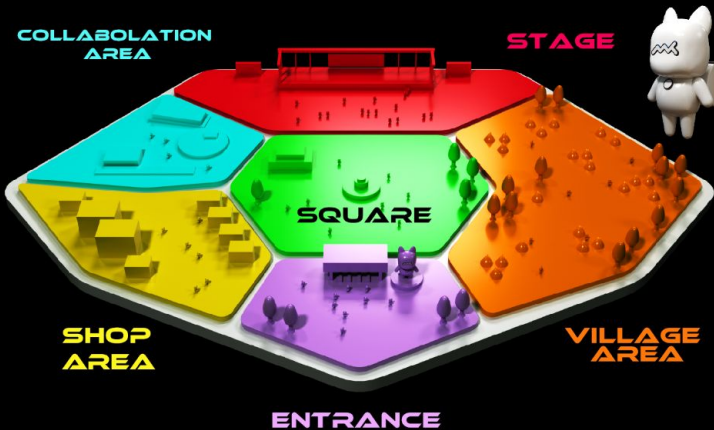
Holder Apparel Shop



METAANI LAND

ROAD MAP

Let's create Metaani land together



10%

ENTRANCE

Development of the Metaani photography function.



20%

SQUARE

Communication square with chat and emote functions.



40%

SHOP AREA

Sales area for NFTs, items, etc.
Development of apparel brands.



100%

STAGE

Organisation of music LIVE metaani FES.
3D advertisement in TOKYO.



80%

VILLAGE AREA

Exhibition area for artists and external collaborations.



60%

COLLABORATION AREA

Exhibition area for artists and external collaborations.



- Metaani land is a metaverse space that you can join with your metaani avatar.
- Depending on the percentage of sales, the area will be expanded.
- The goal of the project is to organize a Metaani FES in Metaani land.

50%

MUSIC

Production of music albums with Metaani Metaani image.



Our brand history / Previous Projects



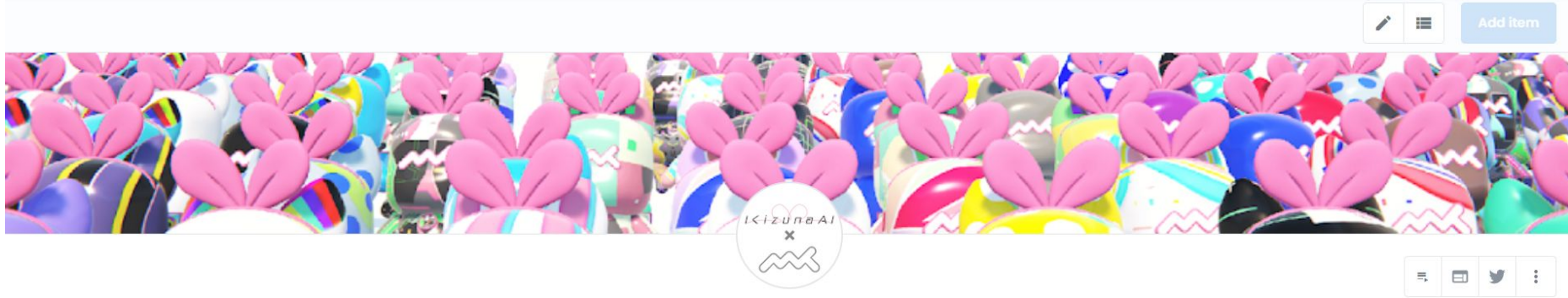
KizunaAI x Metaani

We collaborated with the world's most famous Vtuber KizunaAI(2.98 million subscribers)

200 types Limited to 1 NFT sold at 0.3Eth and sold out in 5 minutes!



Trading volume 2021/09/20



Add item



Metaani x KizunaAI

200
items

170
owners

0.95
floor price

108
volume traded

Metaani is CryptoArt Collaboration Avatar for metaverse.
It's KizunaAI x Metaani.

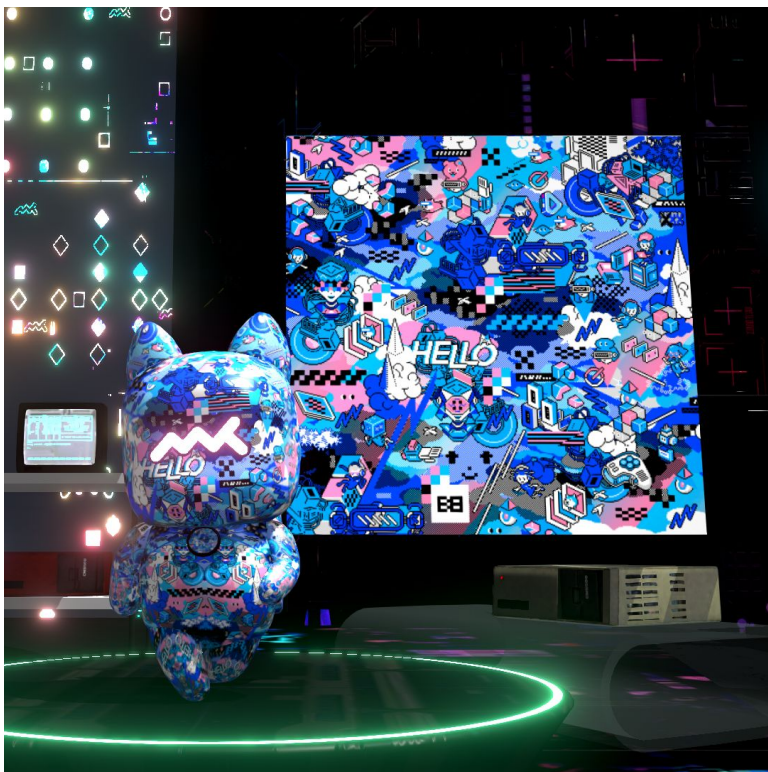
First sale EM! x Metaani

Our first sale

Crypto Artist EM!
Sold price 2.3Eth(2021/07)



Other collaborate crypto artist



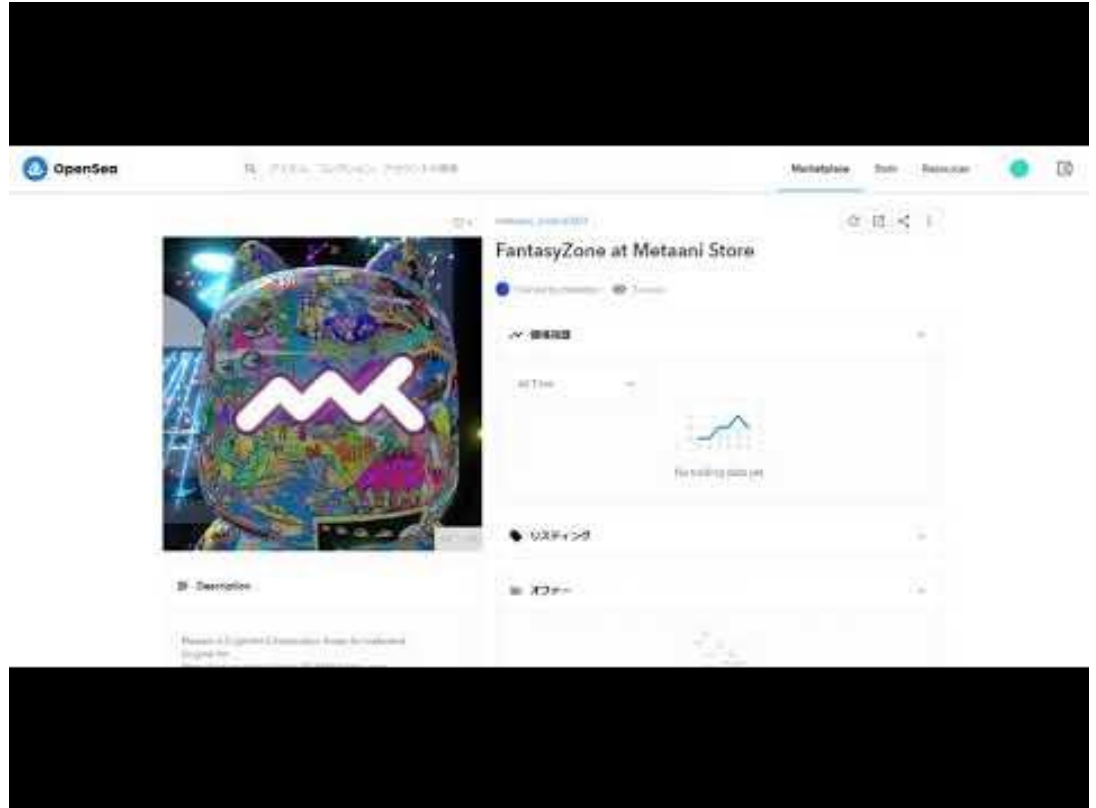
Metaverse Store(Multi user play on Opensea.)

We developed muti-user play mode.

You can visit our metaani store and walkaround the world

check Metaverse NFT

<https://opensea.io/assets/matic/0xa57a1456ccae14aca812b21598c72131e5fbd875/4>



Metaani's brand info

2022/3/8

Metaverse Avatar NFT/ VR ready avatar

Twitter follower 10k

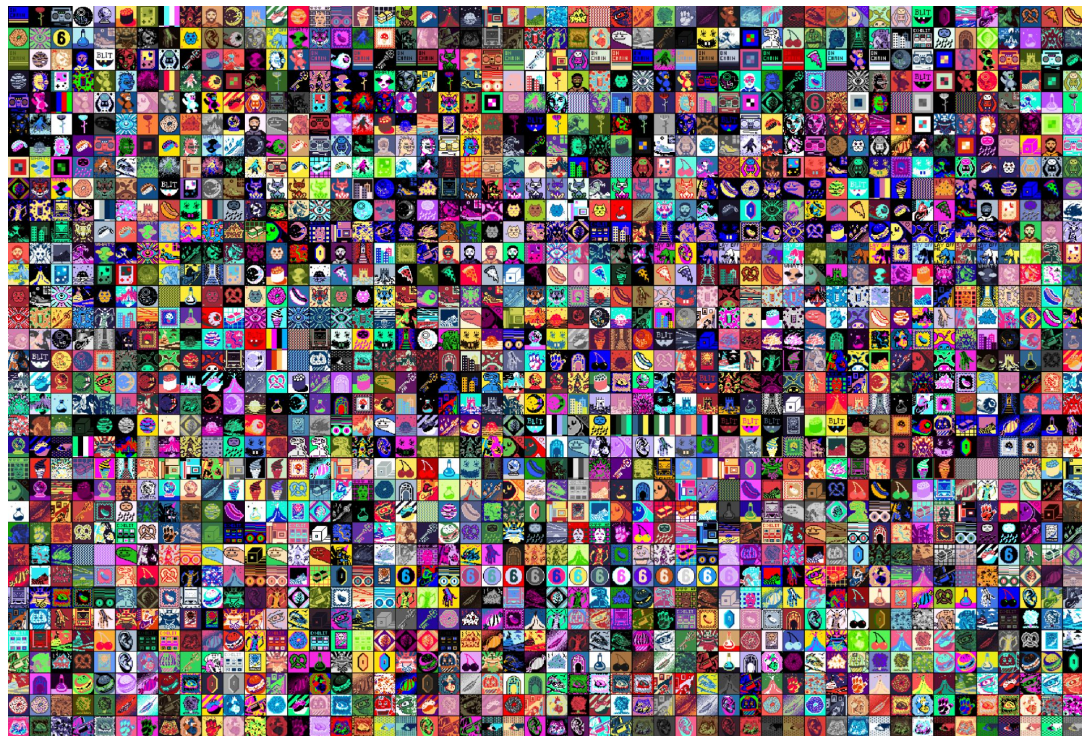
Current volume trade over 350Eth



Collaborate x Metaani



Blitmap (Public Domain) x Metaani



MaskNetwork



Realworld Branding



IRL



Team



Mekezzo
Engineer(Game), Director
VR x NFT Creator



Misoshita
Crypto Artist
VR Artist, 3D modeler



Conata.world

Metaverse Project from Japan developed by mekezzo

Metaani Store

<https://conata.world/metaani>

