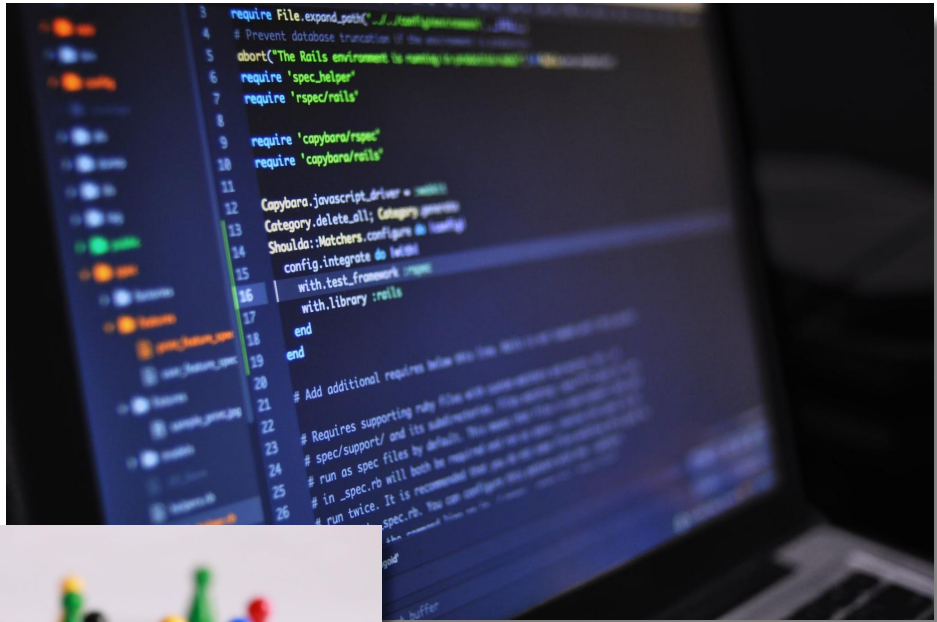
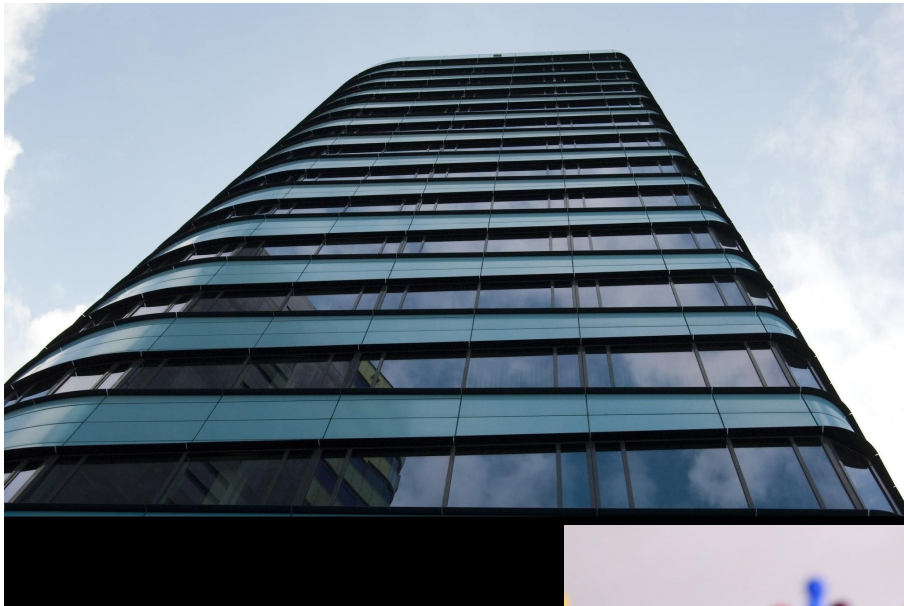
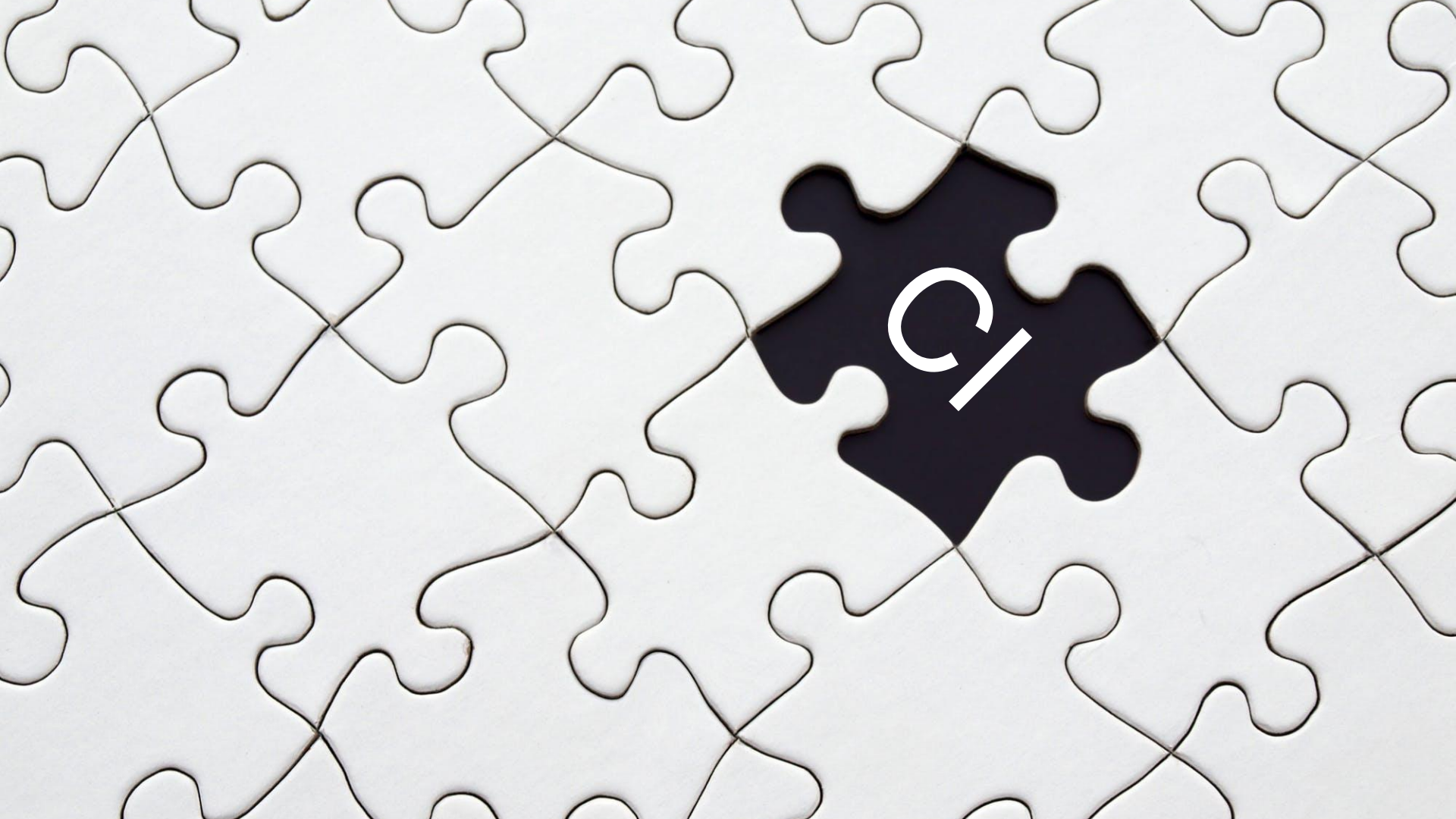


CI systems need care, too!

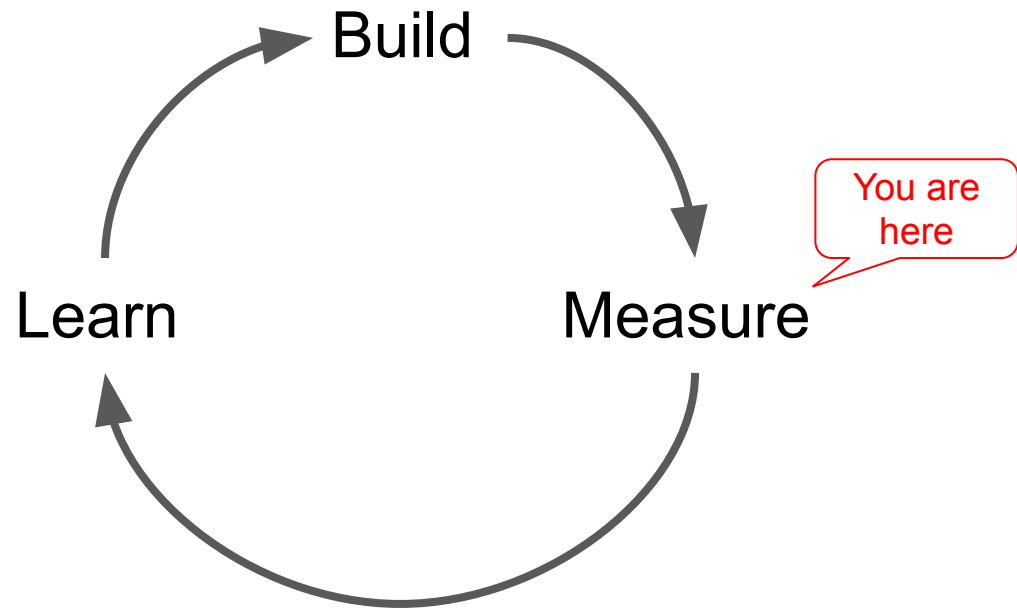
Here's how we improved ours over the years







C/1



Execute Windows batch command

Command

```
cmd /c echo %PATH%
cmd /c echo %PATH%
cmd /c echo %PATH%
cmd /c echo %PATH%
cmd /c echo %PATH%
cmd /c echo %PATH%
cmd /c echo %PATH%
```

See [the list of available environment variables](#)

Execute Windows batch command

Command

```
cmd /c echo %PATH%
cmd /c echo %PATH%
```

See [the list of available environment variables](#)



Execute Windows batch command

Command

```
[..]\jenkinsScripts\JenkinsCleanBeforeBuild.bat
```

See [the list of available environment variables](#)

Execute Windows batch command

Command

```
[..]\jenkinsScripts\JenkinsCreateBuildEnv.bat
```

See [the list of available environment variables](#)



Leistungsüberwachung

Datei Aktion Ansicht Fenster ?

Leistung

- Überwachungstools
 - Leistungsüberwachung
- Sammlungssätze
- Berichte

Vorherige Durchschnitt Minimum Maximum Dauer

Anzeigen	Farbe	Skalier...	Leistungsindikator	Instanz	Übergeor...	Objekt	Computer
<input checked="" type="checkbox"/>		1,0	Prozessorzeit (%)	_Total	---	Prozessorinformationen	\\VISGTS6322PCH
<input checked="" type="checkbox"/>		0,001	Verfügbare MB	---	---	Arbeitsspeicher	\\VISGTS6322PCH
<input checked="" type="checkbox"/>		0,0001	Bytes/s	D:	---	Logischer Datenträger	\\VISGTS6322PCH



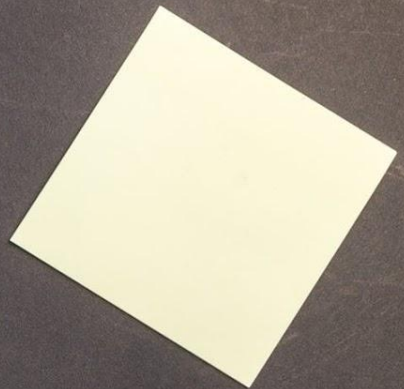
Blue Gene supercomputer



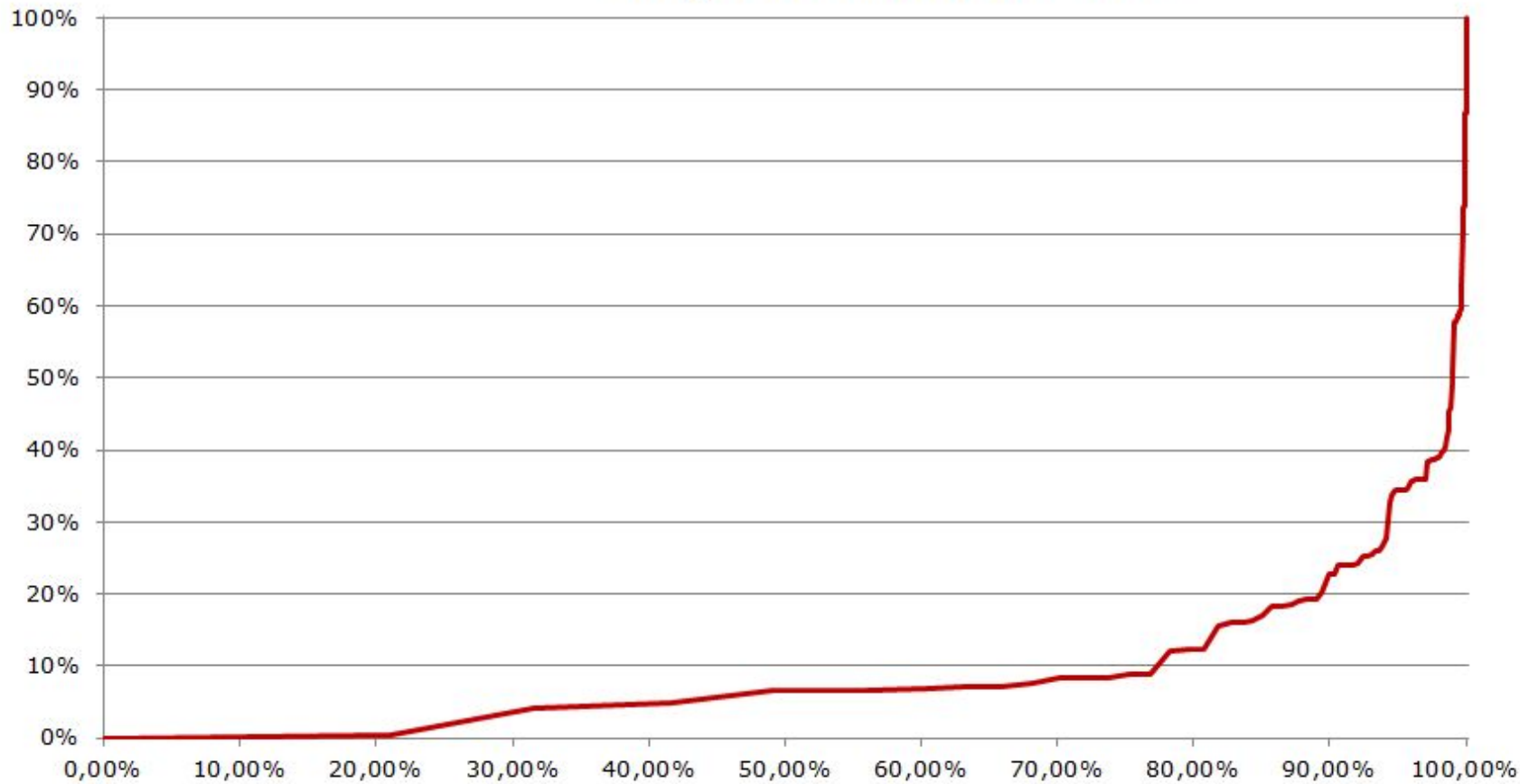


Gradle





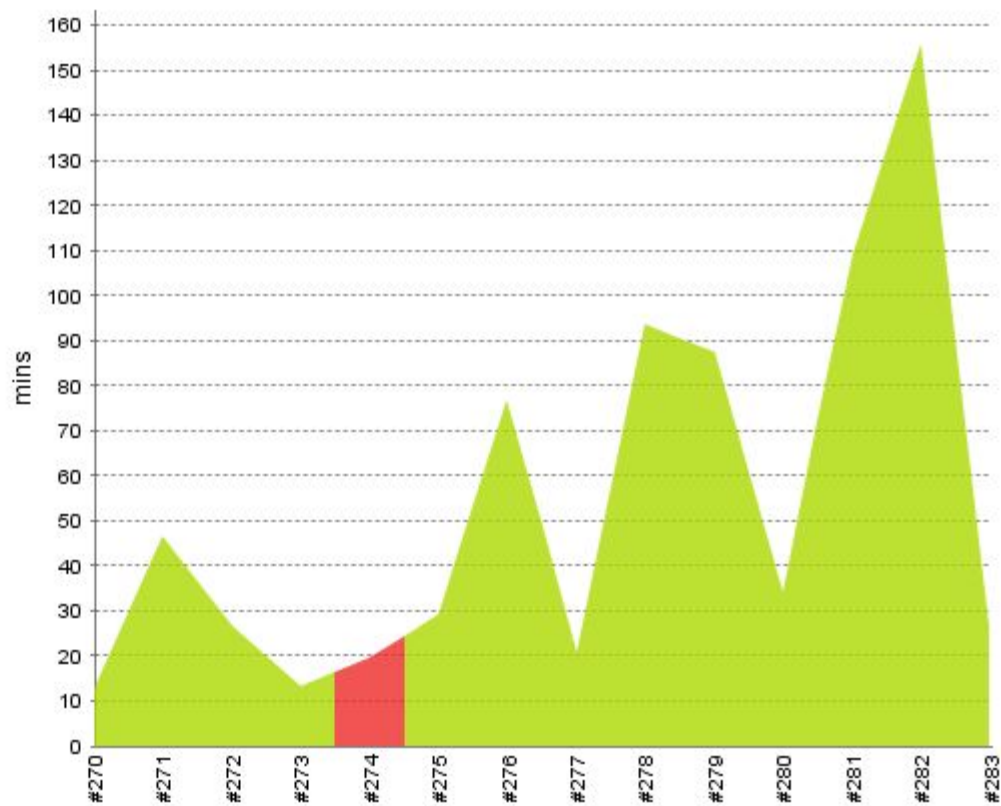
elapsed tests over time



feedback



Build	↑ Duration	Agent
#283	26 min	
#282	2 hr 35 min	
#281	1 hr 49 min	
#280	33 min	
#279	1 hr 27 min	
#278	1 hr 33 min	
#277	20 min	
#276	1 hr 16 min	
#275	29 min	
#274	19 min	
#273	13 min	
#272	26 min	
#271	46 min	
#270	12 min	





LUDWIGSBURG, GERMANY | OCTOBER 21 - 24, 2019

EVALUATE THE SESSIONS

Sign in and vote using the conference app or eclipsecon.org

- 1 0 + 1