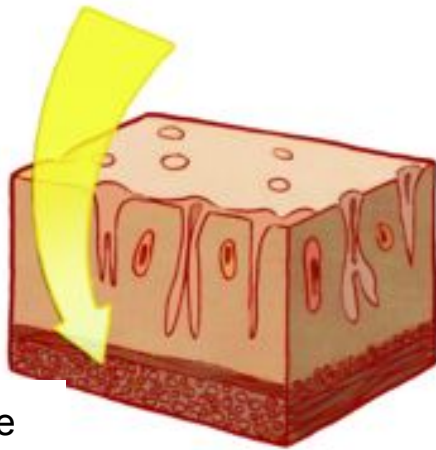


cells → tissues → organs → systems → organism

Cells



Tissue



Organ System

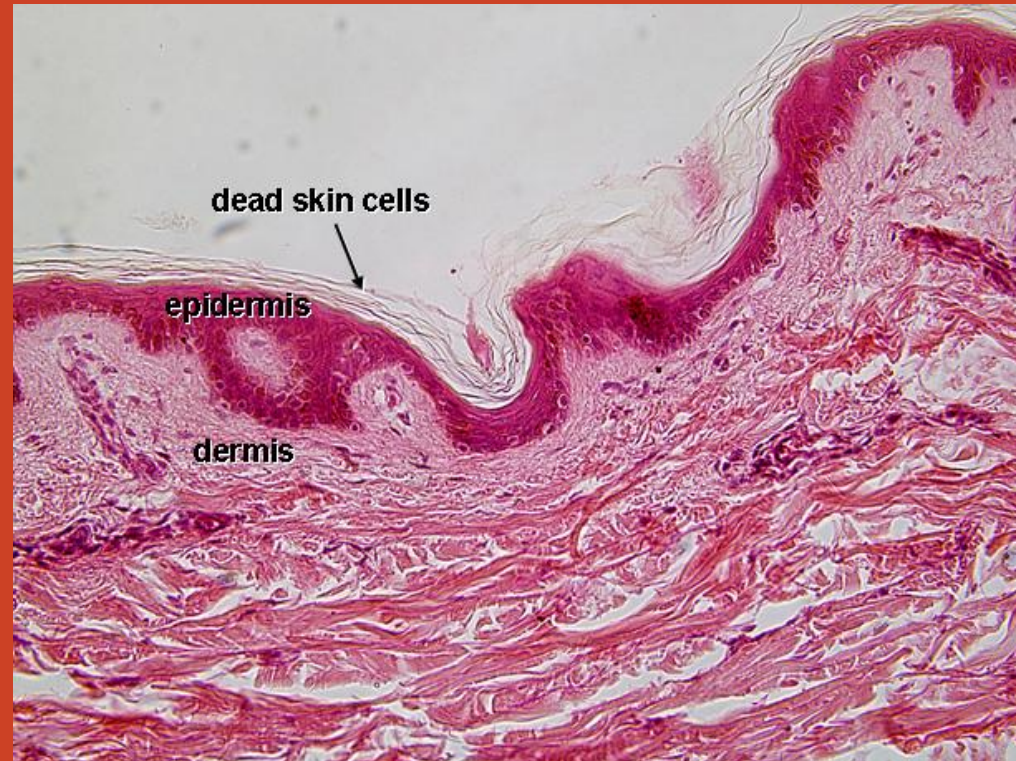
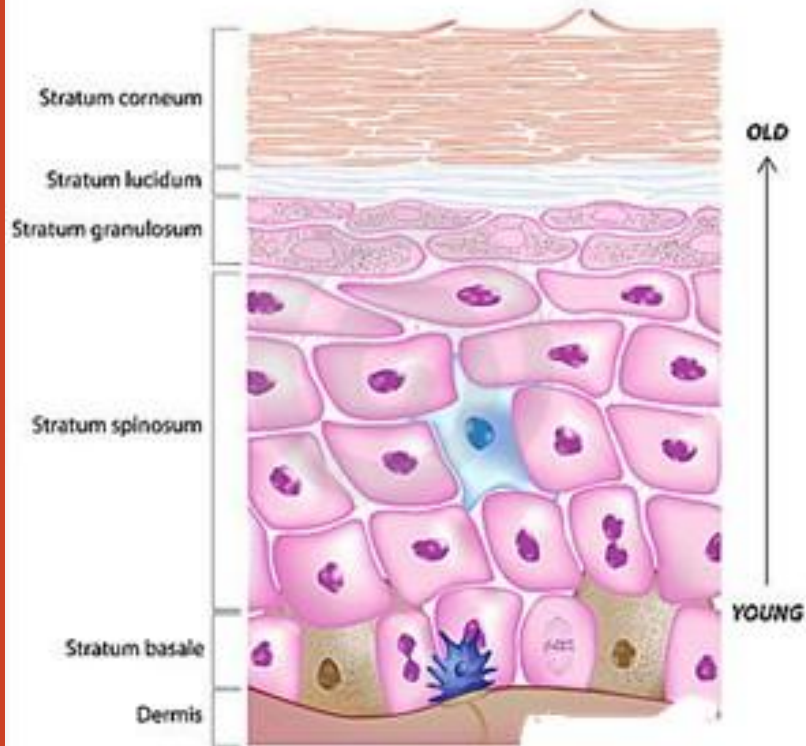


Organ

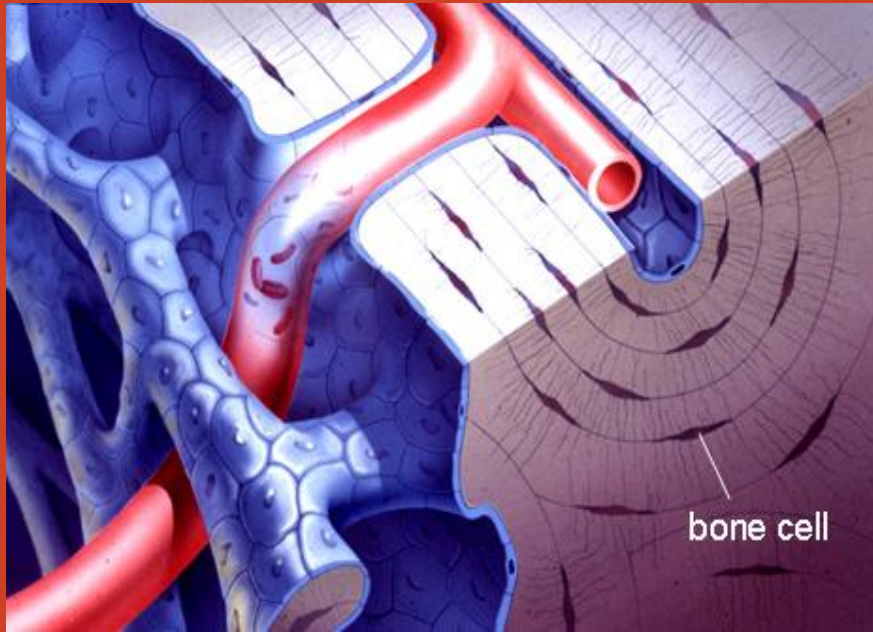


# Skin (epithelial) Cells

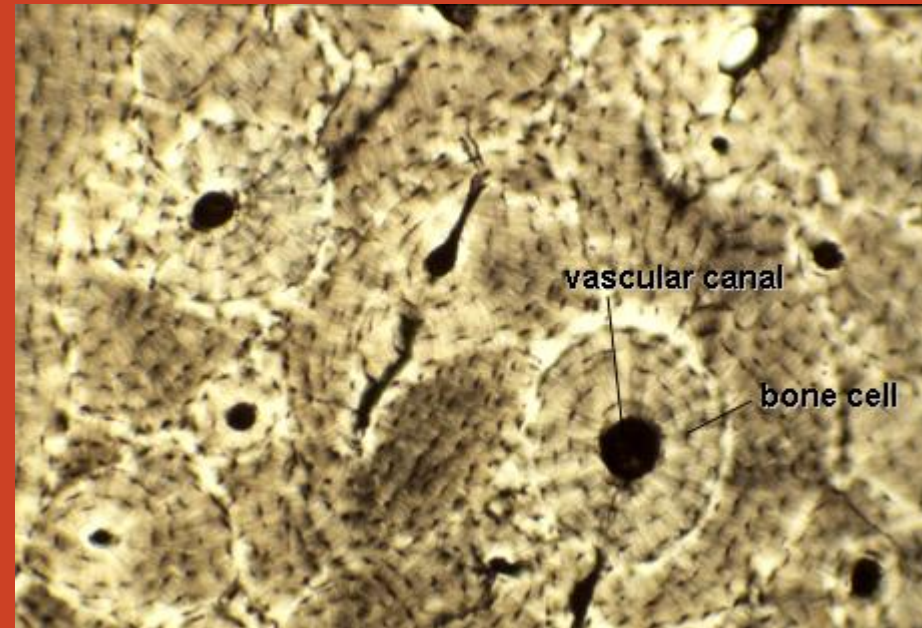
Structure of the Epidermis



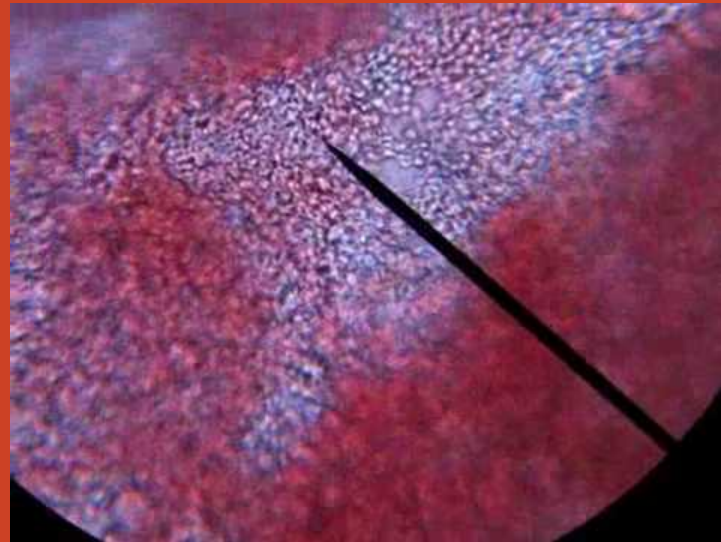
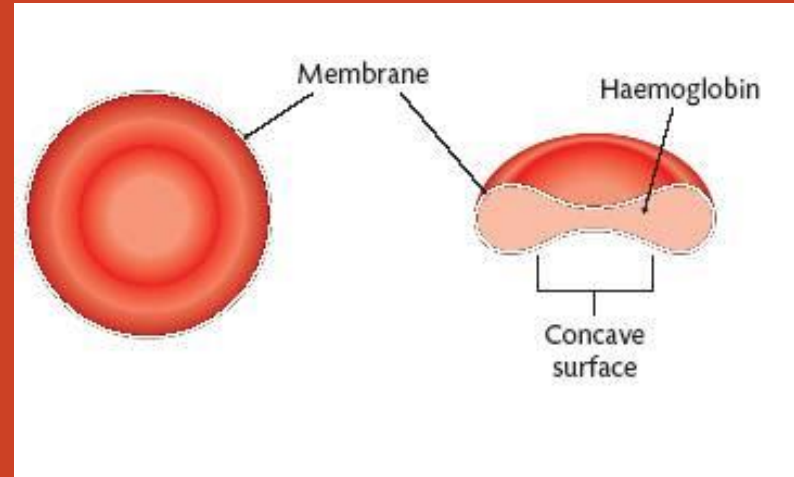
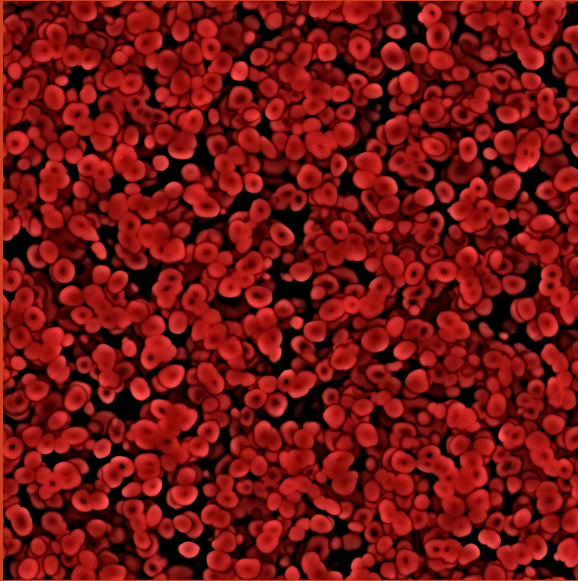
# Bone Cells (connective tissue)



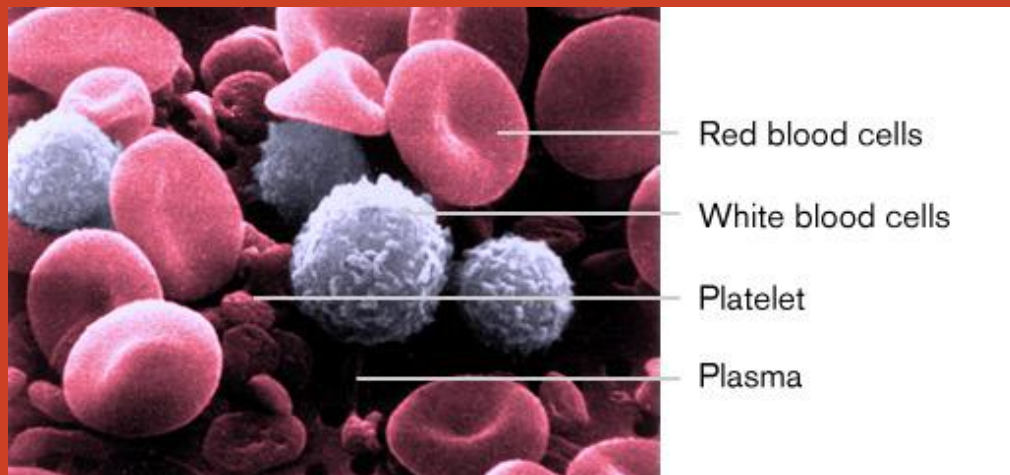
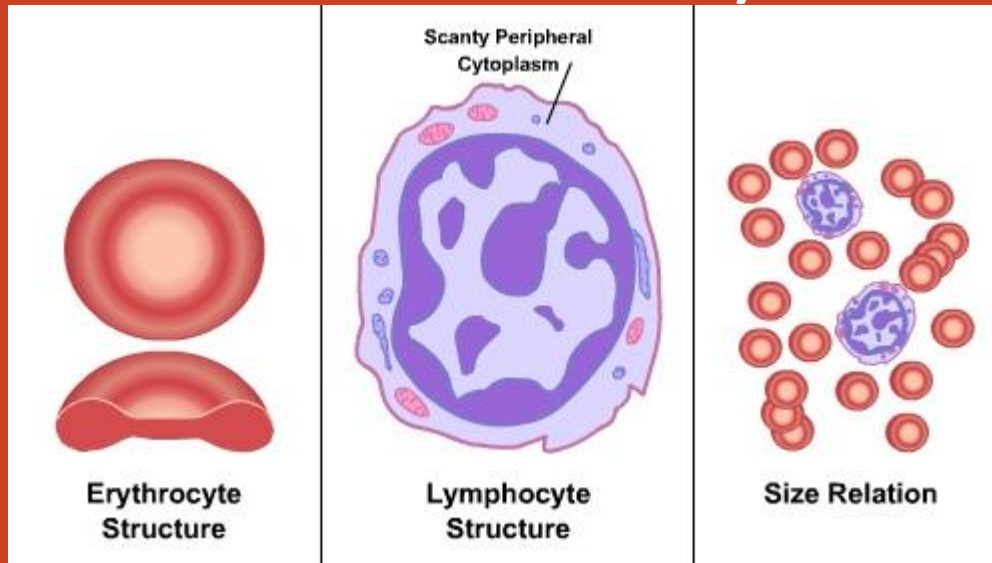
Bone cells under a microscope



# Red Blood Cells (connective tissue)

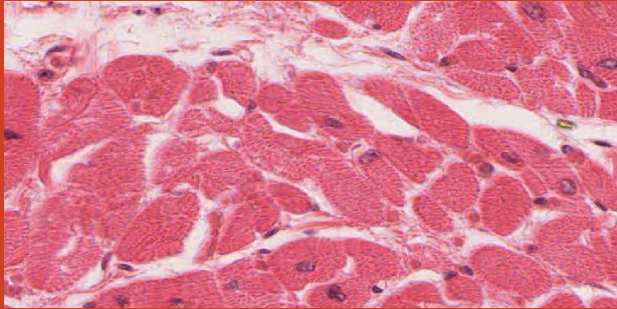


# White Blood Cells (connective tissue)

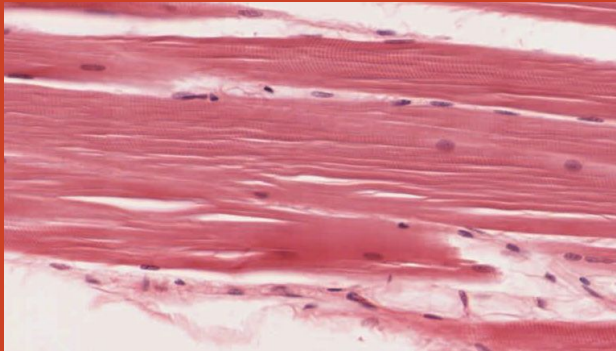


# Muscle Cells

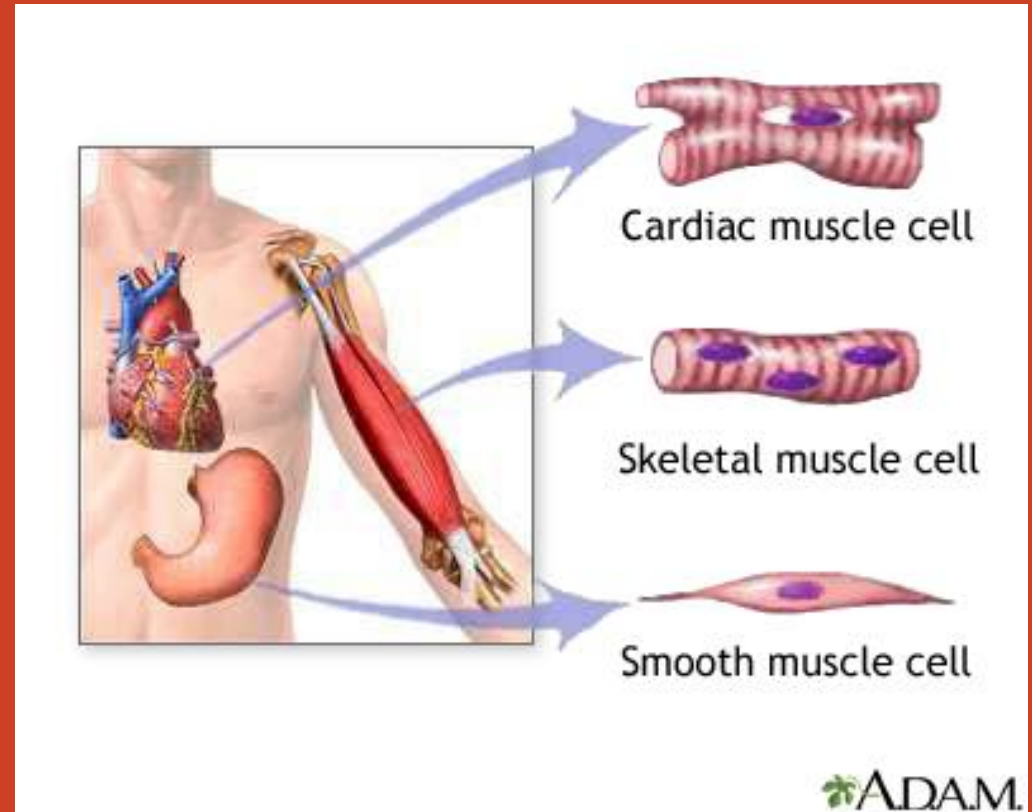
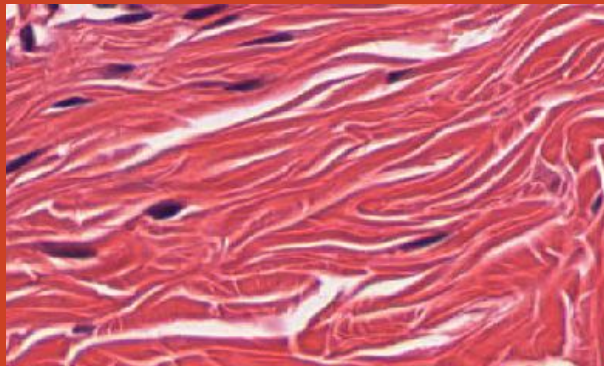
Cardiac Muscle



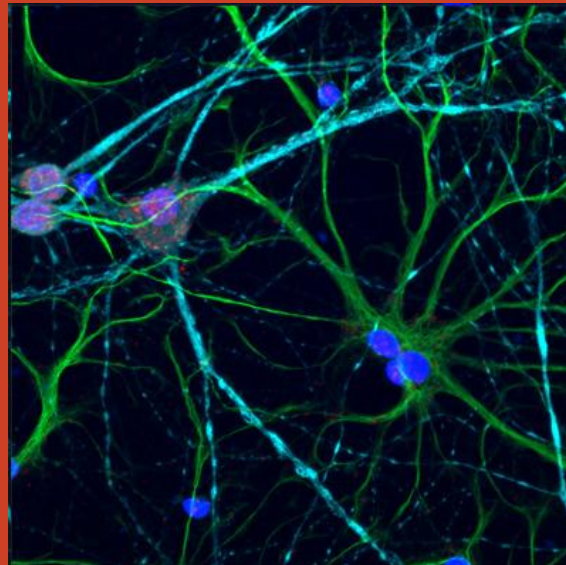
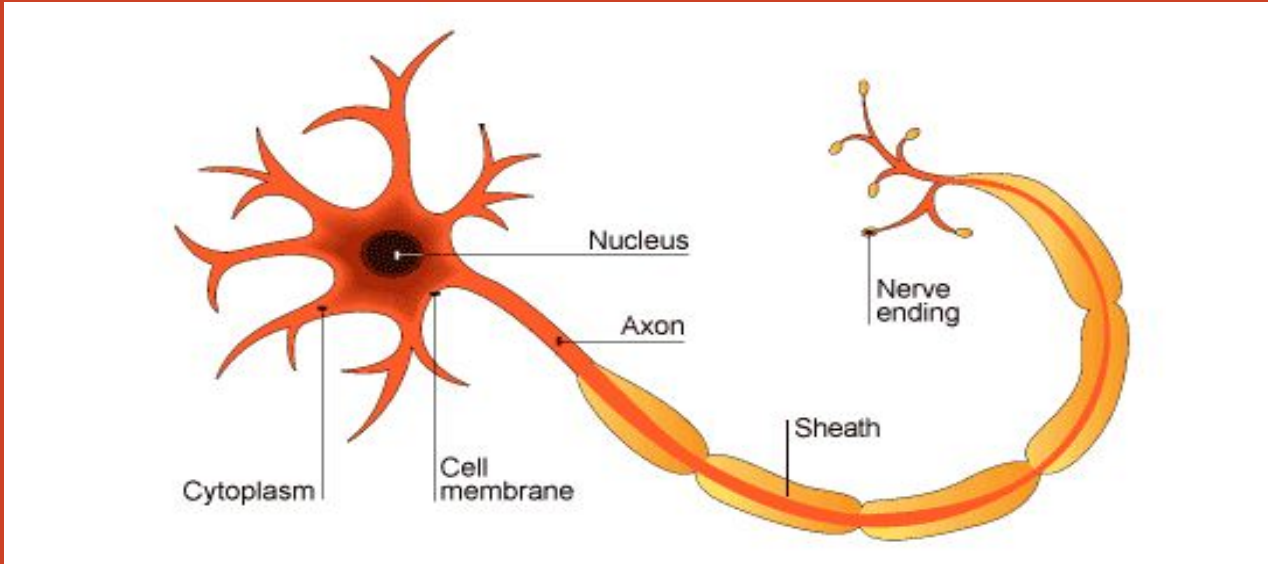
Skeletal Muscle



Smooth Muscle



# NEURONS! (Brain and Nerve Cells)



# Reproductive Cells





# Fertilization

