

<https://docs.google.com/presentation/d/1e53NK9PXCy0JGaYxaX0QMseBvoSP0dhL9pB2EwvOk0s/edit?usp=sharing>

2022 Summer Internship UMD Extension- St. Mary's County

By: Brian Wathen



Heirloom Tomato Trial



- High Tunnel at St. Mary's office
- Six varieties total with four newer hybrid varieties
- Medusa, Marnero, Marbonne, Marnouar, Big Beef Plus, Cherokee Purple
- Testing for disease resistance, fruit yield and quality
- Taste testing at Loveville Produce Auction and at our twilight tour
- Replicated trial at Upper Marlboro research farm



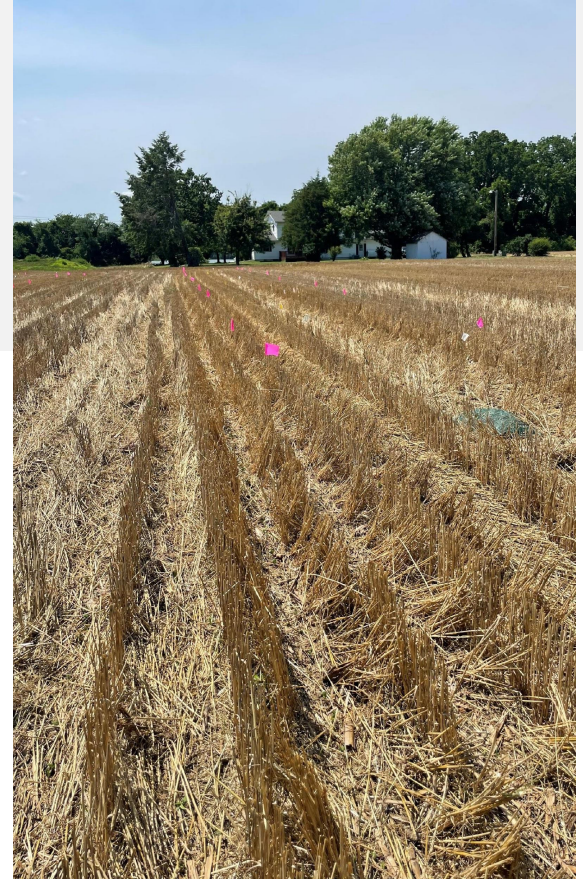
Hot Set Tomato Trial

- Consists of fifteen different cultivars
- Supposed to set fruit during the hotter conditions here in So. MD
- 12 farmers planted about the first two weeks in June
- Added two new varieties Dixie Red and Bejo 3353 - Patsy
- Also replicated at the Research farm in Upper Marlboro



Wheat Residue Trial

- Evaluating the breakdown of residue over time using different treatments
- Applied four treatments
- Residue bags were weighed out with 200g of wheat residue
- Soil samples taken for all twenty plots





Grafted Watermelon Trial

- Testing yield at different plant populations
- Spacing at 4', 6', and 8'
- Vine coverage between rows
- Ben charged me with learning to fly a drone and take aerial images and then analyze those images for percent canopy cover





Other Duties

- Data Entry from our trials in a spreadsheet
- Attended various meetings
- Attended both St. Mary's and Charles County 4-H Camps as an Adult Staff
- Soil Sampling
- Created a logo for St. Mary's Feeding the Hungry
- Farm Visits



What did I learn?

