

PLNs



How PLNs Can Support 21st Century
Teaching and Learning

Teacher Survey



Results of the Google Form survey that was sent prior to today's PD

Results.....



(insert results here...Response page?)

What does this tell us? How many teachers are using social media and how?

What is a PLN?

Personalized

Learning

Network



A tool that uses social media and technology to collect, collaborate, communicate, and create with connected colleagues anywhere at anytime.

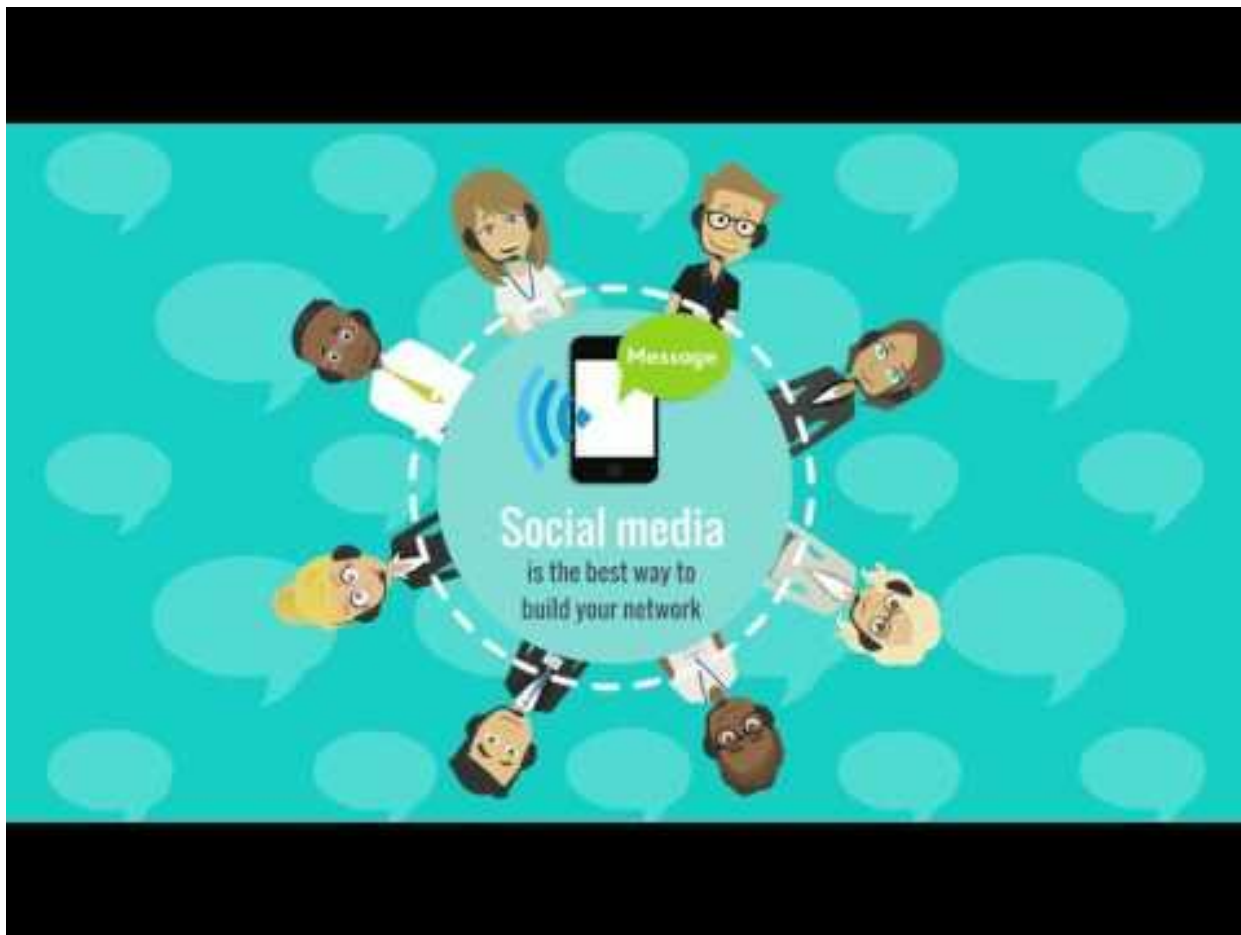
Why PLNs?

Are you always looking for new resources or ideas that you can use in your classroom?

Do like to share resources with others?

Teachers exchange methods and strategies. Online discussions and links enable access to materials that would not be revealed otherwise. Resources are accessible and exchanged through networked teachers.

PLNs ARE collaboration.



How to Build a PLN

Spend 20 minutes a day interacting and collaborating. Here are some ways you can get started:

- Start a Twitter account that focuses on following educators
- Build a circle of connected educators on Google+
- Follow education blogs (read AND comment)
- Follow education chats that are specific to your content area
- Join and participate in education groups on Facebook and LinkedIn
- Accept invitations to collaborate

Twitter

@cupofpedagogy

@MrOrr_geek

@MaryBourassa

Some people/groups I follow on Twitter that I look to for some teaching ideas or math ideas.

Now Build Your PLN

You will be given the next 30-45 minutes to start building your own PLN. Join Twitter or research some blogs that interest you to help build on your ideas about teaching and education.

Padlet

Join the Padlet and post some of the blogs you found or the people/groups you found on Twitter that you would like to follow.

What ideas have been sparked? How do you think your PLN will help your teaching?

Sources

<https://www.edutopia.org/blog/how-do-i-get-a-pln-tom-whitby>

https://youtu.be/_Fby_VgVpno