

---

**Attendance, Participation, Engagement...  
oh, my!**

Faculty Fusion 2023

---

—

**Your attendance  
policy?**

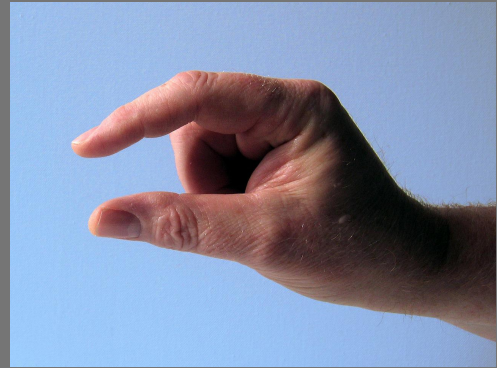
**Your students'  
attendance?**

—

**How do you feel about  
your students'  
participation and  
engagement in class?**

---

The goal today....



---

# Participation, attendance, engagement

What worked well for you  
regarding your  
participation, engagement,  
and attendance  
policies/expectations?

What did not work well for  
you regarding your  
participation, engagement,  
and attendance  
policies/expectations?

---

---

# Matt Deeg's PTO (paid time off) policy

- Attendance and Participation policy
  - To mimic a policy students might encounter post graduation.
  - Times you might need to miss class
  - "I provide a PTO system for our class. You may miss 3 days of class without penalty."
  - You are responsible for what is covered in class.
  - No note needed. No communication required (although most students email).
  - Deductions after missing 3 days.
-

---

---

## **Sarah Easter and Laura Phillips’ constructive engagement policy**

“Not to be confused with attendance, constructive engagement is the practice of actively engaging with your professors and classmates, as well as with [other elements of the class], with thoughtful contributions.”

---

---

# Evaluating Constructive Engagement

- Listening
  - Evidence of thorough analysis in comments
  - Ask constructive questions of classmates
  - Willing to share ideas collegially
  - Comments build on earlier comments to advance discussion
  - Comments incorporate readings and earlier discussions
  - Points made succinctly
-



---

# David Moser's attendance policy addition

David's attendance policy is detailed and expects attendance.

However, he has a "mental health days" additional section.

Students are given 3 mental health days.

---

---

## Language in the “mental health days” section

- They are asked to notify David ahead of time, but not required.
  - No reason required.
  - “Being a student is difficult. These days are meant to give you a breather, so use these when you need it.”
  - Expectation is to stay caught up and complete work missed.
-

---

# Rodney Ashlock's participation policy

- Students begin with 100 points
  - These points are yours to keep throughout the semester and are attached to attendance, proper use of technology, close reading assignments and Schlimm papers.
-

---

# Deductions to Rodney's point system

- have an unexcused absence--2pts
  - have an unexcused tardy--1pt
  - leave class without a valid reason--1pt
  - misuse technology--1pt (2pts if excessive)
  - engage in any type of disruptive behavior (2pts)
  - do not complete and are not ready to discuss the close reading assignment--3pts
    - (1-2 pts will be deducted if work is only partially completed)
  - do not complete and are not ready to discuss the reflection paper over the assigned chapter from Schlimm's book--3pts
    - (1-2 pts will be deducted if work is only partially completed)
-

---

# Participation Goals Article



—

What are you  
thinking about  
now?

