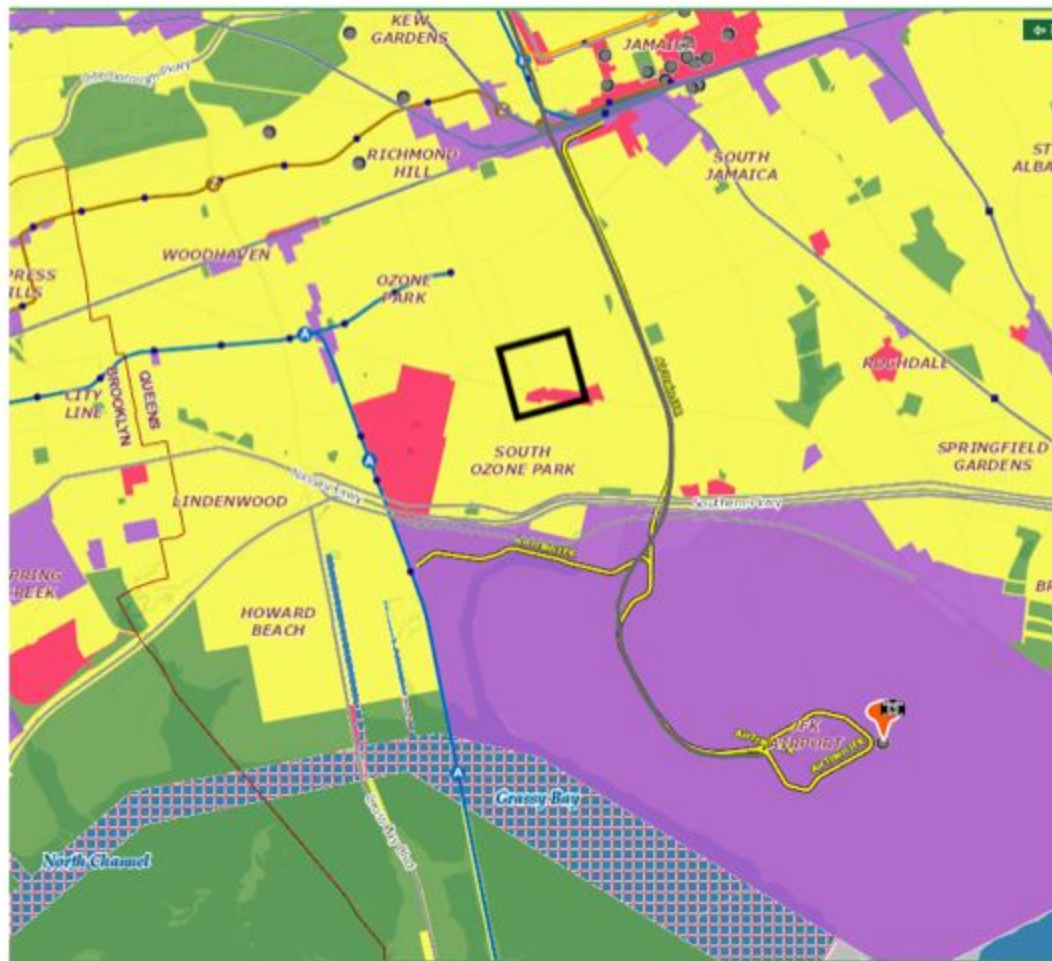
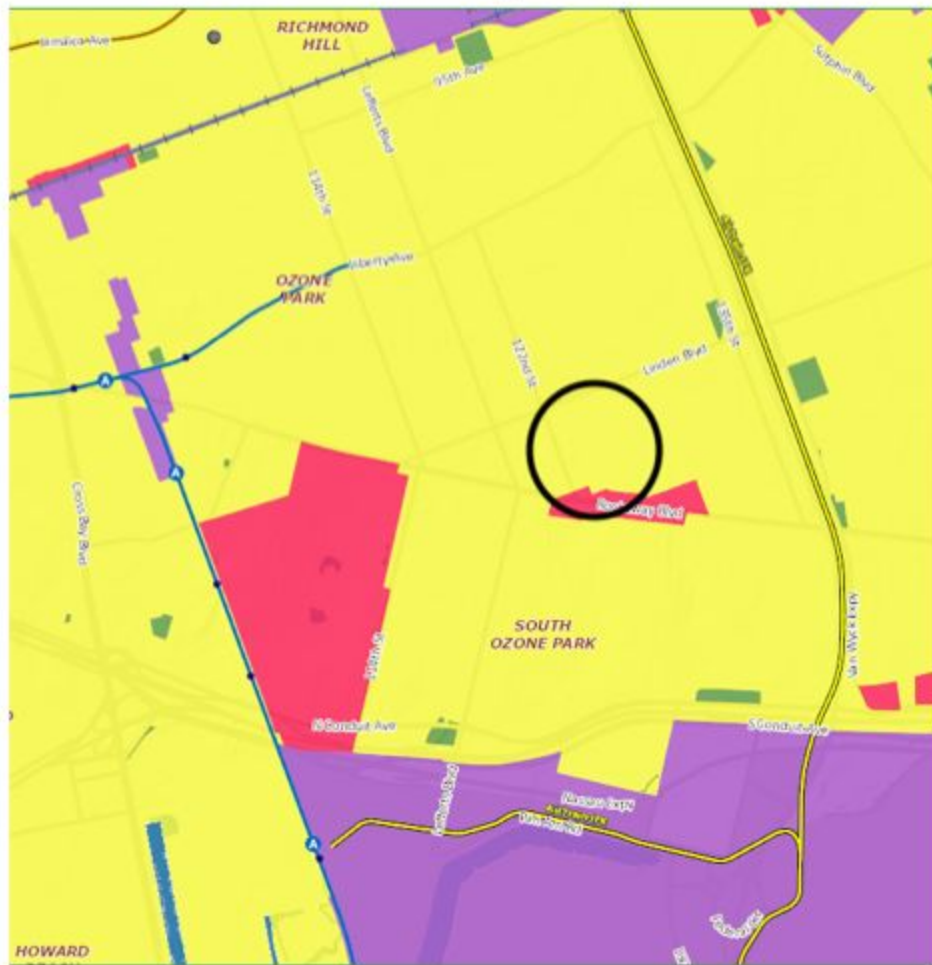


SOUTH OZONE PARK

QUEENS



- Major zoning districts
 - Residential
 - Commercial
 - Industrial Park
 - Commercial overlay districts
 - Special purpose (& limited height) districts
 - Restrictive (D) and Environmental (E) Declarations
 - Historic (& scenic) district boundaries
 - Historic Houses
 - Landmarked locations
 - Individual Landmark
 - Interior Landmark
- Transit, Roads, Reference Features [Show All](#) [Hide All](#)
 - Roads, ferries, commuter rail, neighborhood names
 - Roads
 - Major Roads
 - Interstate Highways
 - Tunnels
 - County Boundaries
 - Ferry
 - @ (commuter rail)
 - NYC subway routes and stations
 - NYC bus routes
 - NYC bike routes
 - Greenway / Multi-use
 - Striped & Signed
 - Striped w/ Auto Free Hours
 - On-street signed route
 - Link
 - CitiBike kiosk
- Parks, Playgrounds, & Open Space [Show All](#) [Hide All](#)
 - Parks & Public Lands
 - Open Space (NYC Dept of City Planning)
 - Forested Areas (NJ)
 - Federal Land
 - Community Gardens
 - School property with garden
 - Playgrounds
 - Green Spaces Along Streets
 - Golf Courses
 - Baseball/Soccer/Football Fields
 - Tennis/Basketball/Handball Courts & Tracks
 - Cemeteries



- Major zoning districts
 - Residential
 - Commercial
 - Industrial Park
 - Commercial overlay districts
 - Special purpose (& limited height) districts
 - Restrictive (D) and Environmental (E) Declarations
 - Historic (& scenic) district boundaries
 - 🏠 Historic Houses
 - Landmarked locations
 - Individual Landmark
 - ◆ Interior Landmark
- Transit, Roads, Reference Features [Show All](#) [Hide All](#)
 - Roads, ferries, commuter rail, neighborhood names
 - Roads
 - Major Roads
 - Interstate Highways
 - - - Tunnels
 - Ferry
 - @ (commuter rail)
 - County Boundaries
 - NYC subway routes and stations
 - NYC bus routes
 - NYC bike routes
 - Greenway / Multi-use
 - On-street striped lane
 - On-street signed route
 - Striped & Signed
 - Striped w/ Auto Free Hours
 - Link
 - 🚲 CitiBike kiosk
- Parks, Playgrounds, & Open Space [Show All](#) [Hide All](#)
 - Parks & Public Lands
 - Open Space (NYC Dept of City Planning)
 - Forested Areas (NJ)
 - Federal Land
 - Community Gardens
 - School property with garden
 - Playgrounds
 - Green Spaces Along Streets
 - Golf Courses
 - Baseball/Soccer/Football Fields
 - Tennis/Basketball/Handball Courts & Tracks
 - Cemeteries



ROCKAWAY BOULEVARD

ROCKAWAY BOULEVARD



Ray King

Connections

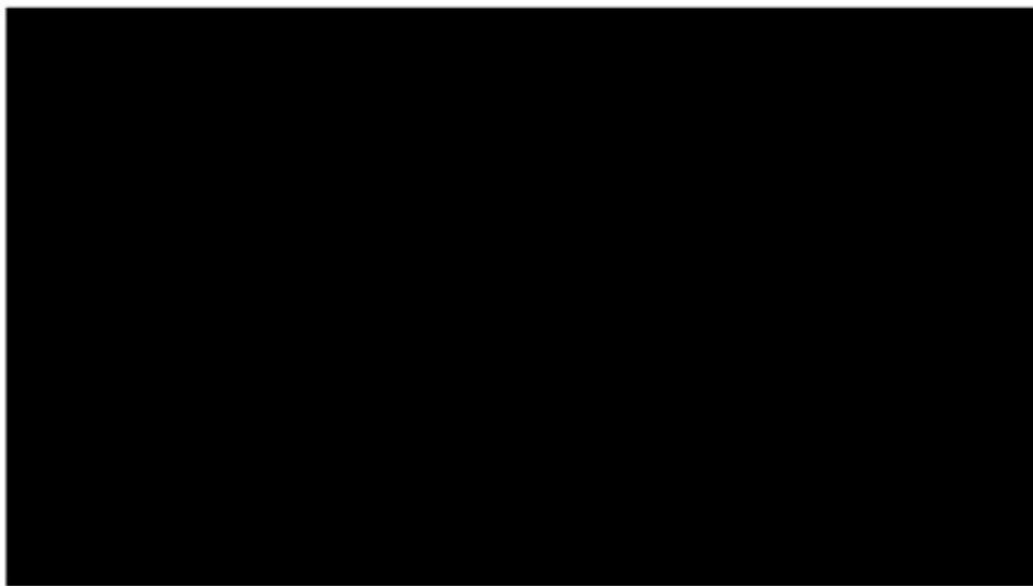
2015

Stainless steel and glass

Fabricated by Ray King Trullis

Commissioned by MTA Arts & Design and MTA New York City Transit

ROCKAWAY BOULEVARD



WOODHAVEN



"HARLEM OF BROOKLYN"

Real Estate.

FREE INVITATION.
NE

Save your children!
Save your money!
Invest and get rich!

OZONE PARK

Is "the Harlem of Brooklyn."

Come and investigate.

Half-hourly rapid transit!

Fare, one dollar weekly.

Time, only 30 minutes

from New York City Hall,

via Brooklyn Bridge.

High, healthy land.

Ocean air. No malaria.

Accessible by every ferry

Crossing the East River.

Right on Atlantic Avenue,

the great thoroughfare of Brooklyn.

In the path of improvements!

Close to your business.

Convenient to the seaside

By Rockaway Beach road.

Plainly in sight of the ocean.

Good fishing and boating

within ten minutes.

Property finely improved.

Stone sidewalks and shade.

Schools, churches, stores,

and passes free to adults. Address

HITCHCOCK & DENTON, 14 Chambers St., New

YORK

SALE—Factory property; close con

HITCHCOCK & DENTON'S

Map No. 2

OZONE PARK,

"HARLEM OF BROOKLYN,"

30 MINUTES FROM NEW YORK CITY HALL

Via the East River Bridge.

WOODHAVEN
VILLAGE

Has a Large Population.
Over 1000 houses and
factories employing 500
to 600 hands, and other
branches of industry.
The largest population
in the vicinity of the
Atlantic Ocean.

ENLARGEMENT.

ENLARGEMENT.

ENLARGEMENT.

ENLARGEMENT.

ENLARGEMENT.

ENLARGEMENT.

ENLARGEMENT.

ENLARGEMENT.

ENLARGEMENT.

ENLARGEMENT.

ENLARGEMENT.

ENLARGEMENT.

THREE
LINES OF RAILROAD

RAPID TRANSIT & CHEAP FARE.

PUBLIC SCHOOLS,
Churches & Stores.

PURE OCEAN AIR.

Absolutely Free from Malaria.

SPECIAL IMPROVEMENTS.

ARTIFICIAL STONE SIDE WALKS.

Elegant Shade Trees.

80 ACRES OF LAND.

LOTS \$250 TO \$300.

CONVENIENT TO THE CITY.

Address: HITCHCOCK & DENTON, 14 Chambers St., New York.

HITCHCOCK & DENTON, 14 Chambers Street, New York.

CITATIONS

- *OASIS Map*,
http://www.oasisnyc.net/map.aspx?zoom=3&x=1034636.29&y=181422.39&etabs=0&categories=PARKS_OPENSPACE,PROPERTY_INFO,BOUNDARIES&mainlayers=NJ_FOREST,PARKS,GOLFCOURSES,CEMETERIES,PLAYGROUNDS,STREETGREEN,COURTS,FIELDS,GARDENS_SCHOOLS,GARDENS,Cache_Transit,NYCT_subway,LOTS&labellayers=PARKS,&satellite=BaseCache.
- Boys, Bowery. "The Breezy Story of Ozone Park, Queens: 'the Harlem of Brooklyn.'" *The Bowery Boys: New York City History*, 13 June 2019, <http://www.boweryboyshistory.com/2015/09/the-breezy-story-of-ozone-park-queens-the-harlem-of-brooklyn.html>.
- *Old Woodhaven Village - NY Daily News - February 11, 1979*,
<http://www.projectwoodhaven.com/2009/September/woodhaven-village.html>.