

Mercedes Benz Biodiversity Challenge

Team Mercedes Bees



The Plant

Northern part of the Bremen
production plant

3 areas:

Canteen

Boulevard

Overpass




The Pollinator Garden

Vegetation and habitat diversification
Native seeds and nursery plants
Minimal chemical use

ECOLOGICAL APPROACH

...



Fruit trees and smaller shrubs
to provide nectar and habitat
for birds and insects

SHRUBS AND FRUIT TREES

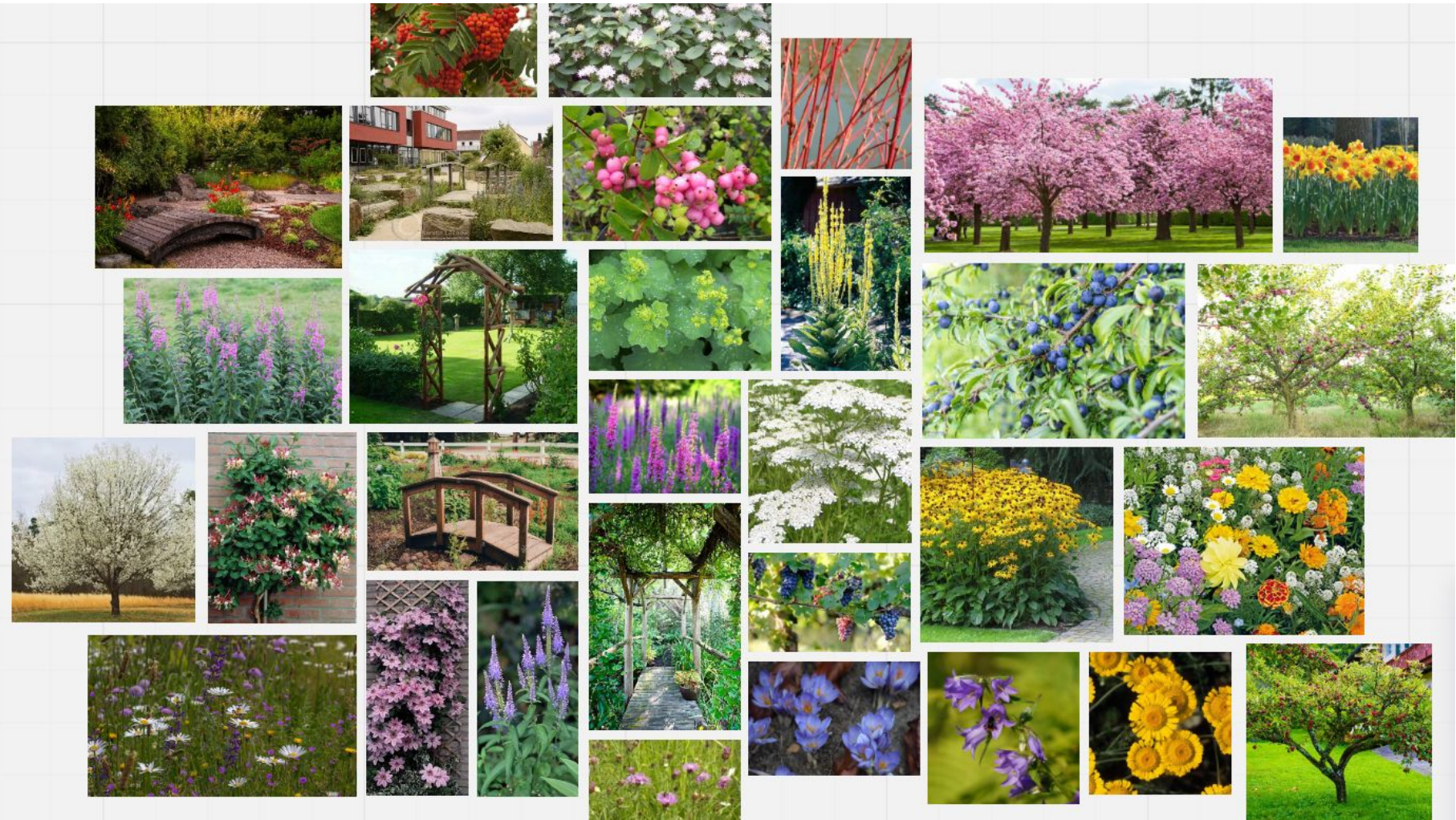
Different shapes and sizes
Perennial and annual types
Alternating blooming calendars

FLOWERS

...

Insect hotels and bird houses to
provide shelter and water baths
to drink from

SHELTER

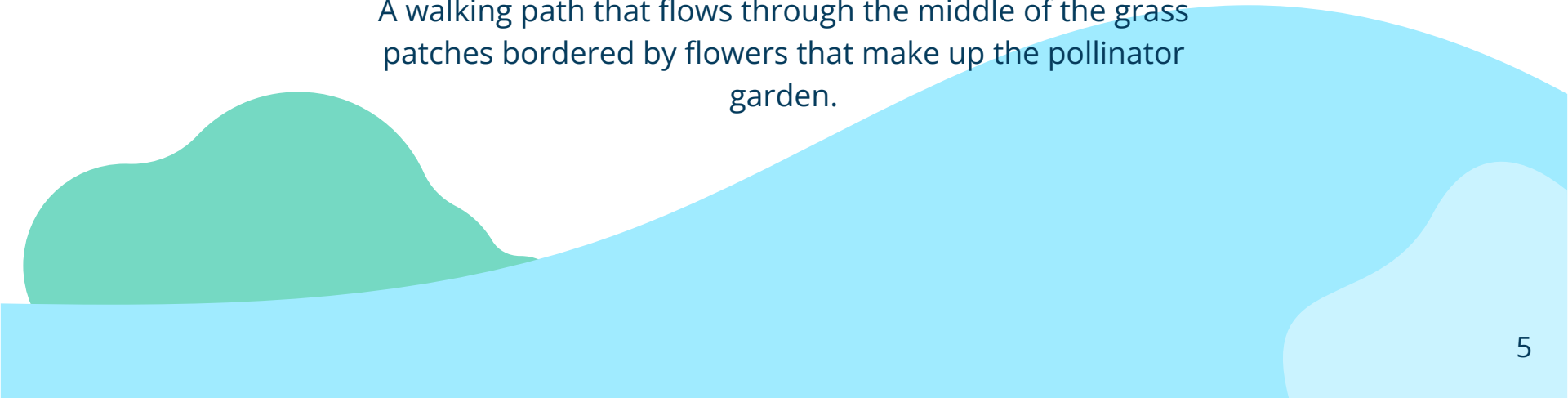




...

BOULEVARD

A walking path that flows through the middle of the grass patches bordered by flowers that make up the pollinator garden.



BOULEVARD PLAN

- **Biotic attraction**

- Increased number of flowers
 - flower beds bordering the gravel path and surrounding the trees*
 - Attracts insects for pollination within the garden, helping to increase the number of birds
- Nests in the birdhouses
- Insect hotels on either side of the Boulevard

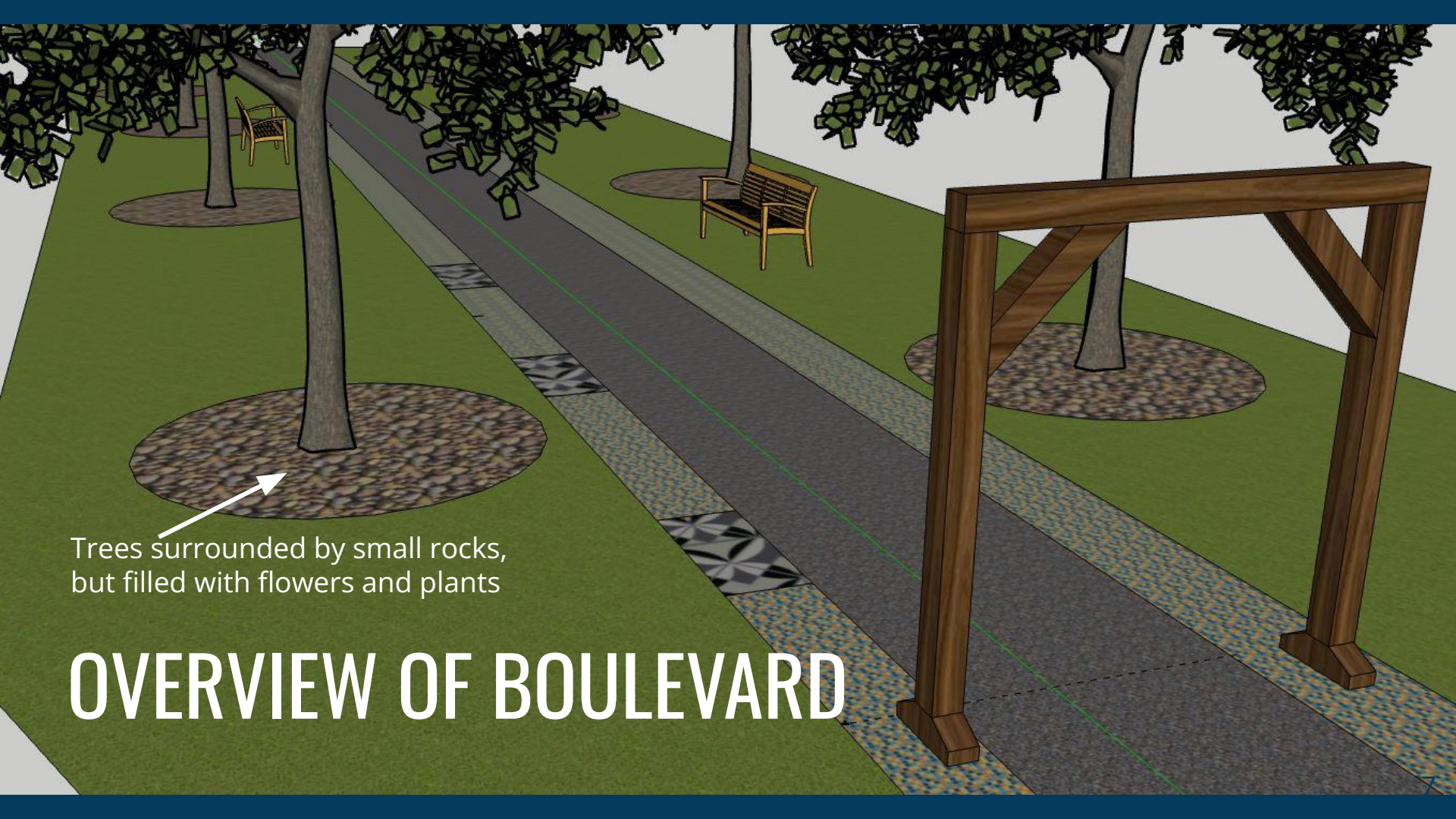
- **Benches** on alternating sites

- **Mosaic** pattern of vegetation in between the flower beds

Results:

- More biodiverse, resilient, and multi-functional landscape
 - Bringing together various trophs
 - Create an aesthetic and colorful environment for people





Trees surrounded by small rocks,
but filled with flowers and plants

OVERVIEW OF BOULEVARD



...

OVERPASS

Partially shadowed area with less precipitation. It is necessary to use the available water as efficiently as possible and choose for plants that need less sunlight.

OVERPASS PLAN

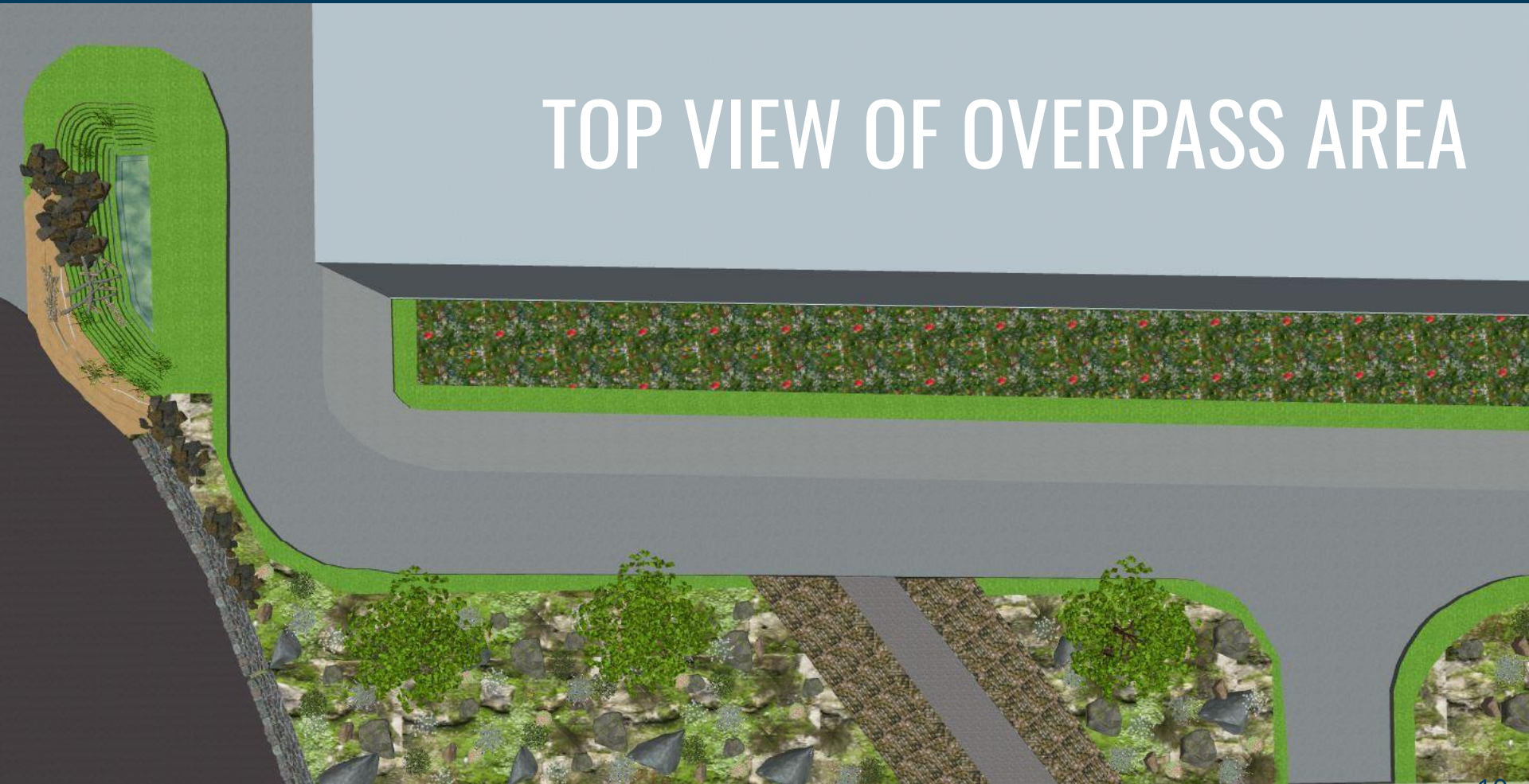
- Distinct flat pebbled **path**
- **Lichen walls** slightly lifted on either side
- **Mosaic pattern** of vegetation and stones
- **Pond** Enhancement
- Sheltering **rock wall**

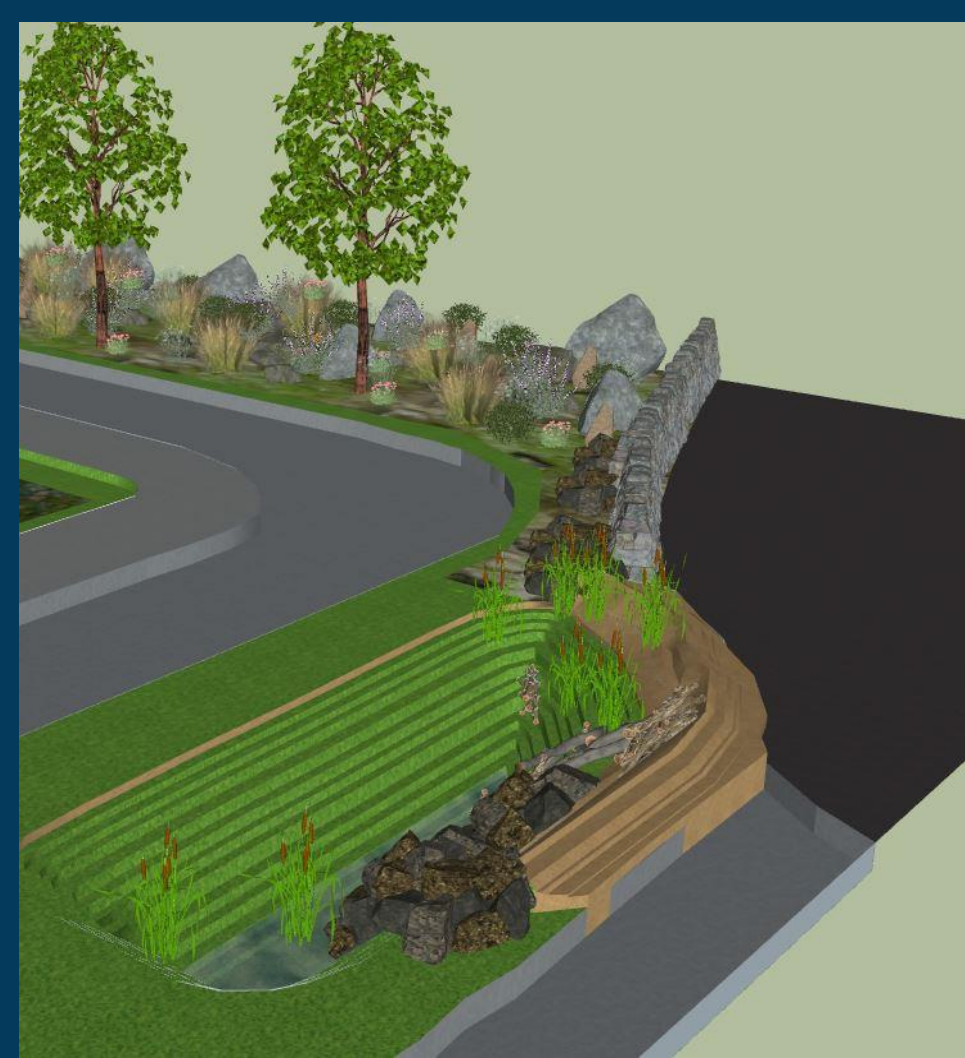
Results:

- More biodiverse, resilient, and multi-functional landscape
 - Multiple layers of water catchments
 - Increase water retention to address runoff
 - Aquatic habitat for insects, birds and amphibians



TOP VIEW OF OVERPASS AREA





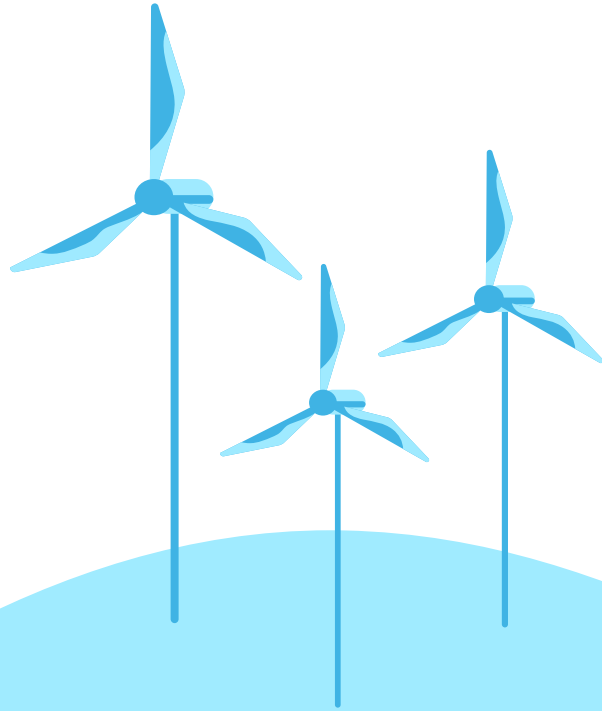
**ECOLOGICALLY
ENHANCED POND**



**MOSAIC OF STONES, FLOWERS,
MOSSES, GRASSES AND SHRUBS**



Cost Associated with the Pollinator Garden



Overpass

Approximately 2.000 m²

- Rocks + wall - € 2500
- Plants and seeds - € 2500
- 15 m² brick - € 1500
- Branches and sticks - € 50
- Water plants - € 200
- Gravel - € 200
- Installation - tbd

€3.50 per square metre



Boulevard

Approximately 4.000 m²

- Rocks - € 1000
- Plants and seeds - € 3500
- 4 benches - € 600
- Wooden arch - € 50
- Garden tools - € 250
- Mosaik - € 1500
- Installation cost - tbd
- Maintenance - € 500/y

€1.70+ per square metre



Mercedes Bees Team

Annoek Reitsema

Overpass

Sam Evers

Overpass

Nhu Anh

Overpass

Sofia Jorge

Boulevard

Amelie Billiard

Boulevard



CREDITS: This presentation template was created by **Slidesgo**, including icons by **Flaticon**, infographics & images by **Freepik** and illustrations by **Stories**

Thanks!



Do you have any questions?

