

The background of the slide is a complex, white line-art pattern on a dark blue background, resembling a detailed street map or a vector-style map of a city. The lines represent buildings, roads, and other urban features.

MIERUNE BASE: The geospatial service for serving and sharing datasets

FOSS4G 2023 Prizren



MIERUNE

IGUCHI Kanahiro



GIS/OSS Enthusiast **IGUCHI Kanahiro**

CTO at MIERUNE Inc.
MapLibre User Group Japan



<https://github.com/Kanahiro>

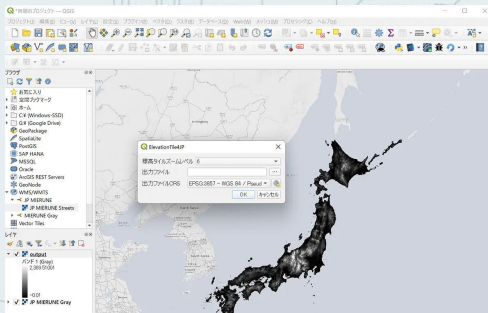
**MIERUNE is a tech company in
Japan, specialized in
Geospatial technologies.**

MIERUNE means “It’s visible!” in Japanese.

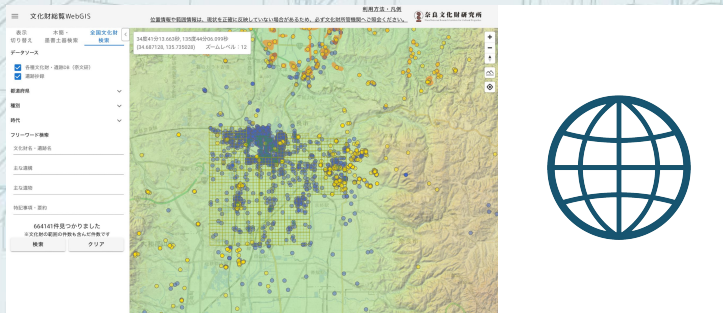


Prizren, Kosovo

Sapporo,
Hokkaido,
Japan



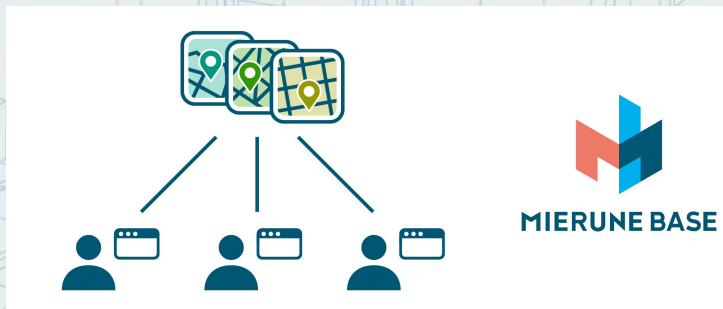
QGIS



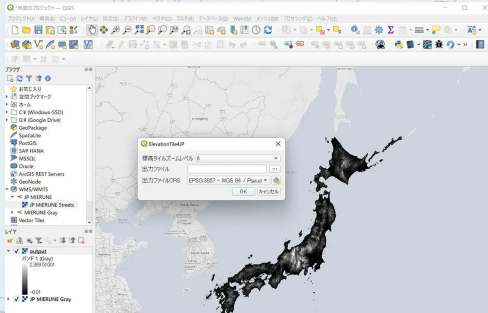
WebGIS



MapTiler



MIERUNE BASE



QGIS

QGIS

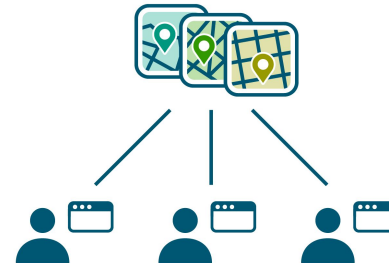
- Plugin Develop
- Consulting
- Seminar

WebGIS



maptiler

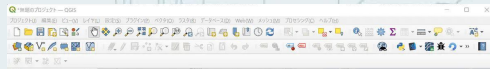
MapTiler



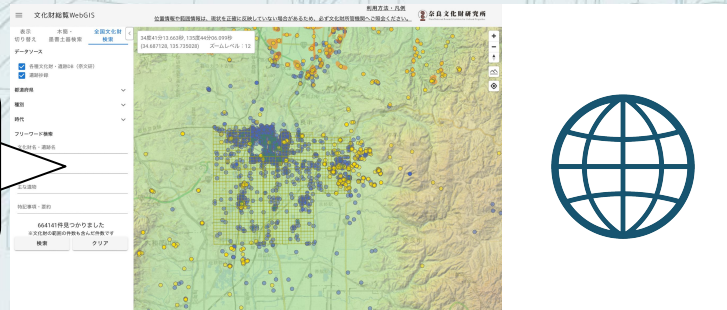
MIERUNE BASE

MIERUNE BASE

- Develop Full-stack Web GIS Apps



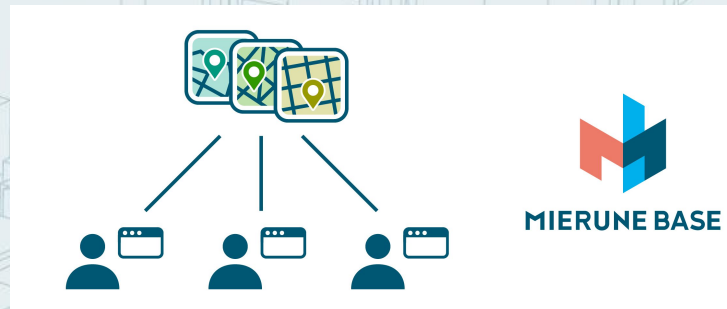
QGIS



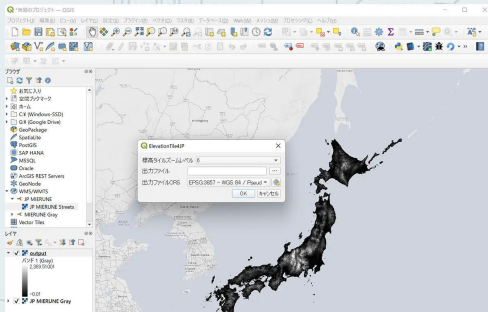
WebGIS



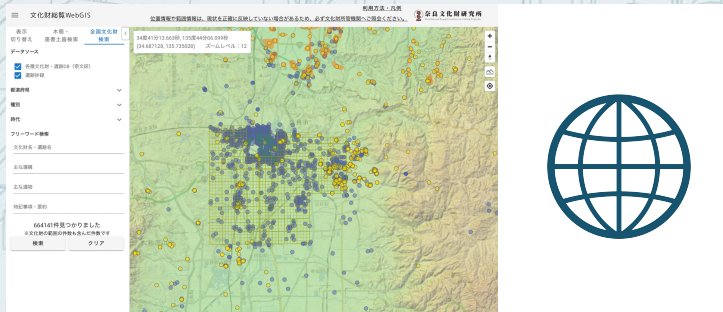
MapTiler



MIERUNE BASE



QGIS



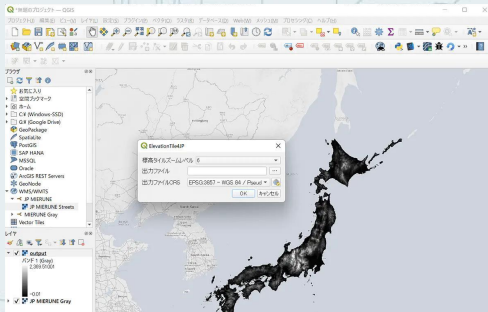
WebGIS



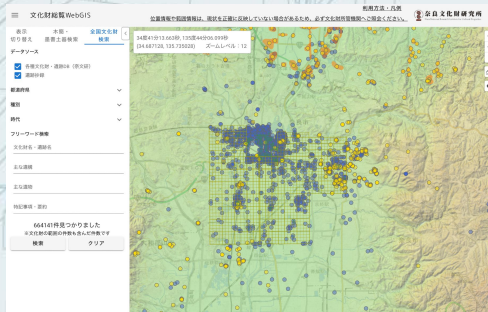
MapTiler

- As an agent in Japan, MIERUNE provide supports for MapTiler products in Japan
- Create beautifully styled maps

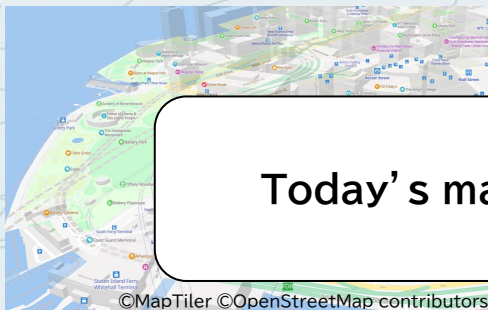
MIERUNE BASE



QGIS



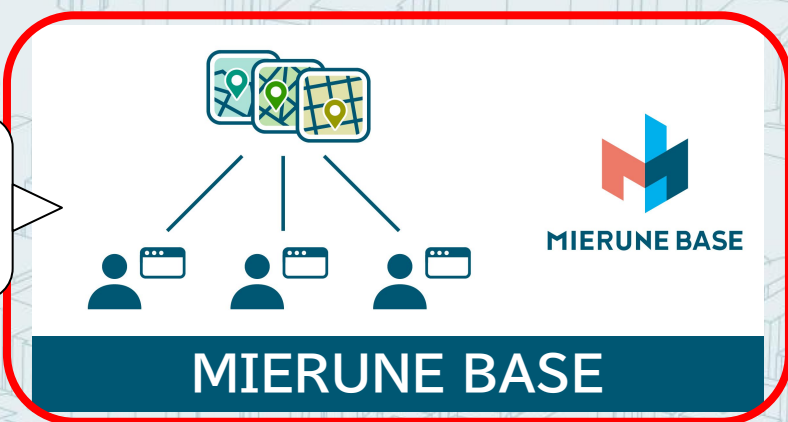
WebGIS



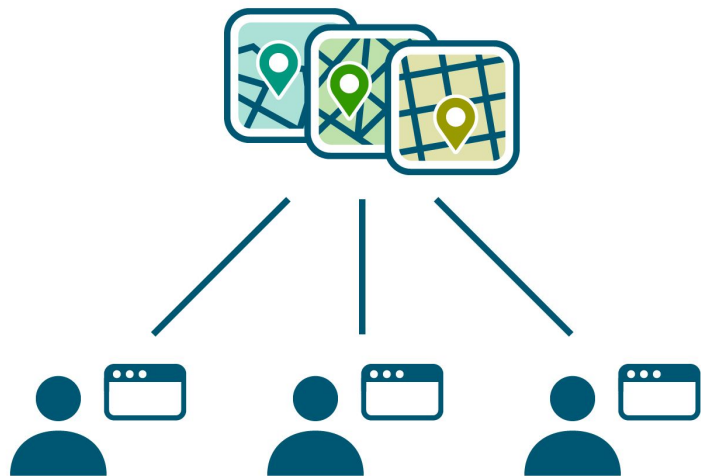
©MapTiler ©OpenStreetMap contributors

MapTiler

Today's main topic!



MIERUNE BASE



Geospatial SaaS

Store GIS-data in
MIERUNE BASE, share
and serve them

You can upload/update data into/in **MIERUNE BASE**. Members can access the canonical data in the cloud.



Store your data, create your maps.
Serve them in your organization.



Organization admin



- Upload/Update data
- Create maps

Organization members



- Get data
- View maps

You can design maps with your and preset data, and publish maps to Internet.



Store your data, create your maps.



MIERUNE BASE user

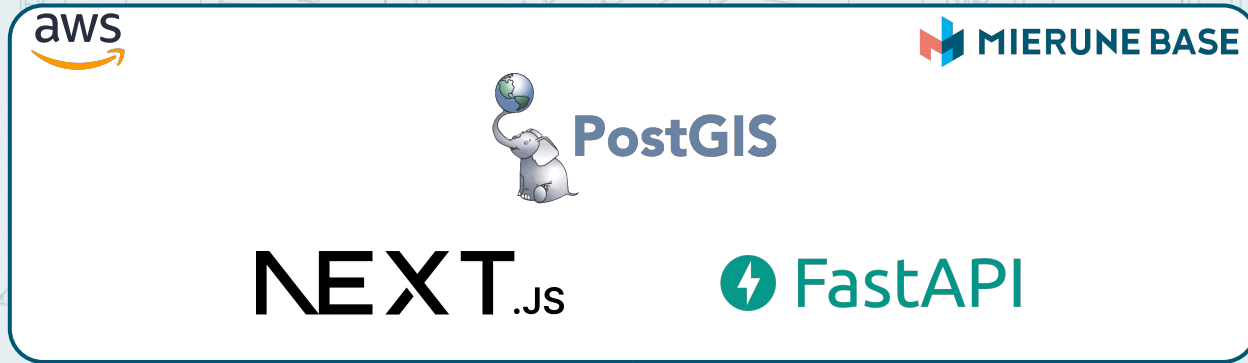


- Upload/Update data
- Create maps

Internet

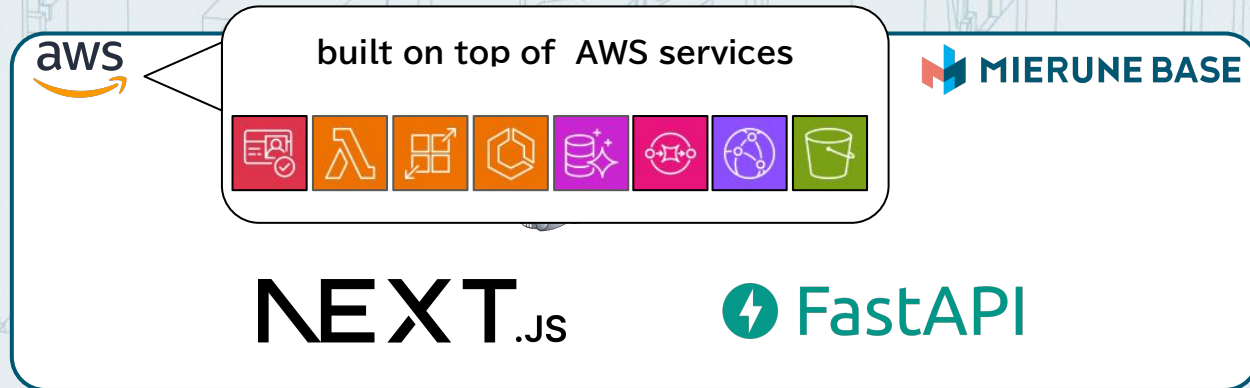


- View maps



GIS data/maps





GIS data/maps



aws

MIERUNE BASE

One of the most important
in this architecture



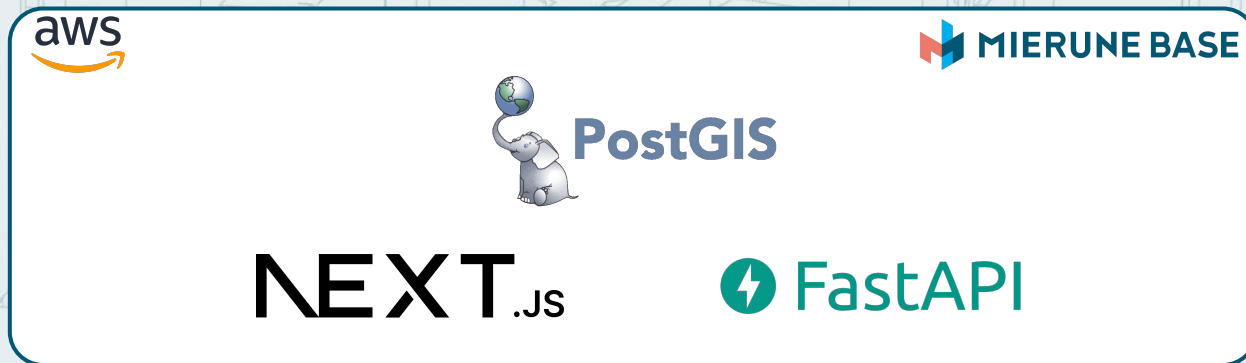
PostGIS

NEXT.js

FastAPI

GIS data/maps

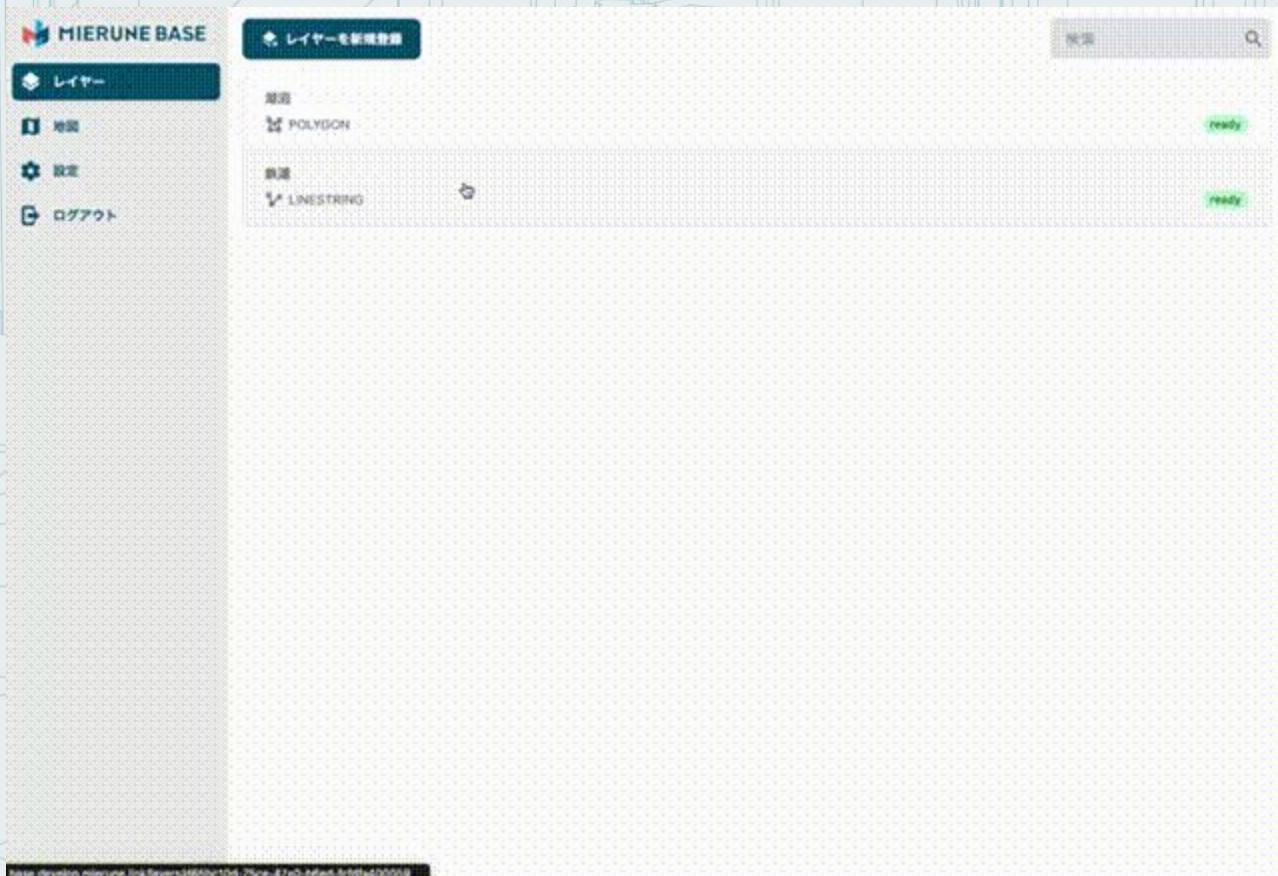




Maximize performances in serving GIS data by our dynamic tiling techniques.

GIS data/maps





MIERUNE BASE

レイヤー

- 地図
- 設定
- ログアウト

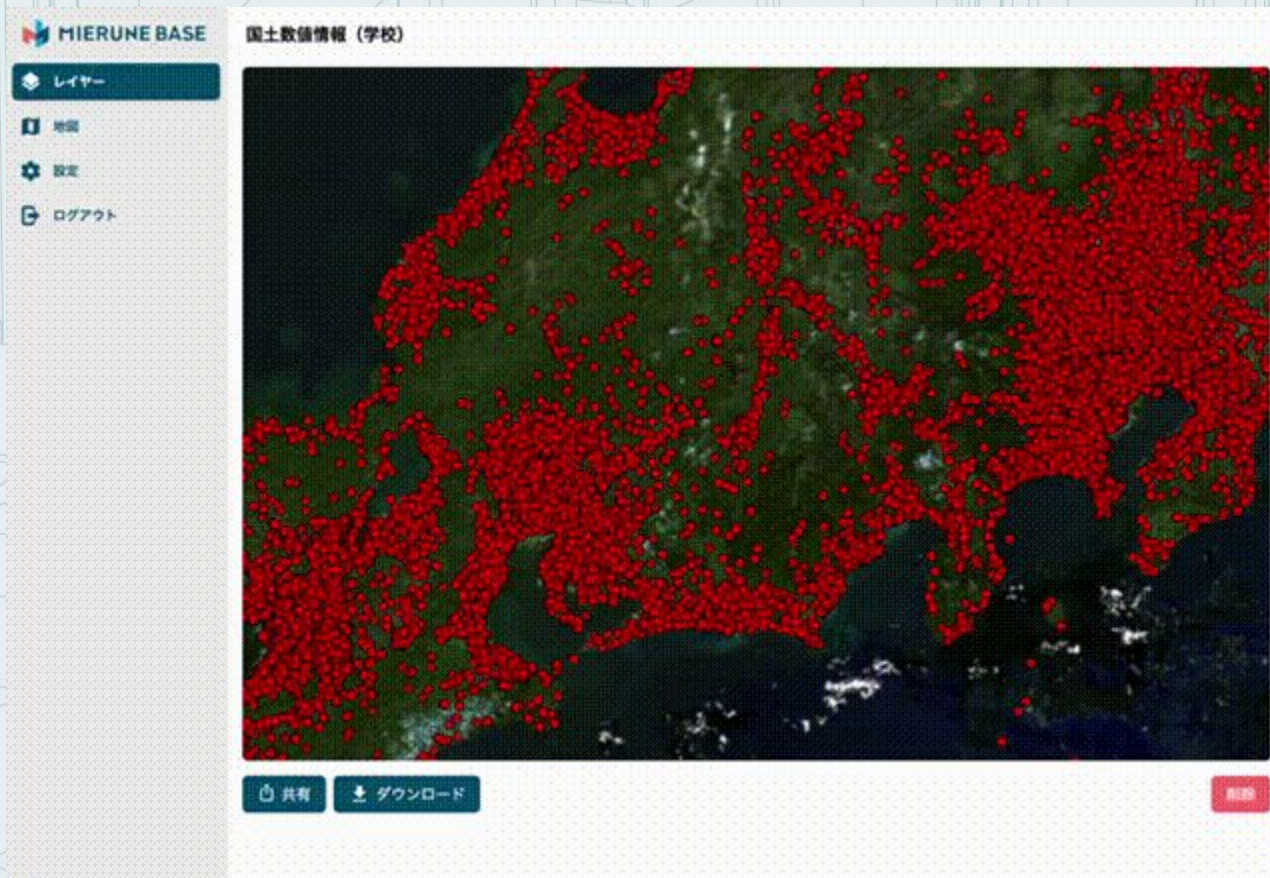
レイヤーを新規登録

検索

名前	タイプ	ステータス
POLYGON	POLYGON	ready
LINESTRING	LINESTRING	ready

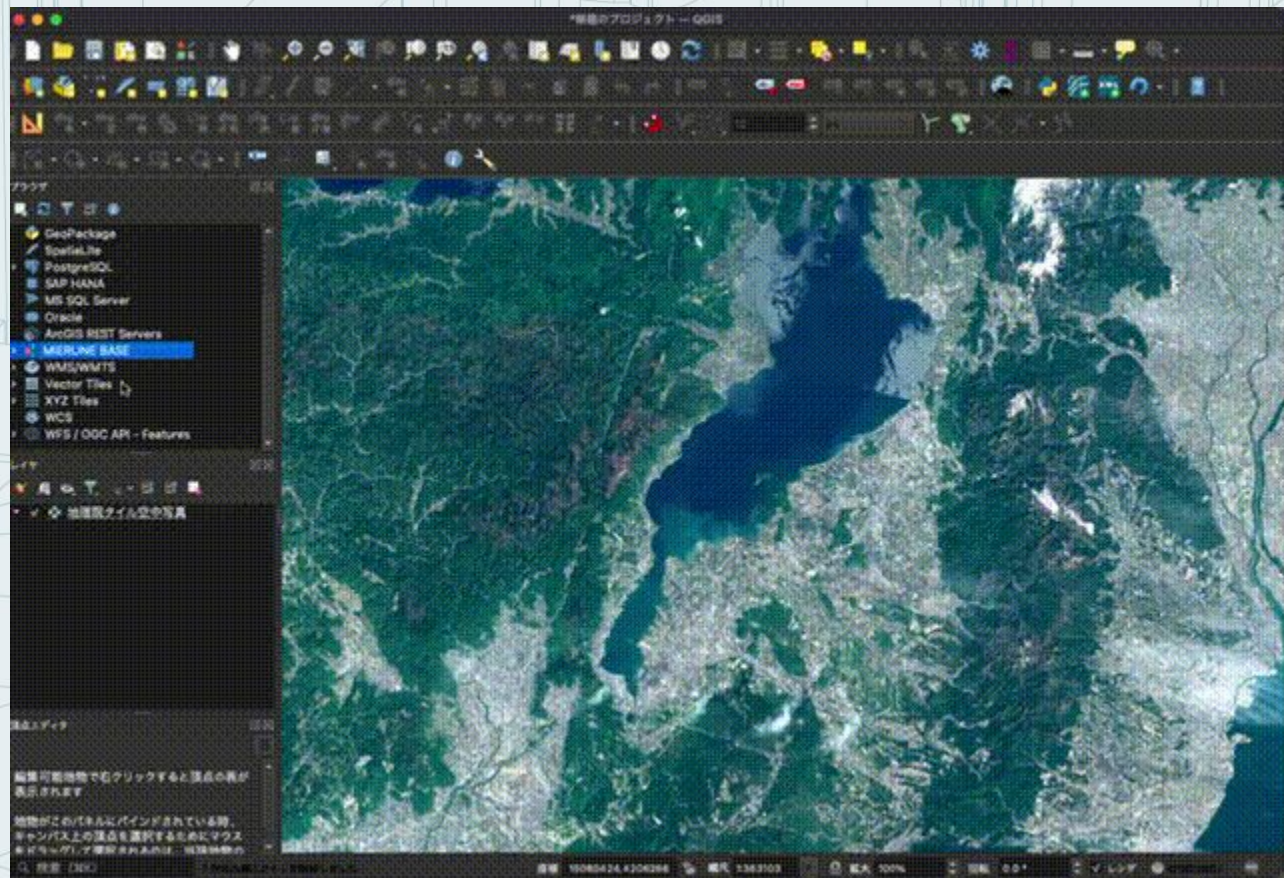
変更

base develop mierune link/layers/1650c1109-79ce-47e0-b6e0-8101a500099



The screenshot displays the MIERUNE BASE web application interface. On the left, a sidebar contains the MIERUNE BASE logo and a menu with the following items: レイヤー (Layers), 地図 (Map), 設定 (Settings), and ログアウト (Logout). The main content area is titled "国土数値情報 (学校)" (National Numerical Information (Schools)). It features a satellite-style map of Japan with numerous red circular markers indicating school locations. At the bottom of the map area, there are three buttons: "共有" (Share), "ダウンロード" (Download), and "印刷" (Print).

MIERUNE BASE: Demo - QGIS integration





MIERUNE BASE

Under developing,
Please wait for information!



Change the World,
with Geospatial.