

# Lesson 4

**Cells: Standard 4: Cellular Energy  
Chloroplasts and Photosynthesis**

# Agenda

1. Warm-up: self-evaluate lab report, turn-in
2. Chloroplast/Photosynthesis Mini-Lesson
3. Cell Craft
4. Start Homework

# Warm-up

## HW: Chloroplast Practice (GC)

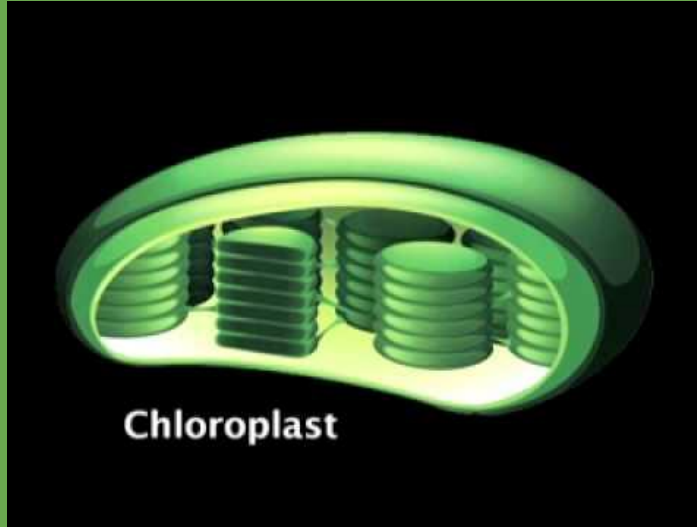
1. Write down your homework. (We will come around and check).
2. Open Gummy Bear Lab Report
  - complete self-evaluation on rubric
3. Turn in
  - Transport within Cell Membrane Notes
  - Gummy Bear Lab
  - Gummy Bear Lab Report

# Chloroplast Mini-Lesson

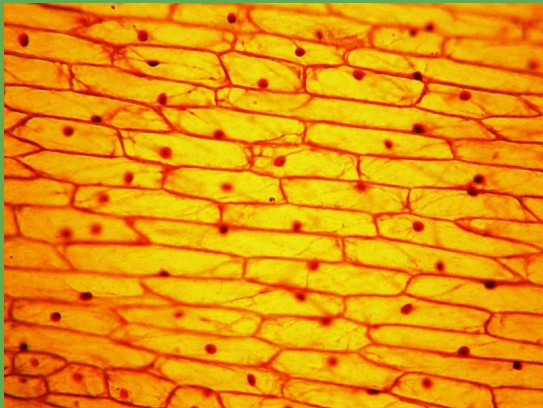
## Chloroplast Tour



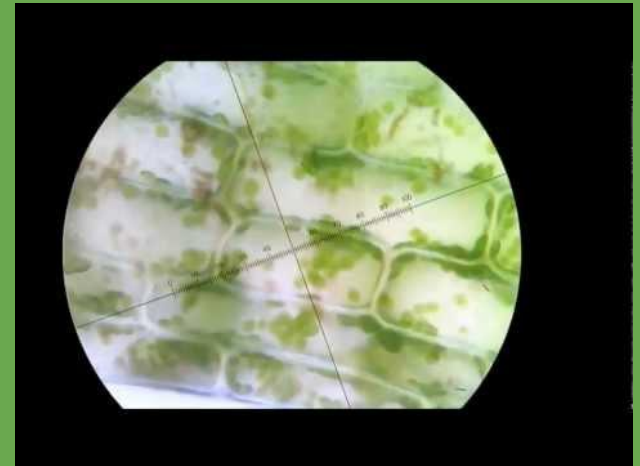
Onion Root Cells



Elodea Cells



VS.



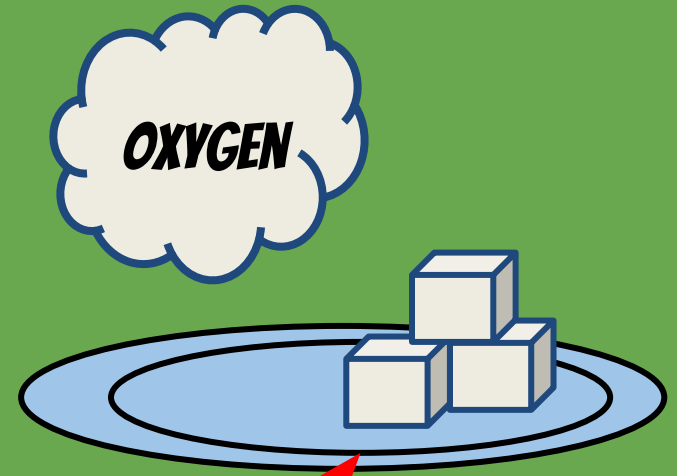
# Photosynthesis

**SUGAR**

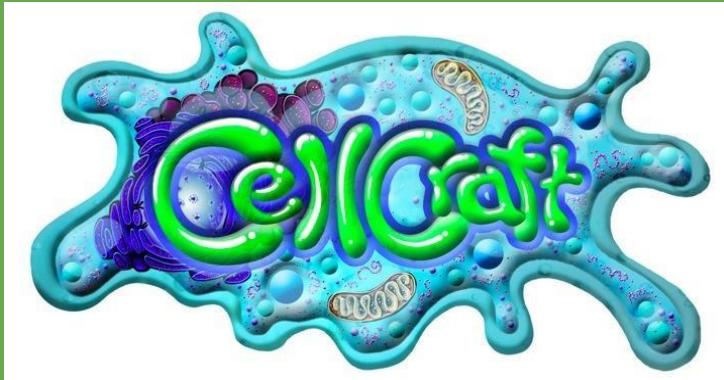
- **CARBON DIOXIDE**
- **WATER**

**PUT IN CHLOROPLAST  
EXPOSE TO SUNLIGHT**

**OXYGEN**



# Cell Craft



Keep Tab Open!



CELL CRAFT LOGBOOK /20

## ORGANELLES/STRUCTURES

STRUCTURE	FUNCTION IN CELL	GAME ABILITIES
<b>1. CENTROSOME</b> 