



PK-3 Credential Information Session

Kremen School of Education and Human Development
For Community College Students



Introduction

Pei-Ying Wu, Ph.D., Assistant Professor and Fansler Chair
Department of Literacy, Early, Bilingual and Special Education
Huggins Center
Fresno State, Kremen School of Education and Human Development

Marci Haas
Coordinator
ECE 24 Unit Certificate Program
P-3 Credential Development Project
CSU, Fresno

Briana Rosales
ECE Specialist PK-3 Credential Navigator
CSU, Fresno



Why Choose Fresno State?

Home of the
Huggins Center
Accredited by
the NAEYC!



More
affordable
than other
options!



Growing job
market!



First campus
in the valley
to offer PK-3
Credential!



FRESNO STATE

Kremen School of Education
and Human Development

Why Pursue a PK-3 Credential?

Specific Expertise...

in early childhood pedagogy to ensure strategies are developmentally appropriate and produce positive outcomes.

Early Identification...

will be aided by teachers who understand ECE practices and milestones as schools serve younger children in TK classrooms.

Early Childhood Educators...

will be trained in trauma informed practices and social emotional strategies meeting the developmental needs of young children

Preliminary PK-3 Early Childhood Education Specialist Instruction Program Overview

Length & Units

- One calendar year
- 3 phases
- Summer, Fall, Spring
- 40 units

Clinical Practice

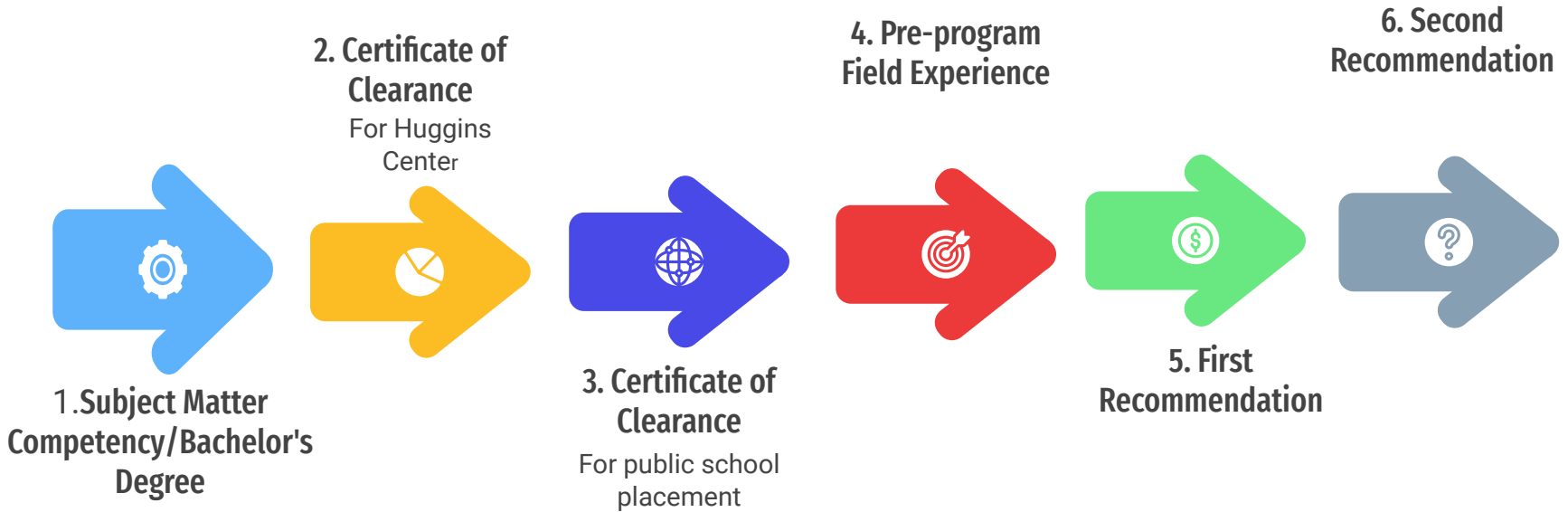
- Preschool
- Transitional Kindergarten
- K-3rd grade

Pathway & Delivery Model

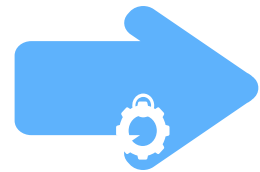
- Cohort model
- Traditional Pathway Option

*Available in May 2024 pending approval from CTC!

Twelve Admission Requirements (Attachments)



Twelve Admission Requirements (Attachments) Cont.



7. Admission Interview and Personal Narrative



8. TB Risk Assessment



9. Mandated Reporter Certificate

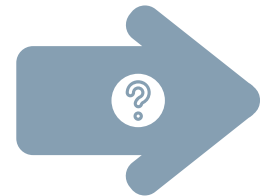
For Huggins Center



10. Mandated Reporter Certificate
For Public Schools



11. Candidate Commitment Form



12. Unofficial Transcripts & US Constitution

*GPA of 2.67 or higher overall or 2.75 or higher in the last 60 units is needed. (If you do not meet this requirement, you still have an opportunity for admission by completing a Special Consideration Form and attaching it with your application.)

[*Link to Application/Admission Process Checklist](#)

[*Fresno State PK-3 Application Checklist](#)

Subject Matter Competency

Can be met in two ways:

Option A: Degree or higher in one of the following majors:

Child Development

Child and Adolescent Development

Human Development

Early Childhood Education

Child and Family Studies

Human Development and Family Science

Family Science

Early Childhood Studies

Child, Adolescent, and Family Studies

or

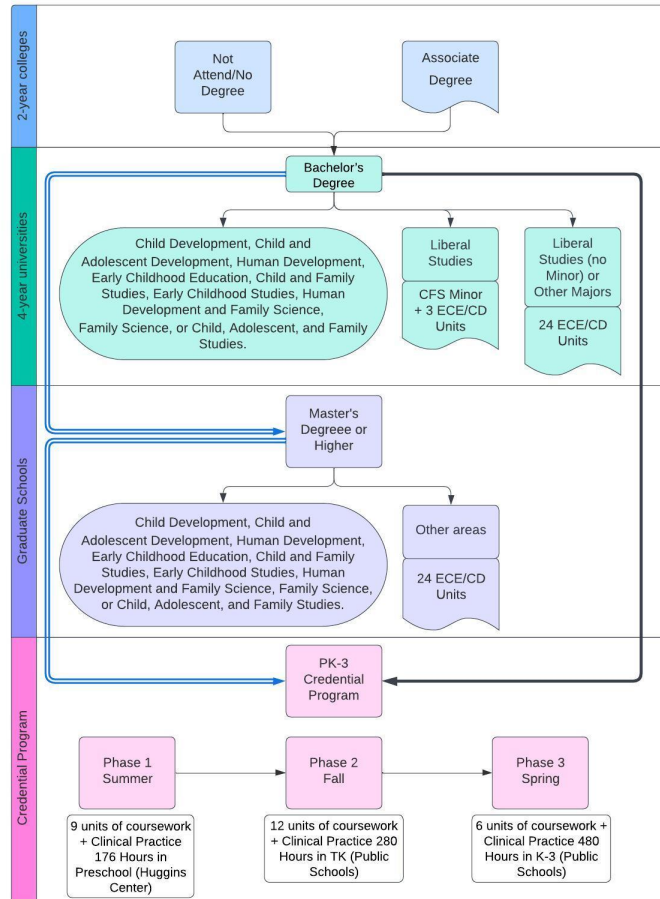
Option B: Additional 24 units

Possess a baccalaureate degree (in a major not listed in Option A) **AND**

24 units of Child Development/Early Childhood Education coursework (must be degree applicable)

[CSU Fresno's 24 unit ECE certificate program](#)

Different Pathways



Community College Pathways

- **Associates for Transfer in Early Childhood Education (ECE)**
 - Transfer to CSU Fresno
 - Bachelors in Child Development or related (the majors listed on SMC slide)

OR

- Bachelors in Liberal Studies
 - » Minor in Child and Family Studies (CFS)
 - Will need 3 more ECE/CD units (1 more class)
 - » No Minor **OR** Bachelors in other majors
 - Will need 24 ECE/CD units

Community College Pathways Cont.

- **Associates for Transfer in Elementary Education**
 - Transfer to CSU Fresno
 - Bachelors in Liberal Studies
 - Minor in CFS plus 3 ECE/CD units (1 more class)
 - No minor (will need 24 ECE/CD units)
 - Bachelors in Child Development or related (the majors listed on SMC slide)

OR

- 24 unit ECE certificate program through CGE (cannot be a Fresno State student & enrolled in CGE at same time)
- <https://cge.fresnostate.edu/programsinstitutes/earlychildhood.html>

Coursework

- **Standards:**

- PK-3 ECE Specialist Instruction Teaching Performance Expectations (PK-3 ECE TPEs)
- NAEYC Professional Standards and Competencies for Early Childhood Educators

- **Course Sequence:**

- A series of 11 courses (3 in the summer, 5 in the fall, and 3 in the spring)
- Must be taken in order

Course Sequence/Roadmap

PK—3 ECE Specialist Credential

PHASE 1 | 9 units

LEE 100	Developmental Theory: Context, Culture & Learning in PK-3 (Seminar & 88 hrs in PreK)	3
LEE 101	Developmentally Appropriate Learning Environment, Curriculum & Assessment in PK-3 (Seminar & 88 hrs in PreK)	3
LEE 102	Positive Guidance and Family Partnerships in PK-3	3

Clinical Practices: Huggins Center

11 weeks (Start on Monday after graduation, end the 1st week of August): 4 hours per day clinical practice for 4 days, or 8 hours per day for 2 days per week =176 hours

This program offers clinical equivalency options that may allow teacher candidates to not have to be placed in a different classroom from the one they currently work in for their clinical practice experience. See PK-3 Program Clinical Equivalency Requirements and Verification for details.

Course Sequence/Roadmap Cont.

PK-3 ECE Specialist Credential

PHASE 2 | 16 units

LEE 110	Literacy Foundations in PK-3	3
LEE 108	Effective Mathematics Teaching and Learning in PK-3	3
LEE 111	Culturally and Linguistically Sustaining Pedagogy in PK-3	3
SPED 104	Inclusive Education in PK-3	3
LEE 105	Clinical Practice Experience in PK-3 (A) * 280 hours in TK	4

Re-take the RICA exam as often as needed until you pass. ***GPA 3.0 required all phases with no D or F grades.***

Clinical Practice: Public schools: TK (280 hours)

This program offers clinical equivalency options that may allow teacher candidates to not have to be placed in a different classroom from the one they currently work in for their clinical practice experience. See PK-3 Program Clinical Equivalency Requirements and Verification for details.

RICA Support

The RICA Exam will be taken in Phase 2 or 3 until you pass:

- Fresno State offers <https://study.com/> at no cost to credential students
- The CTC website also offers additional resources:
https://www.ctcexams.nesinc.com/TestView.aspx?f=HTML_FRAG/CA_RICA_Written_PrepMaterials.html

Course Sequence/Roadmap Cont.

PK—3 ECE Specialist Credential

PHASE 3 | 15 units

LEE 112	Disciplinary Literacies & Integrated Curriculum in PK-3	3
LEE 106	Science, Technology, Engineering, Arts, and Mathematics (STEAM) in PK-3	3
LEE 107	Clinical Practice Experience in PK-3 (B) *420 hrs in K-3rd	9

Clinical Practices: Public Schools: K-3rd (480 hours)
Apply for preliminary credentials upon successful completion of coursework; 3.0 GPA within 10 years prior; Pass the RICA

*Need to pass the Site Visitation Project and Teaching Sample Project of Fresno Assessment of Student Teachers (FAST)

*Complete Individual Development Plan (IDP) and Induction Program

PK-3 ECE Specialist Instruction Credential Interest Survey

Please scan this QR code to fill out the PK-3 Credential Interest Survey!



Thank You!

Q&A

Frequently Asked Questions

**For additional questions contact us via
email:**

ece-certificate-program@mail.fresnostate.edu