

Vagabonds:
The Stanford Media
Preservation Lab Moves
2013-2019

AMIA 2018

Stanford Media Preservation Lab (SMPL)

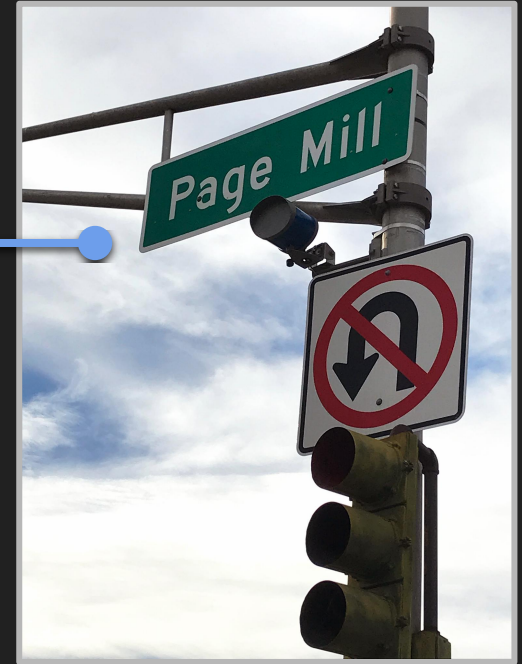


<http://bit.ly/aboutsmpl>

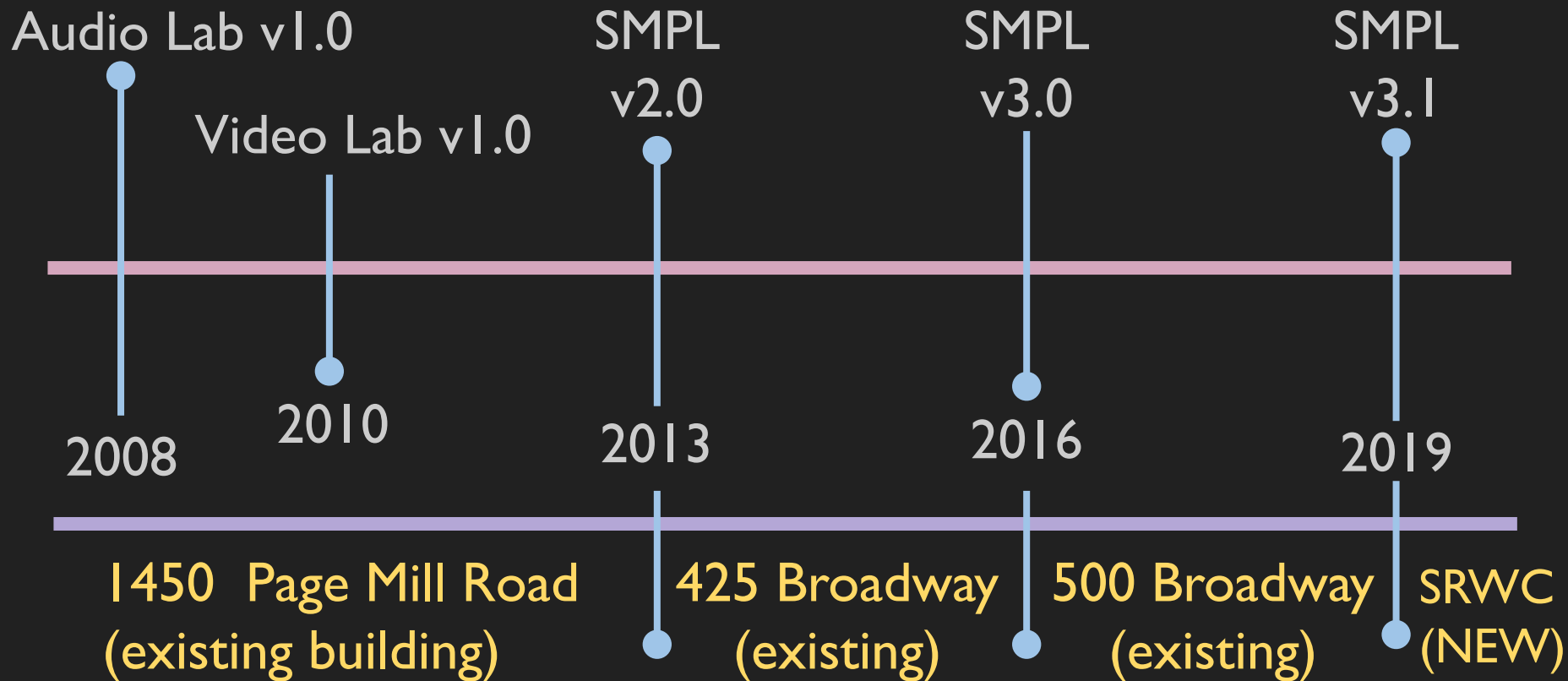
Our Off-Campus Legacy



2 miles
from campus



Locations and Iterations



Stanford Redwood City

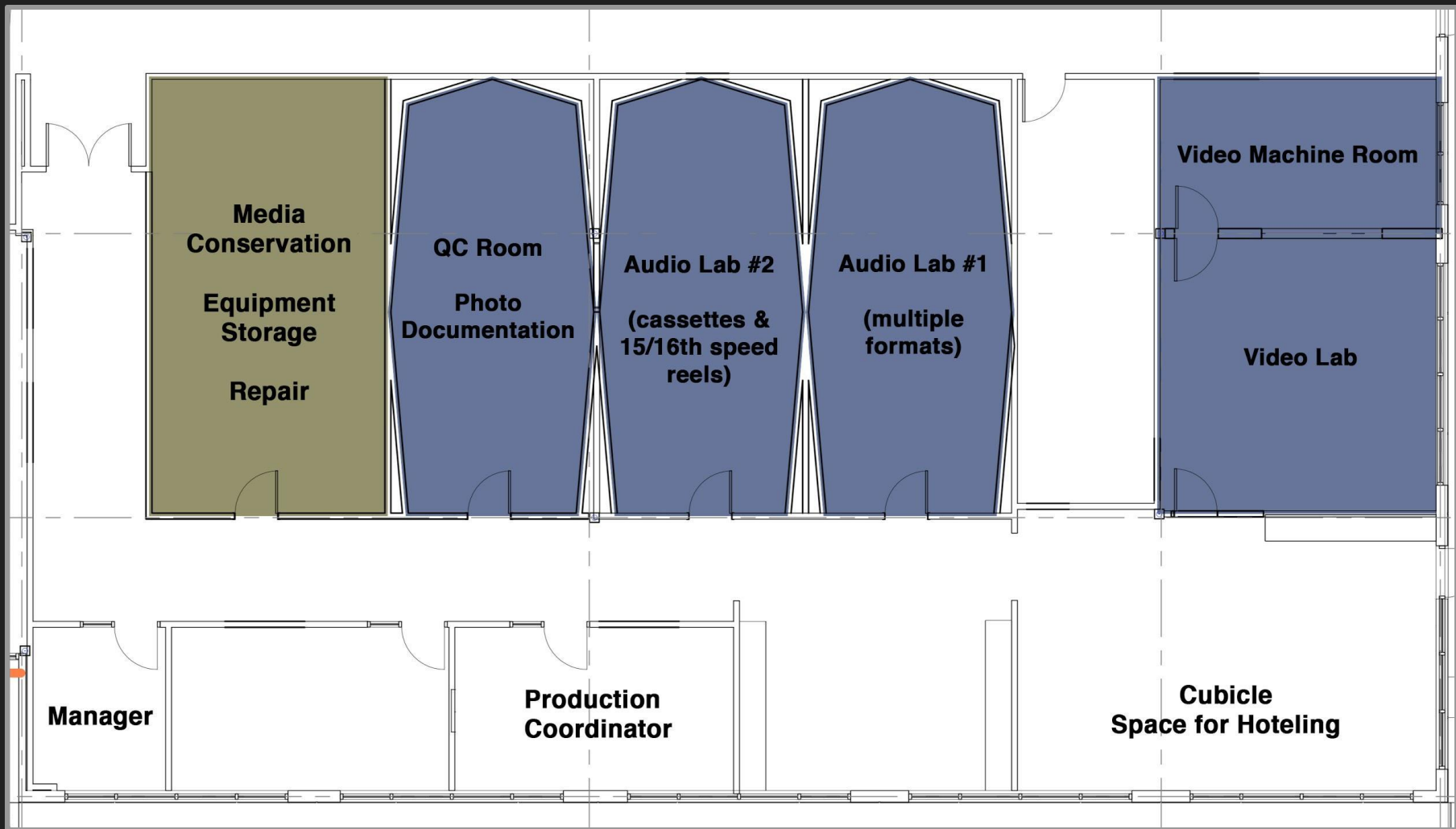


(construction in progress)

Characterizing our Installations

- Large collaborative efforts
- These projects are resourced
- lessons learned and improvements made





Stakeholders

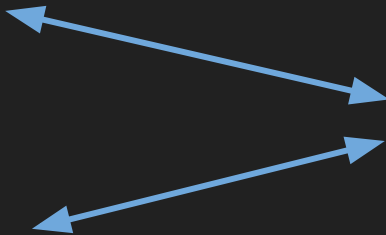
- Land, Buildings & Real Estate
- Campus architects (exteriors)



- Building architects (interiors)



- **Library Facilities**



- Builders

- Library staff occupants



Defining our Facilities Requirements

- *SMPL Program Statement (2015)*
 - 40 pages, 5 appendices
 - SMPL Purpose and mission
 - Summary of all requirements for our labs, including facilities
- Who read it?

Planning Documentation

- Floor plans
- Electrical system specs
- Electrical installation plans
- Lighting plans
- HVAC plans
- Data / telecom plans
- Wall construction specs
- Door construction/install
- Ceiling materials
- Floor coverings
- Equipment lists
- Electrical usage estimates
- Acoustical treatments
- Finishing plans
(paint, coverings, etc.)
- Furniture plans
- Fire suppression and plumbing
- Security plans and equipment

NOTES

- ROOM #114:
 - PLUMBING REQUIRED FOR SHOWER/ EYEWASH STATION.
 - CHEMICAL STORAGE CABINETS TO BE DUCTED.
 - NO REGULAR HVAC SYSTEM EXHAUST VENTILATION FOR FUME HOOD, CHEMICAL STORAGE, SNORKEL SYSTEM AND SOUND CLOSET.
- LV FILM TO BE IM PRESTIGE SERIES PR03.

LEGEND

--- LV FILM ON WINDOWS

TEMPERATURE AND HUMIDITY CRITERIA

69 +/- 3, 40% +/- 2% RH

70 +/- 2, 50% +/- 5% RH

65-70 Degree F, 30-50% RH

65-70 Degree F, 30-50% RH

65-70 Degree F, 30-50% RH

65-70 Degree F, 30-50% RH

65-70 Degree F, 30-50% RH

65-70 Degree F, 30-50% RH

65-70 Degree F, 30-50% RH

65-70 Degree F, 30-50% RH

65-70 Degree F, 30-50% RH

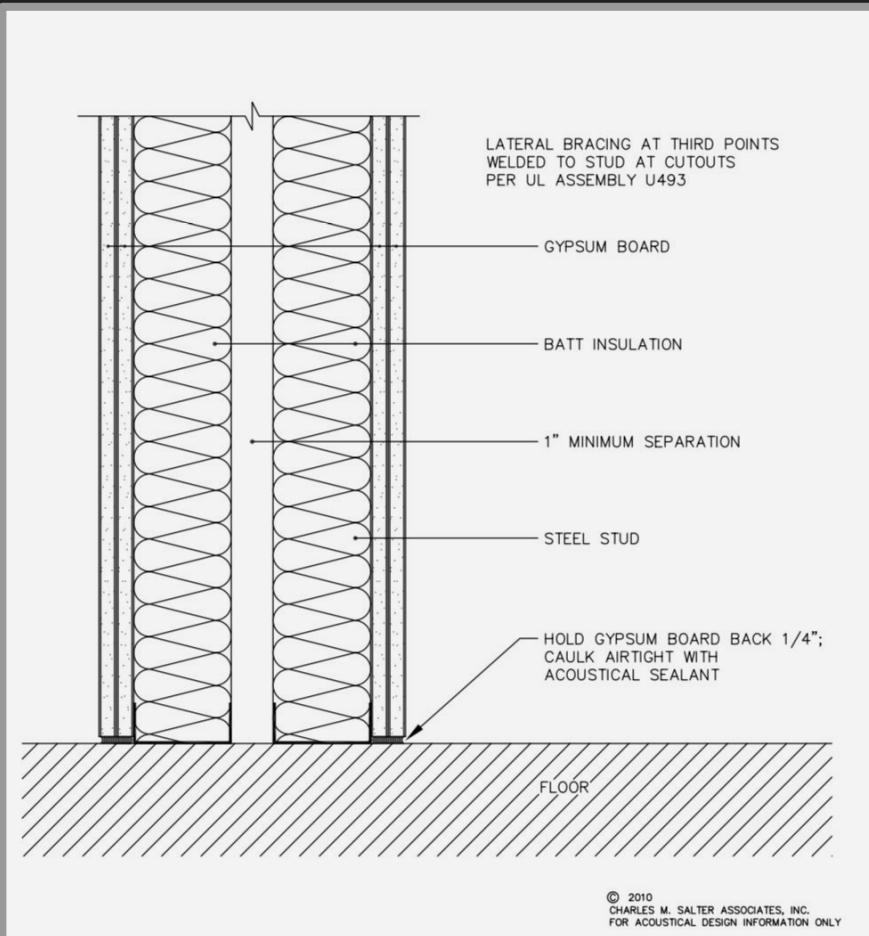
65-70 Degree F, 30-50% RH

65-70 Degree F, 30-50% RH

65-70 Degree F, 30-50% RH

Consultants

- Room construction
- Acoustics
- Electrical system
- Walls, doors, ceiling materials



DOUBLE STUD
ACOUSTICAL WALL

FIGURE D

1890
1.1.2.2

PNS
G, E



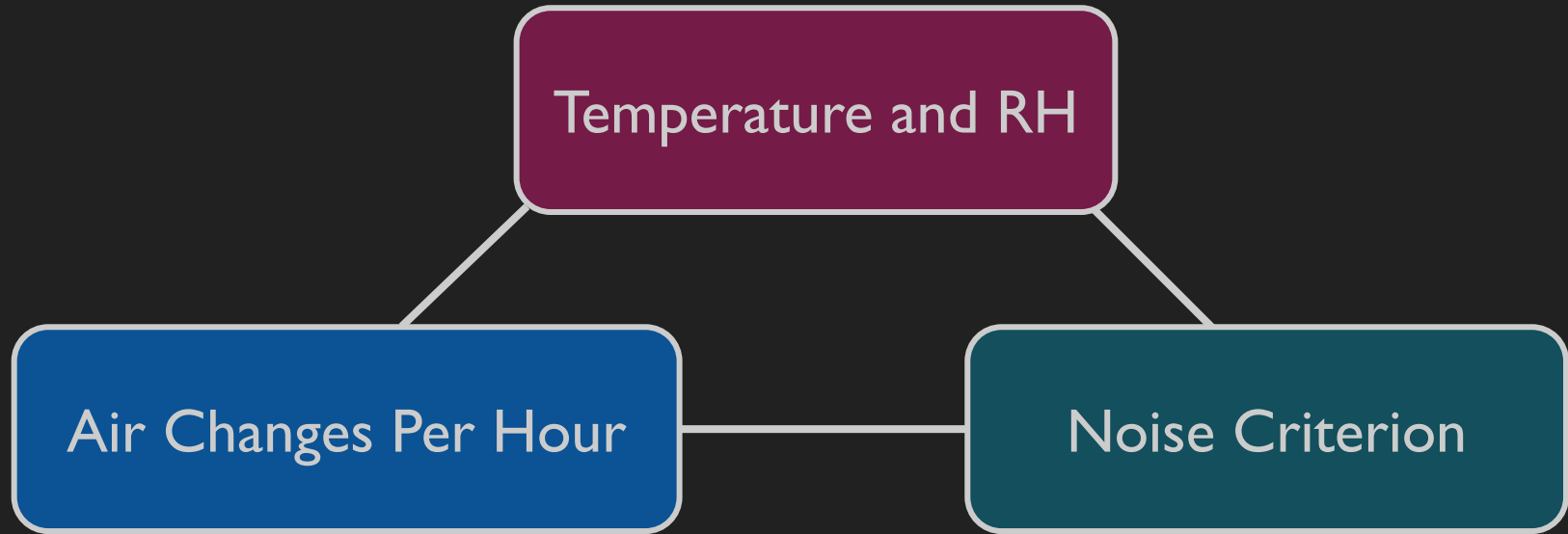
Dedicated
SMPL Panel

Dedicated SMPL
Isolation
Transformer

Electrical Installation

- Building safety
- Power problems can damage machines
- Power problems can negatively impact the quality of your work
- Power problems can impact efficiency

Heating, Ventilation & Air Conditioning

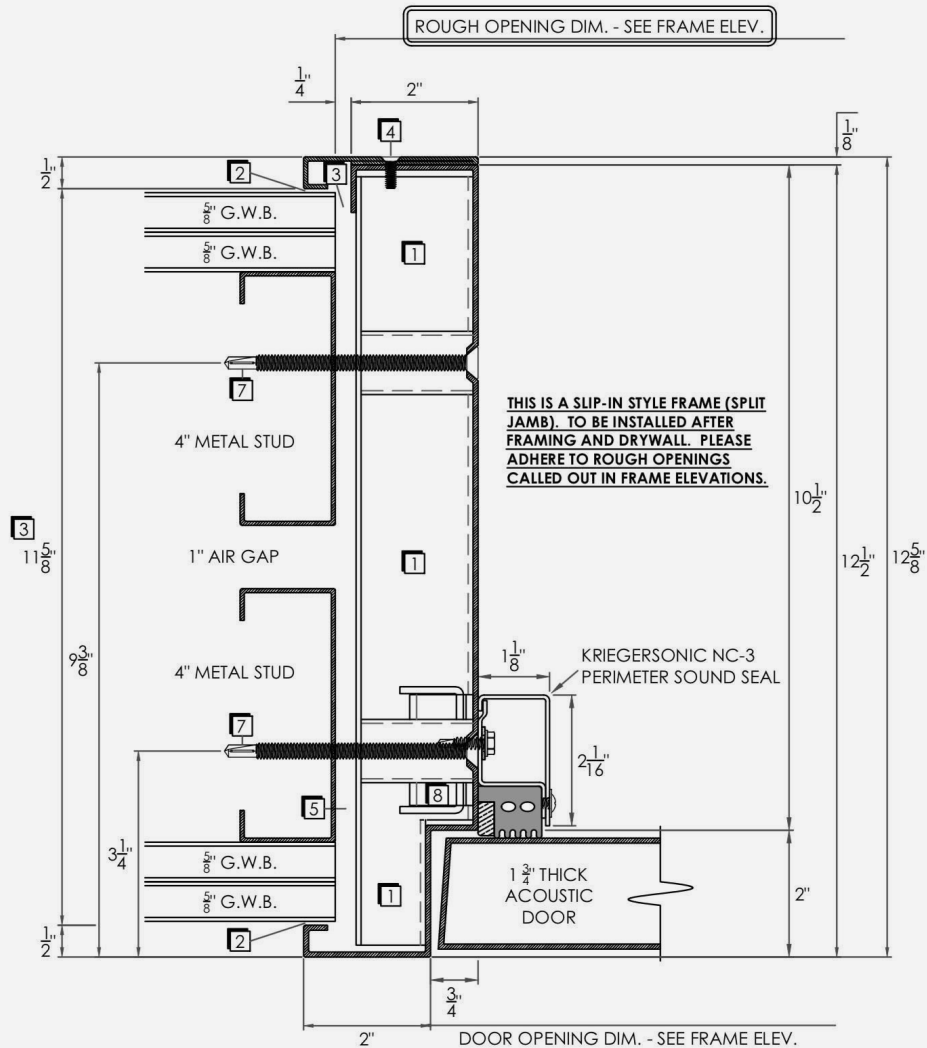


A hole between the labs, above the ceiling



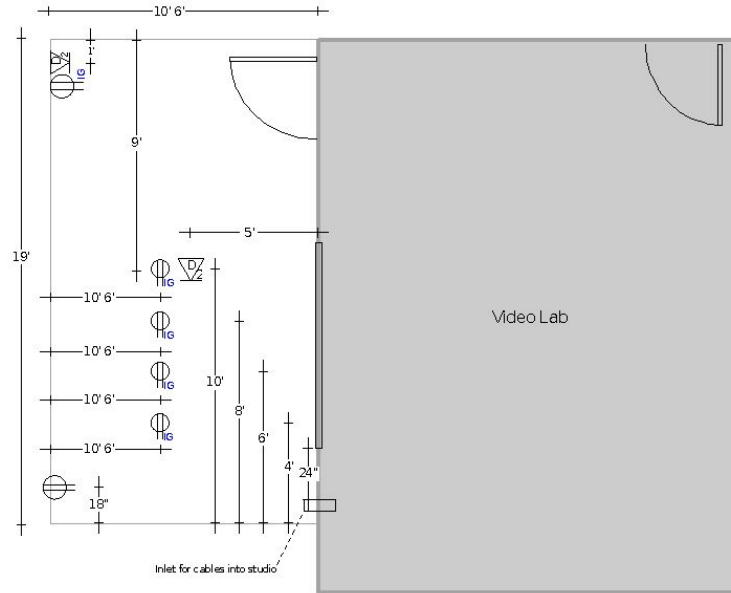
Doors and Frames

- Acoustical specialty doors
- Limits sound ingress/egress
- STC ratings 53+



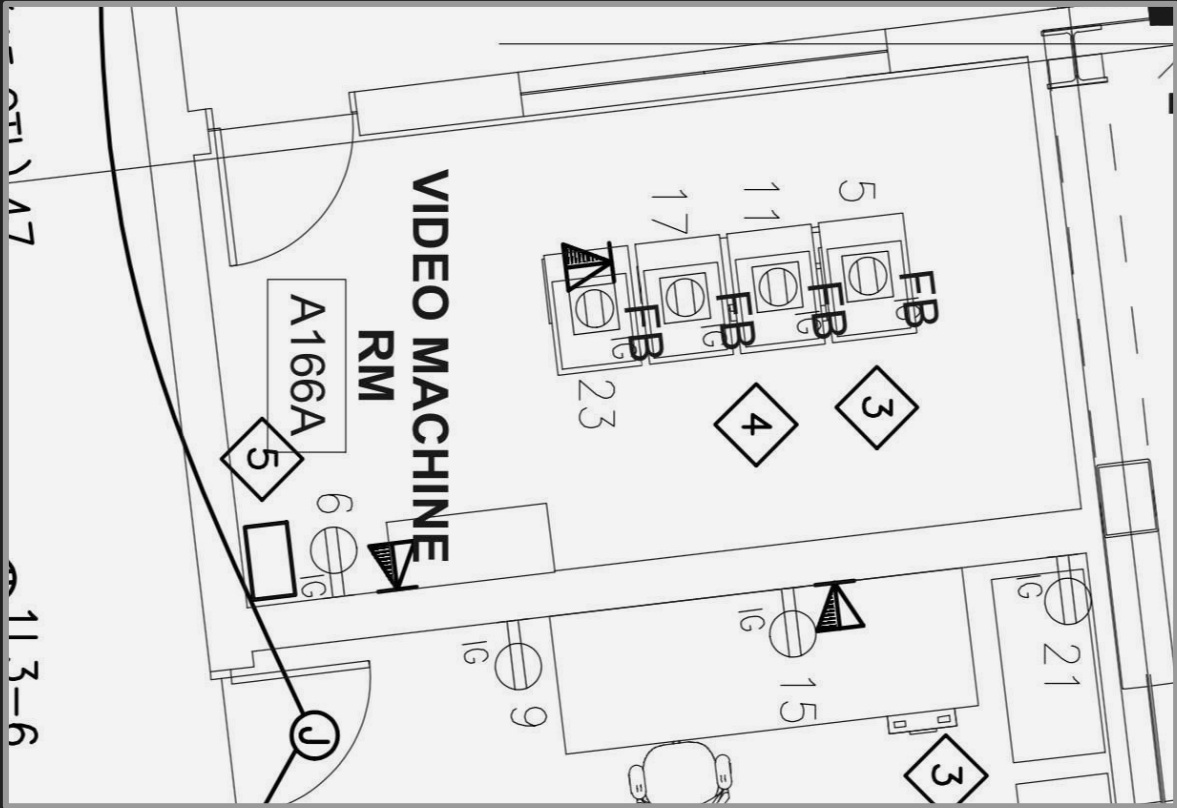
The 11th Hour

Stanford Media Preservation Lab
415 Broadway
Room 166, Machine Room
Electrical & Telecom
6/09/17



*Prepared by Michael Angeletti:
mangelet@stanford.edu, 650-725-3604

The 11th Hour



Some Points of Advice

- Compromise is important
- Hit hard on the foundational stuff and be okay with some other things sliding
- Decision makers ~~may~~ will be very far removed from your reality
- There may be an enthusiasm gap regarding AV preservation

Thanks!

Email: mangelet@stanford.edu

Resources: bit.ly/smpl-res