

Welcome Tasks: **END Time 10:00**

#1: Attendance Survey: Attendance Survey has a timestamp, so be sure to enter survey before the final bell. If you are tardy, include an explanation.

#2: Open your Google Calendar and transfer due dates for upcoming assignments and presentations onto your calendar.

#3: Share your Standard/Skill Document with your parents/guardian.

#4: Groups 3A, 3B, 3C need to share Group Agreements with netotucker@gmail.com ASAP

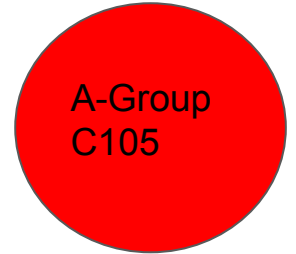
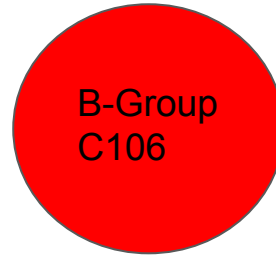
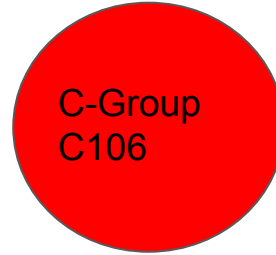
A-B-C Group Discussion: **END Time 10:30**

***Annotation check.** Have your annotations easily accessible so we can check them.

Using your Google Slide deck on *F451*, each group will present their analysis of their specific topic: characters, setting and figurative language.

Take notes in your digital notebook (English Section). Your notes should reflect a synopsis of your discussion and an example of a claim, evidence and reasoning from each lens.

DO NOT just copy and paste from the original document.



Neto/Tucker Circle Close Read: **END Time 11:00**

Rainbow-up

Materials Needed: Pen/pencil,
post-its, and *Fahrenheit 451*

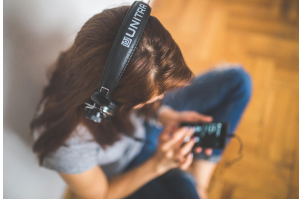
Academic Students C106

Honor English Students C105



Text Interaction: **END Time 11:30**

C105



30 minutes to continue reading and annotating.

C106



-Materials: Pen/pencil, post-its, and *Fahrenheit 451*

Course Selection: **END Time 1:50**

Freshmen with Neto- Counseling Center

Sophomores with Tucker- Library

Station Rotation Time: **END Time 3:00**

C105- (Acad) Self-evaluation
(H) Science
Flipped Lesson

Quiet Time

Standard/Skills	Date:Self Assessment Code	Links to Evidence
Assess the quality, social, and economic implications attached to food sold at the grocery store.		
Demonstrate understanding of the supermarket, nutrition labels, and food safety systems as it relates to the fundamental needs of life.		

C105-Coding on Khan
Academy

Finish Intro to JS: Drawing &
Animation–**Due Friday**

Group Rotation
Starting Point:

Group A- Self-Eval
Group B- Khan Acad
Group C- Text Anal

C106-A-B-C Text Analysis
Work on your collaborative analysis.

-[Group A](#)
-[Group B](#)
-[Group C](#)

***25 minute rotations**

Circle-up C105: **END Time 3:30**

Project Introduction

- Read
- Make notes
- Ask questions



Clean-Up Crew: **END Time 3:35**

Monday: Group 1A & 2A

Tuesday: Group 3B & 1B

Wednesday: Group 2B & 1C

Thursday: Group 3A & 3C

Friday: Group 2C

****If you have to leave early for some reason,
you will have to spend 10 minutes during lunch
organizing the Maker-Space**

