



# ▶ 2020 CENSUS AND REDISTRICTING

SANTA CRUZ COUNTY BOARD OF EDUCATION

SEPTEMBER 16, 2021



▶ CENSUS DATA AND REDISTRICTING  
**EDUCATION CODE SECTION 1002**

- County boards of education are required after every Census to:
  1. Review the population data to determine if their voting areas are still within the allowable variance
  2. Make any necessary adjustments to the areas to ensure population balance within legal requirements
- Typically, the data required is released by March 31 of the year following the Census
- Changes to voting areas need to be filed with the registrars of voters for the counties served by the SCCOE Board of Education in advance of the November 2022 election. County offices of education have a deadline of **March 1, 2022**



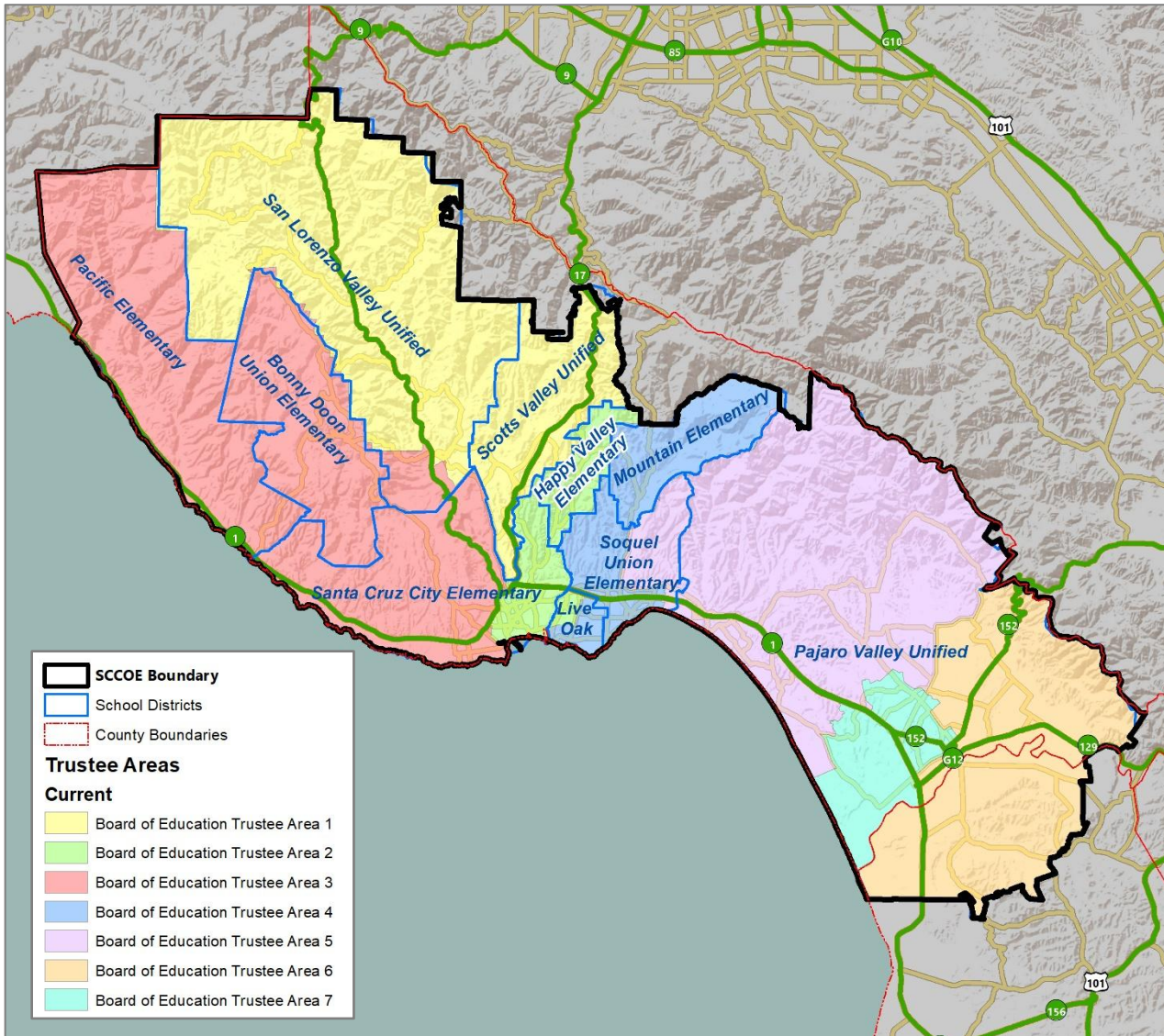
## ▶ CENSUS DATA AND REDISTRICTING

### TIMING OF DATA

- Release of 2020 Census data has been delayed due to the COVID-19 pandemic
- Latest update from the California Department of Finance indicates “validated” 2020 Census data at block level will be released September 20, 2021
- Compresses timeframe for SCCOE and other public agencies who elect by-area to review and adjust their voting areas
- Potential for legislative changes, including changes to primary election date
- No formal process in statute governing the process to adjust trustee areas following each Census



## ► CURRENT TRUSTEE AREAS



Area	Trustee
Trustee Area 1	Sue Roth
Trustee Area 2	Bruce Van Allen
Trustee Area 3	Sandra Nichols
Trustee Area 4	Rose Filicetti
Trustee Area 5	Alyssa Alto
Trustee Area 6	Ed Acosta
Trustee Area 7	Abel Sanchez

► CURRENT TRUSTEE AREAS  
DEMOGRAPHICS

2020 Census, Total Population: 276,668 Ideal Trustee Area Size: 39,524 Total Variance: 7.5%

Trustee Area	Area 1		Area 2		Area 3		Area 4		Area 5		Area 6		Area 7								
	Count / Percentage	TP	%	TP	%	TP	%	TP	%	TP	%	TP	%	TP	%						
Population	40,070			40,028			40,930			39,588			39,165			38,920			37,967		
Population Variance	1.4%			1.3%			3.6%			0.2%			-0.9%			-1.5%			-3.9%		
Hispanic/Latino	8,087	20.2%		4,609	11.5%		10,084	24.6%		9,617	24.3%		8,074	20.6%		30,978	79.6%		31,289	82.4%	
White	24,343	60.8%		30,503	76.2%		24,960	61.0%		25,421	64.2%		27,246	69.6%		5,878	15.1%		4,684	12.3%	
Black/African American	1,113	2.8%		208	0.5%		634	1.5%		341	0.9%		239	0.6%		136	0.3%		173	0.5%	
American Indian/Alaska Native	111	0.3%		141	0.4%		182	0.4%		116	0.3%		128	0.3%		111	0.3%		74	0.2%	
Asian	3,564	8.9%		1,546	3.9%		2,186	5.3%		1,553	3.9%		1,245	3.2%		977	2.5%		1,016	2.7%	
Native Hawaiian/Other Pacific Islander	39	0.1%		46	0.1%		65	0.2%		50	0.1%		46	0.1%		16	0.0%		15	0.0%	
Other	269	0.7%		332	0.8%		298	0.7%		253	0.6%		229	0.6%		163	0.4%		111	0.3%	
Two or More Races	2,544	6.3%		2,643	6.6%		2,521	6.2%		2,237	5.7%		1,958	5.0%		661	1.7%		605	1.6%	

\*Total Population; Source: Census 2020 P.L. 94-171 Redistricting Data Summary Files (Preliminary)

## ▶ CONSIDERATIONS IN VOTING AREAS



Each area shall contain nearly equal number of inhabitants



Follow man-made and natural geographic features, as much as possible



Drawn to comply with the Federal Voting Rights Act



Respect incumbency, if possible



Compact and contiguous, as much as possible



Other local considerations



Respect communities of interest, as much as possible

► DRAFT TIMELINE

DATE	ACTIVITY
September 16, 2021	<b>Board Meeting: Presentation on Process</b>
September 2021	Cooperative Strategies receives 2020 Census data and evaluates population within each voting area of the Board of Education
October 21, 2021	<b>Board Meeting: Presentation on Evaluation of Existing Voting Areas Receive Input on Potential Adjustments</b>
October 2021	Cooperative Strategies prepares potential maps of adjusted Voting Areas
November 11, 2021	Draft Maps Posted to SCCOE Website
November 18, 2021	<b>Board Meeting: Review Initial Scenarios</b>
November 2021	Cooperative Strategies revises scenarios based on Board and Public Input
December 16, 2021	<b>Board Meeting: Review Maps and Conduct Public Hearing</b>
December 2021	Cooperative Strategies revises scenarios based on Board and Public Input
January 2022 (TBD)	<b>Board Meeting (if necessary): Review Maps, Conduct Public Hearing and Board Selection of Map</b>
January – February 2022	Cooperative Strategies sends Final Trustee Area Map and Descriptions to the County Registrars of Voters and County Boards of Supervisors
March 1, 2022	Deadline for submitting changes to County Registrars of Voters and County Boards of Supervisors

A row of yellow school buses is parked in a grassy field under a cloudy sky. A large, stylized, semi-transparent 'S' graphic is overlaid on the image, framing the word 'QUESTIONS' in the center.

# QUESTIONS