

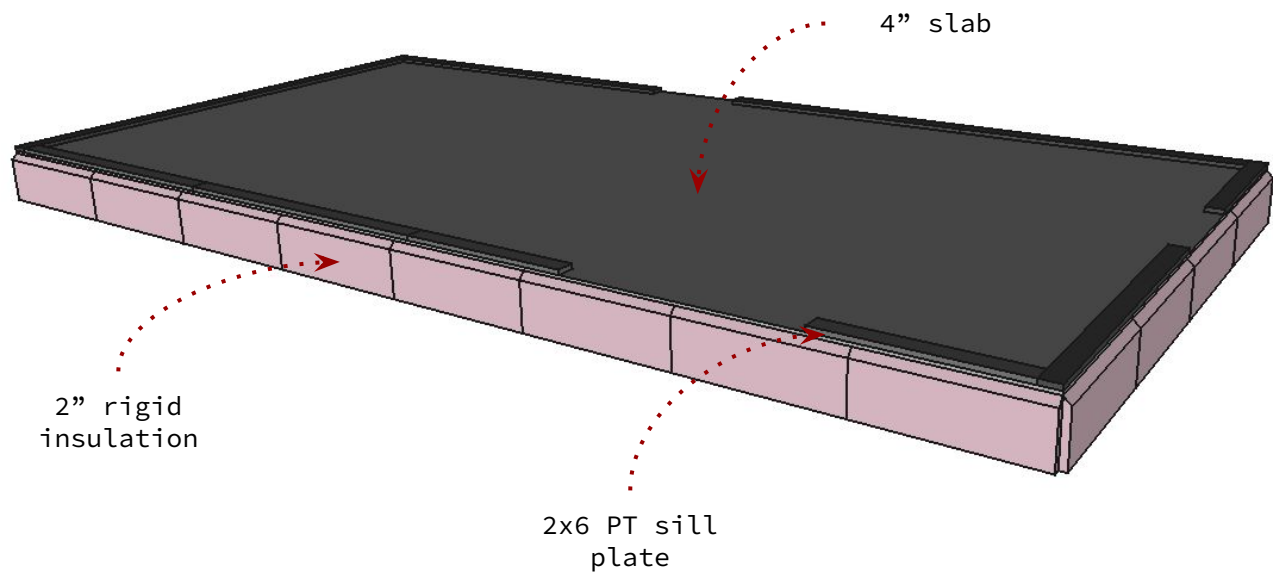
TECHNICAL : FRAMING
FROST PROTECTED SHALLOW FOUNDATION
SEED

Rosebud 3

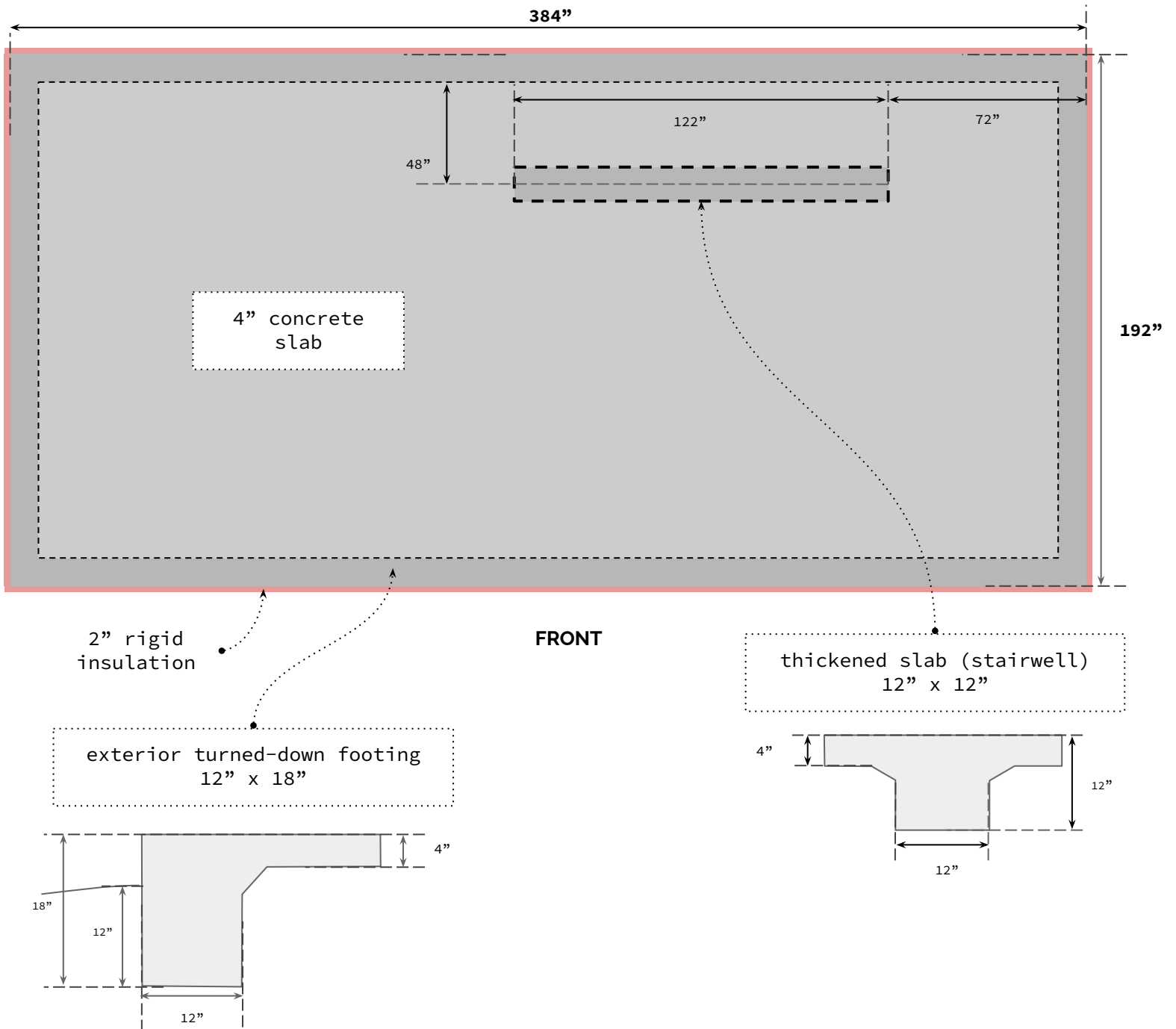
TABLE OF CONTENTS

FROST PROTECTED SHALLOW FOUNDATION : SEED

- [Slab and Footings](#)
- [Detail](#)
- [Anchors](#)
- [Sill Plate](#)



SLAB AND FOOTINGS

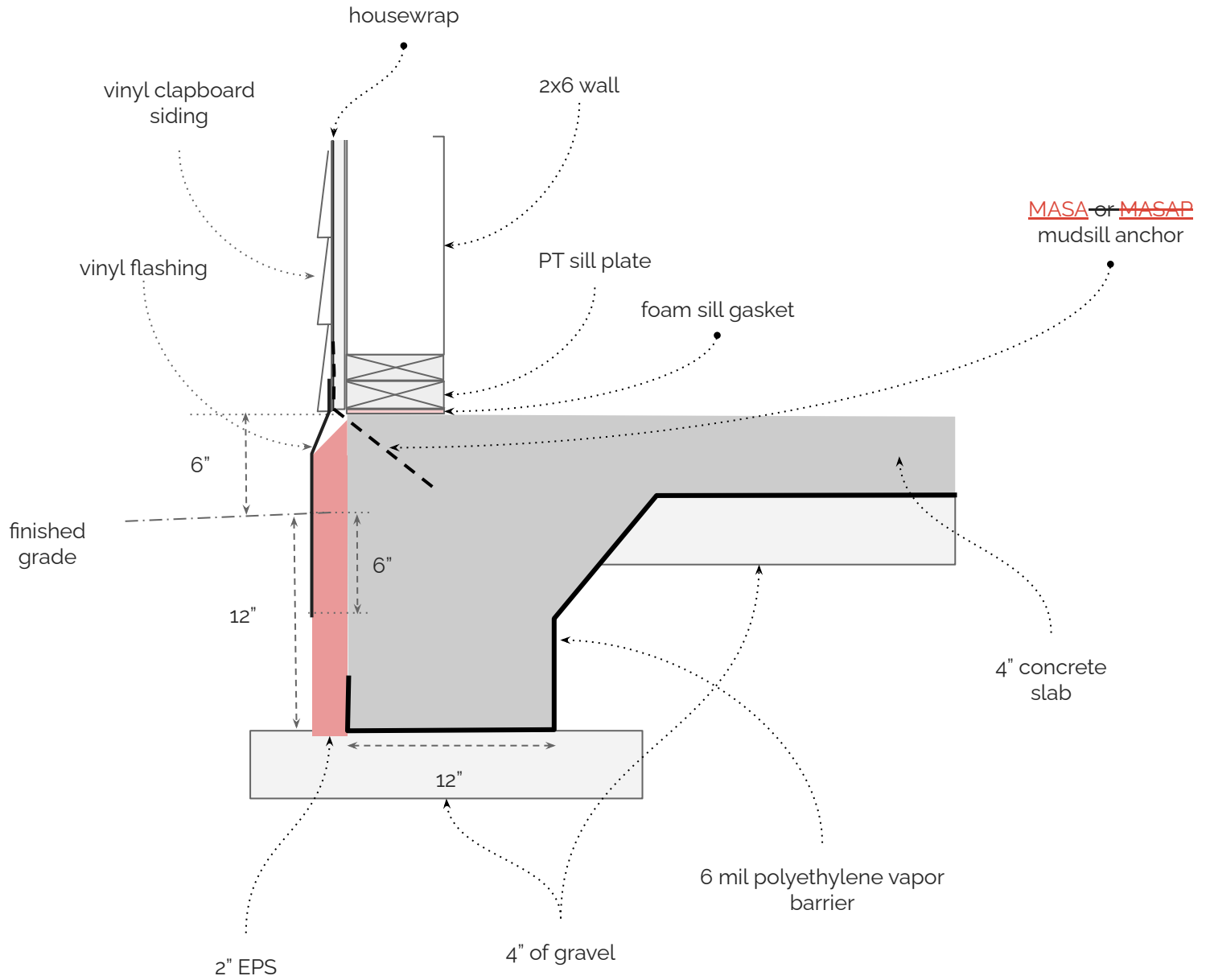


QUESTIONS FOR ENGINEERS

- 1) The stairwell header is supported by a 2x4 wall. What provisions do we need in the foundation to support this wall?
- 2) How should this wall be anchored to the foundation?

ROSEBUD 3 : TECHNICAL : FROST PROTECTED SHALLOW FOUNDATION : SEED

DETAIL

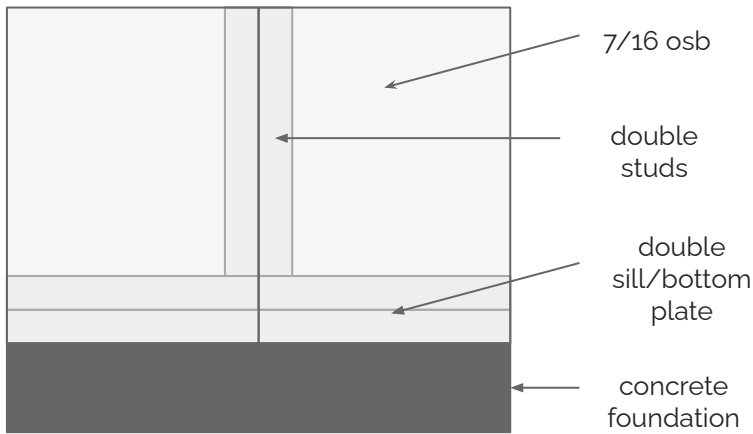


ANCHORS (1 OF 2)

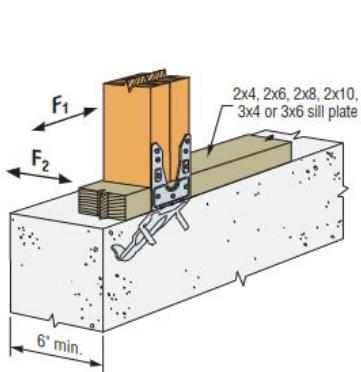
QUESTIONS FOR ENGINEERS (1 of 2)

Simpson describes several code compliant installation options for their MASA anchors. Our case is actually a combination of 3 of their options: a) we have a double 2x sill; b) we have double studs (every 4 ft); and c) we have 7/16" osb attached to the wall panels.

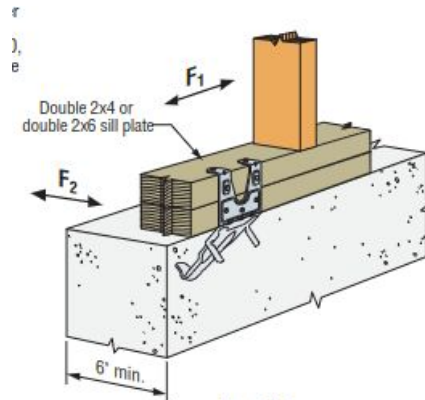
OUR CASE



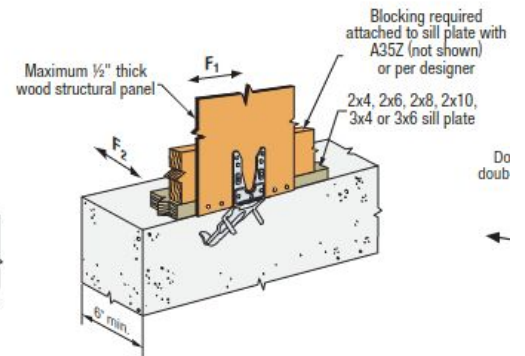
MANUFACTURER RECOMMENDATIONS (click images for link to source)



Detail 7A
Two-Legs-Up



Detail 8
Double 2x



Detail 7C
Two-Legs-Up Alternate

ANCHORS (2 OF 2)

QUESTION FOR ENGINEER (2 of 2)

Simpson makes two versions of this anchor:

- 1) MASA seems to be designed to wrap around the sill plate - or be installed with a single leg up (attached to stud)
- 2) MASAP appears to be indicated for SIP construction (attached with 2 legs up)

So MASAP seems to be the one we would want for our panelized system, but has 1 major setback: it doesn't lay flat on the forms (as MASA does). The question is then if we can use the MASA anchors with 2 legs up (instead of the MASAP) and increase the schedule?

MASAP Mudsill Anchor for Panel Form



Mudsill Anchors

i This product's information may differ depending on the category of use. You are currently viewing details related to Mudsill Anchors. You can also view product information related to the category: [Concrete Connectors for Cold-Formed Steel Construction](#)

The MASAP is a mudsill anchor for panel form that provides a time-saving alternative to anchor bolts. This mudsill anchor eliminates the need for 3" square plate washers for seismic design and, in some cases, has allowable loads that meet or exceed the parallel- and perpendicular-to-plate shear loads of other cast-in-place anchors. The MASAP is ideal for installation on panelized forms and is code listed by ICC-ES under the 2012, 2015, 2018 and 2021 IBC® and IRC®.

Key Features

- Attaches easily to the inside of a panel form for quick installation
- None of the labor costs involved in drilling plates and aligning holes
- Flat design eliminates chances of modification in prefabricated walls
- Eliminates the need to notch studs because of intersection with anchor bolt placement
- Reduces the chance of having to retrofit anchors because of missing or misplaced anchor bolts

Material

MASA Mudsill Anchor



Mudsill Anchors

i This product's information may differ depending on the category of use. You are currently viewing details related to Mudsill Anchors. You can also view product information related to the category: [Concrete Connectors for Cold-Formed Steel Construction](#)

The MASA is a mudsill anchor that provides a time-saving alternative to anchor bolts. This mudsill anchor eliminates the need for 3" square plate washers for seismic design and, in some cases, has allowable loads that meet or exceed the parallel- and perpendicular-to-plate shear loads of other cast-in-place anchors. The MASA is ideal for installation on standard forms and is code listed by ICC-ES under the 2012, 2015, 2018 and 2021 IBC® and IRC®.

Key Features

- Attaches easily to the concrete form for quick installation
- Lays flat on the form board so there is no anchor bolt to finish around
- None of the labor costs involved in drilling plates and aligning holes
- Flat design eliminates chances of modification in prefabricated walls
- Eliminates the need to notch studs because of intersection with anchor bolt placement
- Reduces the chance of having to retrofit anchors because of missing or misplaced anchor bolts



MASA Installed

ROSEBUD 3 : TECHNICAL : FROST PROTECTED SHALLOW FOUNDATION : SEED

SILL PLATE

