



Greek Village Townhomes

516 Dan Allen Drive, Raleigh NC

Greek Village Townhomes

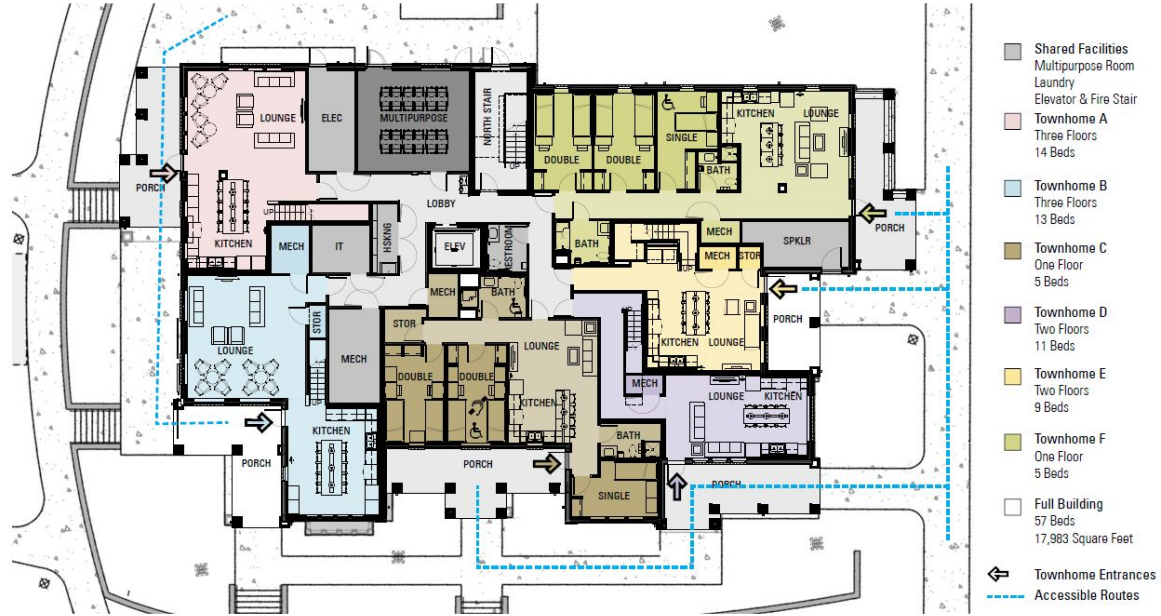
- Designed to provide group housing for organizations historically underrepresented
- Private Entrance off of large porch marked with organization name and letters
- Fully Furnished Living Areas with group seating for exclusive Chapter Use
- Electronic Entry that can be shared across membership
- Kitchens with custom cabinets, sleek black appliances and fixtures, quartz countertops and island/peninsula seating



- Mix of single and double rooms with max occupancy varying from 5-14
- Onsite unlimited laundry
- Meets first year student on-campus housing requirement
- Multipurpose room and large back patio to support chapter meetings and programs
- Access to Village amenities

Greek Village Townhomes - Unit Layouts

- Each unit has front porch and designated entry with chapter name and letters
- First floor has a fully furnished chapter lounge and full kitchen with seating. Five-bedroom units are one story while larger units have bedrooms upstairs.
- Building common area includes multipurpose room, elevator, guest bathroom, and housekeeping/mechanical spaces
- No live-in staff



Greek Village Phase 4



Greek Village Townhomes
Floor 1

October 21, 2022



Greek Village Townhomes - Unit Layouts

- Second floor:
 - Living spaces for units A, B, D and E
 - Shared laundry room with 3 washers and dryers and unlimited access for residents
- Electronic control access per unit is restricted to residents of each



- Shared Facilities
 - Multipurpose Room
 - Laundry
 - Elevator & Fire Stair
- Townhome A
 - Three Floors
 - 14 Beds
- Townhome B
 - Three Floors
 - 13 Beds
- Townhome C
 - One Floor
 - 5 Beds
- Townhome D
 - Two Floors
 - 11 Beds
- Townhome E
 - Two Floors
 - 9 Beds
- Townhome F
 - One Floor
 - 5 Beds
- Full Building
 - 57 Beds
 - 17,983 Square Feet

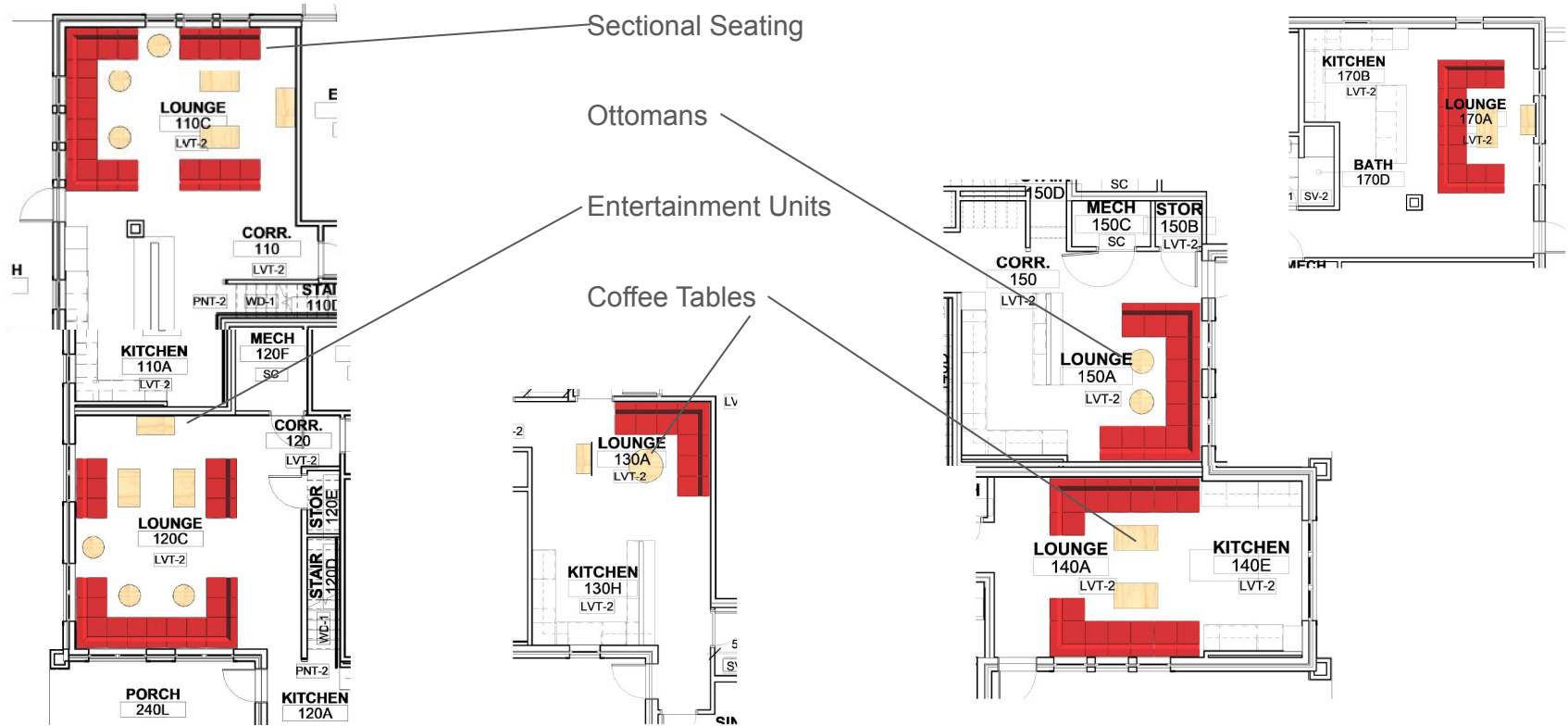
Greek Village Townhomes - Unit Layouts

- Second floor:
 - Living spaces for units A, and B
 - Shared laundry room with 3 washers and dryers and unlimited access for residents
- Electronic control access per unit is restricted to residents of each



- Shared Facilities
Multipurpose Room
Laundry
Elevator & Fire Stair
- Townhome A
Three Floors
14 Beds
- Townhome B
Three Floors
13 Beds
- Townhome C
One Floor
5 Beds
- Townhome D
Two Floors
11 Beds
- Townhome E
Two Floors
9 Beds
- Townhome F
One Floor
5 Beds
- Full Building
57 Beds
17,983 Square Feet

Unit Living Spaces - furniture layouts



Living Room Selections - Units A, B D and E

- Sectional seating for 11-19 (unit specific) in Textile - Crow
- Ottomans double as extra seating or table space
- 42 inch entertainment unit with shelf and/or wall mounted TV
- 42 inch coffee table



Townhouse D Living Room/Kitchen



Living Room Selections - Units C and F

- Sectional with seating for 7 in Recycled Leather - Magnetite
- 42 inch entertainment unit with shelf
- 42 inch rectangular or 36 inch round coffee table



Kitchens

- Custom cabinets
- Black fixtures and appliances
 - Fridge with icemaker
 - Dishwasher
 - Electric range
- Quartz countertops
- Hardwood inspired floors
- Large white subway tile backsplash
- Island or peninsula dining with high top stools
- Larger units have two refrigerators
- Seating varies based on occupancy



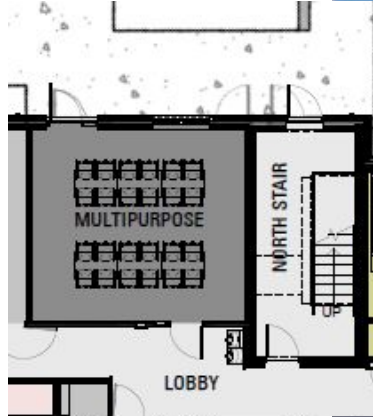
Bedroom Selections

- Full size wooden bed in single rooms and Twin XL in double rooms
- Study Table with Black Flex chair on casters w/o arms
- 2 under bed chests
- Ceiling Fan



Common Spaces

- Multipurpose Room
 - Flexible seating with 40 chairs and 8 tables
 - Space has integrated AV (sound, TVs, blackout window treatments, and can support chapter programs and meetings)
 - Opens up to back patio
- Outdoor patio with seating and charcoal grill
- Access to reservable playfields in the Village to host events
- Access to co-working space in neighboring apartments
- Bicycle Shelters
- Close proximity to wolfline bus stop.



Application Process

- FSL will send out applications due November 21
- Students interested in living in the unit will sign Room Agreements for the academic year
- Priority assignment
 - a. will be given to organizations whose founding purpose is specific to an underrepresented population on campus
 - b. then, to any organization without housing in Greek Village
 - c. then, to any affiliated roommate group
- Anticipated move in date is August 10, 2024 in line with Greek Village opening for Fall 2024. Greek Village Townhomes will follow the same closure schedule as posted for Greek Village.
- Signage to mark the entrance for groups will be ordered and installed by the university prior to occupancy and match the signage standards of Greek Village



Terms of Room Agreements

Terms: Fall 2024-Spring 2025 (Aug to May)

Rates:

- Single bedrooms are billed \$4,160 per term via the Cashier's Office
 - \$8,320/academic year
 - \$924/mo
- Double bedrooms are billed \$3,950 per term via the Cashier's Office
 - \$7,900/academic year
 - \$878/mo

Laundry: \$50/semester

Resnet and Streaming service also billed through university

Utilities are included in rate

University Cashier's Office is able to offer several payment options, including payment plans, 529 plans, scholarships and financial aid toward cost of rates.

