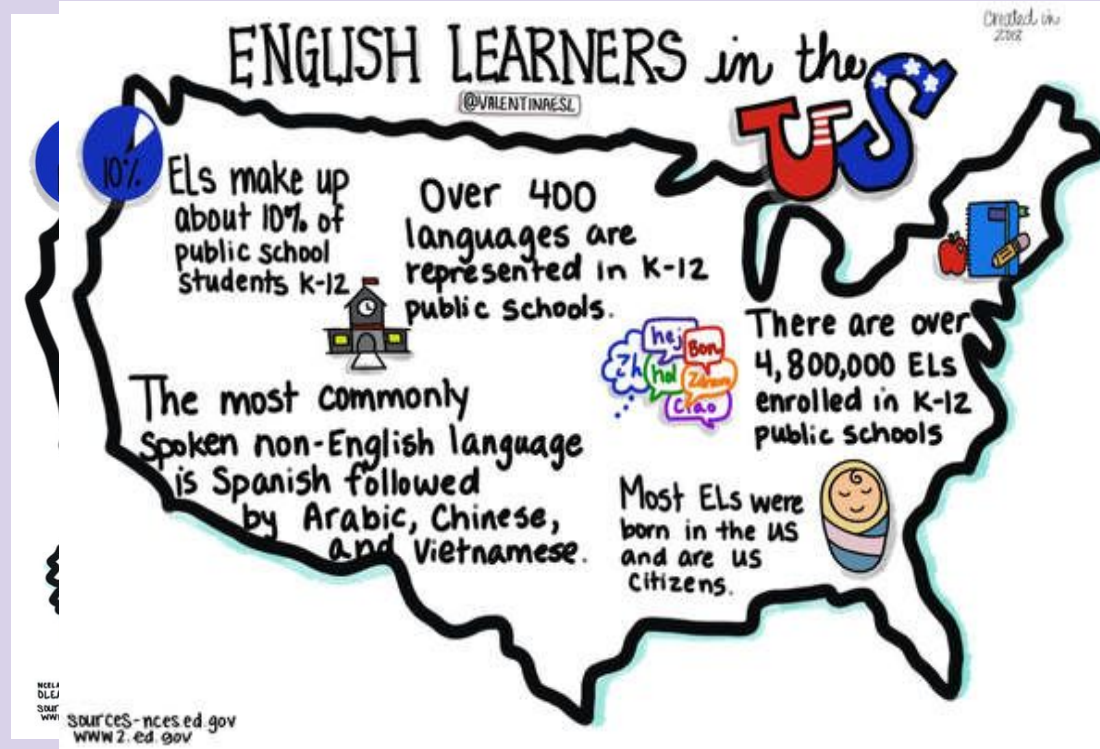


ESL at Cresthaven Academy Charter School

By Sandra Jacome
Director of Student Services

2021 Statistics on ELs in the US

- About 10.6 percent of public school students were ELLs (about 5,000,000) -
- The percentage of public school students who were ELs ranged from 0.8 percent in West Virginia to 20.3 percent in Texas.
- 3.8 million speak Spanish (followed by Arabic, Chinese, Vietnamese, Portuguese)
- 800,600 ELs were identified as students with disabilities
- most born in US and are US citizens
- only 70% will graduate HS (compared to overall 85%) - according to NPR biggest problem is the **QUALITY instruction** tailored to ELL needs



<https://nces.ed.gov/programs/coe/indicator/cgf/english-learners>

How ELLs are identified in NJ

-- **Step 1:** Home Language Survey

-- **Step 2:** Records Review - *interview with student/family & review of school records ***IMP!!*

-- **Step 3:** In NJ and other states, use some type of test to further Pinpoint needs of ELs (Access/Model & Screener)



BICS are cognitively undemanding activities

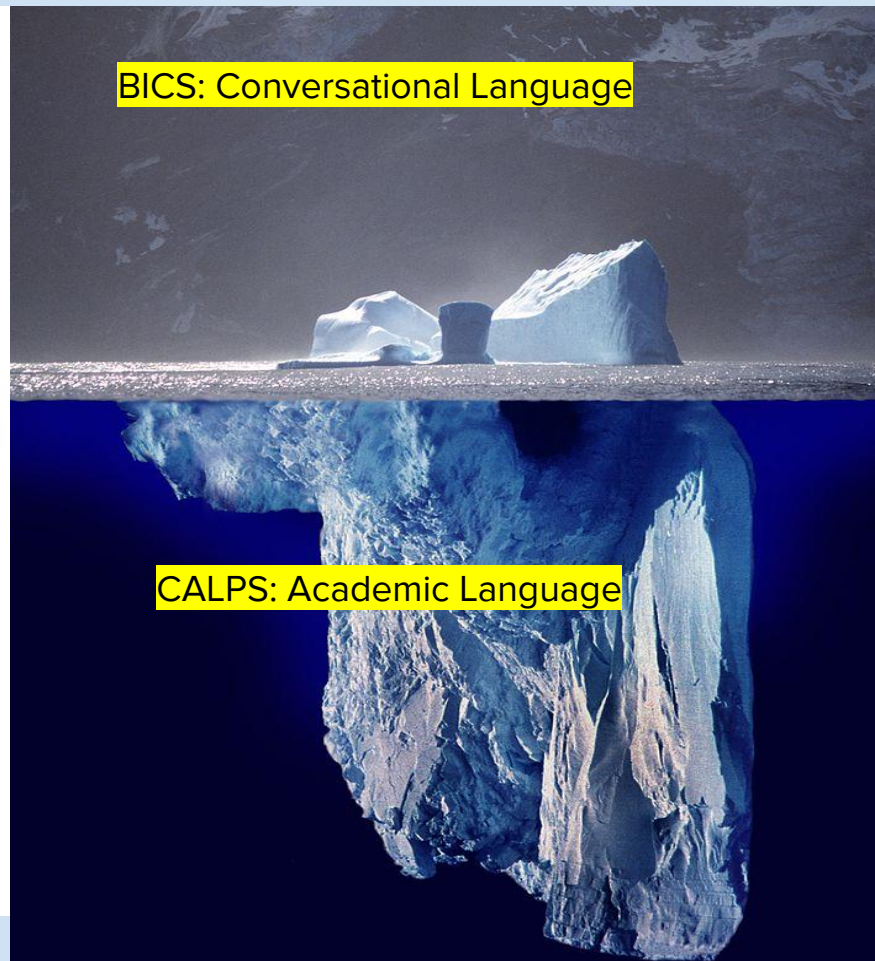
	A	C	
Phonics, decoding			
	Following directions Face-to-face conversation Buying lunch at school Music, Art, PE classes	Note on the refrigerator Written directions (no visuals) Telephone conversation Oral presentation	
Context Embedded	<hr/>		Context Reduced
	Demonstrations/Experiments Audio-visual assisted lessons Basic math computations Projects and activities Making models/charts/graphs	Standardized Tests Reading/Writing in content areas Math concepts and applications Lecture with few illustrations Textbooks	

Opinions,
analysis

... and CALP are cognitively demanding

BICS: Conversational Language

CALPS: Academic Language



NJ Bilingual Law

- ❑ Identify and Assess All Potential EL Students - HLS
- ❑ Provide Language Assistance to EL Students – ESL in Hamilton
- ❑ Staff and Support an EL Program – ESL certified teachers/SEI trained teachers
- ❑ Provide Meaningful Access to All Curricular and Extracurricular Programs (work towards graduation) – all ESL students are included

Bilingual Education Act 1974

- Reauthorization of the 1968 act
- Expanded requirements to all English language learners - regardless of socioeconomics
- Required all schools to comply, whether they received federal funding or not
- Provided funds for districts to establish curriculum, provide training to staff, and conduct research on bilingual programs



NJ Bilingual Law Cont'd

- ❑ Avoid Unnecessary Segregation of EL Students
- ❑ Evaluate EL Students for Special Education and Providing Dual Services - must provide BOTH if eligible (test in dominant language)
- ❑ Ensure Meaningful Communication with Limited English Proficient Parents – interpreters, letters translated, etc.
- ❑ Law for parental consent effective on July 1, 1996, states that parents of English language learners have the **right to decline bilingual** education program services (includes ESL)
- ❑ Monitor and Exit EL Students from EL Programs and Services (make sure they are progressing within a reasonable time)



ESL at Cresthaven Academy Charter School



K-4 Pull out or Push In for 1 period daily

Upper Campus 5-8 – ESL for 2 periods daily



What ESL *is* and what ESL *isn't*

ESL IS:

-essential/mandated language development for L2 learners

-separate instruction time

- communication based program that includes multicultural aspects

ESL ISN'T:

-Special ed nor remedial ed

- Grammar based

- Supplemental

- Simply Language Arts

What parents can do to become more involved

1. Attend back-to-school nights/events
2. Communicate with teachers (text, phone, email, note, log)
3. Value education at home.. ...
4. Encourage reading....
5. Help manage the homework *process*...
6. Attend parent organization meetings... join and ATTEND ESL Parent Advisory Committee



Purpose for creating the ESL Parent Advisory Committee

- To inform parents of ESL students about Programs for ELLs at Cresthaven Academy
- To offer an opportunity for parents of ESL students to communicate their concerns
- To receive answers to their questions



Next Meeting TBD – email will be sent out asking who would like to be part of the Bilingual Advisory Committee

Useful Links

- [Useful Links/Resource Page from NJTESOL/NJBE Parent Expo](#)
- [Youtube recordings in numerous languages from NJTESOL/NJBE on parental rights](#)
- [English EL DCL Fact Sheet -- Office of Civil Rights](#)