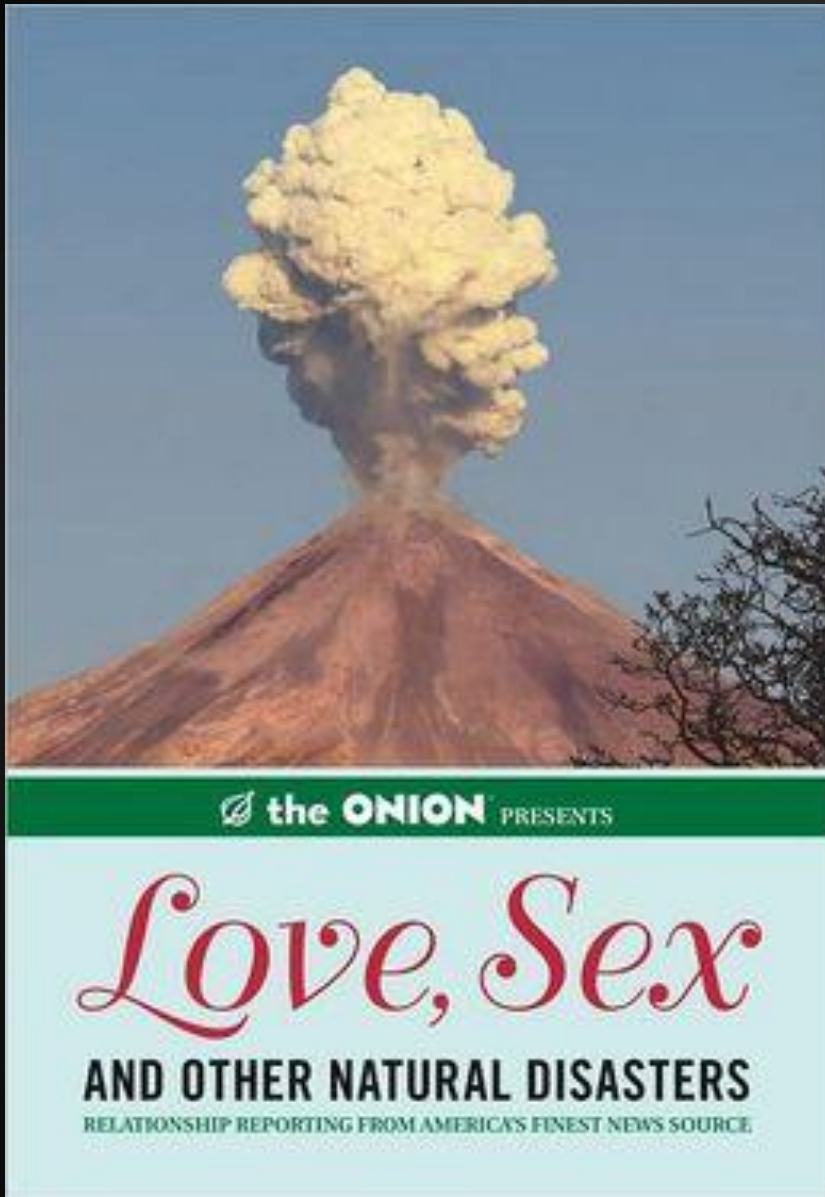


Examples of top-notch CAR following disasters



Ben Poston
Los Angeles Times
@bposton

Disaster X just happened ...

You want to go
beyond the episodic
coverage.

What do you do?

Panic?

Flail?

Call in sick?





It's OK.

**Here are some
examples of
good CAR to
ease your
worried mind**

Bridges

You can get data from your state or National Bridge Inventory. You can see if the bridge was rated structurally deficient or obsolete. State should also have inspection records.

Example: After I-35W bridge collapsed in Minneapolis in 2007 ...



I-35W bridge collapsed in Minneapolis in 2007

Dams



Again, check the state and federal records - National Dam Inventory. You can also see the last time they were inspected.

Examples: Taum Sauk dam in Missouri

Flooding

WYNC Sandy
interactive
mapping
examples on
[evacuation](#)
[zones](#) and [flood](#)
[zones](#)



Tornadoes

NOAA's [Storm Prediction Center](#) has historical data on every tornado, hail or high wind event since the 1950s.

- [Map tornado activity](#)
- [Map tornado sirens](#)



Earthquakes



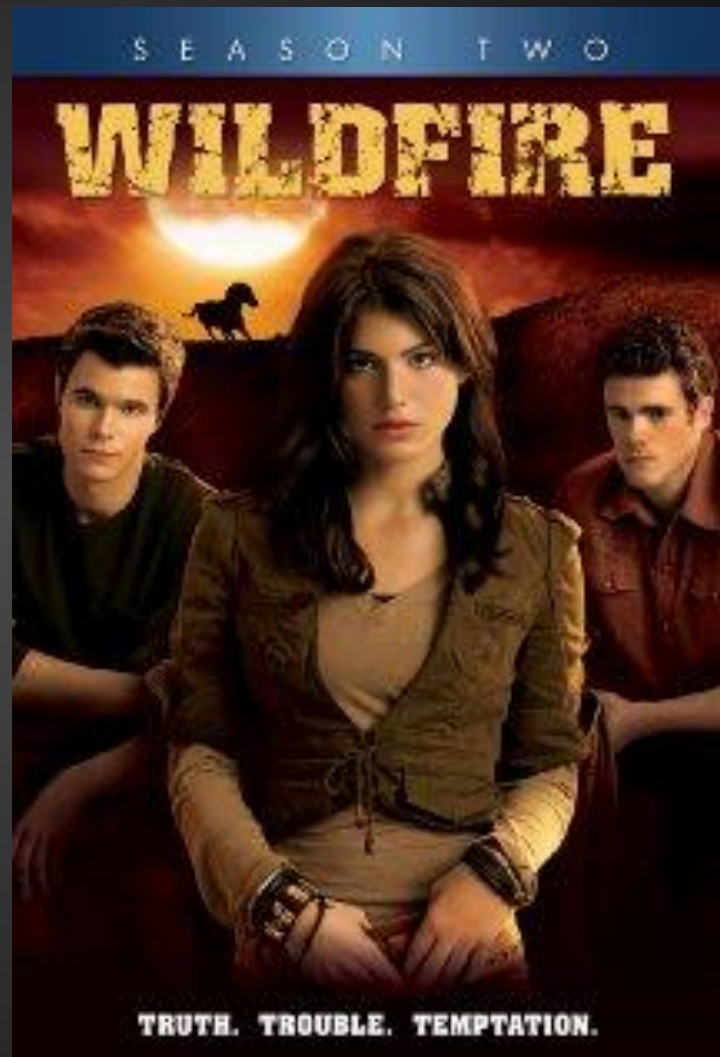
L.A. Times data desk uses an email blast from the U.S. Geological Survey to produce [automated blog posts](#)

That data gets dumped into a database so we can provide context when the next big one hits.

Wildfires

National Public
Radio - [nationwide
map](#)

Mapping a wildfire
on the fly with
Google Maps:
[LA Times example](#)



Hurricanes



Power failures
after Hurricane
Sandy - NY
Times

Path of the
storm

- Sun-Sentinel
example

Droughts

Tracking
[droughts over
the years](#) - NY
Times

"Drought
extends, crops
wither"
[interactive](#)

