

Center for Certification & State Initiatives

In this Section

Alternative Certification

Strong Foundations / OER HQIM

Collaborative PLCs

Teacher Incentive Allotment

National Board Certification

Strategic Compensation

Field Services

Action Items

- ☐ Accepting applications for teacher, principal and superintendent alternative certification programs.

Center for Certification and State Initiatives

Name and Email	Phone	Position/Specialty
<u>Brunett, Stephanie</u>	325-675-7038	Consultant: Strategic Initiatives - Strong Foundations, OER, RBIS
<u>Crane, Carmen</u>	325-675-8650	Consultant: Strategic Initiatives - Teacher Incentive Allotment
<u>Escobar, Candice</u>	325-675-8605	Director's Secretary: CCSI
<u>Ford, Monica</u>	325-675-8699	Consultant: Strategic Initiatives - Strong Foundations, OER
<u>Hammer, Stephanie</u>		Consultant: Strategic Initiatives - Teacher Incentive Allotment
<u>Hammond, Linda</u>	325-675-8675	Collaborative PLC Coach
<u>Harris, Lana</u>	325-675-7014	Consultant: Strategic Initiatives - Strong Foundations, OER, RBIS
<u>Holden, Leigh Anne</u>	325-675-8625	Consultant: Teacher Certification
<u>Muscatell, Brenna</u>	325-675-8655	Consultant: Lead - Strong Foundations, OER, RBIS
<u>Patterson, Whitney</u>	325-675-7020	Component Secretary: CCSI

Center for Certification and State Initiatives

Name and Email	Phone	Position/Specialty
<u>Polk, Cody</u>	325-455-8365	Consultant: Human Resources, QMS Specialist, Internal Planning and Performance Management
<u>Post, Anne</u>	325-675-7042	Consultant Lead - Collaborative PLC Coach
<u>Priddy, Greg</u>	325-675-8684	Coordinator: Administrator Certification, Certification Officer, T-TESS, T-PESS AEL Training
<u>Rains, Myra</u>	325-675-8612	Collaborative PLC Coach
<u>Richey, Alan</u>	325-675-8622	Consultant: School Board. Bus Driver Training, and Lone Star Governance
<u>Schlueter, Shawn</u>	325-675-8645	Consultant: Internal Talent and Data Management
<u>Scherr, Donna</u>	325-675-8680	Consultant: Strategic Initiatives - Strong Foundations, OER
<u>Scott, Stephanie</u>	325-675-7036	Consultant: Alternative Certification Program Teacher Facilitator
<u>Tindall, Jaime</u>	325-675-8644	Consultant: Strategic Compensation, Teacher Incentive Allotment, National Board Certification, Academic Audit
<u>Wyatt, Tina</u>	325-675-7026	Director, CCSI



Areas of Certification

<u>Area of Study for Teachers</u>	<u>Areas of Study for Administrators</u>
EC-3 with STR	Master's with Principal Certification
EC-6 Core with STR	Principal Certification
4-8 Core with STR	Superintendent Certification
7-12 Math	
7-12 Science	<u>For para professionals</u>
EC-12 Special Education	Associates Degree in Child Development



Alternative Certification Program



Admission Requirements for Teachers

- Bachelor's degree from an accredited university
- Proficiency in reading, speaking, and writing in English
- Minimum GPA of 2.5
- Online application
- Three professional references
- Pre-admission interview



**ENROLL TODAY
FOR A JULY 1 START!**

https://www.esc14.net/page/acp_home

PROGRAM OVERVIEW

Region 14 Alternative Certification Program offers a rigorous, high-quality, evidence-based curriculum. The program is 17 months in two stages:

STAGE 1: Pre-service

- 7 months (January to July)
- Face-to-face class every Tuesday night
- Face-to-face class one Saturday a month
- Online content modules

STAGE 2: Internship

- 10 months (August to May)
- Candidate secures a full-time teaching position and receives pay through the school district
- Face-to-face class one Saturday a month (August-November)

Contact Us :

Candice Escobar
cescobar@esc14.net

www.esc14.net



325-675-8600



1850 Hwy 351
Abilene, Texas 79601

Now Accepting Applications for the 2025-2026 School Year



Want to step into administration?

- Principal Certification
- Superintendent Certification
 - **Apply by May of 2025**

One year programs to fast track you into a new profession. Visit us online to get started!

<https://bit.ly/3KpOvgA>



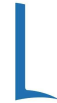


**Contact the ESC for
information on
professional learning,
implementation planning,
print costs, EMAT system
funding, and more!**

**SBOE-Approved High Quality
Instructional Materials for**

- **K-5 RLA**
- **K-5 Math**
- **6-Alg I Math**

**based on research-based best
practices and providing a full suite
of resources.**



**Brenna Muscatell
325-675-8655
bmuscatell@esc14.net**



For non-grant funded districts interested in Bluebonnet Learning, we are offering support options to help with successful implementation. This support can be contracted with additional curriculum days.

Brenna Muscatell
325-675-8655
bmuscatell@esc14.net

10 Additional Curriculum Days

Leadership Launch- Strategic Action Planning
Quarterly Leadership Check-in and Mid-year Stepback

Summer PD for Leadership, Coaches, and Teachers- RBIS, Product Overview, Internalization(1-2 days)

Quarterly Observation and Feedback/Coaching for Teachers
6 Visits for Teacher Support- Internalizing, Modeling, etc.

5 Additional Curriculum Days

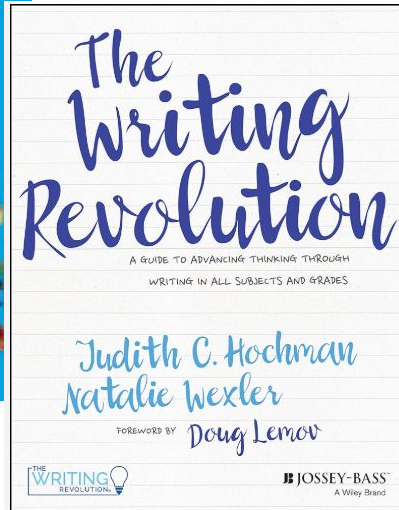
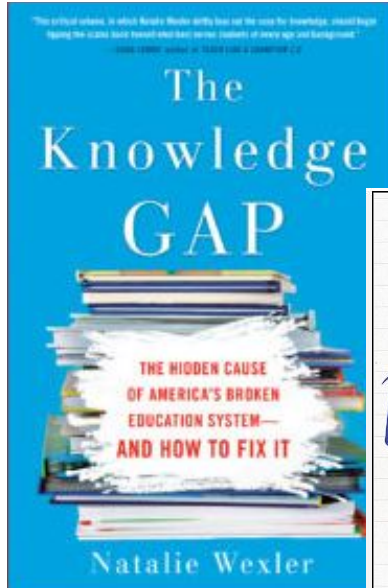
Leadership Launch- Strategic Action Planning
Quarterly Leadership Check-in and Mid-year Stepback

Summer PD for Leadership, Coaches, and Teachers- RBIS, Product Overview, Internalization(1-2 days)

1 Visit per Semester for Observation and Feedback/Coaching for Teachers
3 Visits for Teacher Support- Internalizing, Modeling, etc.

The Knowledge Gap and The Writing Revolution!

June 5th



Join us for a remote presentation by Natalie Wexler, author of *The Knowledge Gap* and co-author of *The Writing Revolution*.

Learn about the knowledge gap in RLA and what can be done to support students.

Donna Scherr will guide you through strategies found in *The Writing Revolution* and the importance of writing to support deep comprehension.

Participants will receive a copy of the author's book.

Link to register -
<https://pitstop.esc14.net/WorkshopLink.aspx?WorkshopID=15678>

Coaching Collaborative PLCs
Provides **Free** Bluebonnet Support for
Qualifying Schools:

Internalization for
Math & Reading



Training

Support & Sustainability





Bluebonnet Learning Collaborative PLCs- an in kind service for 2025-2026

Click below for more information.

[Bluebonnet Collaborative PLC Support Info](#)



Contact Anne Post
apost@esc14.net
325-675-7042





TIA Regional Support Grant 2025-26 SY

Goal: To impact **strategic compensation** in Region 14 districts.

Purpose: To **develop capacity** to support rural and small local education agencies with the Teacher Incentive Allotment (TIA).

District Supports:

- System Planning & Development
- Stakeholder Engagement
- System Application
- System Expansions & Modifications
- Data Collection
- Data Submission
- T-TESS Calibration
- Spending Plan

If your district isn't currently participating in TIA, our team will be contacting this spring to discuss the benefits!

Teacher Incentive Allotment Region 14 Cohort Timelines

	<u>Cohort C</u> (2 districts)	<u>Cohort D</u> (6 districts)	<u>Cohort E</u> (9 district)	<u>Cohort F</u> (3 districts)	<u>Cohort G</u> (4 districts)	<u>Cohort H</u> (10 districts)
Data Capture Year	2020-2021	2021-2022	2022-2023	2023-2024	2024-2025	2025-2026
System Application Posted	30-Mar-20	1-Nov-20	1-Nov-21	1-Nov-22	1-Nov-23	Nov 2024
System Application Due to TEA	15-May-20	15-Apr-21	15-Apr-22	15-Apr-23	15-Apr-24	15-Apr-25
System Application Result Final Notification	15-Aug-20	15-Aug-21	15-Aug-22	15-Aug-23	15-Aug-24	15-Aug-25
Data Review due to Texas Tech University	1-Nov-21	20-Oct-22	19-Oct-23	17-Oct-24	16-Oct-25	15-Oct-26
Final Approval Notification	Feb 2022	Feb 2023	Feb 2024	Feb 2025	Feb 2026	Feb 2027
Final Designation and Allotment Notification	Apr 2022	Apr 2023	Apr 2024	Apr 2025	Apr 2026	Apr 2027
Approved Districts Receive Initial Payout through the FSP including Reimbursements	Sep 2022	Sep 2023	Sep 2024	Sep 2025	Sep 2026	Sep 2027
Annual Program Submission for Approved Districts	31-Aug Begins 2022	31-Aug Begins 2023	31-Aug Begins 2024	31-Aug Begins 2025	31-Aug Begins 2026	31-Aug Begins 2027



TIA Resources

[2024-25 TIA Guidebook](#)

[Frequently Asked Questions](#)

[Funding Map](#)

Determining Designations

[Designation Determination Tool 2024 - T-TESS](#)

[Designation Determination Webinar 2024](#)

Preparing for Data Submission and Validation

[TIA Excel Analysis Tool 2023 T-TESS](#)

[How to Use the TIA Excel Analysis Tool](#)

[2024-25 Data Validation Documentation](#)

Save the Date!



THE 2025 TIA
CONFERENCE

June 9-11
San Antonio Marriott Rivercenter

Region 14 National Board Candidates Cohort



Components 1. 2. 3. & 4



How Can I support
you?



You Can Do It?

Strategic Compensation

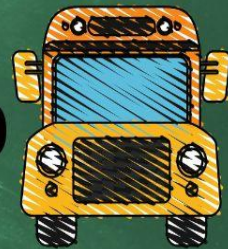


Districts to participate in this grant to recruit, reward, and retain the best teachers to serve your neediest students.

If you are interested please email:
Jaime Tindall @ jtindall@esc14.net or call 325-675-8644.



Bus Driving Trainings coming up



8- Hour Refresher Course

- April 12th
- June 3rd
- June 5th
- June 10th
- June 11th



8-Hour Online Recertification available

- Go to our website
esc14.net
- Scroll to the bottom of
the page
and click on the yellow
school bus
- Click on the “Online
Bus Driving Course” to
register



20-Hour Certification Course

- May 28th-30th @
Hermleigh ISD
- June 23rd- 28th

Questions?

Alan Richey:
325-675-8622
arichey@esc14.net

Whitney Patterson:
325-675-7020
wpatterson@esc14.net

SCHOOL BOARD



ESC 14 BOARD CONFERENCE

SATURDAY, JUNE 7TH

8:00 AM - 4:00 PM

COST: \$45

BREAKFAST & LUNCH PROVIDED

SESSION #115806

✓ REGISTER IN PITSTOP

***NEW TRAINING
VIDEOS AVAILABLE***

**QUESTIONS?
CONTACT ALAN RICHEY
325-675-8622
ARICHEY@ESC14.NET**

