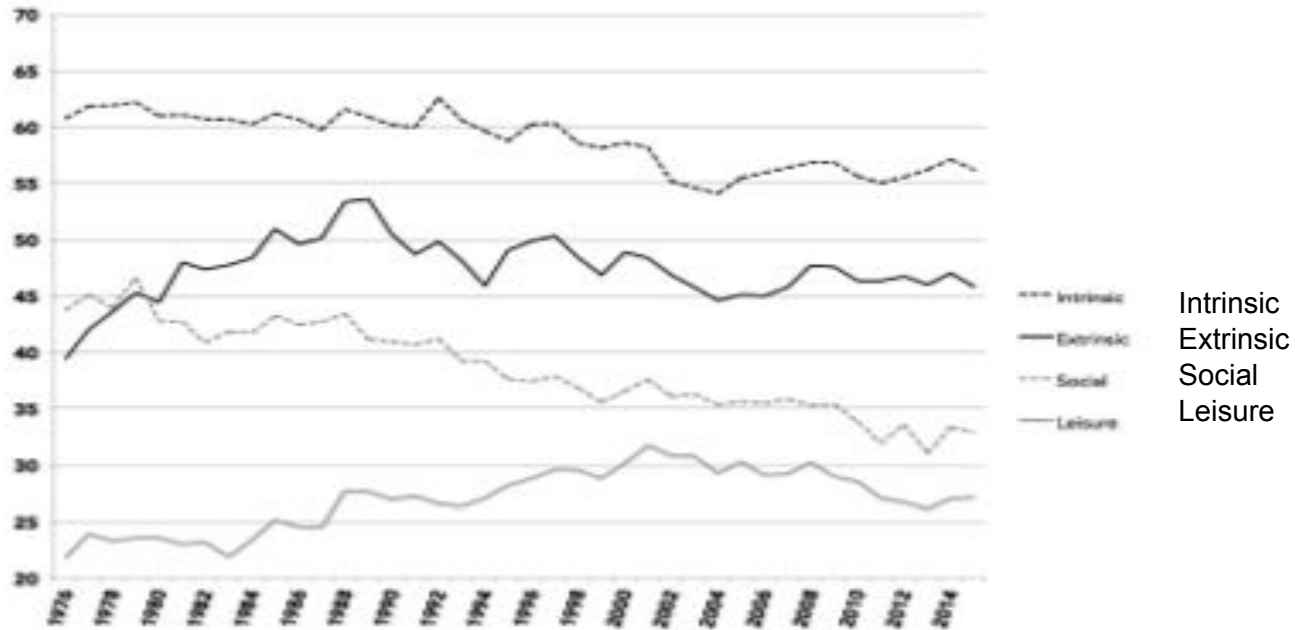


What job attribute is most important to 12th graders?

# Intrinsic factors (55% of respondents)



[Click here for more info on this topic](#)

1. What is most important to you in choosing a job?
2. Which attribute has experienced the biggest change since 1976? Why do you think this change has occurred?
3. A friend tells you that it seems like everyone only cares about pay when it comes to jobs. Agree or disagree with her statement based on data from the chart.
4. You are interviewing for a job and tell the interviewer that you are one of the 25% of high school seniors who really cares about leisure time when it comes to a job. Good idea or bad idea to tell them this?