

Refining and Styling your Map



Surui Cultural Map

Paiter Surui



Nesta foto o mando está fazendo a pintura Tikür na mulher dele. Tikür é uma pintura específica para as mulheres. (Foto de Andrea Ribeiro)

*Jenipapo (Genipapo)
"Wexó"*

Jenipapo fruit is produced by the jenipapo tree, which reaches twenty feet high. From the meaty part of the green fruit, an ink is extracted with which human skin can be painted. This makes the fruit very important for the Surui, because the art of painting is always included in everything that they do, especially in celebrations and rituals. The art of painting is one of the things most valued by Paiter. Each occasion call for a different type of painting.

www.paiter.org

© 2012 Ches Spot Image
Image © 2012 DigitalGlobe

Imagery Date: 7/9/2008
11°07'57.56" S, 61°11'19.69" W elev. 726 ft
Eye alt 22.75 mi

Google earth

Ngarluma Ngurra Cultural Map

 Ngarluma Ngurra: Protecting Aboriginal Culture  NC

YARRINGARNDALY 



Yarringarndaly is also known as Cockroach bush, emus eat the seeds of this plant. The young leaves can be boiled and used to alleviate flu symptoms.

<< To read more about Ngarluma Ngurra: Protecting Aboriginal Culture visit FORM www.form.net.au >>

A, GEBGO

Google earth

Tour Guide 20°22'35.22" S 118°06'17.47" E elev 5 ft eye alt 118.76 mi



Making Customized Info Windows



Using Code to Edit the Info Window

Styles:

<i>Italics</i>

Bold

<u>Underlined</u>

<s>Strike Out</s>

subscript_{subscript}

superscript^{superscript}

<big>Big</big>

<small>Small</small>

<tt>Typewriter</tt>

Emphasized

Strong

<code>Code</code>

Using Code to Edit the Info Window

Styles:

<i>Italics</i>

Bold

<u>Underlined</u>

</br> line break

<s>Strike Out</s>

subscript_{subscript}

superscript^{superscript}

<big>Big</big>

<small>Small</small>

<tt>Typewriter</tt>

Emphasized

Strong

<code>Code</code>

Fonts:

red by
name

leaf green
by hexadecimal RGB

size 1

size 2

size 3

size 4

size 5

size 6

size 7

Times ,

Verdana

Arial

Info Windows



Paiter Surui



Nesta foto o mando está fazendo a pintura Tikür na mulher dele. Tikür é uma pintura específica para as mulheres. (Foto de Andrea Ribeiro)

*Jenipapo (Genipapo)
"Wexó"*

Jenipapo fruit is produced by the jenipapo tree, which reaches twenty feet high. From the meaty part of the green fruit, an ink is extracted with which human skin can be painted. This makes the fruit very important for the Surui, because the art of painting is always included in everything that they do, especially in celebrations and rituals. The art of painting is one of the things most valued by Paiter. Each occasion call for a different type of painting.

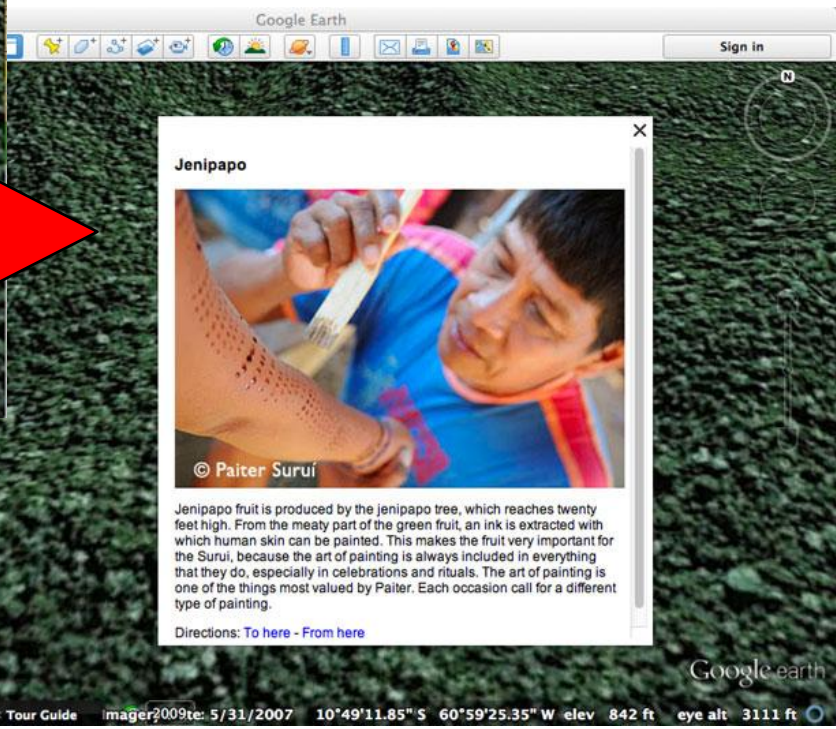
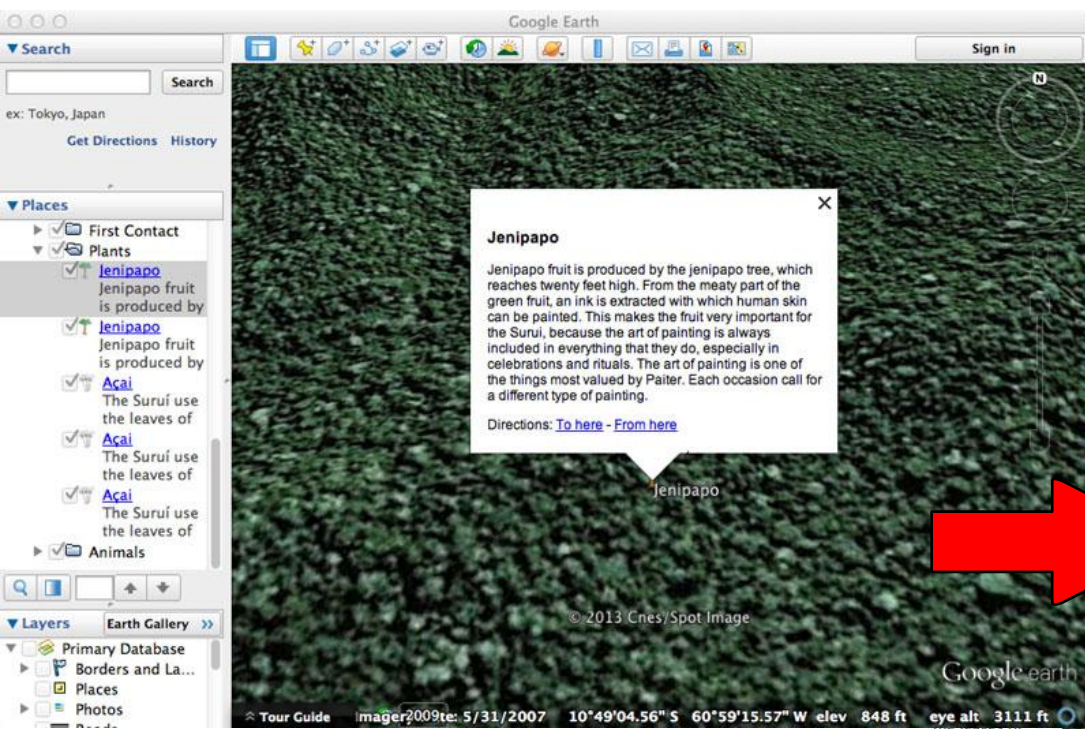
www.paiter.org

© 2012 Ches Spot Image
Image © 2012 DigitalGlobe

Imagery Date: 7/9/2008
11°07'57.56" S, 61°11'10.69" W elev. 726 ft
Eye alt 22.75 mi

Google earth

Adding Images to Info Windows



Adding Images to Info Windows

Google Earth - Edit Placemark

Name: Jenipapo

Latitude: 10°49'15.97"S

Longitude: 60°59'25.57"W

Description Style, Color View Altitude

Add link... Add image...

image URL: -no/jenipapo.jpg OK Cancel

Jenipapo fruit is produced by the jenipapo tree, which reaches twenty feet high. From the meaty part of the green fruit, an ink is extracted with which human skin can be painted. This makes the fruit very important for the Surui, because the art of painting is always included in everything that they do, especially in celebrations and rituals. The art of painting is one of the things most valued by Paiter. Each occasion call for a different type of painting.

Cancel OK



Google Earth - Edit Placemark

Name: Jenipapo

Latitude: 10°49'15.97"S

Longitude: 60°59'25.57"W

Description Style, Color View Altitude

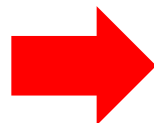
Add link... Add image...

``

`<p>`

Jenipapo fruit is produced by the jenipapo tree, which reaches twenty feet high. From the meaty part of the green fruit, an ink is extracted with which human skin can be painted. This makes the fruit very important for the Surui, because the art of painting is always included in everything that they do, especially in celebrations and rituals. The art of painting is one of the things most valued by Paiter. Each occasion call for a different type of painting.

Cancel OK



Jenipapo



© Paiter Surui

Jenipapo fruit is produced by the jenipapo tree, which reaches twenty feet high. From the meaty part of the green fruit, an ink is extracted with which human skin can be painted. This makes the fruit very important for the Surui, because the art of painting is always included in everything that they do, especially in celebrations and rituals. The art of painting is one of the things most valued by Paiter. Each occasion call for a different type of painting.

Directions: [To here](#) - [From here](#)

Adding a Photo from your Hard Drive

The advantage to having an online URL for your photos is that the text of the image link, not the entire image file itself, will be included in the Google Earth KML/KMZ file you save.

If you want to display an image file on your hard drive, paste the full path and filename into the Image URL box. When you click OK, the code `` will be inserted.

Note, the picture will have to be included along with the KML, or zipped into the KMZ file for it to be shared with others.

Finding photo path on a Mac

1. In a Finder window, find the image you want to add.
2. Right-click on image and select "Get Info"
3. In the window that pops up, look at "Where" under the General info for the file path. Copy that file path and paste it into the "Add Image" field on Google Earth. The file path might look something like this:
`/Users/brian/Projects/Workshops/Icons`
4. Note that the file path is missing on critical thing: it tells us which folders the image is in, but not the name of the image itself. You still need to add the name of the image file to this path.
5. Under the Get Info window, look under "Name & Extension" in order to get the file name / extension. In my case, that was:
`fortress.png`
6. Add the file name and ext on the end of the file path in the "Add Image" field on Google Earth. The end result should be:
`/Users/brian/Projects/Workshops/Icons/fortress.png`

Get info, under general, copy the Where information then add / and then copy the filename and add this after the slash

```
/Users/brian/Pictures/iPhoto/Img_24235.JPG">
```

drag picture into browser and get the full filename past but take out file:// so it is just /User/brian/.../JPG

when you paste in path, make sure slashes are correct

What is the URL for a File on my Hard Drive?

On PC:

1. In Windows Explorer, find the image you want to add.
2. Right-click on image and select "Properties".
3. Within Properties, you should be able to find the file path, name and extension (i.e. ".jpg"). The instructions differ depending on your version of Windows, but you should end up with a file path using slashes to show the folders the image is in, plus the image name, and the image file extension (i.e. ".jpg" at the end). This is the full path you would paste into the "Add Image" field on Google Earth.

Alternatively, here's a handy shortcut for getting file path in Windows 7:

<http://technet.microsoft.com/en-us/magazine/ff678296.aspx>

Here's some tips for Windows XP: <http://superuser.com/questions/27047/copy-full-file-path-in-windows-xp>

you can control the size of your image, for example:

```

```

If you are using Picasa the width of the image is the number after the letter s, like this:

http://lh4.ggpht.com/_dLD7HYw5Gk/Su2qqrDORPI/AAAAAAAAABHs/A4oko50iNR8/s400/IMG_2260.jpg

You can change the 400 to 800:

http://lh4.ggpht.com/_dLD7HYw5Gk/Su2qqrDORPI/AAAAAAAAABHs/A4oko50iNR8/s800/IMG_2260.jpg

You can see in the select size list that the options are 144, 288, 400 and 800.

depending on the target audience of the file you need to be aware that 800 may be too large for some smaller screens.

More on images in infowindows or (screen overlays)?

Some of you will have noticed that unless you have at .jpg or .png at the end of the URL for your photos/images, they will not embed properly into Google Earth. Thus the 'share photo' in Google Photos, ironically, does not embed into Google Earth. However, if you have an image in Google Photos, you can also view that same image through the old Picasa Web Albums interface and get the URL to the image file from there.

Simply go to <https://picasaweb.google.com/> and sign-in. Go to the album you have the image you want to display and open that image. While the URL in the address bar still does not have a .jpg in it, if you right click on the image and select Copy Image URL, you are going to get an address which looks like this:

```
https://lh3.googleusercontent.com/-sF9d0T6nNYE/Ve81nHlmvHI/AAAAAAACDN0/K3E5o7BrBKY/s912-lc42/IMG_20150908_080544566.jpg
```

This URL you CAN paste into the Google Earth image dialogue, and rely on for your online pictures.

More on images in infowindows or (screen overlays)?

However, there are some of you who may still want to simply leave the image on your hard drive. Remember that the person you are going to share the KML with doesn't have the same files and folders that you do on their computer.

So, one way to manage this is to build your final projects by saving as KMZ. This will 'zip' the image into a project file along with the text of the KML that you are building. When doing this, you can simply point to the image that is in the same folder as the KML you are working on as such:

```

```

The business of relative and absolute paths (where on the hard drive Google Earth should look for the photo you are pointing to) is further explained here:

<https://support.google.com/earth/answer/1061393?hl=en>

<http://www.google.com/earth/outreach/tutorials/kmz.html>

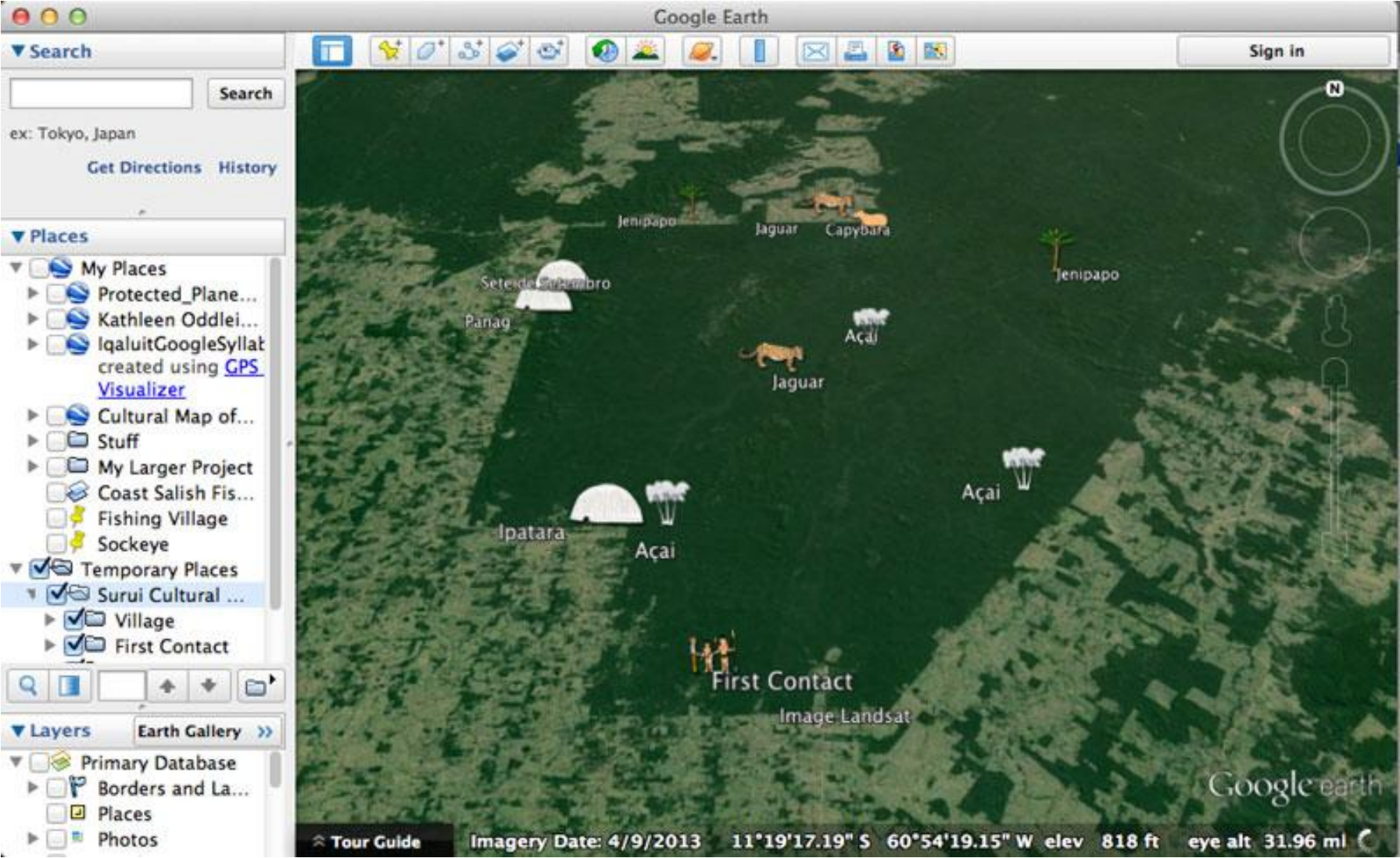
Custom Icons

Custom Icons

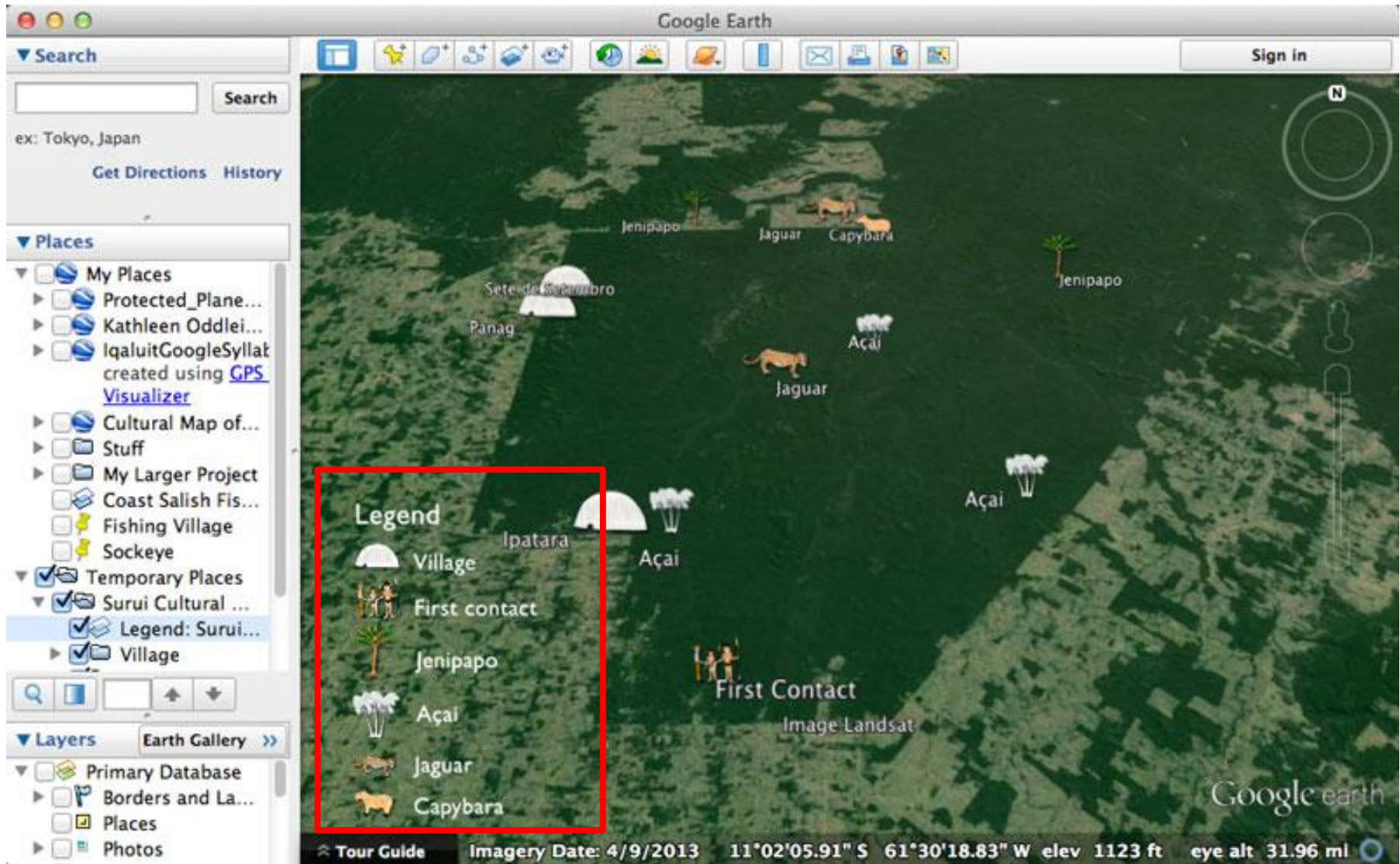
- Make your map readable
- Can incorporate relevant symbols or artistic style



Before



After



Creating Custom Icons

- Design your icons
- Use PNG files for transparent background
- Host on the web or use files from your desktop



village



first contact



açai



jenipapo

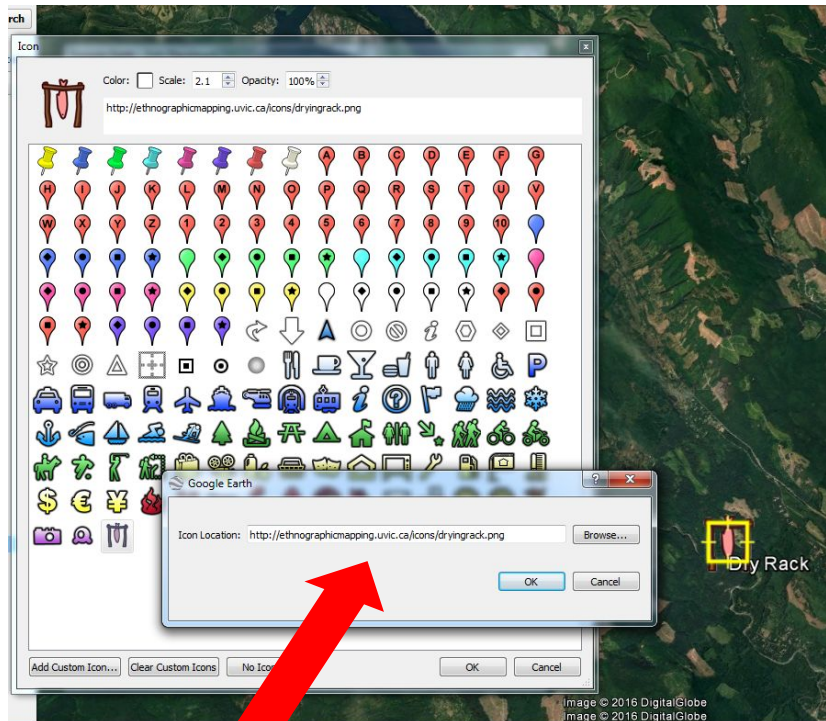
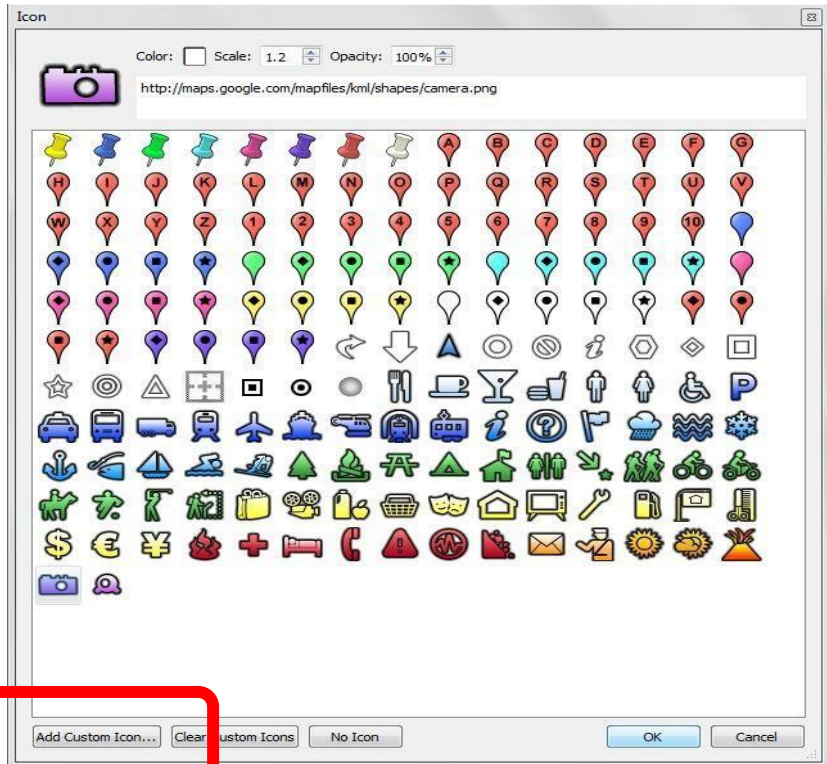


jaguar



capybara

Adding a Custom Icon



<http://ethnographicmapping.uvic.ca/icons/dryingrack.png>

Hands-on Activity

1. Download the ua_surui_map_before.kmz file from the website
2. Open in Google Earth
3. Add a custom icons for:



village



first contact



açai



jenipapo



jaguar



capybara

4. Save the file as KMZ.

Sharing your Map

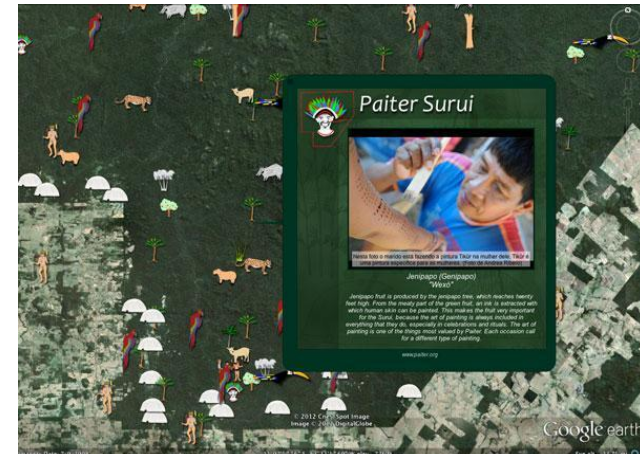
Examples of Cultural Maps

Surui Cultural Map

The Surui Cultural Map was created by the Surui tribe, an indigenous people of the Brazilian Amazon. This map contains almost 300 culturally significant sites in their rainforest, including historical battles, sacred sites, and places where important animals, trees, and plants are found. Surui youth built this map, taking photos and videos, and collecting stories from their elders (such as from the time before first contact with the modern world) to add rich detail to the map.

Tools used: *Google Earth, Spreadsheet Mapper*

- see the video [[LINK](#)]
- see the map [[LINK](#)] www.paiter.org/mapa/



Examples of Cultural Maps

Ngarluma Ngurra map

The Ngarluma Ngurra map animates and embeds the cultural traditions and histories of the Ngarluma people, an indigenous people of Western Australia, into Google Earth so that you can explore rich content and share with others. This map was a collaboration with Ngarluma elders, a Ngarluma anthropologist, film-makers, photographers, software developers and writers to create a cultural heritage tool for the next generation of Ngarluma people and to preserve and promote Ngarluma culture to broader public.

Tools used:

*Google Earth, Spreadsheet Mapper,
Google Maps Engine*

- see the map [[LINK](#)]



Examples of Cultural Maps

Inuit Place Names Project

Map of Inuit place names in Canada. The [Inuit Heritage Trust](#) has been working with Inuit elders to record indigenous place names with the reasoning behind the name.

Tools used: *Google Earth*

- see the maps [[LINK](#)]

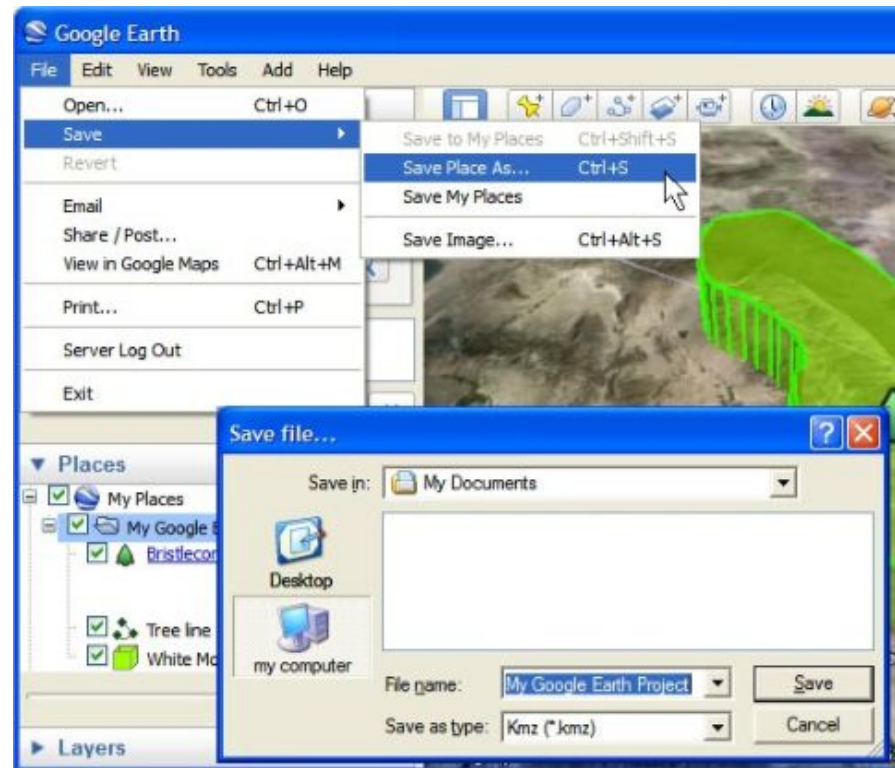


Sharing your KML File

1. Right-click on your folder, and click **Save Place As...**

2. Name your file, and save to your desktop.

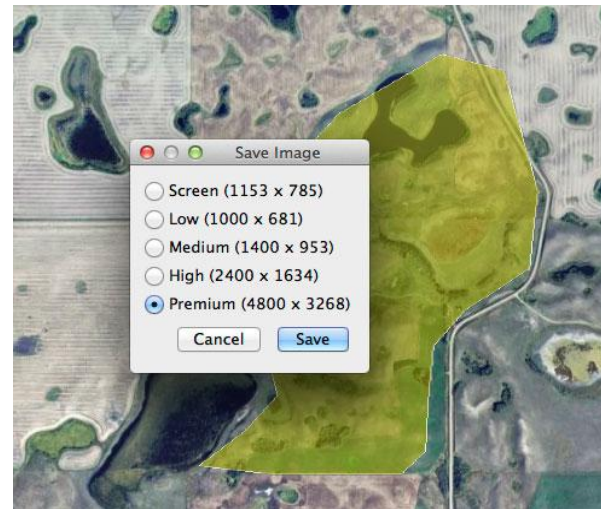
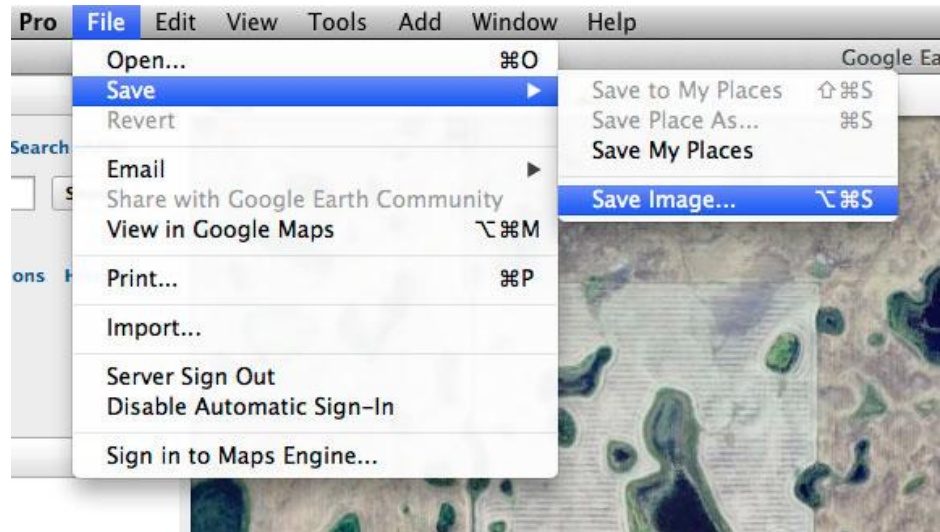
3. Send to your colleague as an attachment or put the file on your internal server.



Printing Options: Google Earth Pro

1. Go to File > Save > Save Image

2. Select your image resolution.



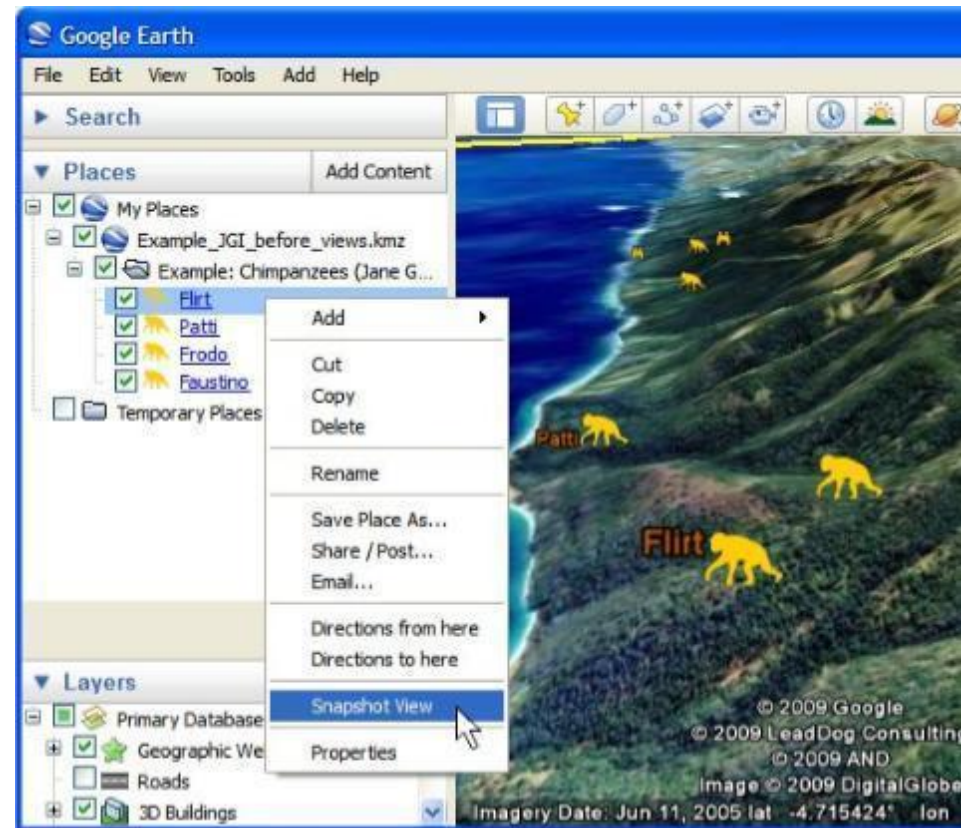
Prepare your KML for Presentations

1. Change the view angle or perspective to a good position for the point (make sure you tilt the Earth!)

2. Right-click on a placemark.

3. Choose **Snapshot View**.

4. Repeat again for other placemarks!



Best-practices for Sharing Data

- Know that when you create a KML file on your computer, you are the only one who can see that file until you start sharing it with others.
- Start a conversation with the community about what should be shared and whom it can be shared with
- Ensure you have appropriate permission before sharing
- If you're not sure, don't share it

Technical Tips

You'll want to cache Google Earth imagery if...

- you'll be interviewing in a low-bandwidth location
- you'll be interviewing in a location with no internet

How to cache imagery:

1. Draw a quick polygon around what you want to cache
2. Turn off layers in Layers Panel (unless you need them)
3. Clear the cache (Google Earth > Preferences > Cache > Clear disk cache)
4. Fly around the area of interest, letting imagery load and cache
5. Turn off wifi and test your cache

Pro tips:

- You can cache up to 2000MB of imagery - so prioritize:
 - Do a low-resolution sweep of a larger area OR
 - Do a high-resolution sweep of a smaller area
- Monitor how much cache space you're using as you go
- Save cache folders of locations you frequently work in
- Get a hard copy of a satellite or aerial image of the area you work in and use it as a Super Overlay in Google Earth Pro