

# The Geography of Japanese American Incarceration



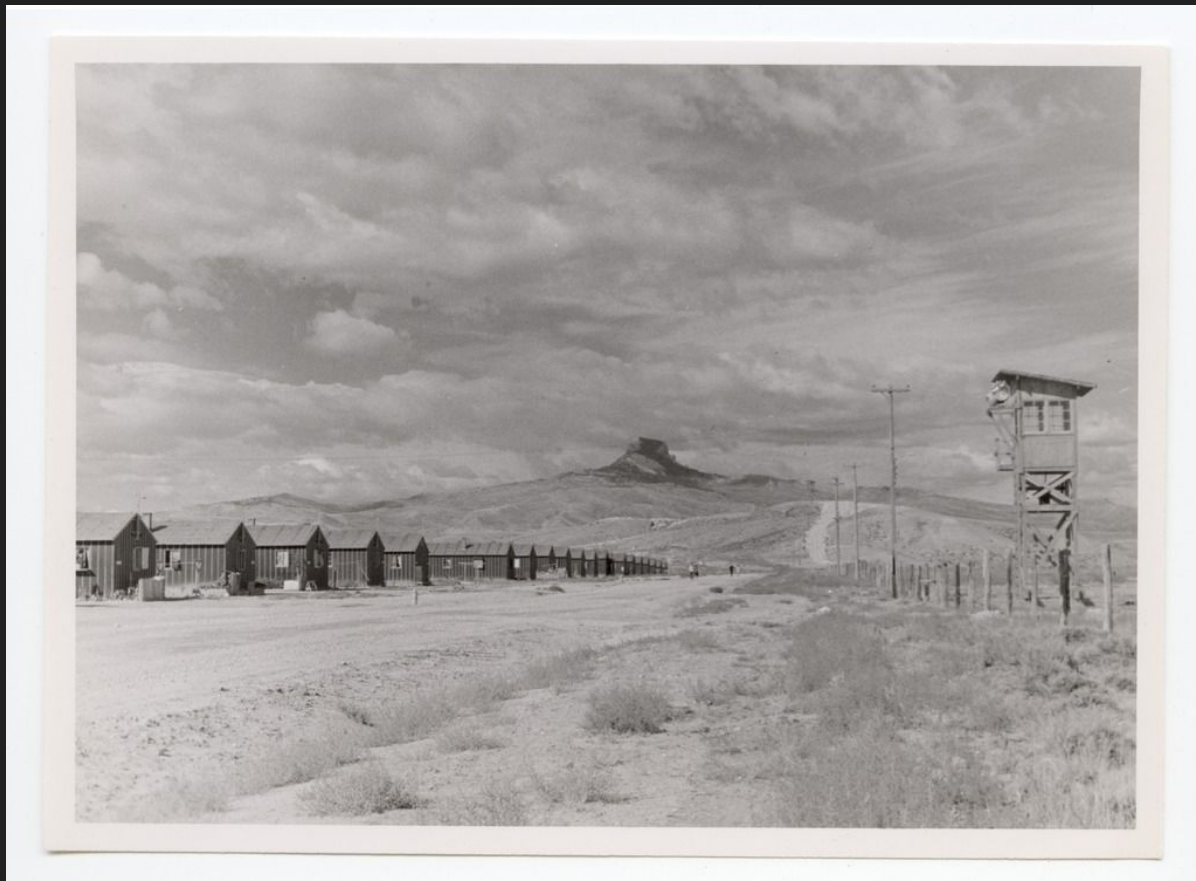
Bainbridge Island, Washington. March 30, 1942. Families in Bainbridge Island, Washington wait for the transport to an assembly center. Most incarcerated were sent to Manzanar, California though some were eventually transferred to Minidoka, Idaho. In this image, Kikuyo (back left) and Henry Takayoshi wait at the Eagledale ferry dock with their children (left to right), Shizue, Mieko, Kiyoko, and Takoto.



Hayward, California. May 9, 1942. Members of the Mochida family awaiting an evacuation bus. Mochida operated a nursery and five greenhouses on a two-acre site in Eden Township.



Tanforan assembly center, San Bruno, California. April 29, 1942. Tanforan assembly center was opened two days before the photograph was taken.



Heart Mountain concentration camp in Cody, Wyoming. Date unknown. This image depicts one of the edges of Heart Mountain concentration camp with view of a guard tower and barracks.



Photograph of Granada (also called Amache) concentration camp in Colorado taken between 1942 and 1945.



Jerome Concentration Camp, Dermott, Arkansas. January 18, 1944. Young children sit outside a barrack.





Tule Lake concentration camp, Newell, California. 1943. An image of the stockade (a cell where multiple people were held) at Tule Lake concentration camp. Tule Lake was a high-security segregation center for incarcerated individuals who responded “no-no” on the loyalty questionnaire. Incarcerated individuals at Tule Lake who were deemed “disloyal” were temporarily housed in the stockade and jail.

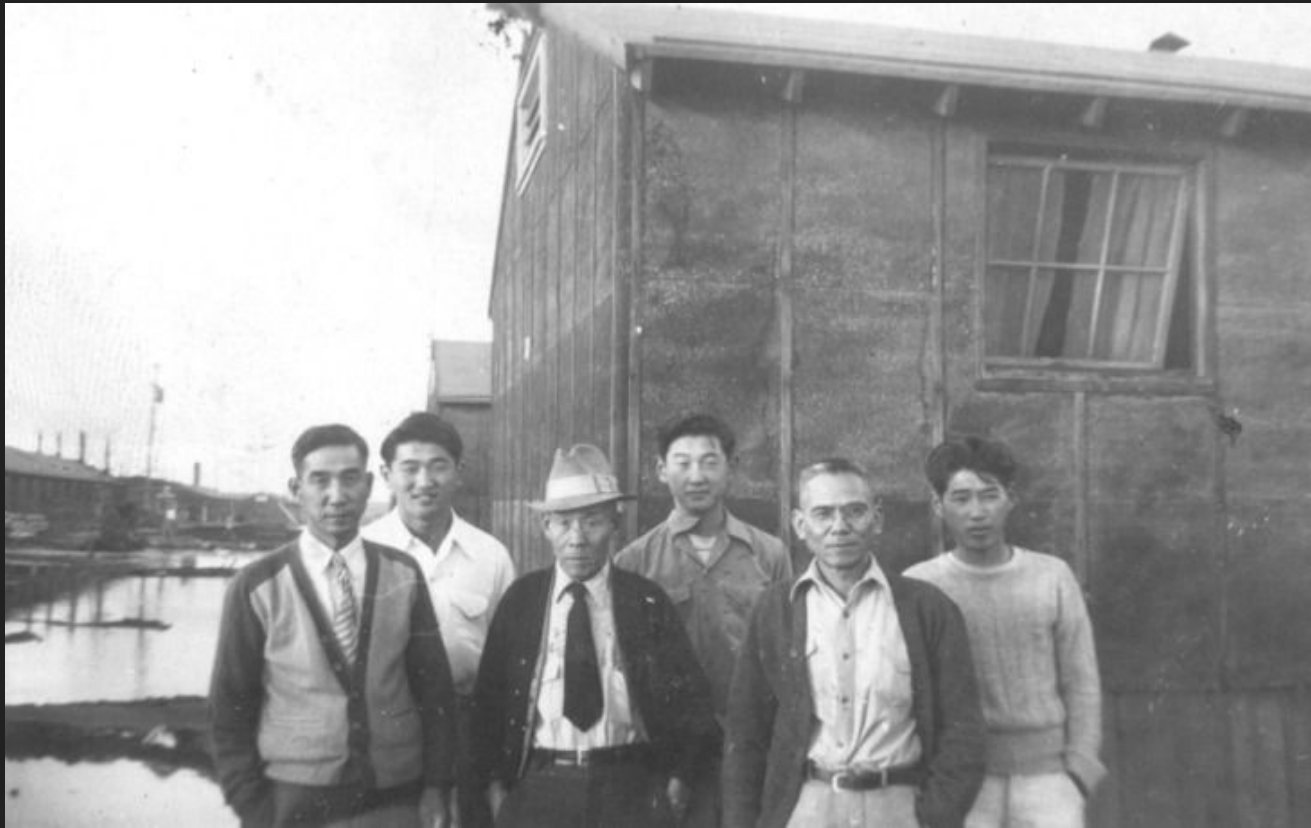




Tule Lake concentration camp, Newell, California. September 1943. Trucks carrying Japanese Americans who responded “no-no” to the loyalty questionnaire arrive at Tule Lake.



Manzanar concentration camp, Independence, California. 1942-1943. An image of the cemetery at Manzanar concentration camp. The white pillar is a memorial to the dead funded and built by the incarcerated themselves. The translation reads: "soul consoling tower."



Minidoka concentration camp, Jerome County, Idaho. 1943. A family stands in front of their barracks. For many incarcerated, the dramatic shifts in weather at Minidoka were challenging. In 1942, the temperature ranged from a low of 21 degrees below zero to a high of 104 degrees. Dust storms and floods were common and impacted living conditions within the barracks.



Manzanar concentration camp, Independence, California. July 2, 1942. Baseball players in a huddle. Baseball was a popular form of recreation at many of the concentration camps. Most of the playing occurred in the wide firebreak between blocks of barracks.



Gila River concentration camp, Gila River Reservation, Arizona. November 25, 1942. Momayo Yamamoto harvests spinach at the Gila River concentration camp. Many Japanese Americans worked in agriculture during their incarceration to make money.



Granada (Amache) concentration camp, Colorado. 1945. Teacher Marguerite Anderson instructs high school students in a typing class.





Poston concentration camp, Arizona. May 10, 1942. A guard stands in front of a Poston mess hall.





Tule Lake concentration camp, Newell, California. 1942. An aerial photo of Tule Lake.



Rohwer concentration camp, McGehee, Arkansas. November 25, 1942. Students meet for study hall in one of Rohwer's mess halls.