

A woman in profile, facing right, is the central focus. Her head is overlaid with a complex network of blue lines and nodes, representing digital connectivity or AI. The background features a glowing globe with various icons and a dark blue space filled with abstract data patterns and light trails. The overall aesthetic is futuristic and technological.

# AI for Smarter Documentation




**Felix Jumason**



Blackie\_360



Felix Jumason





**\$whoami**

**! AI Expert**



**Why did the technical writer bring a ladder to work?**



**LET'S  
DO THIS!**



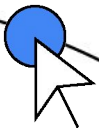
# When to use and not use AI


## When to use AI

- Overcome writer's block: AI can generate ideas and jumpstart your creative flow.
- Break through research bottlenecks: Summarize complex information or rewrite sentences for clarity.
- Repetitive tasks: Automate tasks like writing product descriptions or social media posts.
- Content exploration: Generate different variations of text to explore writing styles or angles

## When not to use AI

- Critical or confidential documents: For sensitive information, rely on your own expertise and judgment.
- Highly creative content: AI may struggle with unique concepts or humor.
- Plagiarism: Always fact-check and edit AI-generated content to ensure originality.
- Formal writing: AI may not capture the nuances of formal styles like academic papers.





# Automating Documentation Creation



**Scribe** 

**Scribe AI**





A tool designed to capture user actions and automatically generate step-by-step guides

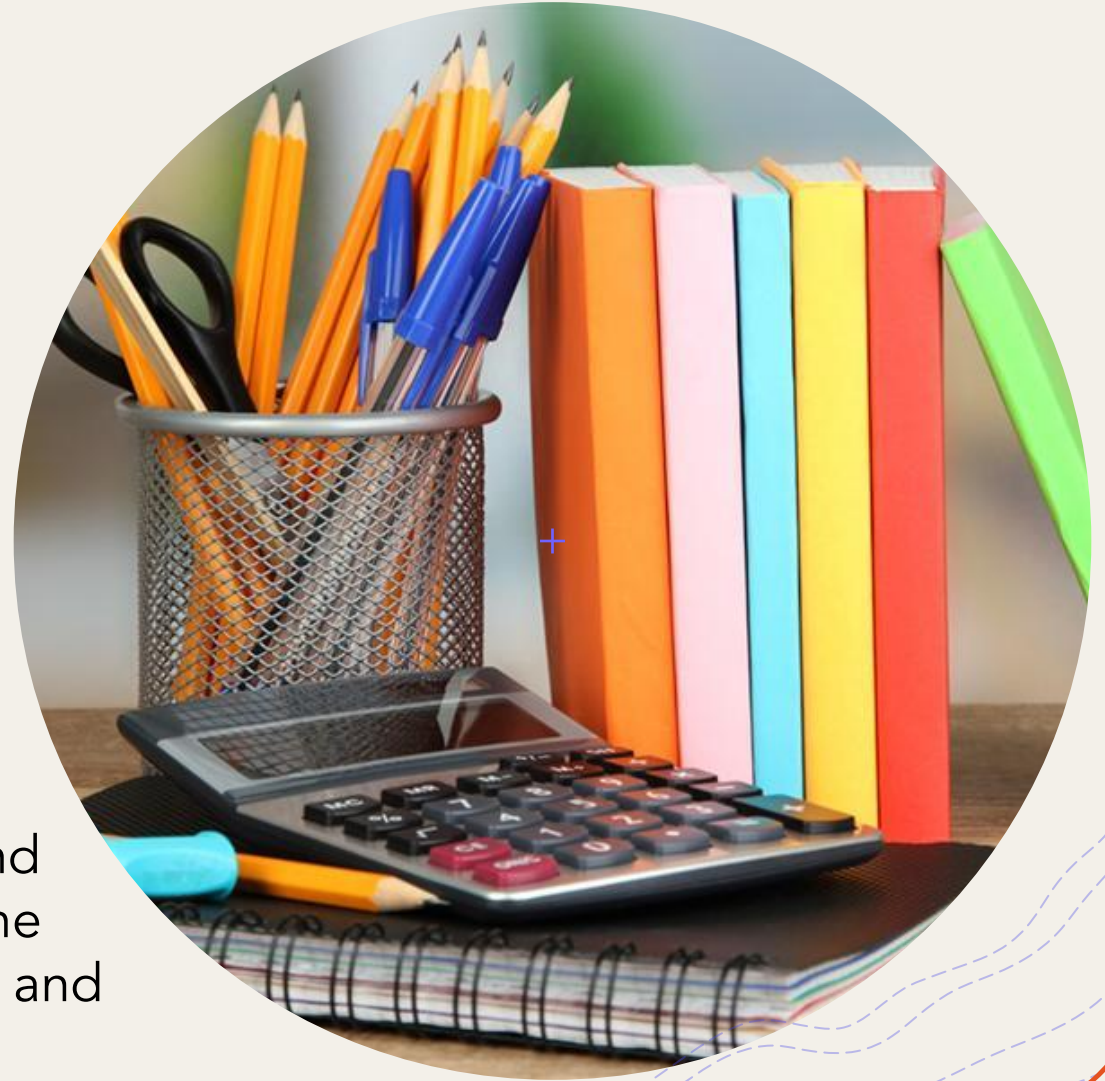


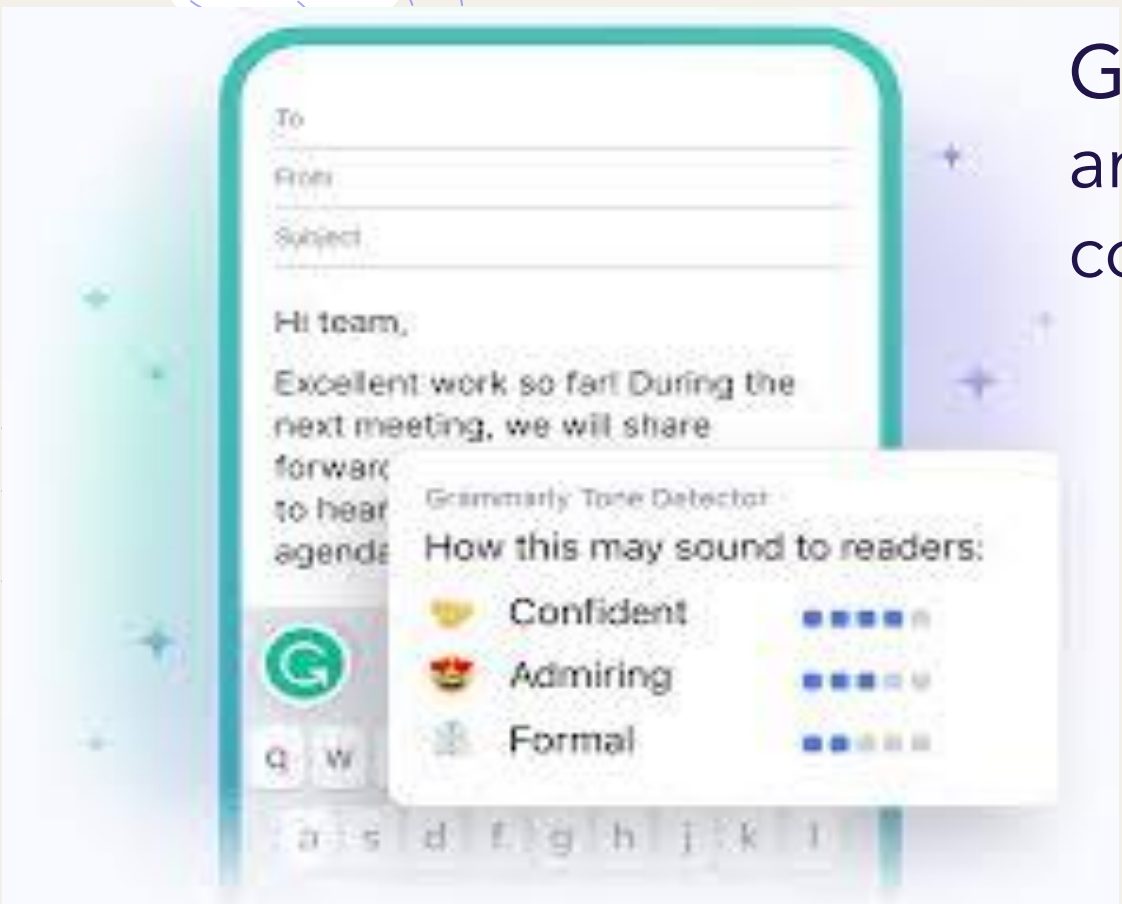
ScribeHow records user actions in a browser or application, captures screenshots, and generates a detailed, annotated guide.

- Integration: Can be integrated with knowledge bases and content management systems (CMS) to streamline the documentation creation process

# Formatting and Layout

AI can automate the tedious task of formatting documentation, ensuring consistent styles, layouts, and structures across all content. This not only improves the overall aesthetic appeal but also enhances readability and navigability for users





Grammarly: Provides grammar checking and style suggestions to ensure consistent language use.

Uses advanced NLP algorithms to analyze text for grammatical correctness, tone, and style, providing real-time feedback and suggestions.





# Adobe Sensei

## AI Design Tool

- +use AI to automatically apply design templates, adjust layouts, and ensure brand consistency across documents.
- +example : Canva's Magic Resize.

# Quality Assurance



## StyleGuard

Uses AI to check for errors, inconsistencies, and factual inaccuracies in documentation

Analyzes text for grammatical errors, stylistic inconsistencies, and factual inaccuracies using machine learning models trained on large text corpora

## AI Proofreading Tools

Tools like Grammarly, Hemingway, and ProWritingAid.

Utilize NLP to analyze text for grammar, style, readability, and clarity. Provide real-time suggestions and corrections.



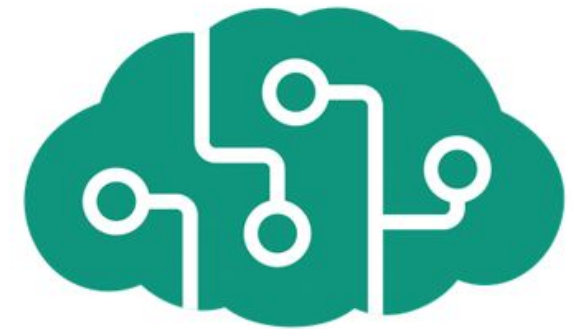
# Multilingual Support



# What is it exactly

- AI-powered translation and localization services can assist in creating and maintaining documentation in multiple languages, enabling global accessibility and increasing the reach of the content.

## AI-Powered Localization Tools: **Lokalise** and **Smartling**



 Microsoft  
Cognitive Services

# The Future of AI for Documentation



**Advanced Data Analytics:** AI-powered analytics will provide deeper insights into user behavior, content effectiveness, and documentation performance, enabling data-driven decisions and continuous improvement.



**Natural Language Processing (NLP):** NLP will enable AI to understand and interpret human language more accurately, leading to sophisticated chatbots and virtual assistants for personalized and contextually relevant information delivery.



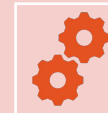
**Content Automation:** AI will automate content creation, including writing, editing, and formatting, streamlining the documentation process and freeing up time for higher-level tasks.



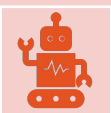
**Augmented Reality (AR) and Virtual Reality (VR):** AR and VR technologies will enhance documentation with immersive experiences, such as real-time instructions and simulated training scenarios.



**Voice Recognition:** AI-powered voice recognition will enable hands-free interaction with documentation, improving accessibility for users.



**Personalization:** AI will enable personalized documentation based on user behavior, offering dynamically generated content and recommendations.



**Multilingual Support:** AI-powered translation and localization services will improve, making documentation accessible to a global audience and facilitating knowledge sharing.



**Enhanced Search and Navigation:** AI will improve search functionality, providing more accurate and relevant results for users to find information quickly.



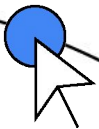
# Pros and Cons of Using AI for Writing

## Pros

- Increased Efficiency: Saves time and effort
- Overcoming Writer's Block: Sparks creativity and new ideas
- Improved Research and Content Exploration
- Reduced Repetitive Tasks: Automated content creation

## Cons

- Potential for Factual Errors: Requires careful fact-checking
- Limited Originality: May generate generic content
- Inconsistency in Style and Tone: May not capture desired voice
- Ethical Concerns: Potential for plagiarism and misuse





# Conclusion

Learn how to use AI (Artificial Intelligence)<sup>+</sup>

# Any Question



Blackie\_360



Felix Jumason



blackie360

