

Ethnographic Mapping and Indigenous Cartographies

Indigenous Mapping in
Canada - an overview



3 approaches to digital cultural mapping

1) **The “Map Biography” method**

- looks to represent the life experiences of people on a map, cumulatively
- a very powerful method of representing intensity and extensivity of land use (many sites across the land)
- effective projects can interview most or all community members (many community members involved)

3 approaches to digital cultural mapping

2) The “Significant Sites” method

- asks people to recall stories about important, sacred or cultural places
- allows us to tell the deep story, the full history, of a place, taking a lot of time to talk about/visit each place
- Fewer sites than with map biography, but highlights the very important places
- is a powerful method for inter-generational knowledge transfer, connecting younger and older people
- effective projects can be done by interviewing one or several key knowledge-holders

3 approaches to digital cultural mapping

3) The “Indigenous-Language Place Names” method

- provides an inventory of place names, their translation, and the associated stories behind the name
- It is essential to ‘get the names right’ including their location, transcription, meaning and associated stories.
Very time intensive to do a good job, and demands good linguistics skills.
- effective projects require fluent speakers, culturally knowledgeable

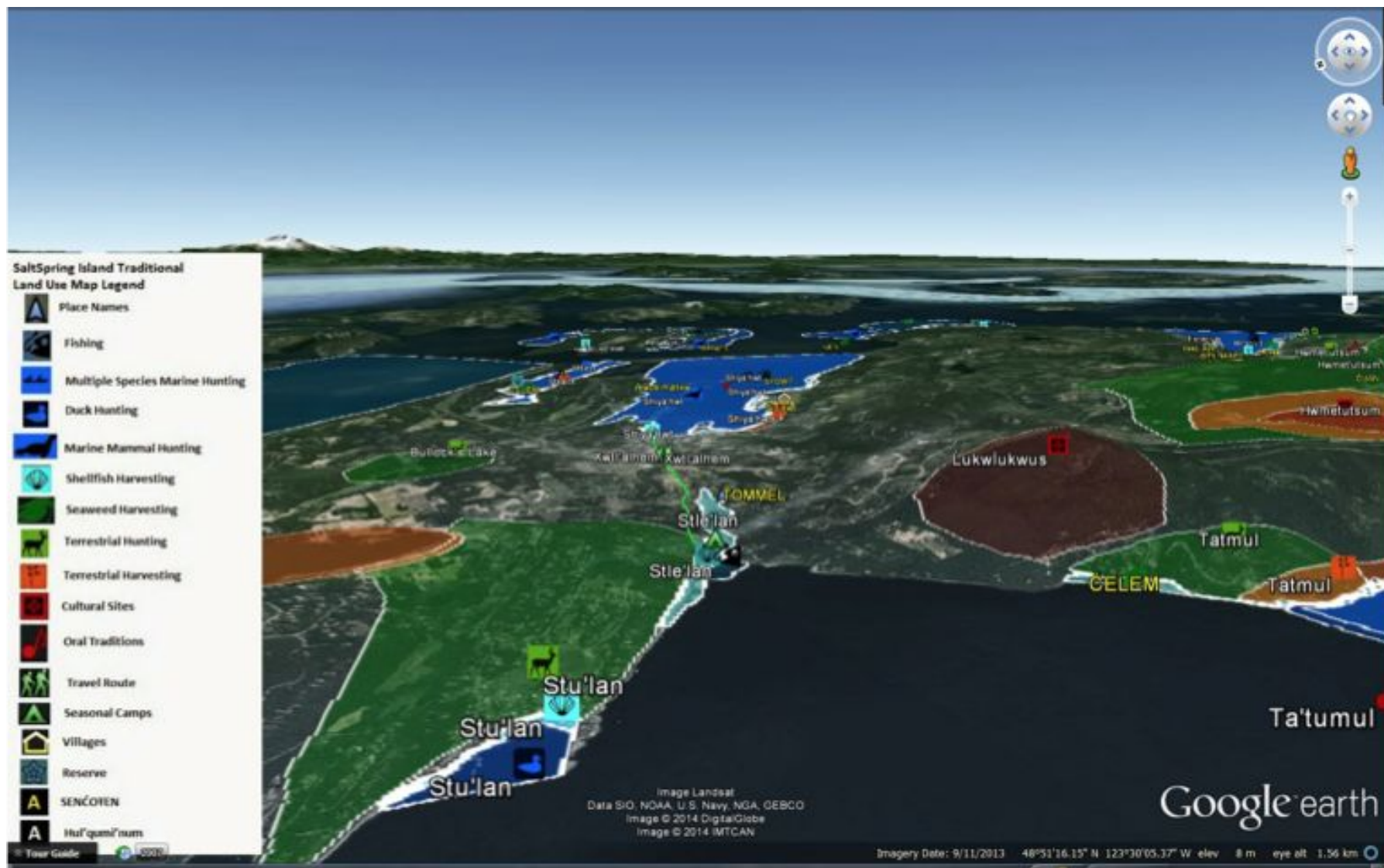
Map Biographies

Snuneymuxw Land Use and Occupancy



UVic Anthropology Student Class Project by Courtney Moher

Saltspring Island Coast Salish Significant Places



UVic Anthropology Student Class Project by Britney Oswell

Lekwungen Territory Ethnographic Mapping project



UVic Anthropology Student Class Project by Paige Erickson-McGee

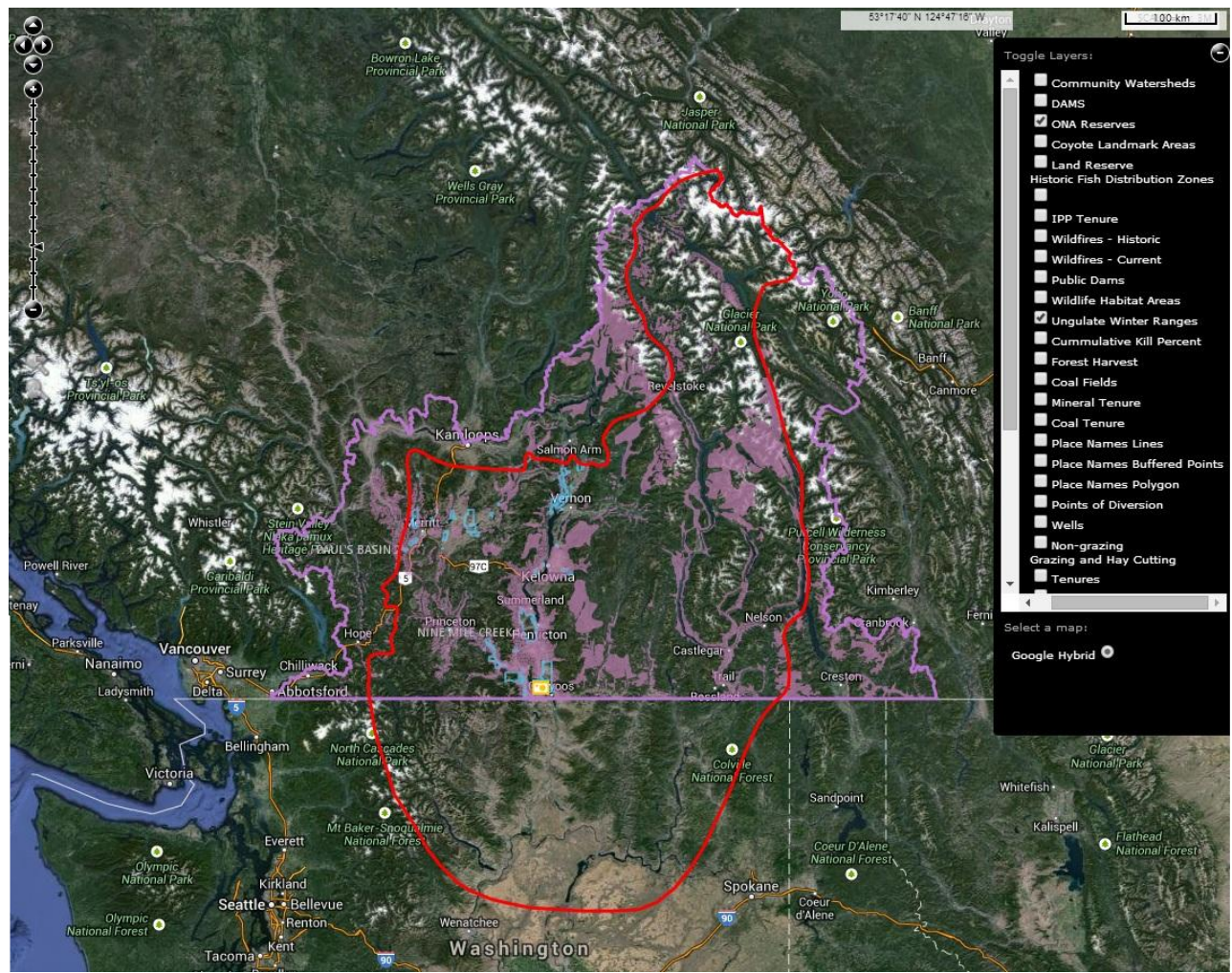


Significant Places mapping in Google Earth

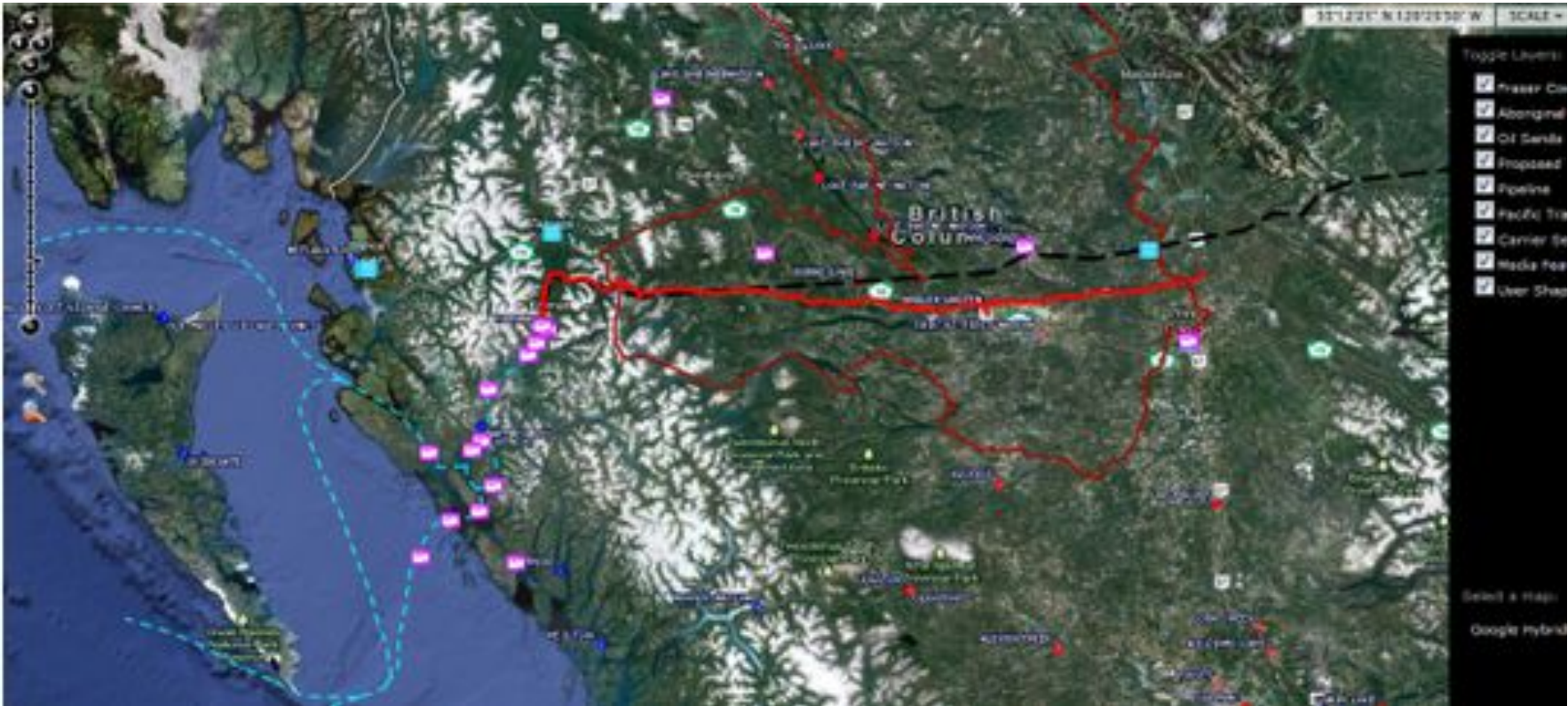


Voices on the Land Okanagan Nation

http://voicesontheland.org/#-13945152_5949208_-12500798_6960622_1_2000



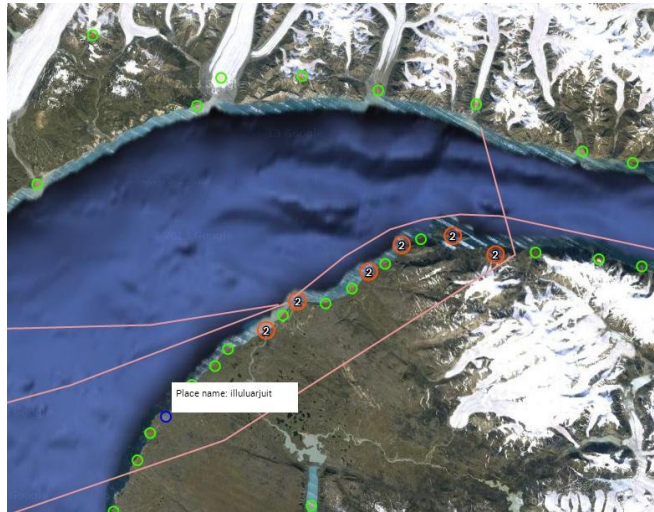
Carrier Sekani Online Atlas



<http://www.carriersekani.ca/programs-projects/carrier-sekani-online-atlas/>

Pan Inuit Trails

“The Northwest Passage and the Construction of Inuit pan-Arctic Identities”



http://www.paninuittrails.org/index.html?module=module_paninuittrails#

Stz'uminus Storied Places Project (Coast Salish)

Ladysmith Area Hul'q'umi'num' ...
A prototype map created as part of the Stz'uminus Storied Places Project, in collaboration with Stz'uminus First Nation [more](#)

Ladysmith_Area_Placenames

Styled by name

- Hwkw'ulhtun (1)
- Hwkwitsum (1)
- Hwkwumluhwuthun (1)
- Hwqwaaythun (1)
- Hwsaaqw'um (1)
- Hwsuxween (1)
- Kw'eyawus (1)
- Kwikwumluhw (1)
- Q'ulits' (1)
- Shhwulhnuts (1)
- Shqw'hi'wun (1)
- Shts'uminus (1)
- Shustth'upsum (1)
- Shwethuqun (1)

Hwsaaqw'um

Click Play to hear the name Hwsaaqw'um

1 of 1

Videos Scroll through the videos above to learn more about Hwsaaqw'um.

description Holland Creek (and creek mouth)

Translation cow parsnip place

Use Description resource harvesting

Behind the Name Alexis Louie, Alfred Louie and Michael David shared this name. Alfred Louie recalled to anthropologist David Rozen that this place was utilized by the people from Shell Beach and elsewhere for the collection of cow parsnip, which had a variety of uses as food and medicine.

Map data © 2014 Google Imagery © 2014 Cnes/Spot Image, DigitalGlobe, IMTCAN, Landsat, Nansimo, USDA Farm Service Agency Terms

<http://www.uvic.ca/socialsciences/ethnographicmapping/projects/stzuminus/index.php>

Innu of Québec Significant Places

The image shows a Google Earth map of the Innu territory in Québec, Canada. A large green polygon highlights the Mealy Mountains National Park reserve. Numerous numbered points are scattered across the map, representing significant places. A pop-up window is open over point 20, 'Atatshi-uinipeku'. The window contains the following text:

20- Atatshi-uinipeku
Official Name: Mealy Mountains
The green polygon represents what is now the Mealy Mountains National Park reserve, as recognized by Parks Canada. This area aims to protect the ecosystems and traditional ways of life which lay within its borders. The threatened herd of Mealy Mountain caribou live within this reserve, although they used to migrate to areas far surpassing the present day borders. This herd use to be an essential element to Innu subsistence in traditional society, but now is protected and is only hunted legally.

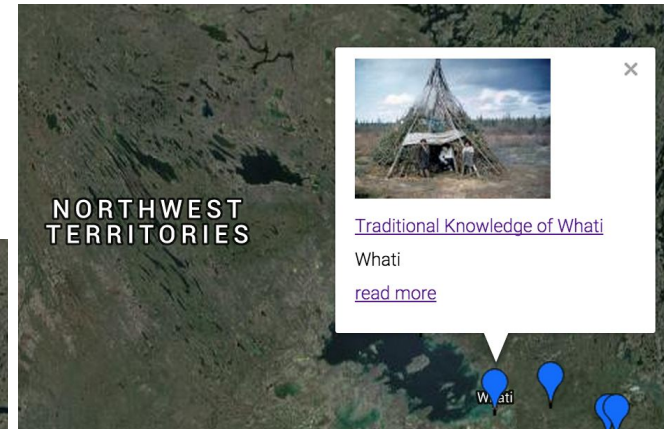
Below the text are two photographs: the top one shows a mountain range with snow patches, and the bottom one shows a river flowing through a valley with a small boat. Below the photos is the text: (Kobalewo 2011:43) and a link: Directed to: [Go here](#) - [From here](#).

At the bottom left of the map is a legend:

- LEGEND
- HISTORICAL PORTS
- WINTER/FALL CAMPS
- SUMMER/SPRING CAMPS
- RESERVE LOCATIONS

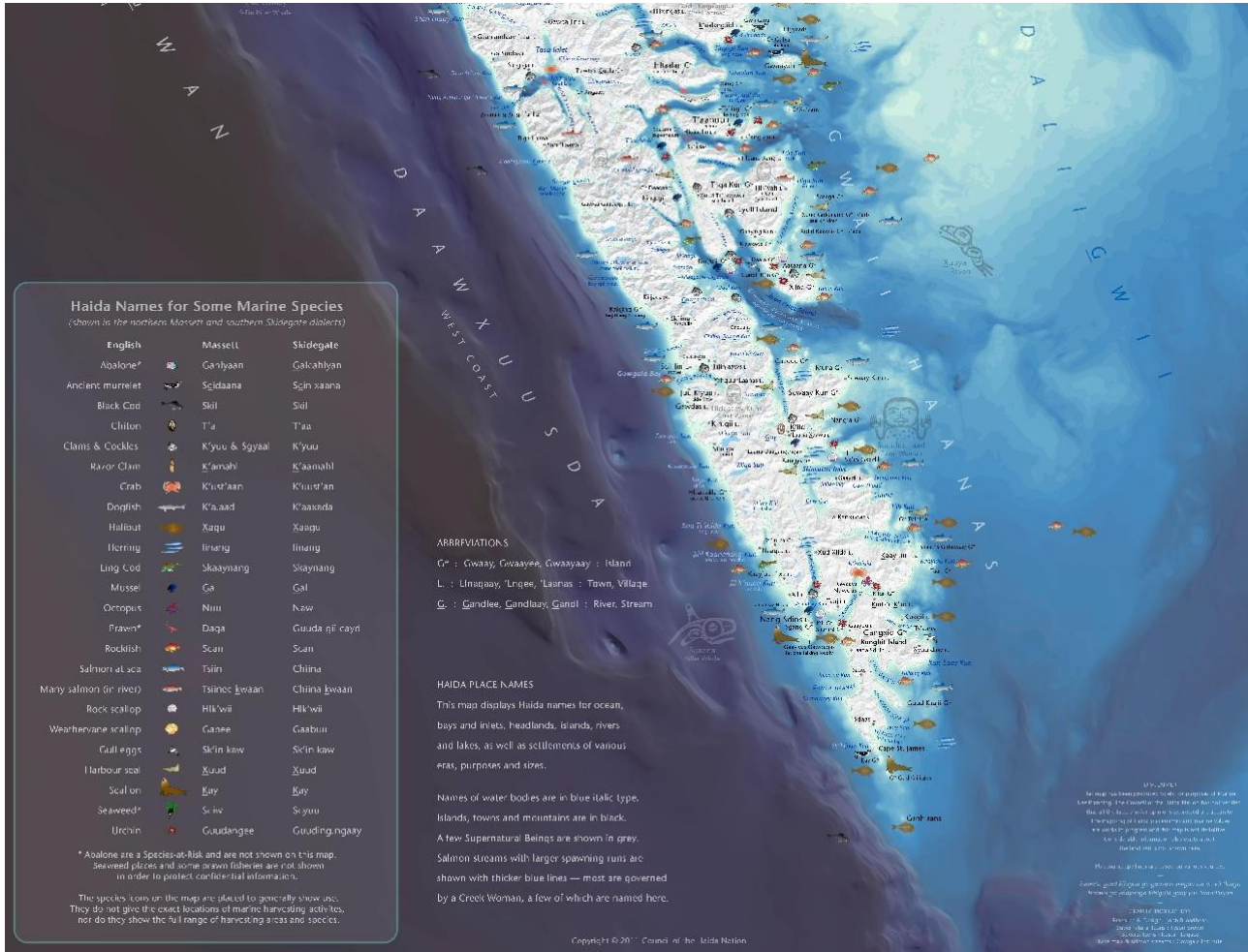
At the bottom right of the map is the Google Earth logo and the text: Data EO: NOAA, U.S. Navy, MDA, GEBCO. Image Landsat 5. The bottom status bar shows: Imagery Date: 4/9/2013, 53°09'44.35" N, 59°14'16.49" W, elev. 0 m, eye at 303.14 km.

Tłıchǫ Lands Map



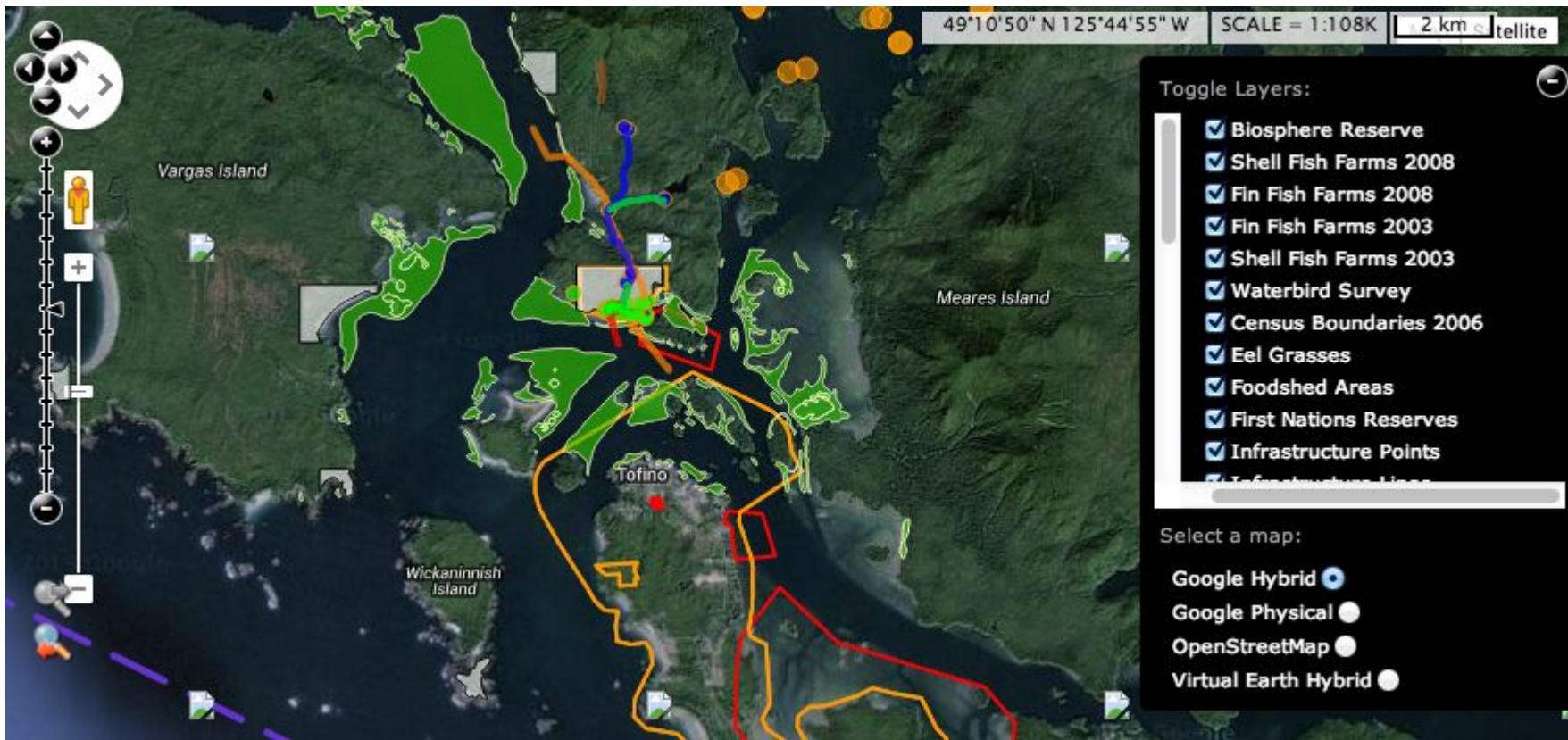
<http://www.tlichohistory.com/en/maps>

Ocean & Way of Life Haida Gwaii



http://www.haidanation.ca/Pages/documents/pdfs/marine/OceanPoster_60_Wide.pdf

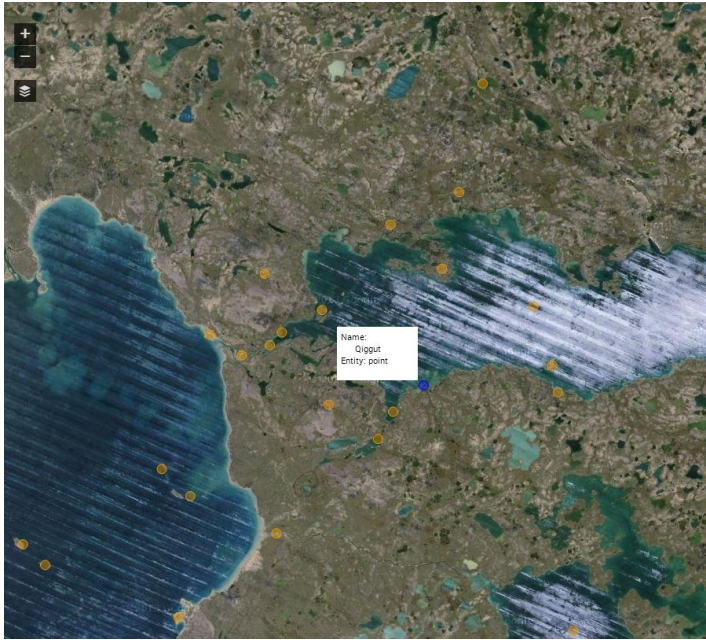
Nuu-chah-nulth Living Atlas



http://livingatlas.org/#-14059615_6295103_-13969343_6358317_10_2010

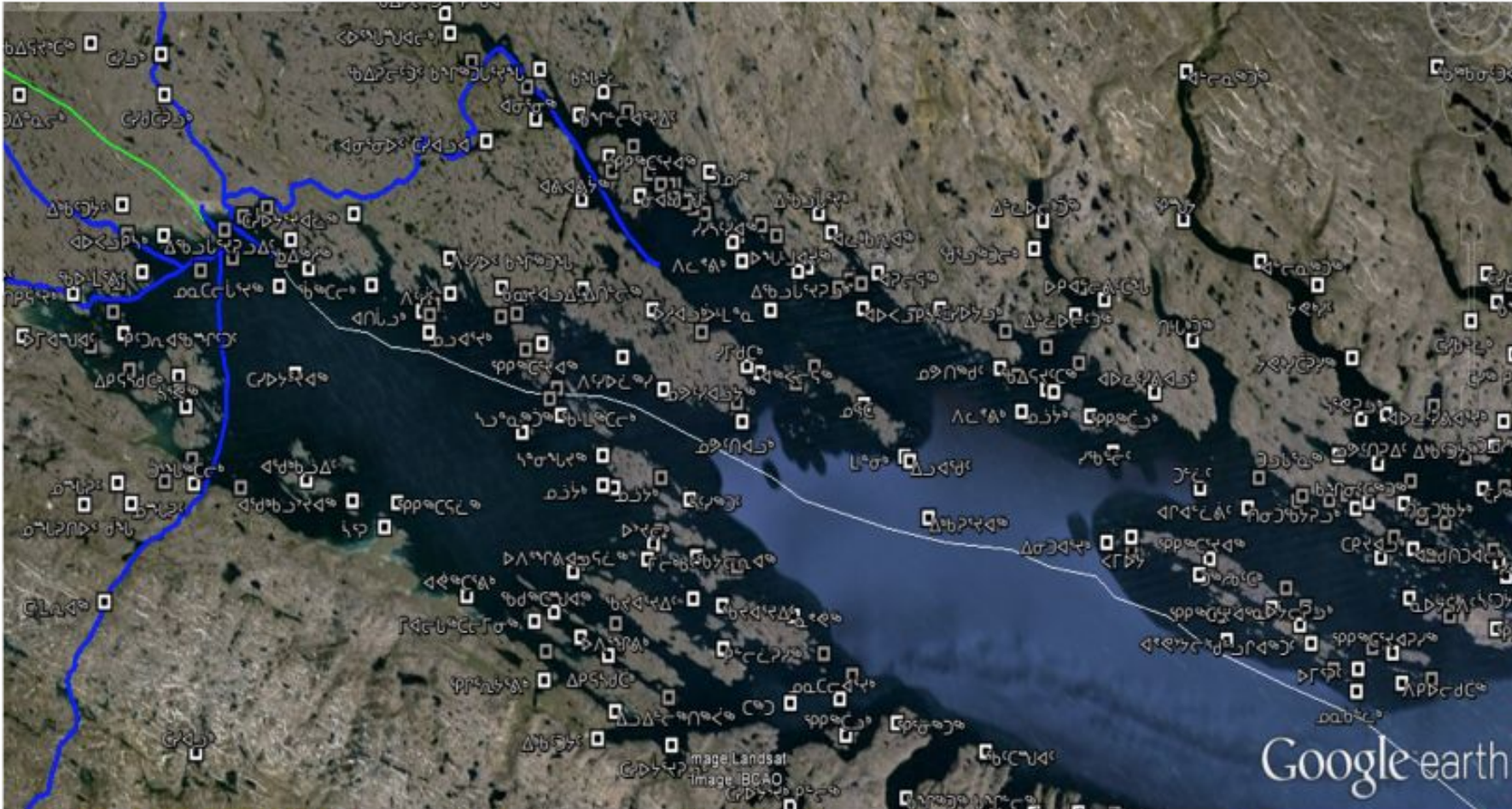
Place Names

Kitikmeot Place Name Atlas - Spoken Map



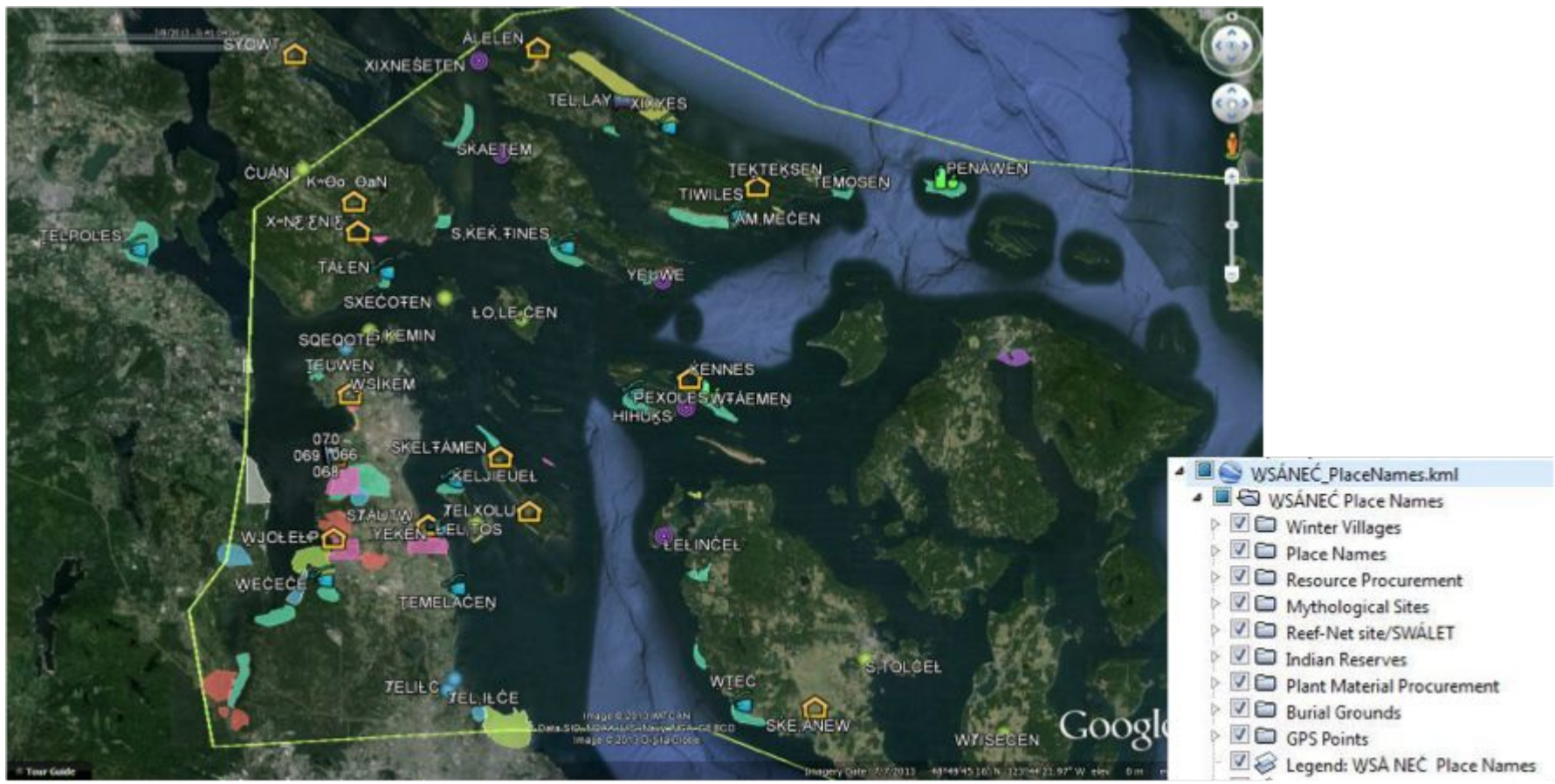
<http://kitikmeot.gcrc.carleton.ca/index.html?module=module.names>

Pond Inlet Inuktitut Place Names Project



Courtesy of Lynn Peplinski, Inuit Heritage Trust

Sencot'en Place Names by Dave Elliott, WSÁNEĆ territory



UVic Anthropology Student Class Project by James Rogers

Algonquin Nation Secretariat Place Names Webmap

The Land that Talks A Multimedia tour of Algonquin place names

< Return to Intro page

Map Satellite Topo

Browse by Type: All

Search: Go

1. Ackataka Sakaikan
2. Ackataka Sipi
3. Adams Mine
4. Anakapecakan Sakaikan
5. Anicinabe Neaci
6. Anicinabe Opacik
7. Anicinabe Sakaikan
8. Apita Sakaikan
9. Asasaweminak Sipi
10. Asikos Sakaikan
11. Asko Sakaikan
12. Abicitamo Minisi
13. Atikamek Sakaikan

Settlement Lake River Relief Travel Route Event Other

Ce projet du Secrétariat de la Nation Algonquaine a bénéficié du soutien financier du MCCCQ.

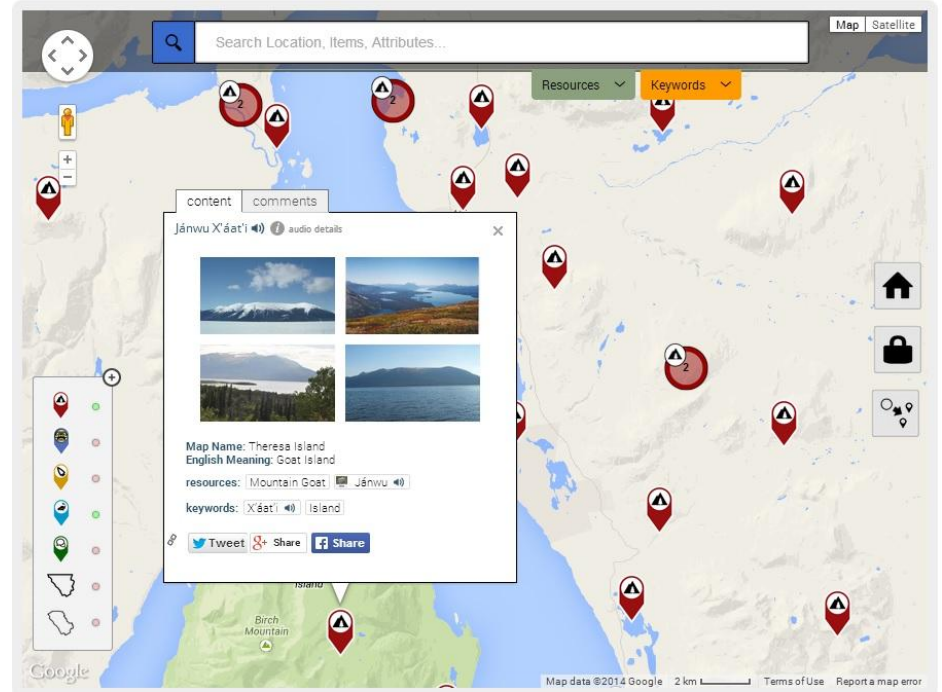
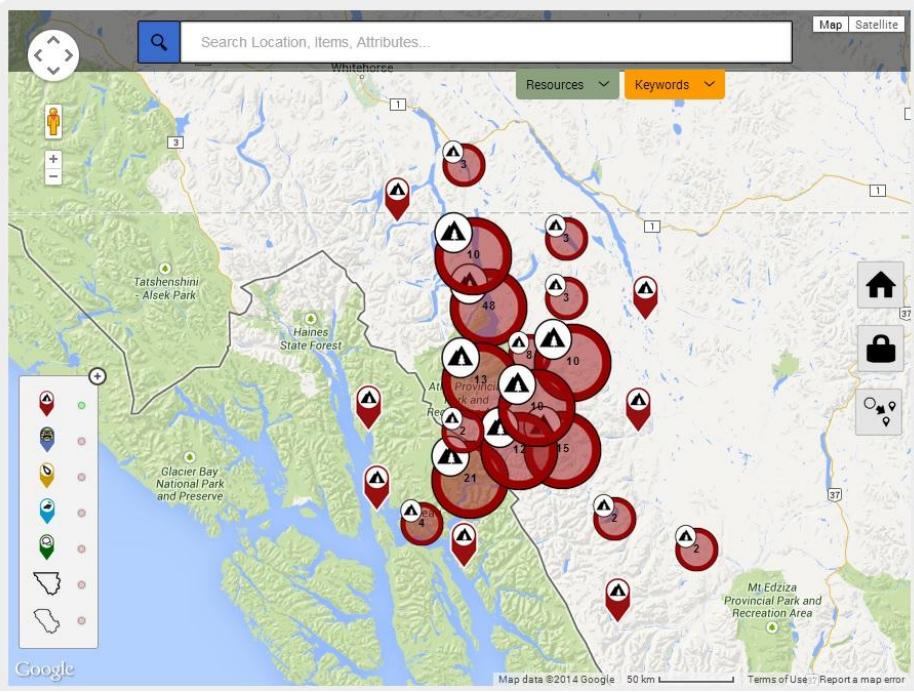
The Algonquin Nation Secretariat has received financial contribution from the MCCCQ for this project.

Culture, Communications et Constaton réminime Québec

Background photo by mindgrow

<http://www.algonquinnation.ca/toponym/en/map/>

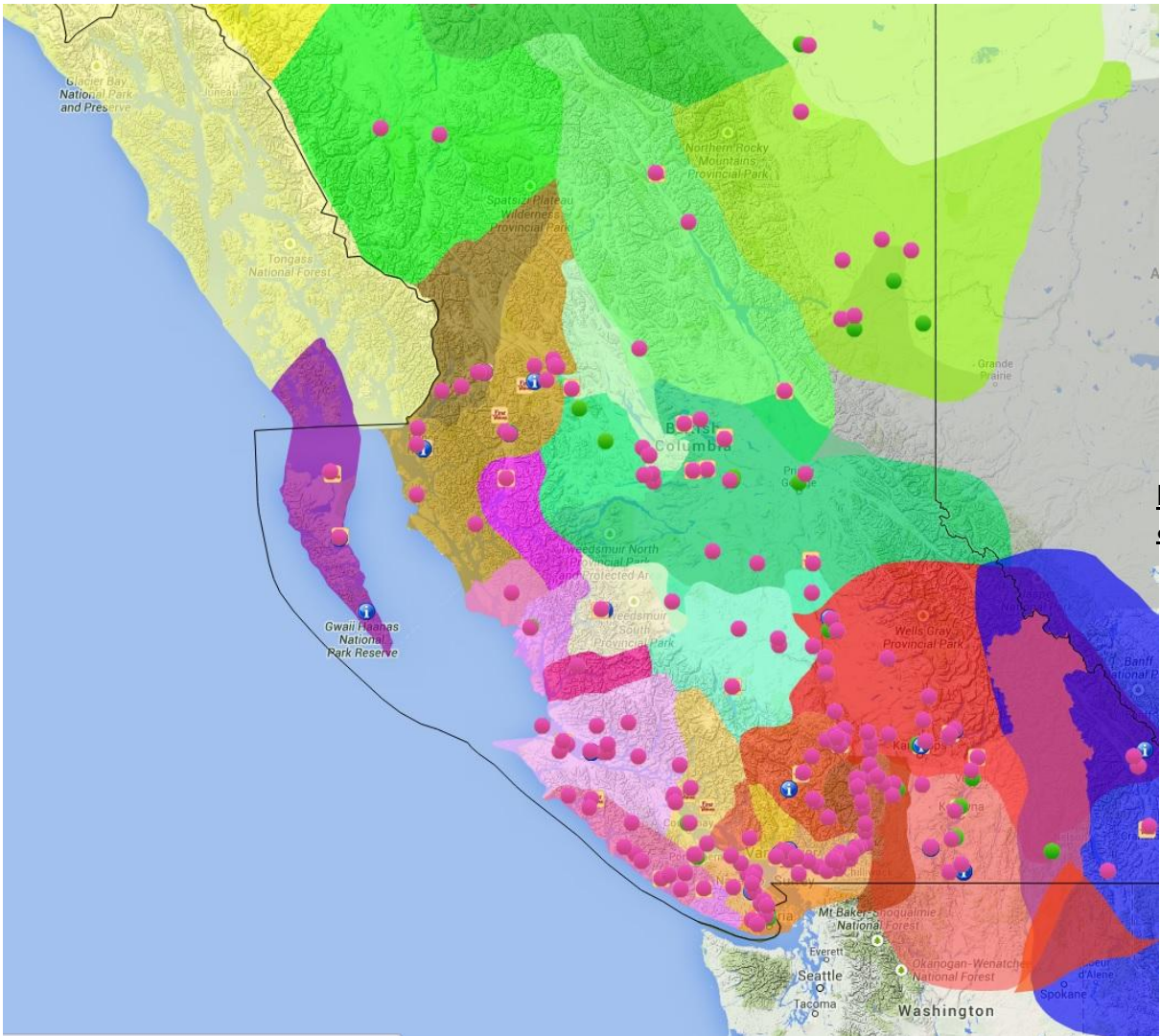
Taku River Tlingit Place Names



<http://trt.geolive.ca/map>

Other Indigenous mapping examples

First Peoples Language Map of British Columbia



<http://maps.fphlcc.ca/fphlccmap/?zoom=10&lat=54.0100000&lon=-125.7100000>

Questions?