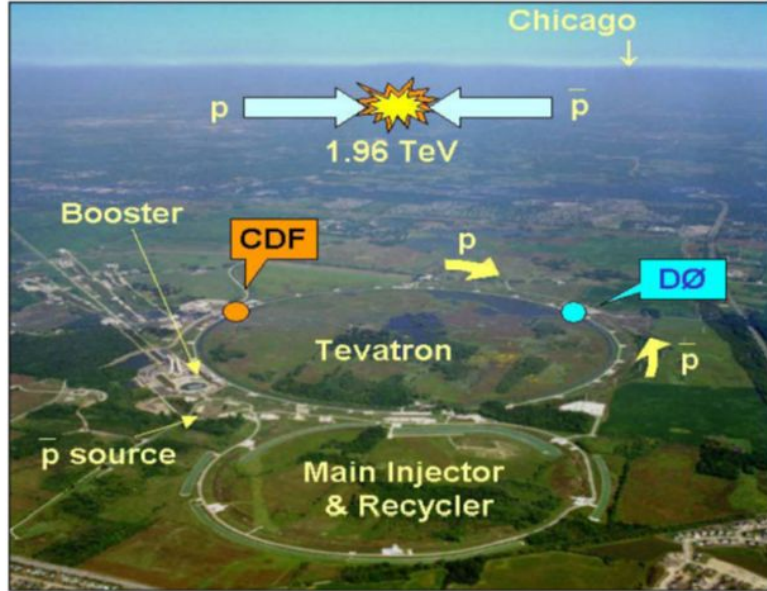
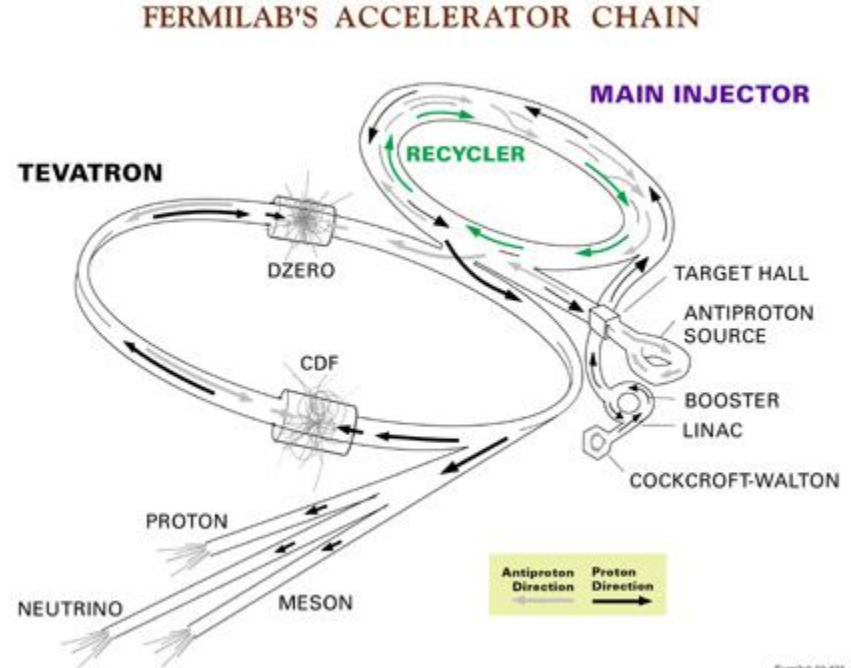


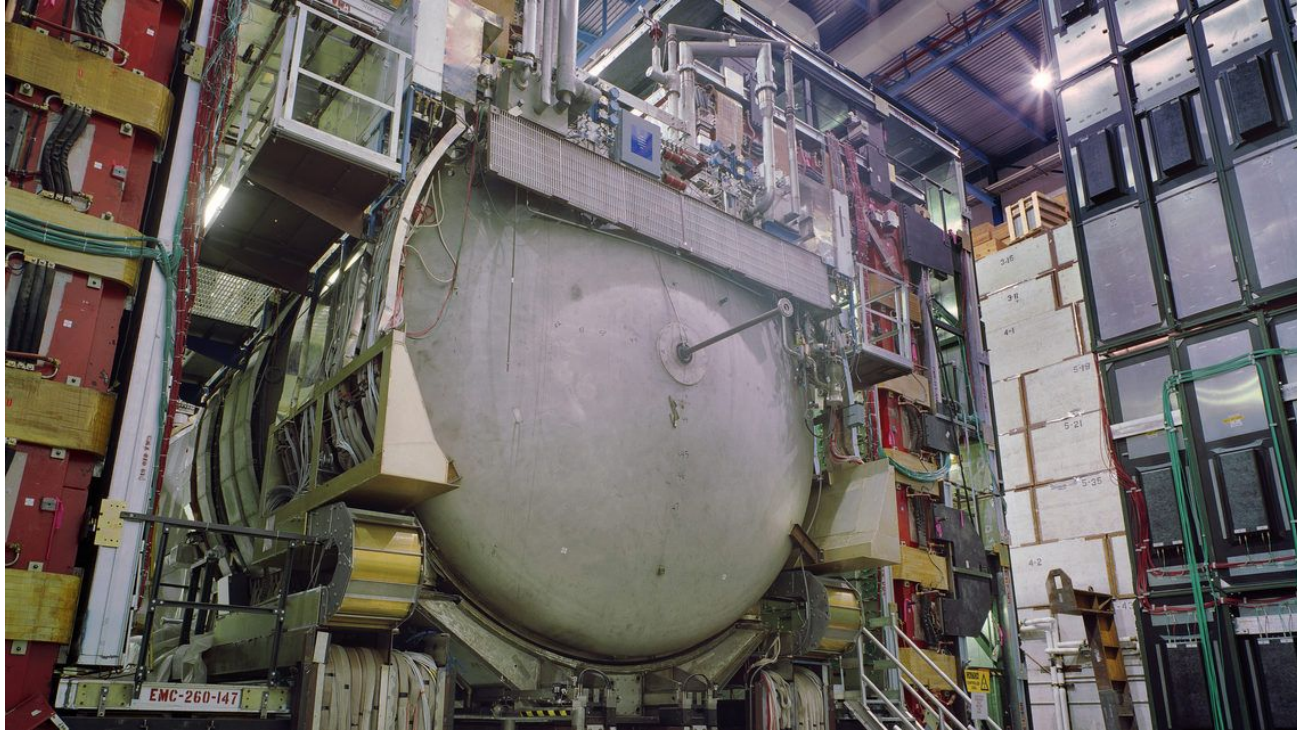
Tevatron at Fermilab (1983-2011)



- Proton - antiproton collisions
- Discovery of the top quark - 1995

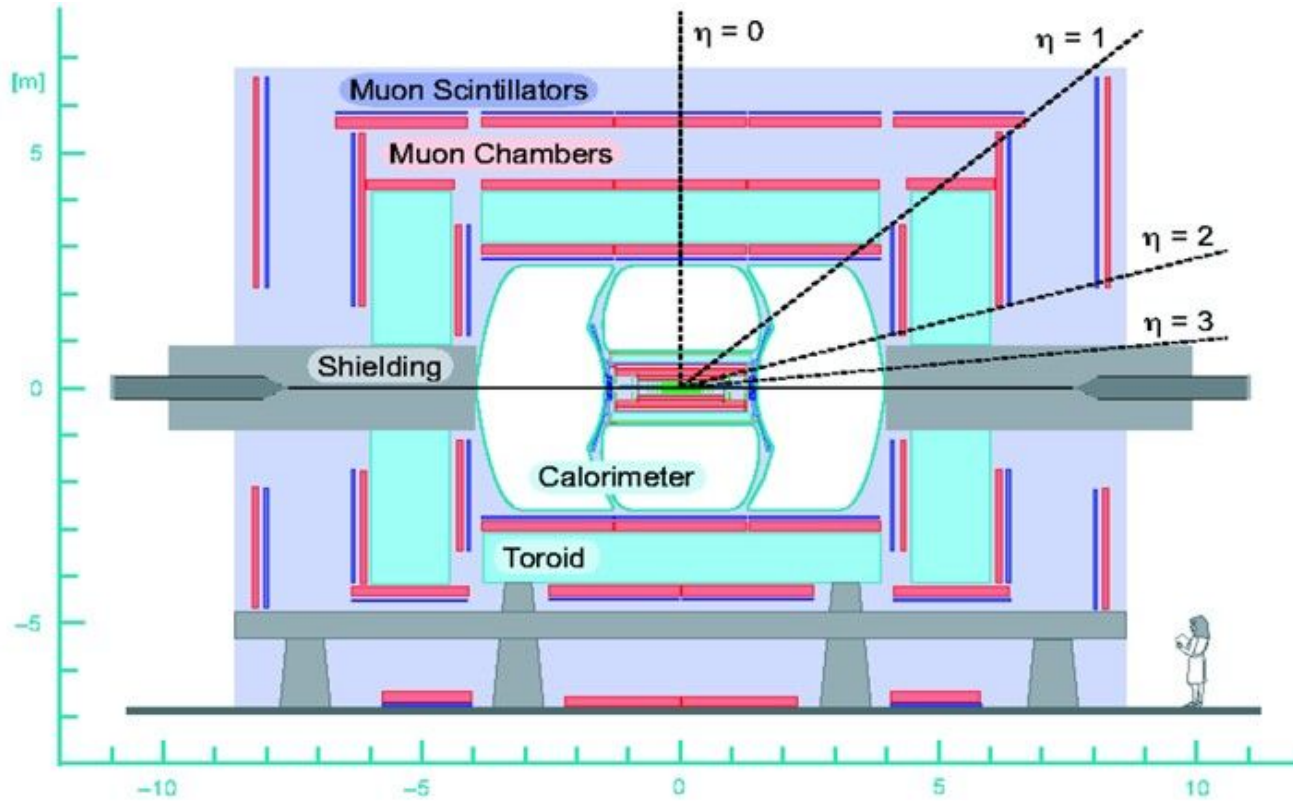


DZero Detector



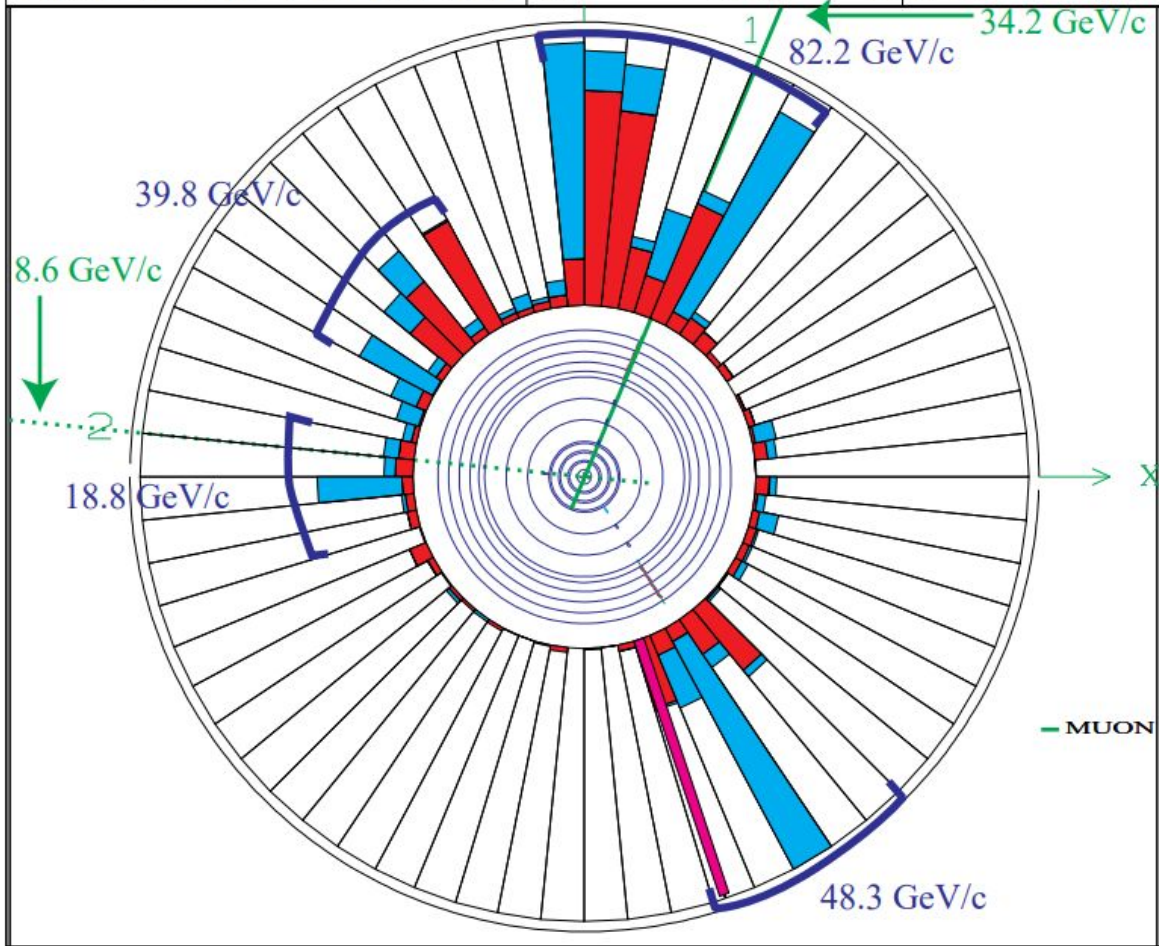
First collisions: 1985 --- Discovery of top quark: 1995

D Zero detector



D Zero event display





Classroom

Particle Physics

ENERGY

Classroom

$$J = \text{kg m}^2/\text{s}^2$$

ENERGY

Momentum

Particle Physics

eV

Classroom

$$J = \text{kg} \cdot \text{m}^2 / \text{s}^2$$

$$\text{kg} \cdot \text{m} / \text{s}$$

ENERGY

Momentum

Particle Physics

eV

eV/c

Classroom

$$J = \text{kg m}^2/\text{s}^2$$

$$\text{kg m}/\text{s}$$

$$\text{kg}$$

ENERGY

Momentum

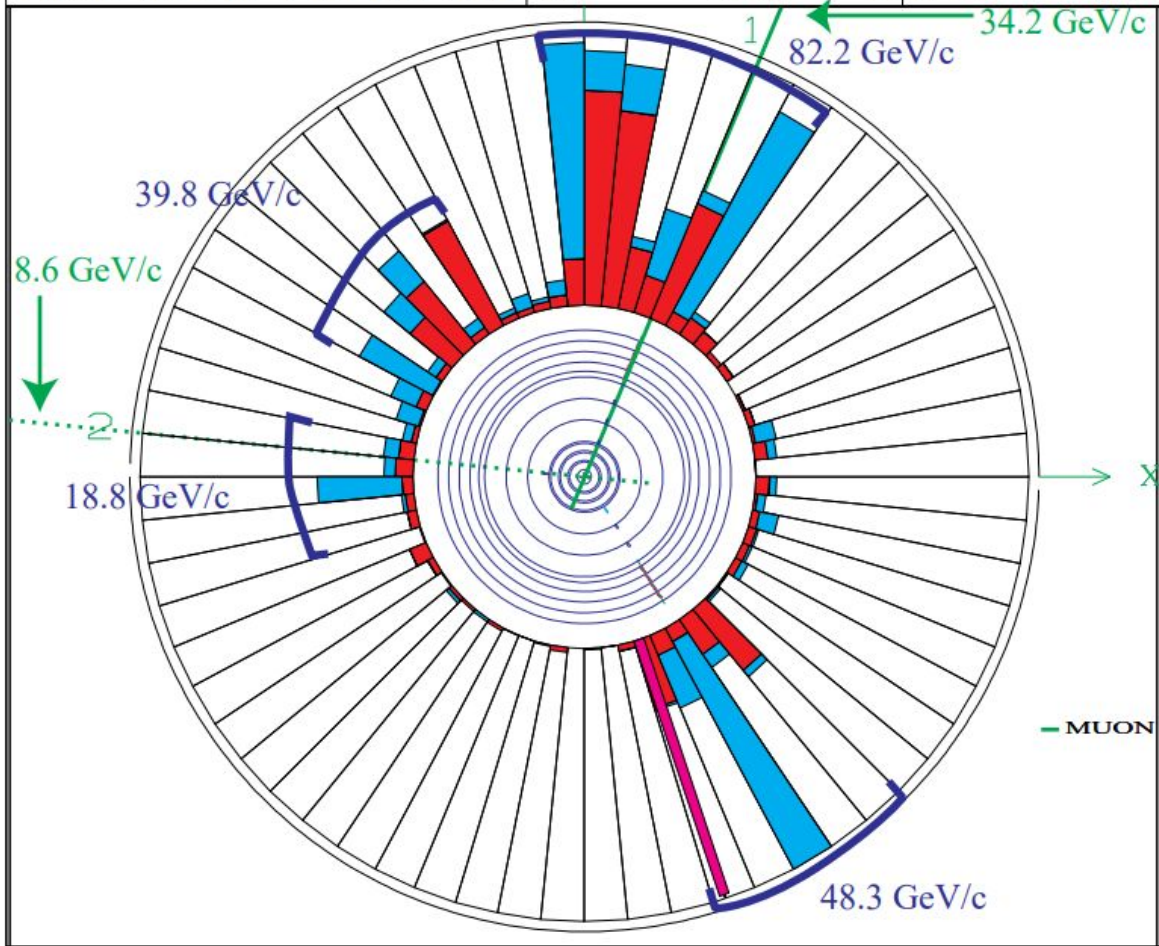
Mass

Particle Physics

$$\text{eV}$$

$$\text{eV}/c$$

$$\text{eV}/c^2$$



D-Zero Detector at Fermi National Accelerator Laboratory

Our task:
*What is the
total
momentum?*

