

Community Solar In NM

Dylan Connelly
Director of Commercial and Community Solar Development
dylan.connelly@affordable-solar.com

Blue Zones

Ikigai

translated as: “that which makes life worth living”
having a purpose in life.

my Ikigai

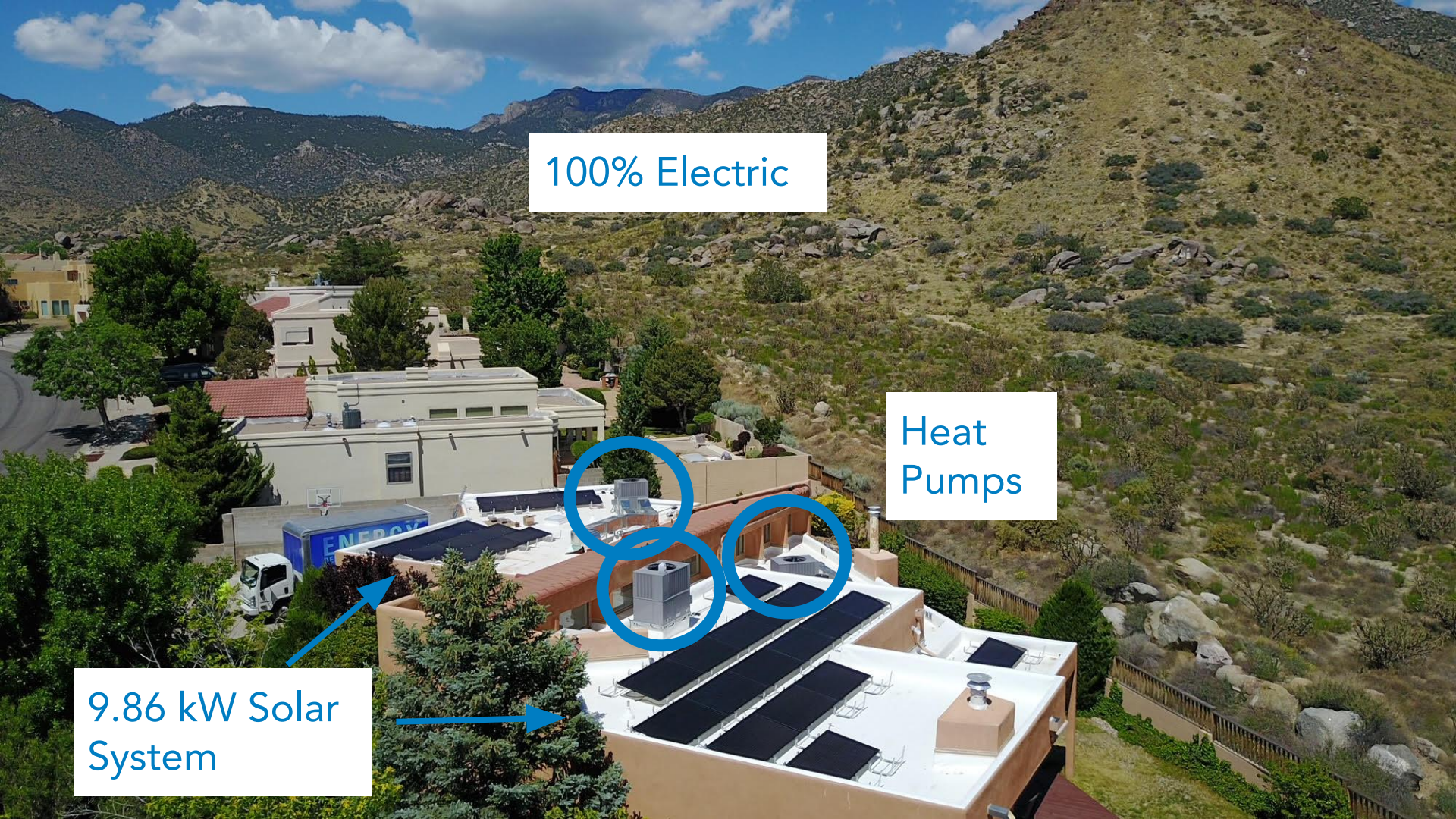
To demonstrate and teach
living in balance with the energies of nature



100% Electric

Heat
Pumps

9.86 kW Solar
System



TRUSTED. RELIABLE. LOCAL.

WHY AFFORDABLE SOLAR?

4,000+

NEW MEXICO
INSTALLATIONS



160+

LOCAL
EMPLOYEES

4.63



4.7

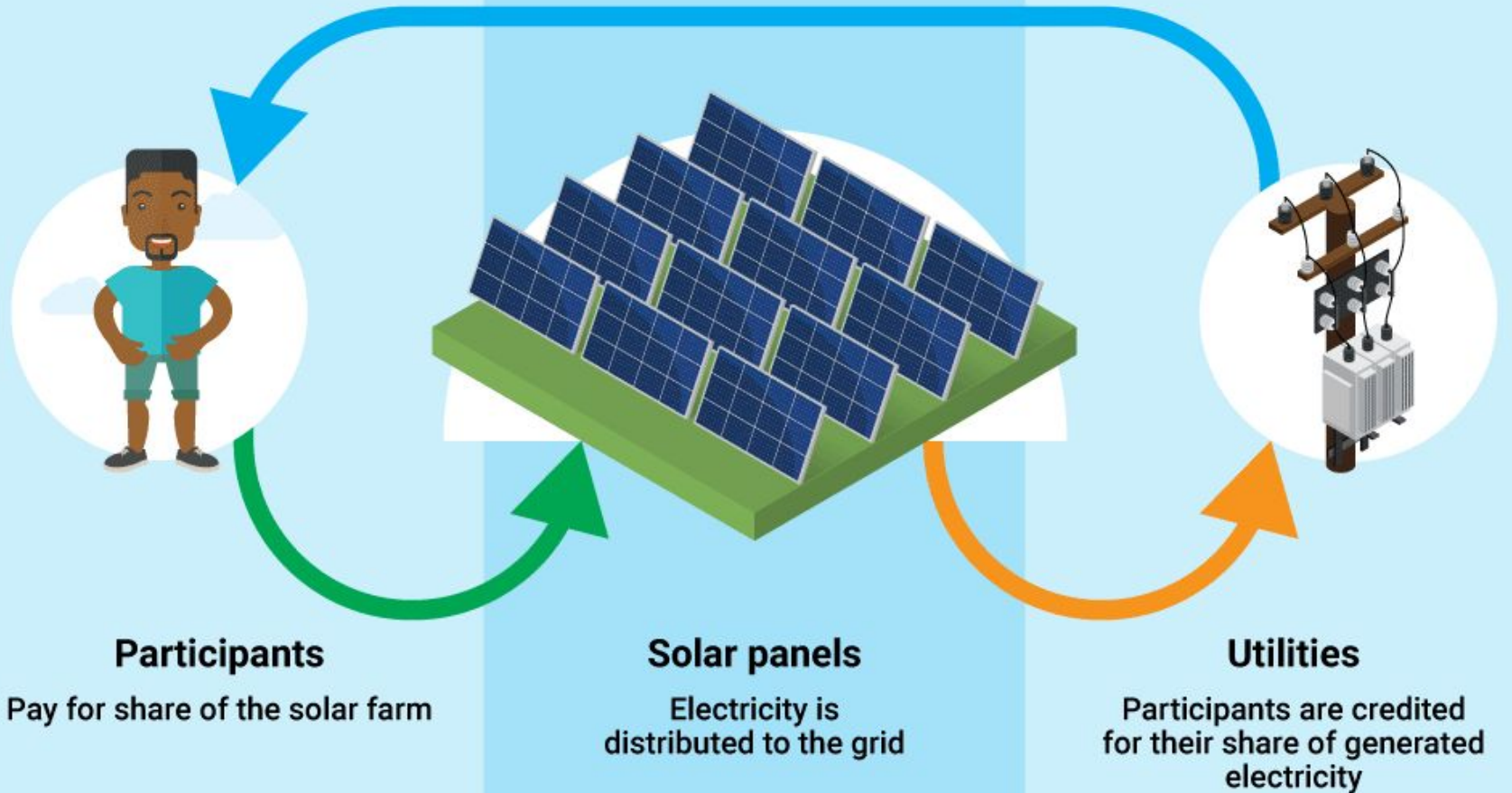


OVER 450 MW'S INSTALLED, WHICH IS APPROXIMATELY
3600 ACRES OR 1.2 MILLION SOLAR PANELS

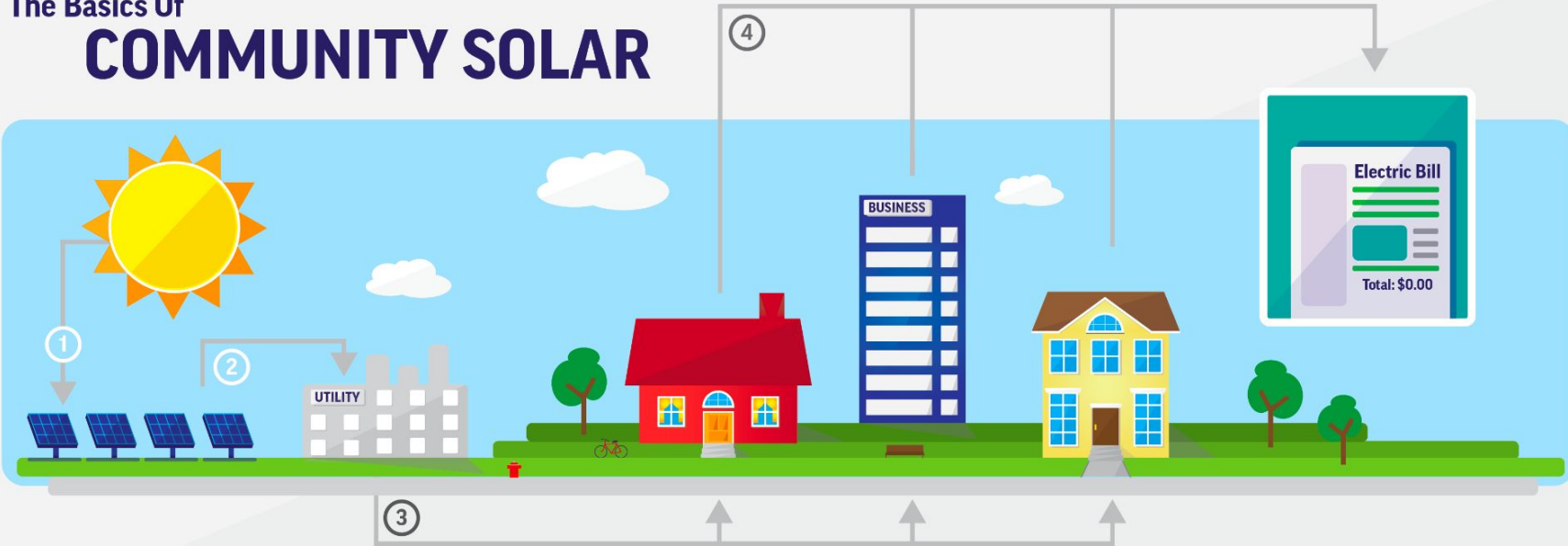
WE'RE RESPONSIBLE FOR MANAGING,
OPERATING, AND MAINTAINING EVERY SINGLE
SOLAR PANEL IN PNM'S FLEET

How does Community Solar Work?

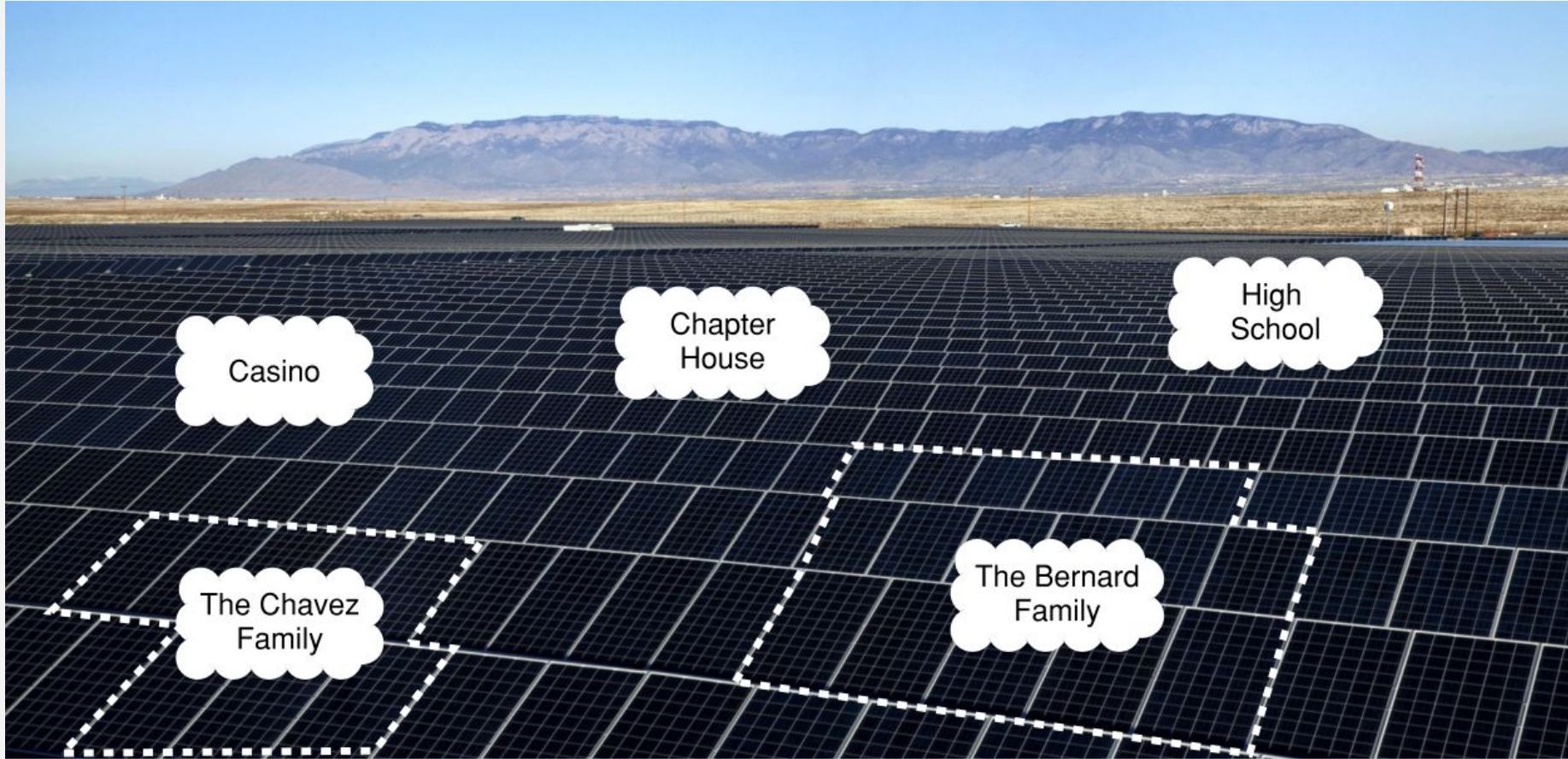
Community solar



The Basics Of **COMMUNITY SOLAR**



Subscribe the Facility



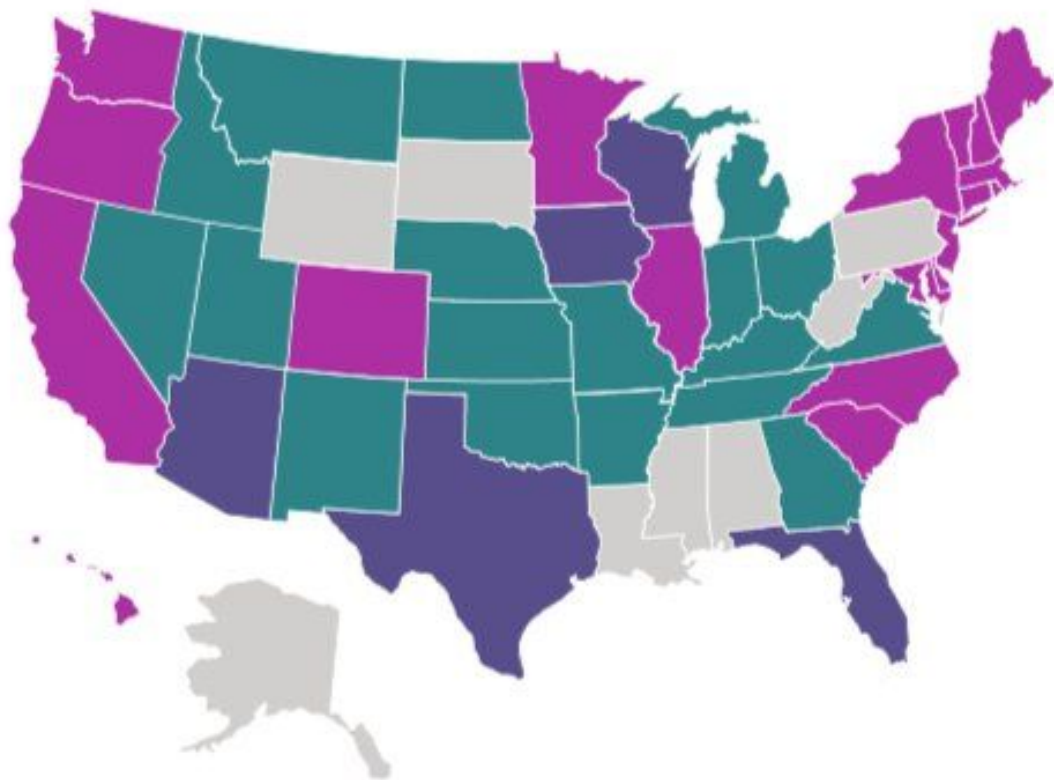
Casino

Chapter
House

High
School

The Chavez
Family

The Bernard
Family



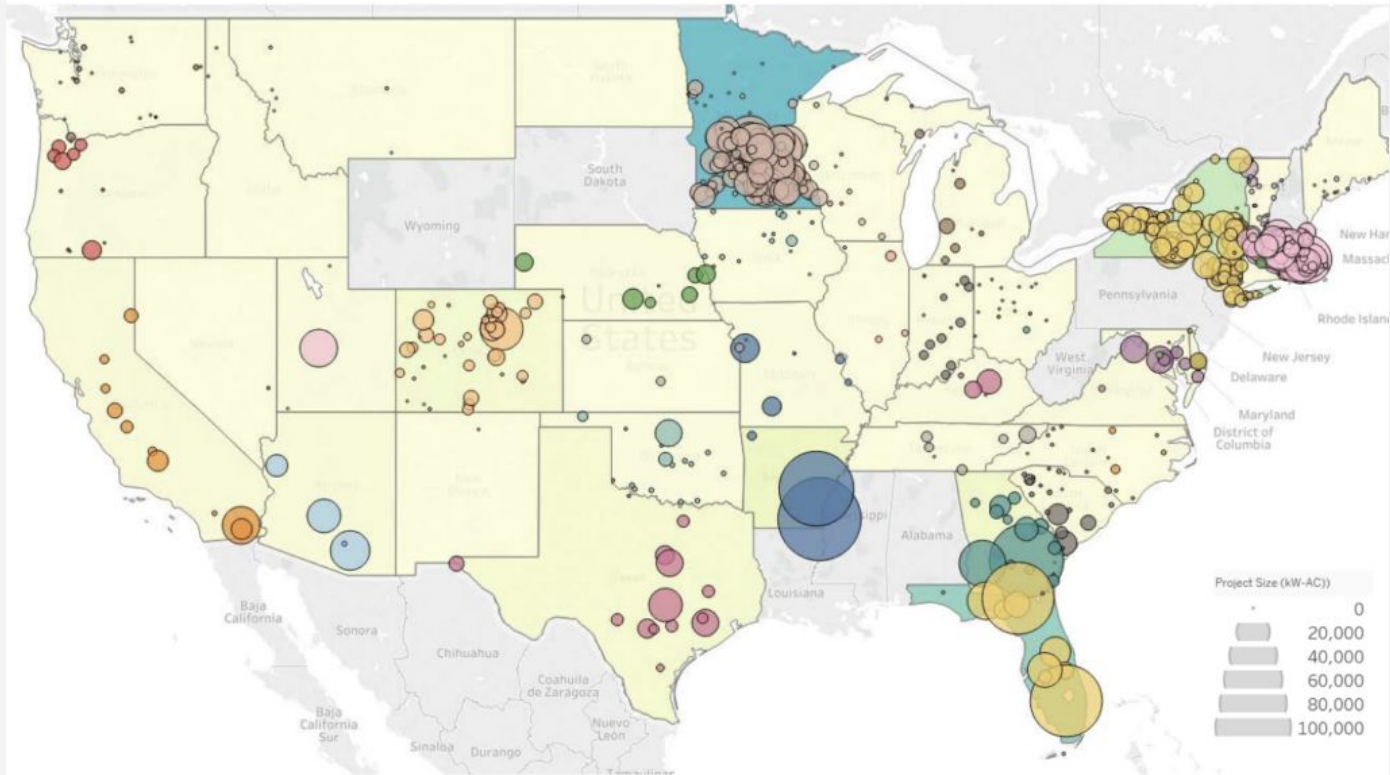
Policy-Enabled
Market

One-Off Programs
(1-5)

One-Off Programs
(5+)

Source: *The Vision for U.S. Community Solar*

Community Solar Capacity by State



Community solar projects in the Contiguous United States

Data Source: [Sharing the Sun Project List 2020](#)

Why Community Solar



Cost	Output	¢/kWh 25 years
\$3.5/watt	1.75 kWh/watt/yr	8¢/kWh
\$1.5/watt	2.3 kWh/watt/yr	2.6¢/kWh

OWNERSHIP



PAY UPFRONT

VS.

SUBSCRIPTION



Cost of Credits	\$100
10% Discount	-\$10
Total Due	\$90

PAY AS YOU GO

NM Community Solar Development Timeline

State Passes
SB84

PRC
Rulemaking

RFP
Process

Interconnection
Applications

Engineering, Procurement,
Construction

Subscribing the Facilities

Mar 2021

Apr 2022

Dec 2022

6-12 months
June 2023

8-12 months
Mar 2024

Approximately 2 Years Until Project Operation - Could be Mar 2024



Community Solar

Interconnection Manual Rewrite

Integrated Resource Plan

Rulemaking

Grid Modernization



Job creation opportunities
such as:

Journeyman Electricians

Laborers

Foreman

Supervisions

QC Inspectors

Project Managers

Equipment Operators

Electrical Helper

Estimators

Safety Specialists

Site Selection



0-1/4 Mile from Three Phase Power Lines

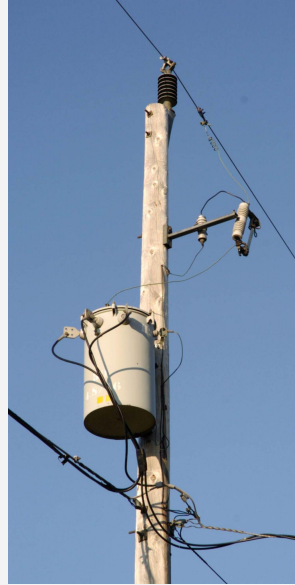


0-5 Miles from Substation

Site Selection



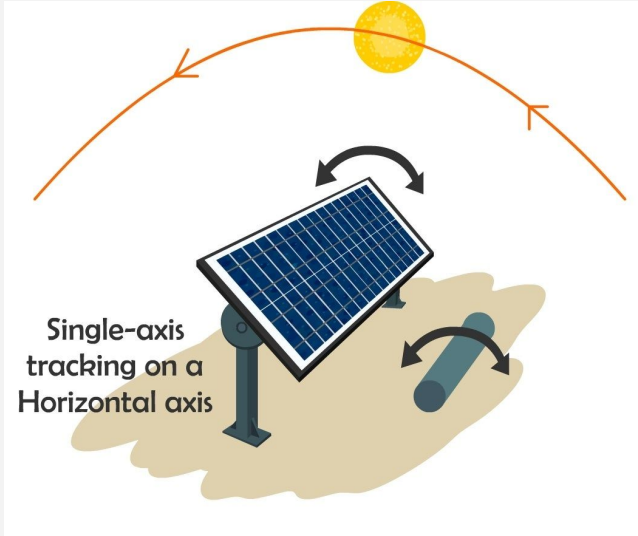
THIS



NOT THIS

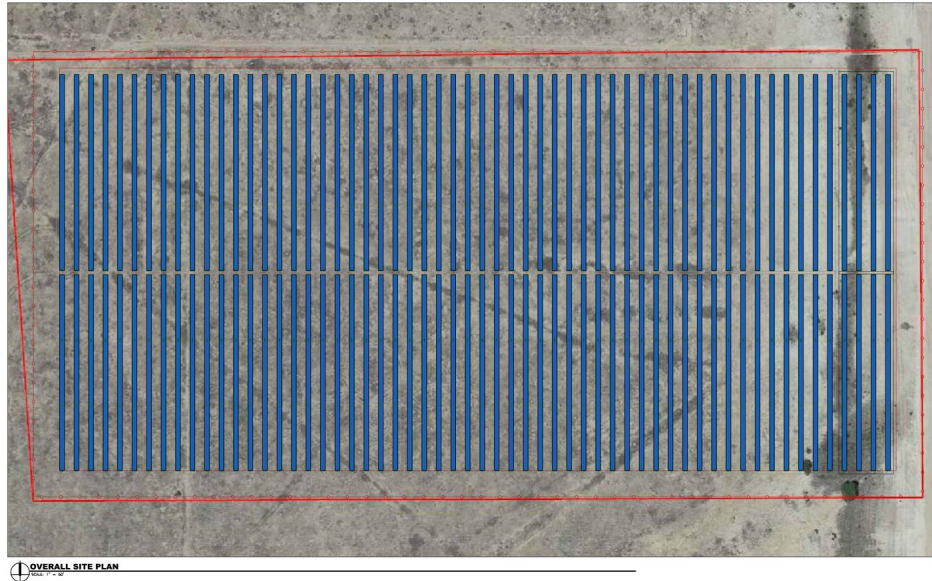
Site Selection

Why Single Axis Trackers



Site Selection

About 800'x2000'



Long East/West or Square

Optimal Sites

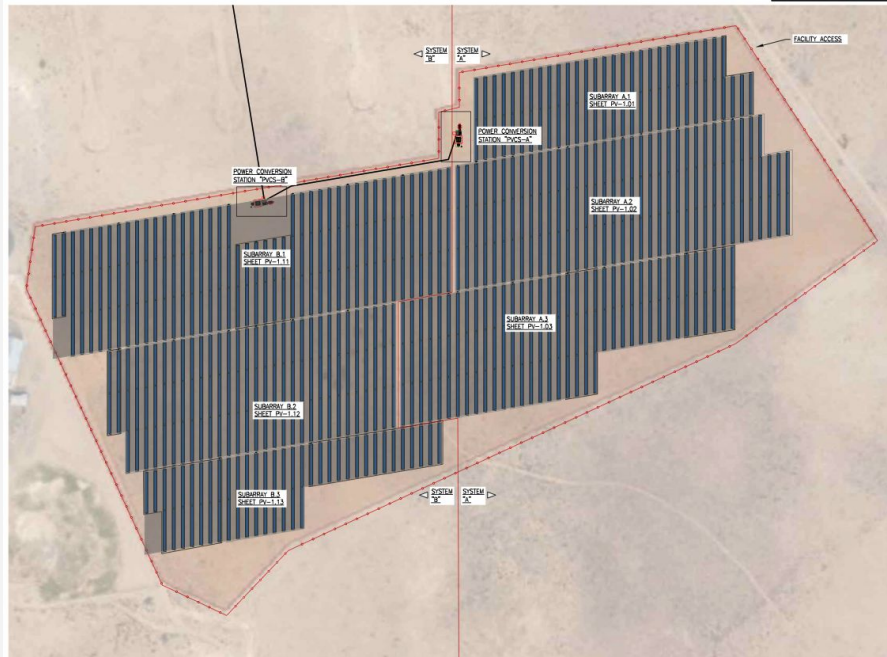
About 1300'x1300'



OVERALL SITE PLAN

Site Selection

Less Optimal Sites



ARRAY SITE PLAN
SCALE: 1" = 100'



OVERALL SITE PLAN
SCALE: 1" = 100'

Thank you.
Any questions?