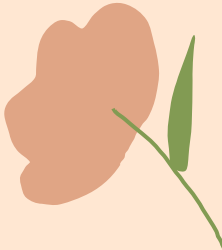




**Week 2**  
**General Meeting**

By Chantille Edano, Khue Le,  
and Christine Chon

# How to Become a Paid Member



01

## Step One

Fill out the [PPS Membership Form](#)

03

## Step Three

Email our IVP, Aly Mills, at [millsac@uci.edu](mailto:millsac@uci.edu) to pickup or ship your member exclusive t-shirt!

02

## Step Two

Pay the membership fee on Venmo [@ppsatuci](#)

04

## Step Four

View your stamp count on our [virtual stamp sheet](#)





# Pharmacy Topic of the Week: Pharmacy Deserts in California

## What are “**pharmacy deserts**?”

- Communities that have limited access to pharmacies

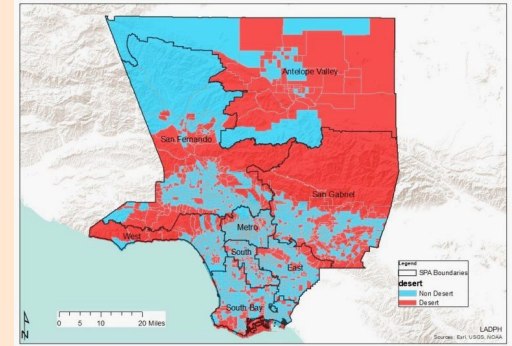
## How are pharmacy deserts formed and determined?

- Unlike previous studies done in LA county, this study focuses on pharmacy deserts in terms of social determinants of health

## What are the results of this study?

- Areas lacking pharmacy access are characterized by denser populations, larger numbers of Latine and Black residents, less vehicle and home ownership, higher crime rates, and greater poverty.

\* Find out more [here!](#) \*

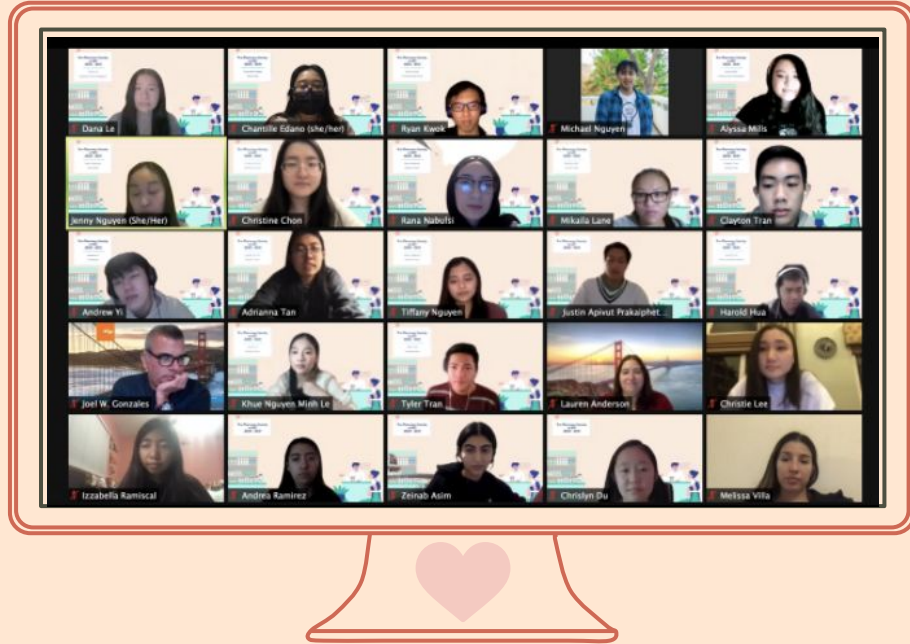


This map depicts pharmacy desert regions within the LA county in red.



## Recap: Week 1 UCSF

Thank you to everyone who was able to join our meeting with Mr. Gonzales and Ms. Anderson from UCSF! We hope you learned more about their PharmD program and what UCSF has to offer!



# Upcoming Event:

## Chapman University Virtual Visit

### When?

- Saturday, January 23rd
- 10 AM - 12 PM

### Where?

- Zoom

### What?

- We will be taking a virtual visit to Chapman University's School of Pharmacy to learn more about their PharmD program and have the opportunity to interact with their current students while seeing what their school has to offer!

### Interested?

- Fill out this [Google Form](#) by **Wednesday, January 20th at 11:59 PM!**

### Questions, comments, or concerns?

- Please contact our Internal Vice President, Aly Mills, at [millsac@uci.edu](mailto:millsac@uci.edu).





# Upcoming Event: Week 3 General Meeting - LoR

## When?

- Wednesday, January 20th
- 6 - 7 PM

## Where?

- **Zoom** (Meeting ID: 989 5274 8605)

## Why?

- Learn great tips on how to prepare your letters of recommendation with our President, Jenny Nguyen!

## Interested?

- Paid members will receive a stamp for attending!

## Questions, comments, or concerns?

- Please contact our External Vice President, Dana Le, at **[danakl@uci.edu](mailto:danakl@uci.edu)**



# Volunteering Opportunity: Step-Up Tutoring



## What?

- Step-Up Tutoring provides free online tutoring, mentorship and emotional support for students amidst the COVID-19 pandemic

## Where?

- Visit the link [here!](#)

## Why?

- Help foster educational growth in elementary school students from Los Angeles Unified School District!
- Minimum commitment: 2 hrs/wk for 10 weeks
- No experience required!

## Interested?

- Paid members will receive a stamp for attending!
- Complete this [form](#) by **Wednesday, January 20th by 11:59 PM!**

## Questions, comments, or concerns?

- Please contact our President, Jenny Nguyen, at [jennn15@uci.edu](mailto:jennn15@uci.edu).



# Volunteering Opportunity: Free Rice

## What?

- Freerice is a website that donates to the World Food Programme where you can earn “rice” in the form of trivia questions that translates to currency through ad revenue. Their goal is to “end hunger, achieve food security, and improve nutrition”

## Why?

- Make a difference and raise money for WFP in order for them to continue to provide for those in dire need
- Donations are dispersed where needs are greatest: food, education, and emergency services

## When?

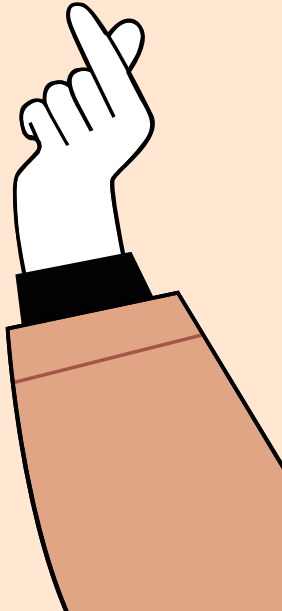
- Anytime you choose!

## Interested?

- Paid members can receive a stamp by filling out the [Google Form](#) by **January 20th at 11:59 PM!**
- Join code for our team is **KF27B2HA**

## Questions, comments, or concerns?

- Please contact our President, Jenny Nguyen, at [jennn15@uci.edu](mailto:jennn15@uci.edu).





# Spotify Collaborative Playlist

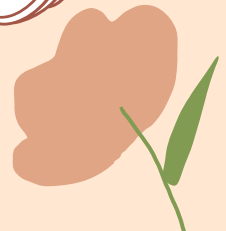


PPS at UCI now has our own **Spotify Playlist!** Anyone with a Spotify account can listen and add to it. Please feel free to share your wonderful music taste with each other!

Please note that any songs deemed inappropriate may be removed.

## Questions, comments or concerns?

Please contact our Fundraising Chair, Ryan Kwok, at [kwokth@uci.edu](mailto:kwokth@uci.edu).



# Stay Connected with Us :D



**Facebook**

[Pre-Pharmacy  
Society at UCI](#)



**Website**

[https://sites.uci.edu  
/pharmacy](https://sites.uci.edu/pharmacy)



**Instagram**

[@pps\\_at\\_uci](#)



**Zoom**

[Study Room](#)



**Discord**

[Pre-Pharmacy  
Society at UCI](#)



**Spotify**

[Collaborative  
Playlist](#)

# Please Welcome our Social Chairs...

Mikaila Lane



Clayton Tran

