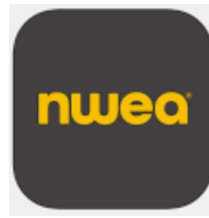




International School
Ho Chi Minh City



Northwest Assessment Association

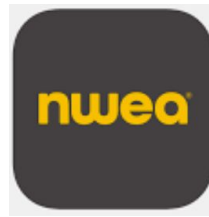


Understanding Your Child's MAP Scores 2024-25





International School Ho Chi Minh City



Northwest Assessment Association



Vietnamese



Korean



Japanese



- Reminders about MAP
- Strands of MAP testing
- Points to be aware of
- Language use for MAP
- How to read the MAP results
- Discussing the results with your child
- Ongoing help
- Questions



Primary results are not uploaded yet on PowerSchool.

Parents have been emailed the Student Progress Report with a link to the document.

Primary is trialing the new Family Report and that will be given on October 3 at our Conferences.

Secondary results are on SEQTA Engage under reports.

NWEA will phase out the Student Progress report in July 2025.





Reminders about MAP



NWEA's assessments are called **Measures of Academic Progress (MAP[®])**.

They are a series of three tests that measure your child's general knowledge in reading, language usage, and mathematics.



Reminders about MAP



A MAP test is an adaptive multiple choice test, meaning the questions are different for each student as it adapts the difficulty of each question based on how well a student answers all the previous questions.

The test starts off with questions of average difficulty for that grade level. As the student gets questions right, the difficulty of the questions increase. As they get questions wrong, the difficulty decreases.



Reminders about MAP



The MAP tests are just one data point that we use to determine what students can do and know, so goals can be set to measure progress and growth for each individual student.

Teachers can pinpoint weaker areas to provide support and stronger areas where students need to be challenged. It can be used to compare a group of students in the same classroom or to predict individual achievements. **Students cannot pass or fail these tests.**



Reminders about MAP



These tests will not affect grades or promotion to the next year level. Instead, they are designed to target a student's academic performance in mathematics, reading and language use. The tests are **tailored to** an individual's current achievement level.



What is MAP?



Math Strands Grade 3-5

- Operations and Algebraic Thinking
- Number & Operations
- Geometry
- Measurement & Data

Math Strands Grade 6-10

- Operations and Algebraic Thinking
- The Real and Complex Number Systems
- Geometry
- Statistics and Probability



What is MAP?



Language Usage- Grade 3-Grade 8

- Writing: Write, Revise Texts for Purpose and Audience
- Language: Understand, Edit for Mechanics
- Language: Understand, Edit for Grammar, Usage

What is MAP?



Reading Strands- Grade 3-5

- Literature
- Informational Text
- Vocabulary: Acquisition and Use
- Lexile Range

Reading Strands Grade 6-10

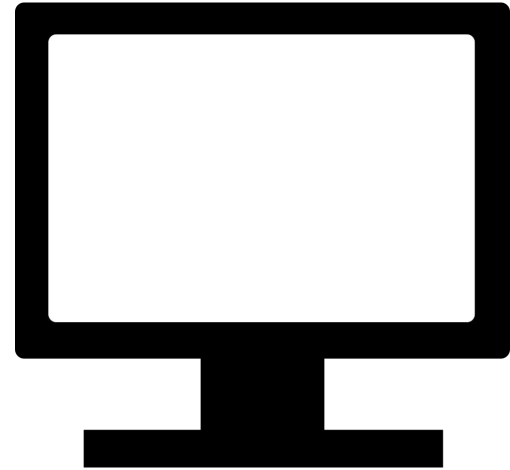
- Literary Text: Key Ideas and Details
- Literary text: Language, Craft, Structure
- Informational text: Key Ideas and Details
- Vocabulary: Acquisition and Use



There is normally a dip in the RIT scores between the Spring to Fall MAP tests (over 6 weeks of holidays).

The question data bank has over 60,000 questions - no two students will have exactly the same test experience.

The test questions are based on American Education Reaches Out (AERO) standards. These standards are mapped to PYP and MYP unit of inquiry.



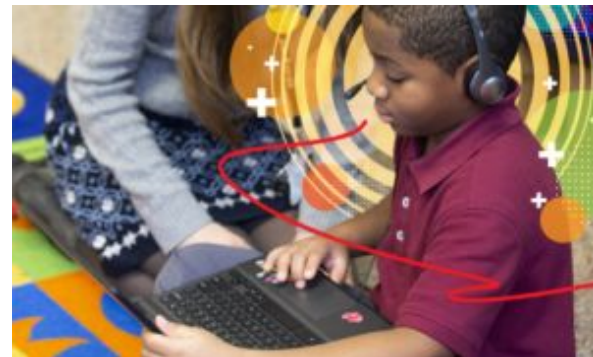


Points to be aware of

The district score is only ISHCMC students in the same grade.

The test is made to challenge students to find out what skills and knowledge they already have and what they can do.

NWEA expects students to know around 50% of the content on the MAP test. This is why students may have found it challenging or might have had to guess the answer. This is why it is one data point that we use in order to have a holistic picture of students as learners.





Points to be aware of

The norm level is from the USA - The norm levels take into account:

- Students who are in the same grade
- They have all been taught for the same amount of time
- They have the same RIT score

Norm data takes test results from 9 testing windows and records are sampled from between 3.6 and 5.5 million test scores from 500,000 to 700,000 students attending over 24,500 public schools in 5,800 districts spread across the States.

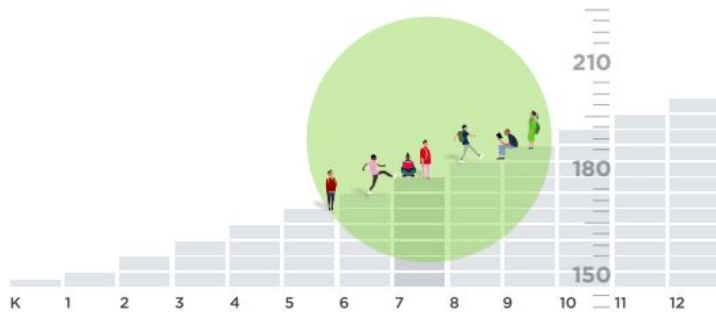




Language used for MAP

What it measures

MAP Growth uses a RIT scale to accurately measure what students know, regardless of their grade level. It also measures growth over time, allowing you to track your child's progress throughout the school year and across multiple years. Once your child completes a MAP Growth test, they receive a RIT score.



The RIT scale precisely measures student performance, regardless of whether they're performing on, above, or below grade level.

map GROWTH

What is RIT?

Rasch UNIT - measurement scale used to simplify the test scores

The RIT scale ranges from 100 - 350.

What is a RIT Score?

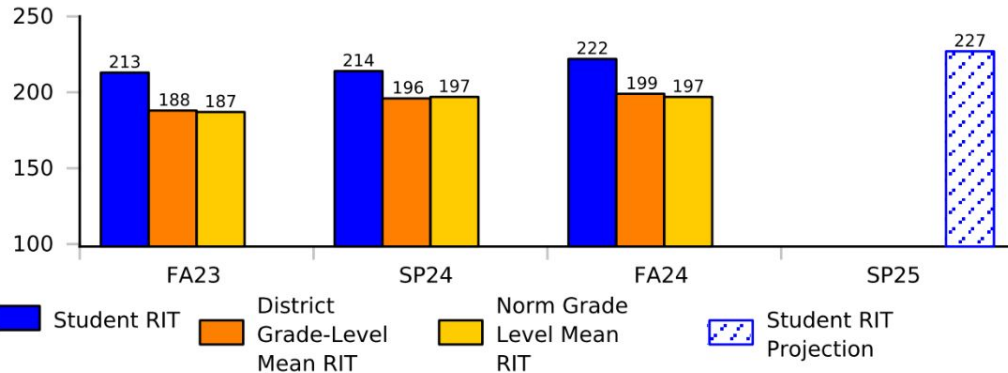
This score represents a student's achievement level at any given moment and helps measure their academic growth over time.



Charting Progress

Primary Student

Language Arts: Reading



Term/Year	Grade	RIT Score (+/- Std Err)	RIT Growth	Growth Projection	Percentile Range
FA24	4	219- 222 -225			90- 93 -96
SP24	3	211- 214 -217	1	7	81- 86 -90
FA23	3	210- 213 -216			92- 94 -96

Reading Goals Performance - Fall 2024-2025

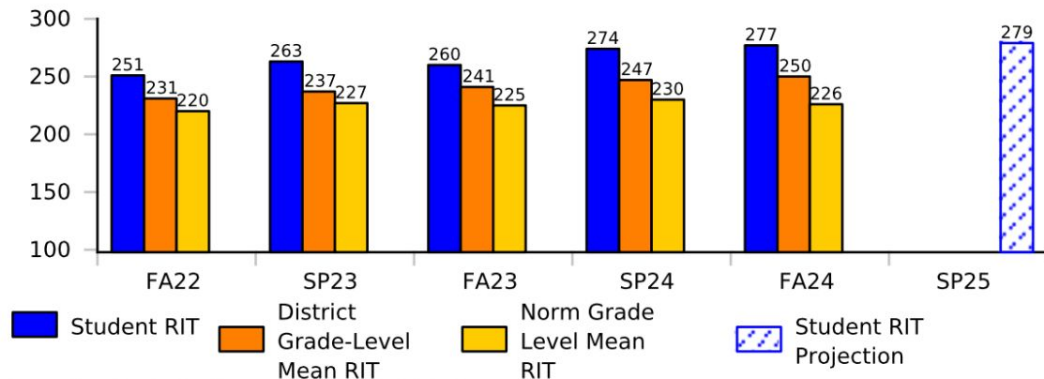
Literary Text	High	Informational Text	High
Vocabulary	High		
Lexile® Range	1015L-1165L		



Secondary Student

School: INTERNATIONAL SCHOOL HO CHI M
Term Rostered: Fall 2024-2025

Math: Math K-12



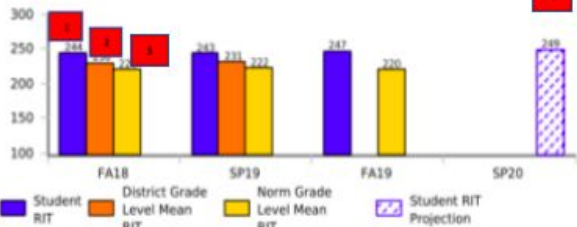
Term/Year	Grade	RIT Score (+/- Std Err)	RIT Growth	Growth Projection	Percentile Range
FA24	9	274-277-280			99-99-99
SP24	8	271-274-277	14	4	98-99-99
FA23	8	257-260-263			95-97-98
SP23	7	260-263-266	12	7	96-97-98
FA22	7	248-251-254			94-96-97
SP22	6	247-250-253	1	8	92-94-96
FA21	6	246-249-252			97-98-99
FA20	5	243-246-249			99-99-99

Mathematics Goals Performance - Fall 2024-2025

Operations and Algebraic Thinking	267-279	The Real and Complex Number Systems	273-285
Geometry	271-285	Statistics and Probability	272-288

Understanding your student's MAP Report:

Reading



Term/Year	Grade	RIT (+/- Std Err)	RIT Growth	Projection	Percentile Range
FA19	10	243-247-251			91-94-96
SP19	9	240-243-247	-1	2	86-90-94
FA18	9	241-244-247			90-94-96



- The student's RIT score. The term and the year the student took the test. ■
- The average RIT score for all students at ISHCMC is in the same grade level. The middle bold number is the student's RIT score. ■
- The average RIT score for all students in the same grade in the USA. The student's growth in RIT points from the first test to the last test. ■
- The predicted RIT score for when they take the test at the end of the school year. The predicted amount of points the student will grow from the first test to the last test of the current school year. ■
- The subject area is broken down into smaller components. The possible levels are Low, Lo Avg, Avg, Hi Avg and High. The middle bold number is the student's percentile ranking. ■
- A person's reading ability is based on the Lexile scale. This helps identify books that will be challenging for students. See the Lexile to Grade Level Chart below:



Results

Lexile to Grade Level Chart

Grade	End-of-Year Student Measures, 50th to 90th Percentile
1	165L to 565L
2	425L to 790L
3	645L to 980L
4	850L to 1155L
5	950L to 1255L
6	1030L to 1335L
7	1095L to 1405L
8	1155L to 1465L
9	1205L to 1515L
10	1250L to 1605L
11 & 12	1295L to 1605L



Helps us to identify what the students already know and what they are ready to learn.

Areas of growth and areas for development.

Identifies curriculum gaps and helps inform teaching and learning through data driven instructions.

Helps us to identify if your child needs additional support in particular areas (interventions for low and extension for high).

Each of the strands is weighted equally - no strand is more important than the other.





Discussing the results with your child

MAP growth scores are just one data point

- Students traditionally have a dip in the fall

Help your child to look at the 'whole' picture not just MAP results

Think about your child as an individual learner - try not to compare the results between your children and others





Ongoing Help

The second MAP Tests are in May

For additional information: <https://www.nwea.org/the-map-suite/family-toolkit/>

Using **Lexile® Find a Book**, you can easily find books that match your child's Lexile measure, grade level or interests among the hundreds of thousands of books in this browser tool. Search filters include dozens of interest categories, books in a series and award-winning books

Extra Mathematics Practice?

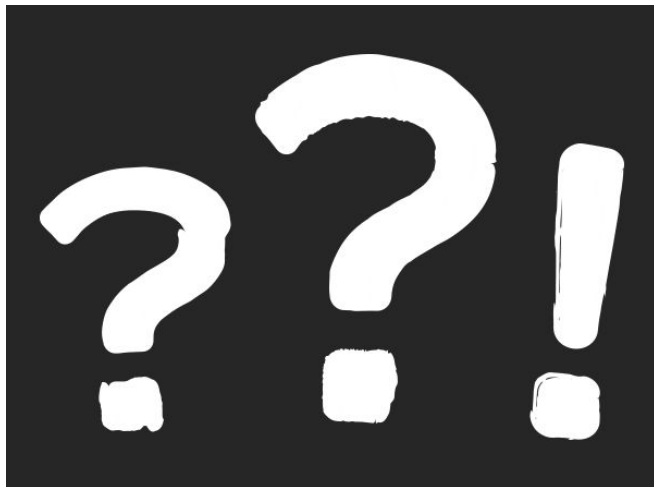
This Khan Academy website offers practice questions at different levels of Mathematics depending on your son/daughter's current MAP scores. As parents, you are welcome to use this at home as extra support before the next round of MAP tests.

Please select Mathematics 2-5 or 6+. <https://www.khanacademy.org/math/mappers>



International School
Ho Chi Minh City

Questions?





International School Ho Chi Minh City



Northwest Assessment
Association

Thank you for attending today and your continued partnership with the school. We appreciate your time and support!

